

Barrier Blocks

Accessories

Jumpers, Quick Clamps / Y Terminal Barrier Accessories

Terminal Block Quick Reference

Barrier Block Series	Center-to-Center Spacing	Number of Terminals	Number of Row(s)	Screw Size	Operating Voltage	Current Rating	Maximum Wire Size	Maximum Watts/Terminal	Voltage Rating w/ Marker	V Voltage Rating w/o Marker	Marker Strip Mounting
140	0.375	1-25	Double	5-40	250 Volts	15 Amps	#16	3750	2000	1100	Bottom
141	0.438	1-20	Double	6-32	250 Volts	20 Amps	#14	5000	2400	1100	Bottom
142	0.563	1-17	Double	8-32	250 Volts	30 Amps	#10	7500	2600	1600	Bottom



Quick Clamp Terminals

Simplifies engaging of wires to barrier blocks. Wire is inserted into flared opening and screw is tightened. Screws are brass binder head type with nickel plating. Terminals are brass with tin plating. Includes two mating clamps and one screw



Ordering Information

Barrier Block Series	Catalog Number	Screw Size	Wire Gauge Range AWG
141	QC-1	6-32x5/16"	12 thru 22
142	QC-2	8-32x8/8"	10 thru 16

Barrier Blocks - Accessories

Jumpers

For connecting between adjacent terminals or alternate terminals. All jumpers are brass with nickel plating.

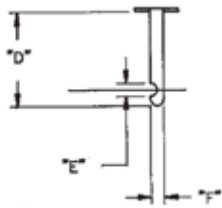
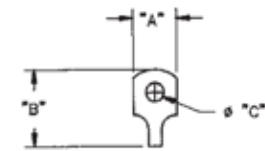
Ordering Information

Barrier Block Series	Type	Catalog Number
140	A	140J-1
141	B	141J-1
141	F	141J
142	F	95B
142	D	142J-1*
142	E	142J-2

* Connects two alternate terminals

Solder Terminals

Optional Terminals for use with Cinch terminal blocks



Y Terminals

Ordering Information

Catalog Number	A		B		C		D		E		F	
	in	mm	in	mm	in	mm	in	mm	in	mm	in	mm
Y-140	.281	7.14	.500	12.70	.136	3.45	.593	15.06	.093	2.36	.091	2.31
Y-141	.312	7.92	.625	15.88	.152	3.86	.781	19.83	.125	3.18	.103	2.62
Y-142	.412	10.69	.734	18.64	.177	4.50	.906	23.01	.125	3.18	.126	3.20

*Marketed exclusively through distribution.

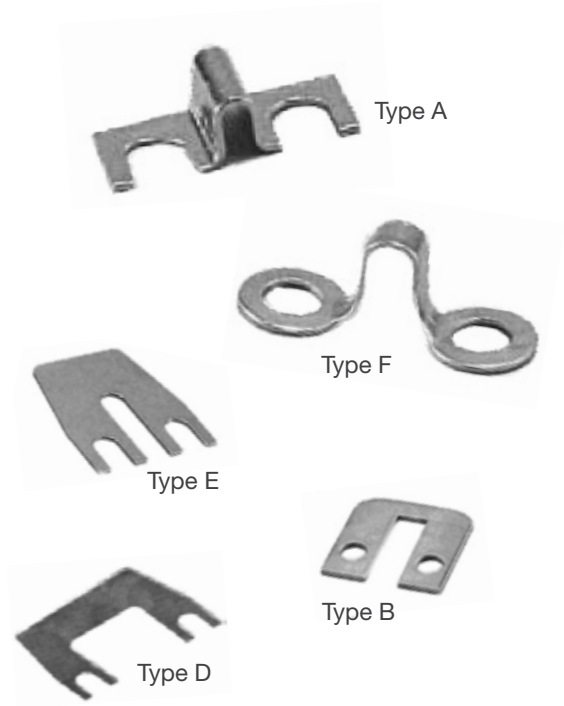


Asia Pacific
+86 21 5442 7668
ccs.asia.sales@as.cinch.com

Europe, Middle East & Africa
+44 (0) 1245 342060
CinchConnectivity@eu.cinch.com

North America
+1 630 705 6000
inquiry@us.cinch.com

belfuse.com/cinch



Mouser Electronics

Authorized Distributor

Click to View Pricing, Inventory, Delivery & Lifecycle Information:

Cinch Connectivity Solutions:

[Y-142](#) [Y-140](#) [MS18140](#) [140J1](#) [95B](#) [141J](#) [MS2140](#) [MS5141](#) [Y-141](#) [W-140](#)