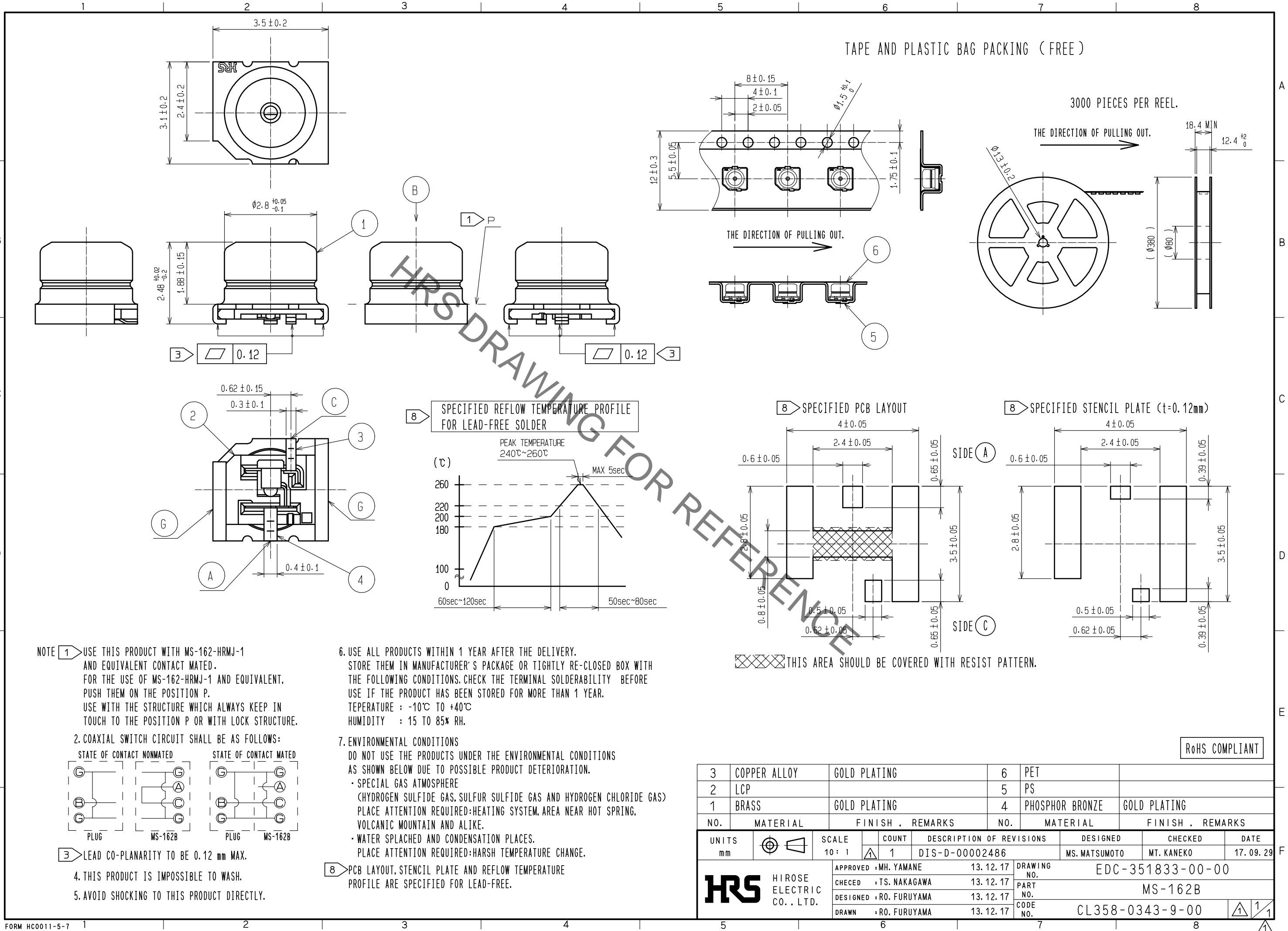


Jun.1.2021 Copyright 2021 HIROSE ELECTRIC CO., LTD. All Rights Reserved. In case of consideration for using Automotive equipment / device which demand high reliability, kindly contact our sales window correspondents.

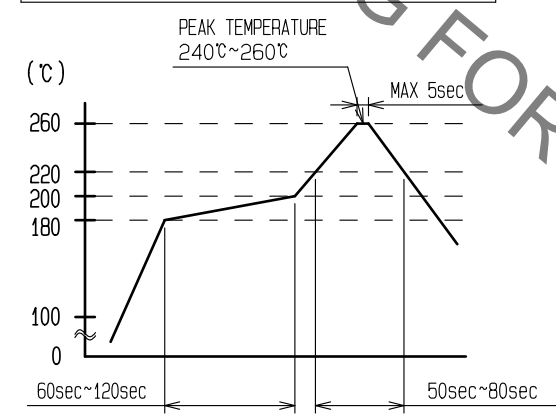


TAPE AND PLASTIC BAG PACKING (FREE)

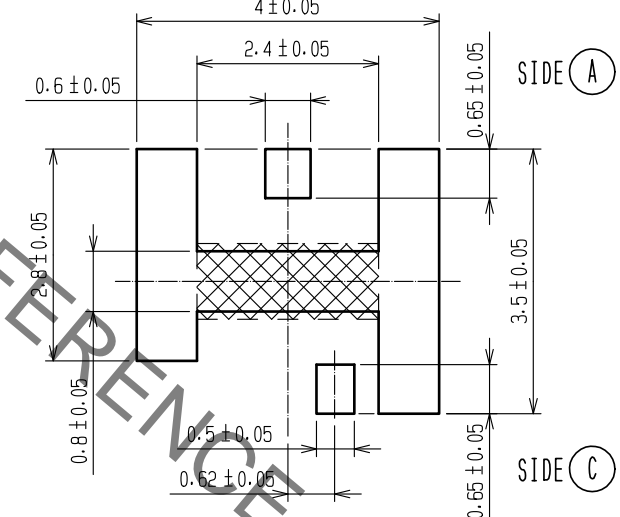
3000 PIECES PER REEL.

THE DIRECTION OF PULLING OUT.

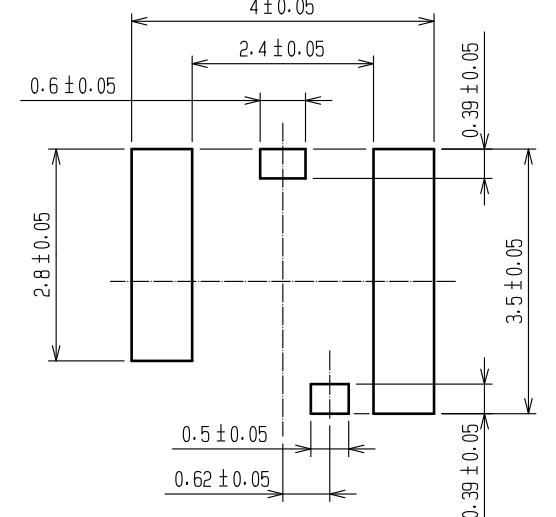
8 SPECIFIED REFLOW TEMPERATURE PROFILE FOR LEAD-FREE SOLDER



8 SPECIFIED PCB LAYOUT

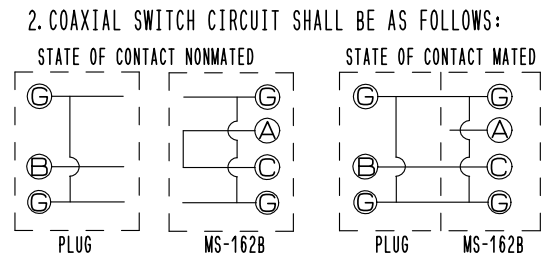


8 SPECIFIED STENCIL PLATE (t=0.12mm)



THIS AREA SHOULD BE COVERED WITH RESIST PATTERN.

NOTE 1 USE THIS PRODUCT WITH MS-162-HRMJ-1 AND EQUIVALENT CONTACT MATED. FOR THE USE OF MS-162-HRMJ-1 AND EQUIVALENT, PUSH THEM ON THE POSITION P. USE WITH THE STRUCTURE WHICH ALWAYS KEEP IN TOUCH TO THE POSITION P OR WITH LOCK STRUCTURE.



3 LEAD CO-PLANARITY TO BE 0.12 mm MAX.  
4. THIS PRODUCT IS IMPOSSIBLE TO WASH.  
5. AVOID SHOCKING TO THIS PRODUCT DIRECTLY.

6. USE ALL PRODUCTS WITHIN 1 YEAR AFTER THE DELIVERY. STORE THEM IN MANUFACTURER'S PACKAGE OR TIGHTLY RE-CLOSED BOX WITH THE FOLLOWING CONDITIONS. CHECK THE TERMINAL SOLDERABILITY BEFORE USE IF THE PRODUCT HAS BEEN STORED FOR MORE THAN 1 YEAR.  
TEMPERATURE : -10°C TO +40°C  
HUMIDITY : 15 TO 85% RH.

7. ENVIRONMENTAL CONDITIONS DO NOT USE THE PRODUCTS UNDER THE ENVIRONMENTAL CONDITIONS AS SHOWN BELOW DUE TO POSSIBLE PRODUCT DETERIORATION.  
- SPECIAL GAS ATMOSPHERE (HYDROGEN SULFIDE GAS, SULFUR SULFIDE GAS AND HYDROGEN CHLORIDE GAS) PLACE ATTENTION REQUIRED: HEATING SYSTEM, AREA NEAR HOT SPRING, VOLCANIC MOUNTAIN AND ALIKE.  
- WATER SPLASHED AND CONDENSATION PLACES. PLACE ATTENTION REQUIRED: HARSH TEMPERATURE CHANGE.

8 PCB LAYOUT, STENCIL PLATE AND REFLOW TEMPERATURE PROFILE ARE SPECIFIED FOR LEAD-FREE.

RoHS COMPLIANT

3	COPPER ALLOY	GOLD PLATING	6	PET	
2	LCP		5	PS	
1	BRASS	GOLD PLATING	4	PHOSPHOR BRONZE	GOLD PLATING
NO.	MATERIAL	FINISH . REMARKS	NO.	MATERIAL	FINISH . REMARKS
UNITS mm		SCALE 10:1	COUNT 1	DESCRIPTION OF REVISIONS DIS-D-00002486	DESIGNED MS. MATSUMOTO
			APPROVED : MH. YAMANE	13. 12. 17	DESIGNED MS. MATSUMOTO
			CHECED : TS. NAKAGAWA	13. 12. 17	CHECKED MT. KANEKO
			DESIGNED : RO. FURUYAMA	13. 12. 17	DATE 17. 09. 29
			DRAWN : RO. FURUYAMA	13. 12. 17	
			DRAWING NO. EDC-351833-00-00		
			PART NO. MS-162B		
			CODE NO. CL358-0343-9-00		
			1/1		

# Mouser Electronics

Authorized Distributor

Click to View Pricing, Inventory, Delivery & Lifecycle Information:

[Hirose Electric:](#)

[MS-162B](#)