

# Rittal – The System.

Faster – better – everywhere.

## ► Shallow air duct system for roof-mounted cooling units and roof-mounted air/water heat exchangers – SK 3286.850

Date : Apr 26, 2021

ENCLOSURES

POWER DISTRIBUTION

CLIMATE CONTROL

IT INFRASTRUCTURE

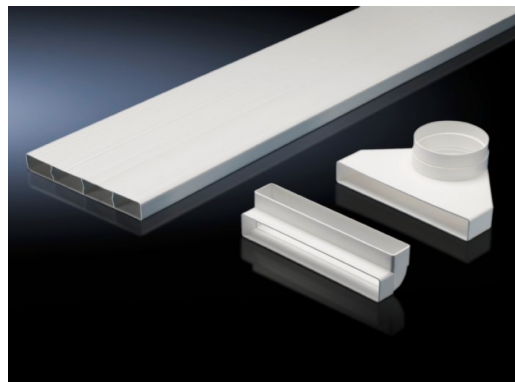
SOFTWARE & SERVICES

FRIEDHELM LOH GROUP



# Shallow air duct system for roof-mounted cooling units and roof-mounted air/water heat exchangers – SK 3286.850

created: 26.04.2021 build on [www.rittal.com/uk-en](http://www.rittal.com/uk-en)



## Product description

<b>Description:</b>	Cold air may be routed directly to specific areas of the enclosure using the air duct system. The risk of air short circuits due to self-ventilated installed devices is therefore eliminated. The dimensions of the shallow duct are W x H x D 229 x 1500 x 29 mm, and can be shortened to the required length.
<b>Applications:</b>	Suitable for enclosures with widths of 800 mm or more and depths of 600 mm or more.
<b>Material:</b>	Flame-resistant plastic to DIN 4102/B1
<b>Colour:</b>	RAL 7035
<b>Assembly instruction:</b>	For devices 3359.XXX and 3382.XXX, the air duct adaptor 3286.840 is required for mounting.
<b>Supply includes:</b>	Shallow duct Adaptor Compensating piece Deflector, 90°
<b>Note:</b>	Do not direct cold air straight at active components. When using the ducting system, the performance of the cooling unit may be reduced, depending on the application in question. Not suitable for use in conjunction with quick-change frame.
<b>To fit Model No.:</b>	3209.... 3210.... 3273.... 3383.... 3384....

3385....  
3359....  
3382....

## Product description

**eCl@ss 8.0/8.1:** 22410601

**Packs of:** 1 pc(s).

**Weight/pack:** 3.5 kg

**EAN:** 4028177557055

**Customs tariff number:** 39269097

**ETIM 7.0:** EC011217

**ETIM 6.0:** EC001292

**eCl@ss 8.0/8.1:** 22410601

**eCl@ss 6.0/6.1:** 27189269

**Product description:** SK Air duct system Flat, for SK 3209/3210/3273/3383/3384/3385/3359/3382, WHD: 229 x 1500 x 29 mm

## Approvals

**Certificates:** EAC