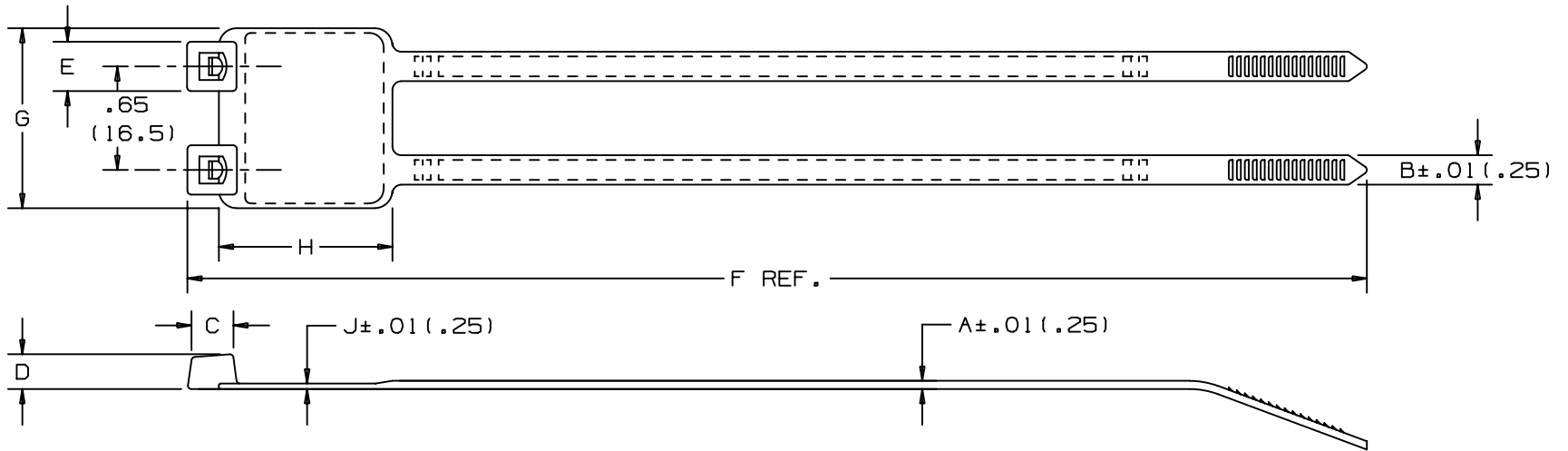


THIS COPY IS PROVIDED ON A RESTRICTED BASIS AND IS NOT TO BE USED IN ANY WAY DETRIMENTAL TO THE INTERESTS OF PANDUIT CORP.



PANDUIT PART NO.*	BUNDLE DIA.		A in (mm)	B in (mm)	C in (mm)	D in (mm)	E in (mm)	F in (mm)	G in (mm)	H in (mm)	J in (mm)	WRITE-ON AREA in (mm)	MIN LOOP TENSILE lbs (N)	CROSS-SECTION	WEIGHT lbs/100pcs. (g)
	MIN. in (mm)	MAX. in (mm)													
PL2M2S	.37 (9.5)	1.75 (45)	.052 (1.3)	.185 (4.7)	.258 (6.6)	.220 (5.6)	.320 (8.1)	7.4 (188)	1.17 (29.7)	1.09 (27.7)	.035 (.9)	.87 X 1.07 (22.1 X 27.2)	50 ** (222)	STANDARD	.72 (326)

NOTES:

- *1) SEE CURRENT PRICE SHEET FOR PART NUMBER SUFFIX DESIGNATION FOR PACKAGE SIZE AND PART COLOR.
- **2) LOOP TENSILE IS PER LEG OF STRAP.

CAD FILENAME/LAYERS										DIMENSIONS IN PARENTHESES ARE IN METRIC UNITS.						
										<h1>PANDUIT</h1> <p>CORP. TINLEY PARK, ILLINOIS</p> <h2>PAN-TY® MARKER TIE</h2> <h3>PLM SERIES</h3>						
										UNLESS OTHERWISE SPECIFIED, DIMENSIONAL TOLERANCES ARE: (.X) ± ---- (.XXX) ± .020(.51) (.XX) ± .02(.5) ANGLES ± ----						
										UNLESS OTHERWISE SPECIFIED, ALL DIMENSIONS ARE GIVEN IN INCHES, THIRD ANGLE PROJECTION.						
										DRAWN BY SARGIS		MAT'L: NYLON 6/6		SCALE NONE		
										DATE 9-16-82		DRAWING NO. SS-17670		DWG A		
										CHK'D						
REV	DATE	BY	CHK	DESCRIPTION				ECN - R	CUST	SUP						
5	3/10/03	JABO		CORRECTED G DIMENSION TO 1.17, WAS 1.13				17670	5							

Mouser Electronics

Authorized Distributor

Click to View Pricing, Inventory, Delivery & Lifecycle Information:

[Panduit:](#)

[PL2M2S-D](#)