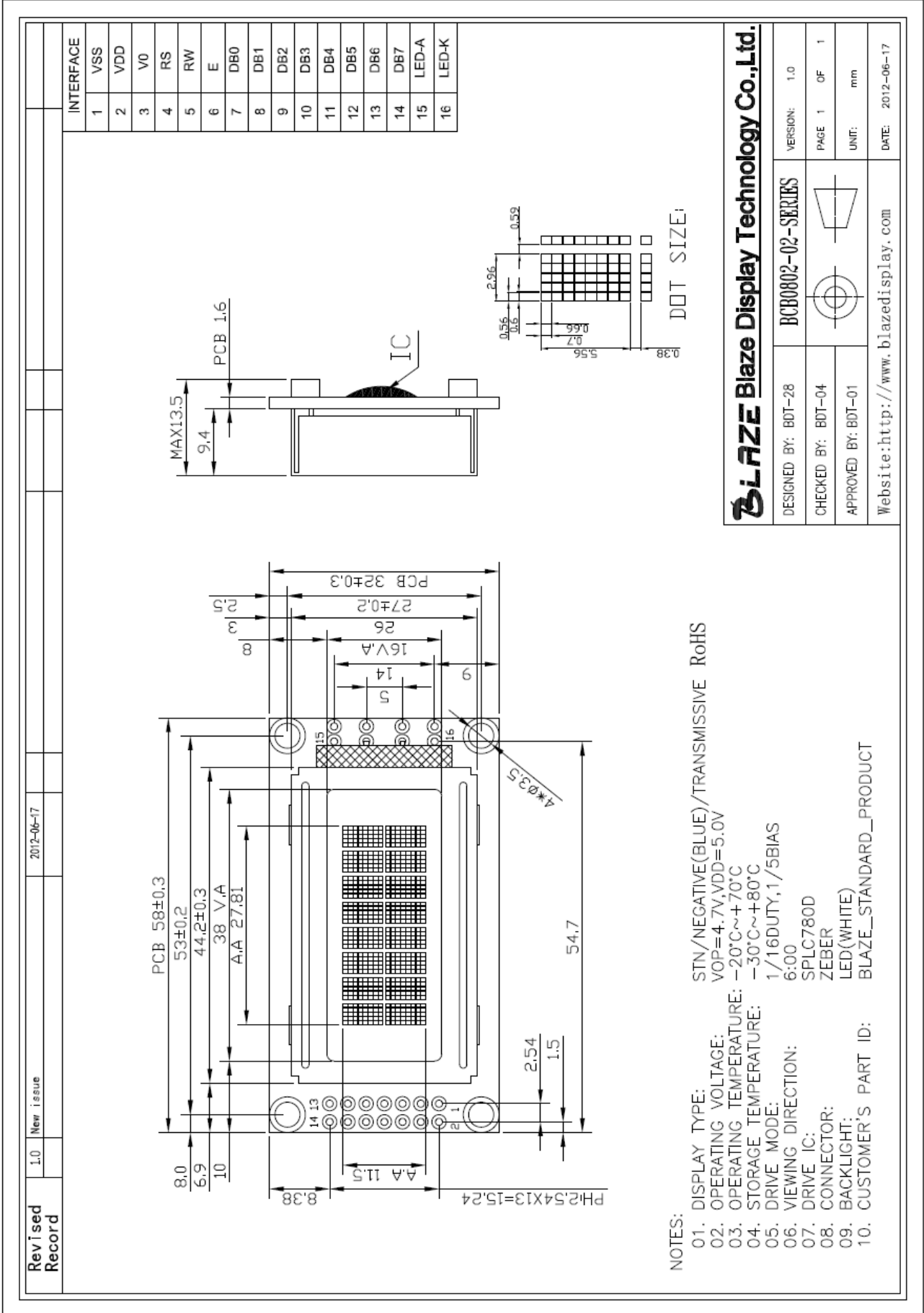


1.4 Mechanical Drawing



BLAZE Blaze Display Technology Co.,Ltd.

DESIGNED BY: BDT-28 BCB0802-02-SERIES VERSION: 1.0

CHECKED BY: BDT-04 PAGE 1 OF 1

APPROVED BY: BDT-01 UNIT: mm

Website: <http://www.blazedisplay.com> DATE: 2012-06-17

- NOTES:
- DISPLAY TYPE: STN/NEGATIVE(BLUE)/TRANSMISSIVE RoHS
 - OPERATING VOLTAGE: VOP=4.7V,VDD=5.0V
 - OPERATING TEMPERATURE: -20°C~+70°C
 - STORAGE TEMPERATURE: -30°C~+80°C
 - DRIVE MODE: 1/16DUTY,1/5BIAS
 - VIEWING DIRECTION: 6:00
 - DRIVE IC: SPLC780D
 - CONNECTOR: ZEBER
 - BACKLIGHT: LED(WHITE)
 - CUSTOMER'S PART ID: BLAZE_STANDARD_PRODUCT

1.0	New issue	2012-06-17
-----	-----------	------------

Revised Record

