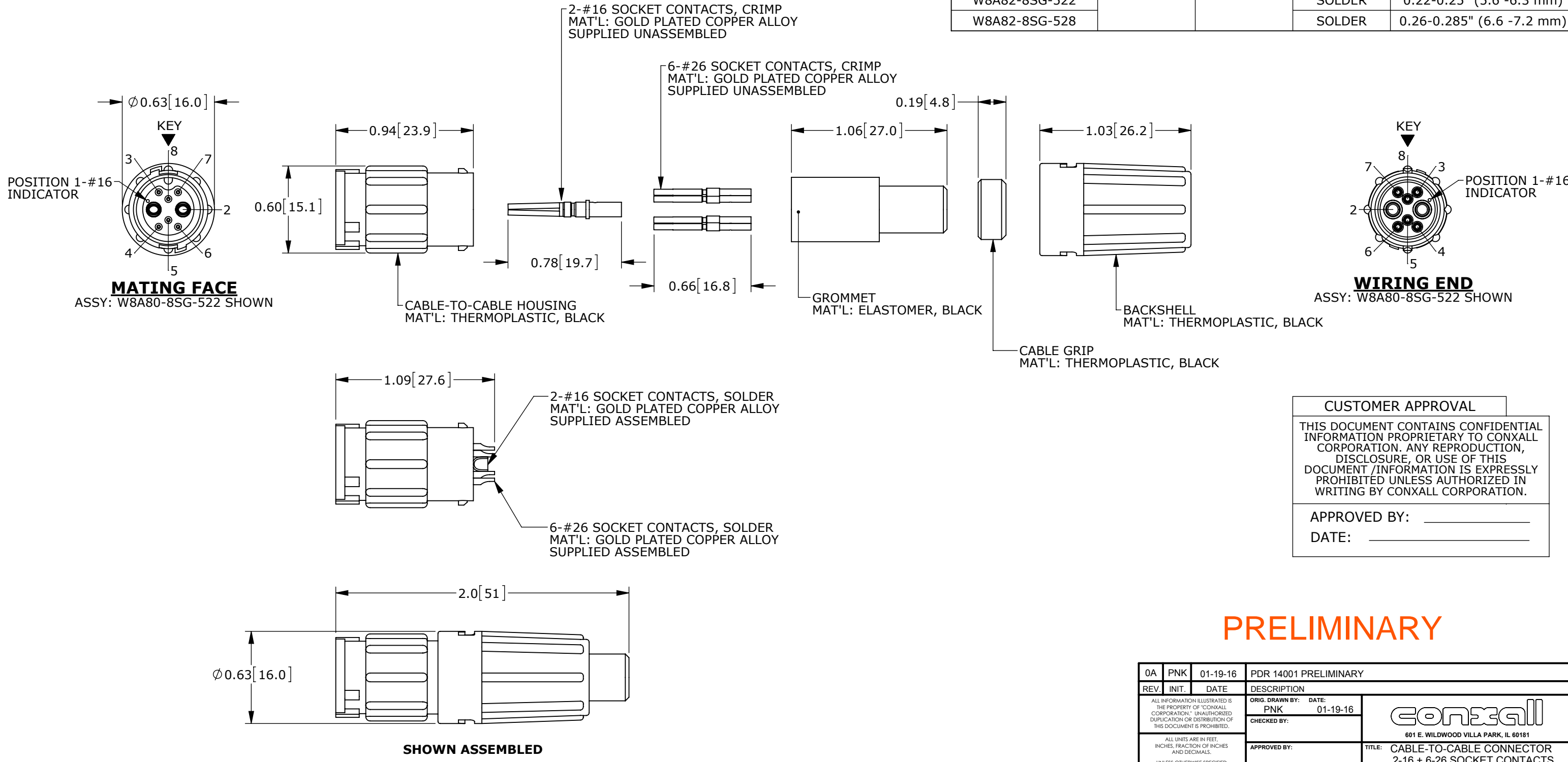


NOTES:
 1. ALL PARTS TO BE BULK PACKED.
 2. SEE DRAWING HPMIMIX FOR HOLE PATTERN.
 3. DIMENSIONS ARE FOR REFERENCE ONLY.

CONNECTOR P/N	POSITIONS		CONTACT STYLE	CABLE O.D. RANGE
	#16	#26		
W8A80-8SG-513	2	6	CRIMP	0.13-0.15" (3.3 -3.8 mm)
W8A80-8SG-516			CRIMP	0.16-0.18" (4.1 -4.6 mm)
W8A80-8SG-519			CRIMP	0.19-0.21" (4.8 -5.3 mm)
W8A80-8SG-522			CRIMP	0.22-0.25" (5.6 -6.3 mm)
W8A80-8SG-528			CRIMP	0.26-0.285" (6.6 -7.2 mm)
W8A82-8SG-513			SOLDER	0.13-0.15" (3.3 -3.8 mm)
W8A82-8SG-516			SOLDER	0.16-0.18" (4.1 -4.6 mm)
W8A82-8SG-519			SOLDER	0.19-0.21" (4.8 -5.3 mm)
W8A82-8SG-522			SOLDER	0.22-0.25" (5.6 -6.3 mm)
W8A82-8SG-528			SOLDER	0.26-0.285" (6.6 -7.2 mm)

CUSTOMER PRINT

PART NUMBER: W8A8X-8SG-5XX_CD



CUSTOMER APPROVAL

THIS DOCUMENT CONTAINS CONFIDENTIAL INFORMATION PROPRIETARY TO CONXALL CORPORATION. ANY REPRODUCTION, DISCLOSURE, OR USE OF THIS DOCUMENT /INFORMATION IS EXPRESSLY PROHIBITED UNLESS AUTHORIZED IN WRITING BY CONXALL CORPORATION.

APPROVED BY: _____
 DATE: _____

PRELIMINARY

RoHS COMPLIANT

0A	PNK	01-19-16	PDR 14001 PRELIMINARY
REV.	INIT.	DATE	DESCRIPTION
			ORIG. DRAWN BY: PNK DATE: 01-19-16
<small>ALL INFORMATION ILLUSTRATED IS THE PROPERTY OF CONXALL CORPORATION. UNAUTHORIZED DUPLICATION OR DISTRIBUTION OF THIS DOCUMENT IS PROHIBITED.</small>			 601 E. WILDWOOD VILLA PARK, IL 60181
<small>ALL UNITS ARE IN FEET, INCHES, FRACTION OF INCHES AND DECIMALS. UNLESS OTHERWISE SPECIFIED TOLERANCES: 3 PLACE DECIMALS ±.005 ANGLES ±1° FRACTIONS ±1/16</small>			
<small>APPROVED BY:</small>		<small>SCALE: NTS</small>	<small>TITLE: CABLE-TO-CABLE CONNECTOR 2-16 + 6-26 SOCKET CONTACTS MINI-CON-X POWER/SIGNAL</small>
<small>FILE: W8A8X-8SG-5XX_CD</small>		<small>SIZE: B</small>	<small>CUSTOMER: STANDARD PRODUCT</small>
<small>DIRECTORY: SLW</small>		<small>SHEET: 1 OF 1</small>	<small>PART NUMBER: W8A8X-8SG-5XX_CD</small>
			<small>REV: 0A</small>

Mouser Electronics

Authorized Distributor

Click to View Pricing, Inventory, Delivery & Lifecycle Information:

[Switchcraft:](#)

[W8A82-8SG-522](#) [W8A80-8SG-528](#) [W8A82-8SG-528](#) [W8A80-8SG-522](#)