

# Product Data Sheet

DIN 41612 Female straight, type D,  
Part No. 106-40066

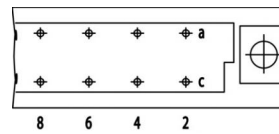
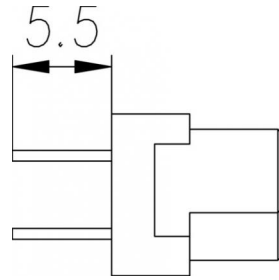
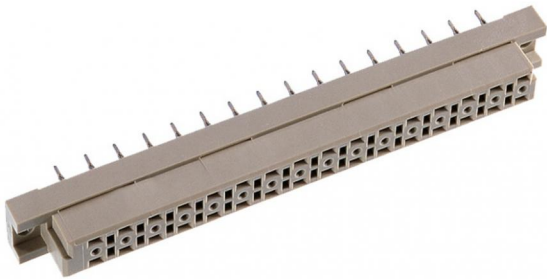


Illustration similar



Parallel



Perpendicular



Through Hole



Power



Rugged

- Termination length 5.5 mm
- 32 contacts
- hand solder
- performance level 2



» to product on [www.ept.de](http://www.ept.de)



» to product group DIN 41612

# Product Data Sheet

DIN 41612 Female straight, type D,  
Part No. 106-40066



## Technical Specifications

### Basics

Specification	IEC 60603-2 (DIN 41612)
Performance Level	2
No. of Contacts	32
Termination Technology	solder
Termination Length	5.5 mm
Board-to-Board Distance	17.85 mm
Operating Temperature Range	-55°C to +125°C

### Material

Insulator Material	PBT glass filled UL 94 V-0
CTI value <i>IEC 60112</i>	200
Contact Material	Copper alloy

### Mechanical

Pitch	5.08 mm
Mating Force	< 40 N
Separating Force per Pin	> 0.15 N
Durability	400 mating cycles

### Electrical

Operational Current	5.6 A
Contact Resistance	< 15 mΩ
Clearance and Creepage	≥ 3.0 mm
Insulation Resistance	> 10 <sup>6</sup> MΩ
Test Voltage	1500 V

### Processing

Soldering Temperature	to 260°C
-----------------------	----------

### Approval / Compliance

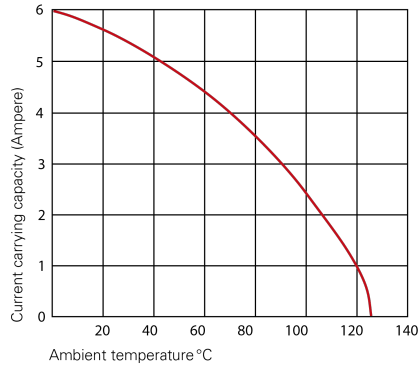
UL file	E130314
Environment	RoHS compliant

# Product Data Sheet

DIN 41612 Female straight, type D,  
Part No. 106-40066



## Derating Diagram



### Type D, E, F, G

20 °C 5.6 A  
70 °C 4.0 A  
100 °C 2.5 A

# Product Data Sheet

DIN 41612 Female straight, type D,  
Part No. 106-40066

---



## Modifications

Available on request

- Without flange
- Special contact length
- Performance levels I + III or customer-specific
- Contact arrangement

## Accessories

- » DIN 41612 Coding type D, E, F and G  
Part Number 106-10001

## Drawings

Component data in 2D and 3D format you can download here:

» [PDF](#)