

## Han 70A axial module, male 6-16 mm<sup>2</sup>

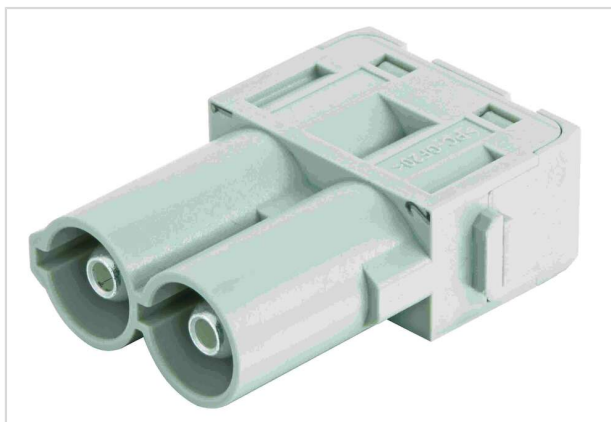


Image is for illustration purposes only. Please refer to product description.

|                    |   |
|--------------------|---|
| Part number        | 09 14 002 2646  |
| Specification      | Han 70A axial module, male 6-16 mm <sup>2</sup>                                       |
| HARTING eCatalogue | <a href="https://b2b.harting.com/09140022646">https://b2b.harting.com/09140022646</a> |

### Identification

|                    |                  |
|--------------------|------------------|
| Category           | Modules          |
| Series             | Han-Modular®     |
| Type of module     | Han® 70 A module |
| Size of the module | Single module    |

### Version

|                    |                         |
|--------------------|-------------------------|
| Termination method | Axial screw termination |
| Gender             | Male                    |
| Number of contacts | 2                       |

### Technical characteristics

|                         |                           |
|-------------------------|---------------------------|
| Conductor cross-section | 6 ... 16 mm <sup>2</sup>  |
| Rated current           | 70 A                      |
| Rated voltage           | 1,000 V                   |
| Rated impulse voltage   | 8 kV                      |
| Pollution degree        | 3                         |
| Insulation resistance   | >10 <sup>10</sup> Ω       |
| Contact resistance      | ≤0.5 mΩ                   |
| Stripping length        | 11 ... 12 mm              |
| Tightening torque       | 2 Nm @ 6 mm <sup>2</sup>  |
|                         | 3 Nm @ 10 mm <sup>2</sup> |
|                         | 4 Nm @ 14 mm <sup>2</sup> |
|                         | 4 Nm @ 16 mm <sup>2</sup> |
| Limiting temperature    | -40 ... +125 °C           |



Pushing Performance  
 Since 1945

## Technical characteristics

|               |      |
|---------------|------|
| Mating cycles | ≥500 |
|---------------|------|

## Material properties

|   |  |
|---|--|
| Material (insert)                         | Polycarbonate (PC)                                     |
| Colour (insert)                           | RAL 7032 (pebble grey)                                 |
| Material (contacts)                       | Copper alloy   |
| Surface (contacts)                        | Silver plated  |
| Material flammability class acc. to UL 94 | V-0  |
| RoHS                                      | compliant with exemption                               |
| RoHS exemptions                           | 6(c): Copper alloy containing up to 4 % lead by weight |
| ELV status                                | compliant with exemption                               |
| China RoHS                                | 50   |
| REACH Annex XVII substances               | Not contained  |
| REACH ANNEX XIV substances                | Not contained  |
| REACH SVHC substances                     | Yes  |
| REACH SVHC substances                     | Lead   |
| ECHA SCIP number                          | 5dbb3851-b94e-4e88-97a1-571845975242                   |
| California Proposition 65 substances      | Yes  |
| California Proposition 65 substances      | Lead<br>Nickel   |
| Fire protection on railway vehicles       | EN 45545-2 (2020-08)                                   |
| Requirement set with Hazard Levels        | R22 (HL 1-3)<br>R23 (HL 1-3)                           |

## Specifications and approvals

|                |   |
|----------------|---|
| Specifications | IEC 60664-1<br>IEC 61984  |
| UL / CSA       | UL 1977 ECBT2.E235076<br>UL 2237 PVVA2.E318390<br>CSA-C22.2 No. 182.3 PVVA8.E318390 |
| Approvals      | DNV GL  |

## Commercial data

|                   |         |
|-------------------|---------|
| Packaging size    | 2       |
| Net weight        | 32.38 g |
| Country of origin | Germany |



**Pushing Performance**  
Since 1945

## Commercial data

|                                |   |
|--------------------------------|---|
| European customs tariff number | 85366990  |
| GTIN                           | 5713140019652   |
| eCl@ss                         | 27440217 Module for industrial connectors (power/signals) |