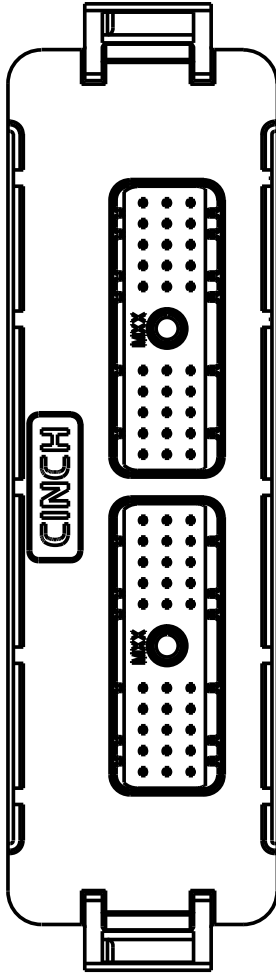
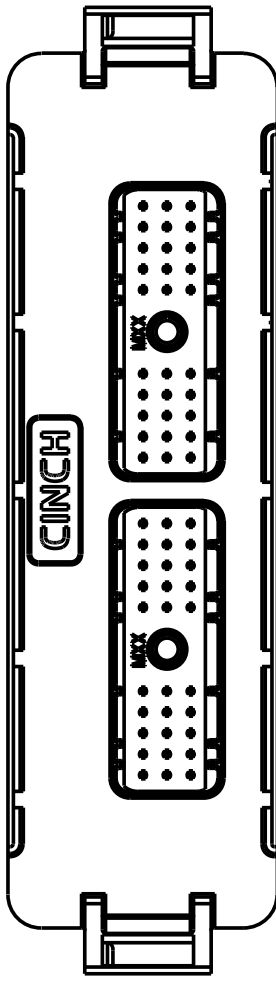
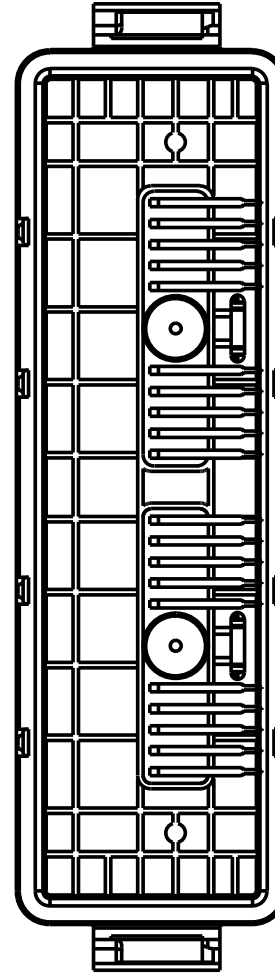
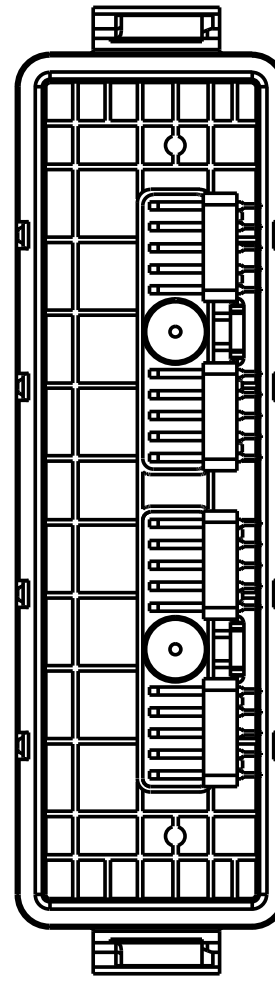


8	7	6	5	4	3	2	1
CINCH PART NUMBER MATRIX							
P/N: 581 01 60 005				P/N: 581 01 60 006			
60-WAY HEADER ASSEMBLY WITHOUT FERRITE FILTERS				60-WAY HEADER ASSEMBLY WITH FERRITE FILTERS			
							
							
<p style="text-align: center;">MATES WITH CINCH HARNESS CONNECTORS P/N: 581 01 30 028 (30-WAY) AND 581 01 30 029 (30-WAY)</p>							

NOTE:

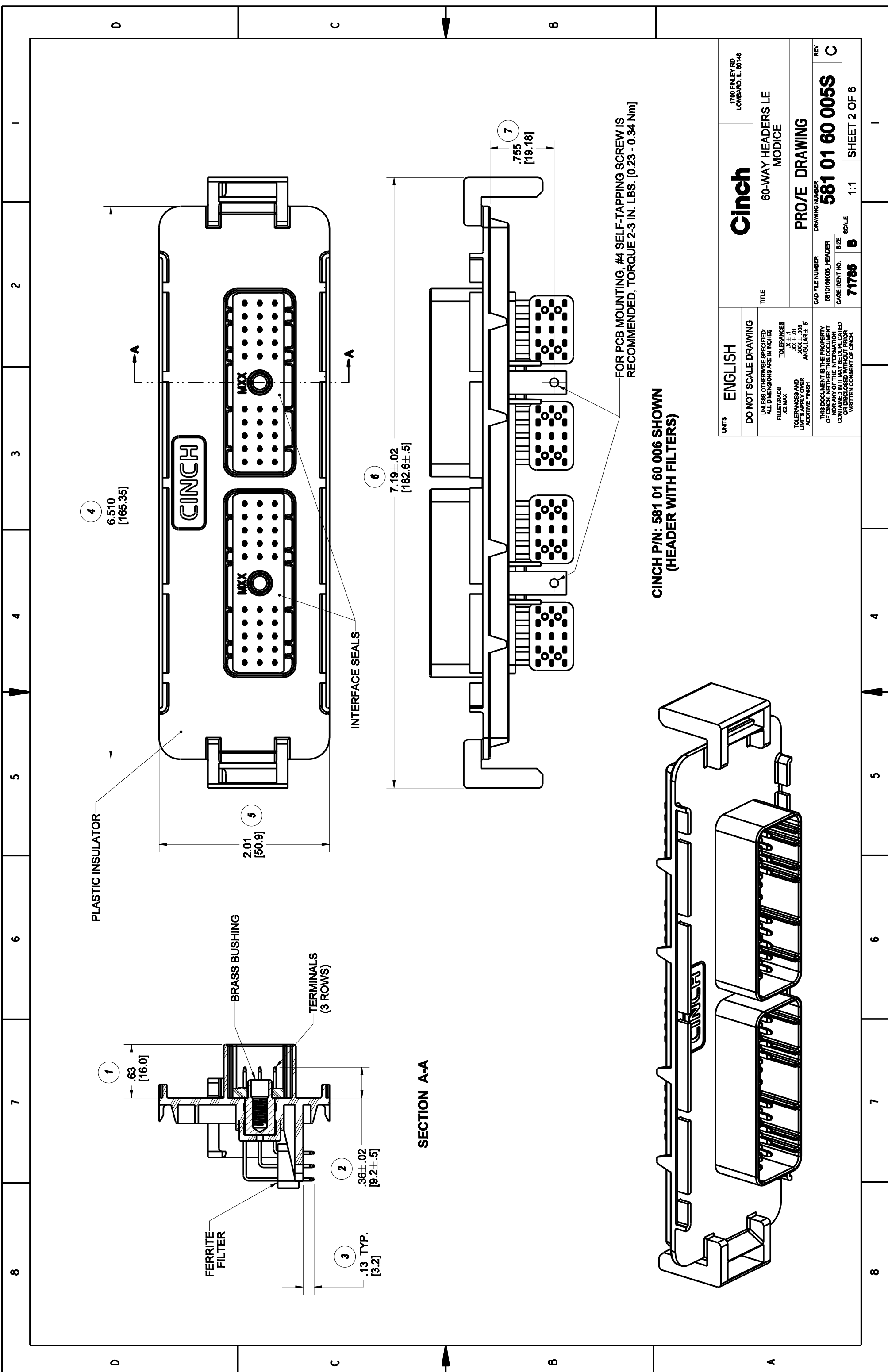
- ALL DIMENSIONS ARE IN INCHES; DIMENSIONS INSIDE [XX] ARE IN mm, AS REF. ONLY.
- MATERIALS:
INTERFACE SEAL: SILICONE RUBBER, COLOR BLUE;
INSULATOR: 30 % GLASS FILLED POLYMER, COLOR BLACK;
BUSHING: BRASS ALLOY, UNPLATED 10-24 UNC THREAD;
TERMINAL BLADE: 1.5 mm BRASS WITH TIN OVER NICKEL PLATING;
FILTERS: FERRITE BLOCKS.
- ALL HEADERS ARE REFLOW AND WAVE SOLDERING PROCESS, ROHS COMPLIANT.
- MATES WITH CINCH SHS PUSH-TO-SEAT HARNESS CONNECTORS (SEE TABLE ABOVE).
- THERMALLY CONDUCTIVE ADHESIVE PASTE SOLD SEPARATELY; RECOMMENDED IS LOCTITE 383.
- SPRING PLATES ARE SOLD SEPARATELY (FOR INSTALLATION REFER TO ENCLOSURE ASSEMBLY INSTRUCTIONS) (IT IS RECOMMENDED THAT THE 4 SLOTS BE PROTECTED DURING CONFORMAL COATING)
- STANDARD PACKAGE SIZE: 36 PARTS/CARTON BOX.

DRAWING REVISIONS			
REV	DOCUMENT	APP	DATE
A	D.O. 05-1217 REL. FOR PRODUCTION	A.C.	9/9/05
B	ECN: 05A634 ADDED SHEET 5 ADDED SHEET 6 MODIFIED SHEET 3 MODIFIED SHEET 4	A.C.	3/23/06
C	ECN: 06A477 REFORMATTED DRAWING PCB LAYOUTS REDRAWN WITH ADDITIONAL KEEP OUT AREAS	A.C.	1/8/07

RoHS COMPLIANT

UNITS	ENGLISH	PRO/E	DATE	9/02/05
DO NOT SCALE DRAWING	UNLESS OTHERWISE SPECIFIED: ALL DIMENSIONS ARE IN INCHES	B. KOSTIC	DESIGN ENGINEER	9/02/05
FILE/TRADJ 02 MAX	TOLERANCES XX ± .01 XXX ± .006 ANGULAR ± .5	B. KOSTIC	DESIGN ENGINEERING MGR.	9/02/05
TOLERANCES AND LIMITS APPLY OVER ADDITIVE FINISH	THIS DOCUMENT IS THE PROPERTY OF CINCH. NEITHER THIS DOCUMENT NOR THE INFORMATION CONTAINED HEREIN IS TO BE REPRODUCED OR DISCLOSED WITHOUT PRIOR WRITTEN CONSENT OF CINCH.	A. CAINES	MFG. ENGINEERING	9/15/05
		R. GARZA	QUALITY ASSURANCE	9/15/05
		D. DE LA PENA		9/15/05

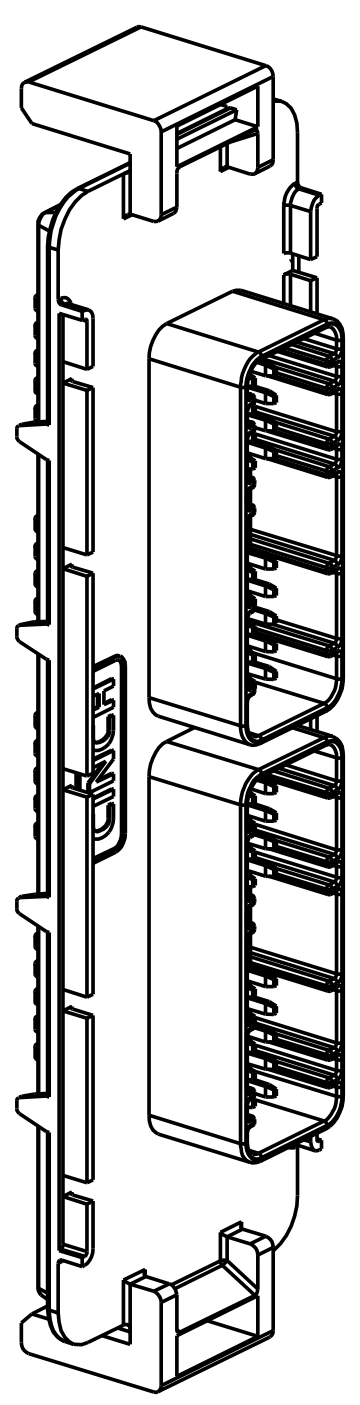
Cinch		1700 FINLEY RD LOMBARD, ILL. 60148	
60-WAY HEADERS LE MODICE		CONTROL SPEC NUMBER	
MATERIAL		PROJECT NUMBER A 14562	
MATERIAL SPEC NUMBER		DRAWING NUMBER	
FINISH		9810160006_HEADER	
CAD FILE NUMBER		CAGE IDENT NO.	
71785		7:10	
SCALE		SHEET 1 OF 6	

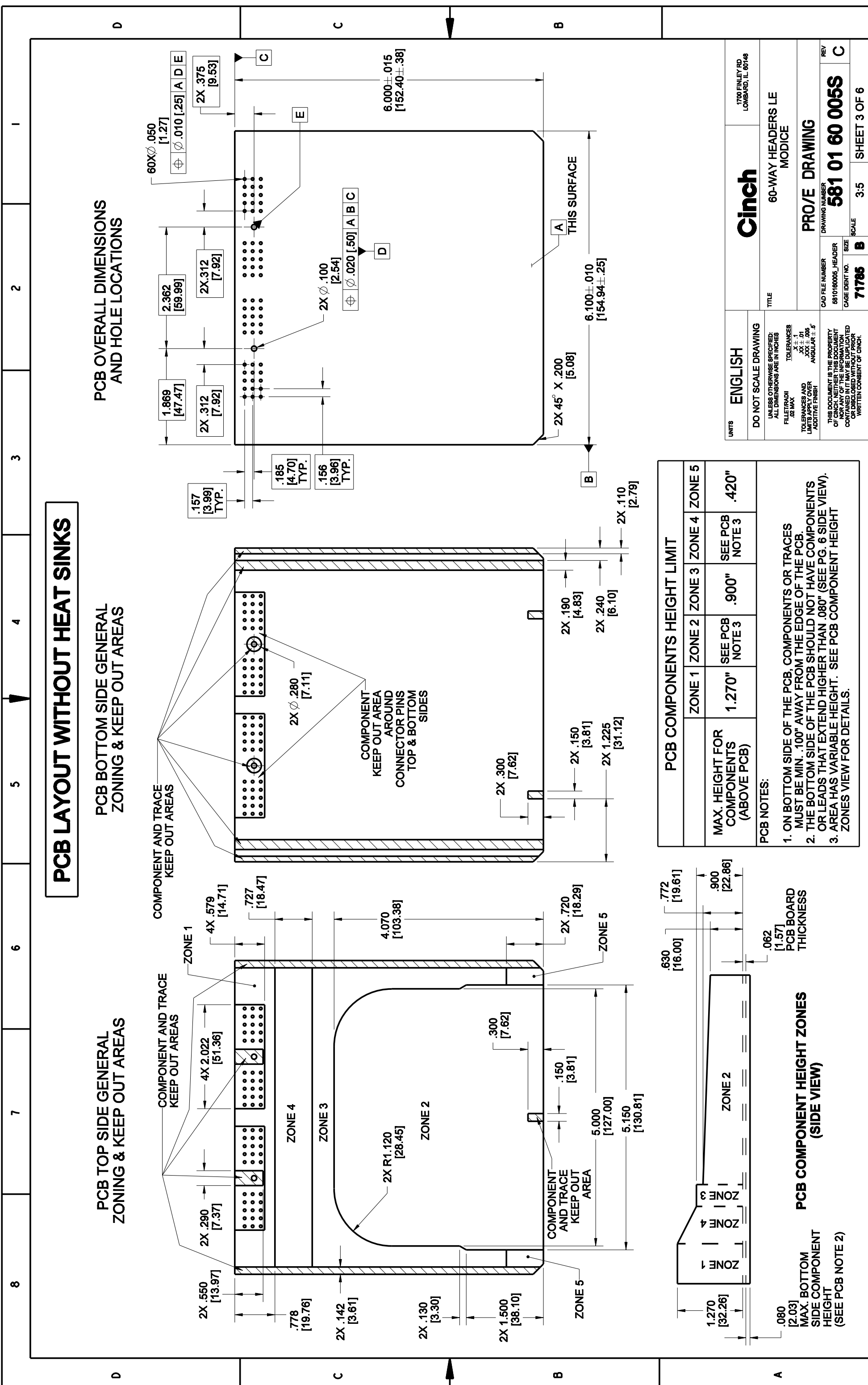


FOR PCB MOUNTING, #4 SELF-TAPPING SCREW IS RECOMMENDED, TORQUE 2-3 IN. LBS. [0.23 - 0.34 Nm]

CINCH P/N: 581 01 60 006 SHOWN (HEADER WITH FILTERS)

UNITS	ENGLISH	Cinch		1700 FINLEY RD LOMBARD, IL 60148	
DO NOT SCALE DRAWING		TITLE		60-WAY HEADERS LE MODICE	
UNLESS OTHERWISE SPECIFIED: ALL DIMENSIONS ARE IN INCHES		CAD FILE NUMBER		DRAWING NUMBER	
FILLET/RADI .02 MAX	TOLERANCES X ± .01 XX ± .005 XXX ± .006	5810160006_HEADER	581 01 60 005S	REV	C
TOLERANCES AND LIMITS APPLY OVER ADDITIVE FINISH	ANGULAR ± .5°	CAGE IDENT NO.	71785	SCALE	1:1
THIS DOCUMENT IS THE PROPERTY OF CINCH. NEITHER THIS DOCUMENT NOR THE INFORMATION CONTAINED HEREIN IS TO BE REPRODUCED OR DISCLOSED WITHOUT PRIOR WRITTEN CONSENT OF CINCH.		SHEET 2 OF 6			





PCB LAYOUT WITHOUT HEAT SINKS

PCB TOP SIDE GENERAL ZONING & KEEP OUT AREAS

PCB BOTTOM SIDE GENERAL ZONING & KEEP OUT AREAS

PCB OVERALL DIMENSIONS AND HOLE LOCATIONS

PCB COMPONENTS HEIGHT LIMIT					
	ZONE 1	ZONE 2	ZONE 3	ZONE 4	ZONE 5
MAX. HEIGHT FOR COMPONENTS (ABOVE PCB)	1.270"	SEE PCB NOTE 3	.900"	SEE PCB NOTE 3	.420"

PCB NOTES:

- ON BOTTOM SIDE OF THE PCB, COMPONENTS OR TRACES MUST BE MIN. .100" AWAY FROM THE EDGE OF THE PCB.
- THE BOTTOM SIDE OF THE PCB SHOULD NOT HAVE COMPONENTS OR LEADS THAT EXTEND HIGHER THAN .080" (SEE PG. 6 SIDE VIEW).
- AREA HAS VARIABLE HEIGHT. SEE PCB COMPONENT HEIGHT ZONES VIEW FOR DETAILS.

Cinch

1700 FINLEY RD
LOMBARD, IL 60148

60-WAY HEADERS LE
MODICE

PRO/E DRAWING

DRAWING NUMBER
581 01 60 0055

REVISION
C

UNITS
ENGLISH

DO NOT SCALE DRAWING

UNLESS OTHERWISE SPECIFIED:
ALL DIMENSIONS ARE IN INCHES

FILLET/RADIUS
.02 MAX

TOLERANCES
X ± .01
XX ± .005
XXX ± .005
ANGULAR ± .5°

TOLERANCES AND LIMITS APPLY OVER ADDITIVE FINISH

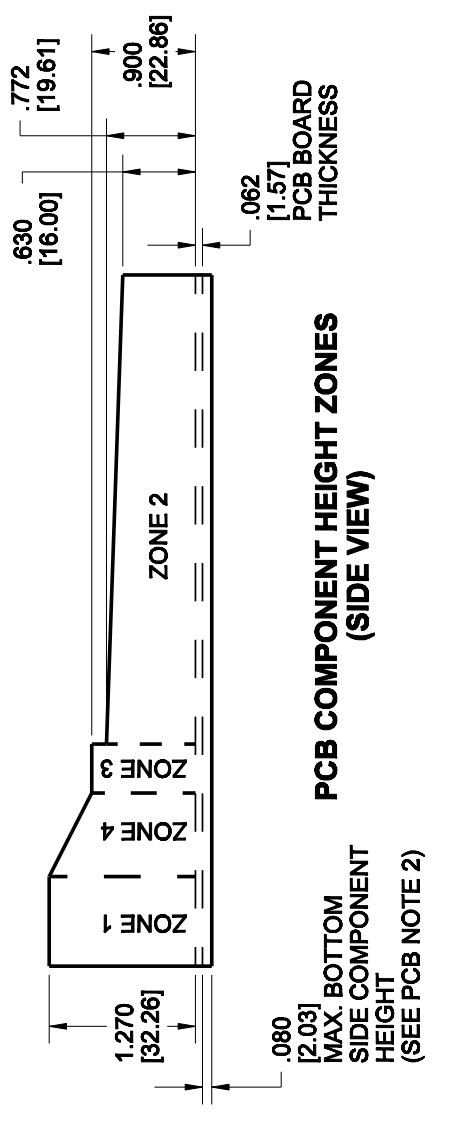
THIS DOCUMENT IS THE PROPERTY OF CINCH. NEITHER THIS DOCUMENT NOR ITS CONTENTS ARE TO BE REPRODUCED OR DISCLOSED WITHOUT PRIOR WRITTEN CONSENT OF CINCH.

CAD FILE NUMBER
8810160000_HEADER

CAGE IDENT. NO.
71785

SCALE
3:5

SHEET 3 OF 6

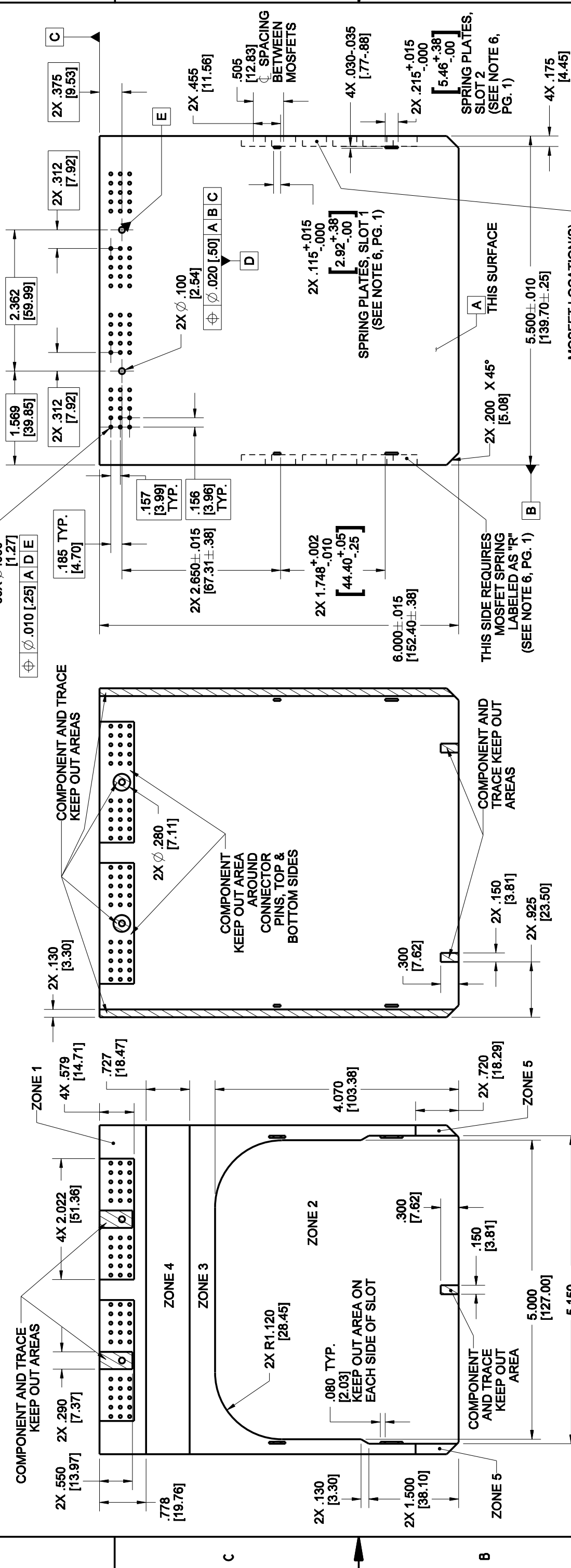


PCB LAY-OUT WITH TWO HEAT SINKS

PCB TOP SIDE GENERAL ZONING & KEEP OUT AREAS

PCB BOTTOM SIDE GENERAL ZONING & KEEP OUT AREAS

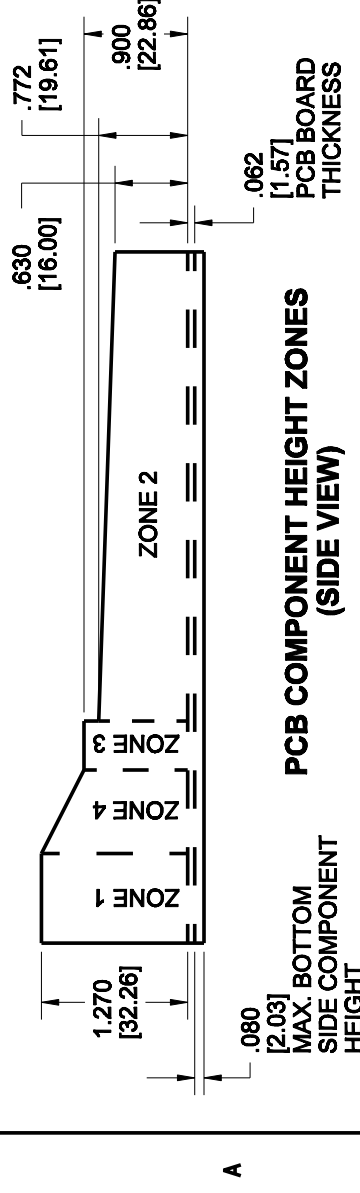
PCB OVERALL DIMENSIONS AND HOLE LOCATIONS



PCB COMPONENTS HEIGHT LIMIT					
	ZONE 1	ZONE 2	ZONE 3	ZONE 4	ZONE 5
MAX. HEIGHT FOR COMPONENTS (ABOVE PCB)	1.270"	SEE PCB NOTE 4	.900"	SEE PCB NOTE 4	.420"

PCB NOTES:

- IF MOSFET SPRINGS ARE USED, ZONE 3 SHOULD CONTAIN ONLY MOSFETS AND TRACES BETWEEN THE SPRINGS AND EDGE OF THE BOARD.
- ON BOTTOM SIDE OF THE PCB, COMPONENTS OR TRACES MUST BE MIN. .100" AWAY FROM THE EDGE OF THE PCB.
- THE BOTTOM SIDE OF THE PCB SHOULD NOT HAVE COMPONENTS OR LEADS THAT EXTEND HIGHER THAN .080" (SEE PG. 6 SIDE VIEW).
- AREA HAS VARIABLE HEIGHT. SEE PCB COMPONENT HEIGHT ZONES VIEW FOR DETAILS.



UNITS ENGLISH

DO NOT SCALE DRAWING
UNLESS OTHERWISE SPECIFIED:
ALL DIMENSIONS ARE IN INCHES

FILLET/RADIUS: .02 MAX
TOLERANCES:
X ± .01
X ± .01
X ± .005
ANGULAR ± .5°

TOLERANCES AND LIMITS APPLY OVER ADDITIVE FINISH

THIS DOCUMENT IS THE PROPERTY OF CINCH. NEITHER THIS DOCUMENT NOR ITS CONTENTS SHALL BE REPRODUCED OR DISCLOSED WITHOUT PRIOR WRITTEN CONSENT OF CINCH.

Cinch
1700 FINLEY RD
LOMBARD, IL 60148

TITLE: 60-WAY HEADERS LE MODICE

DRAWING NUMBER: PRO/E DRAWING 581 01 60 0055

REV: C

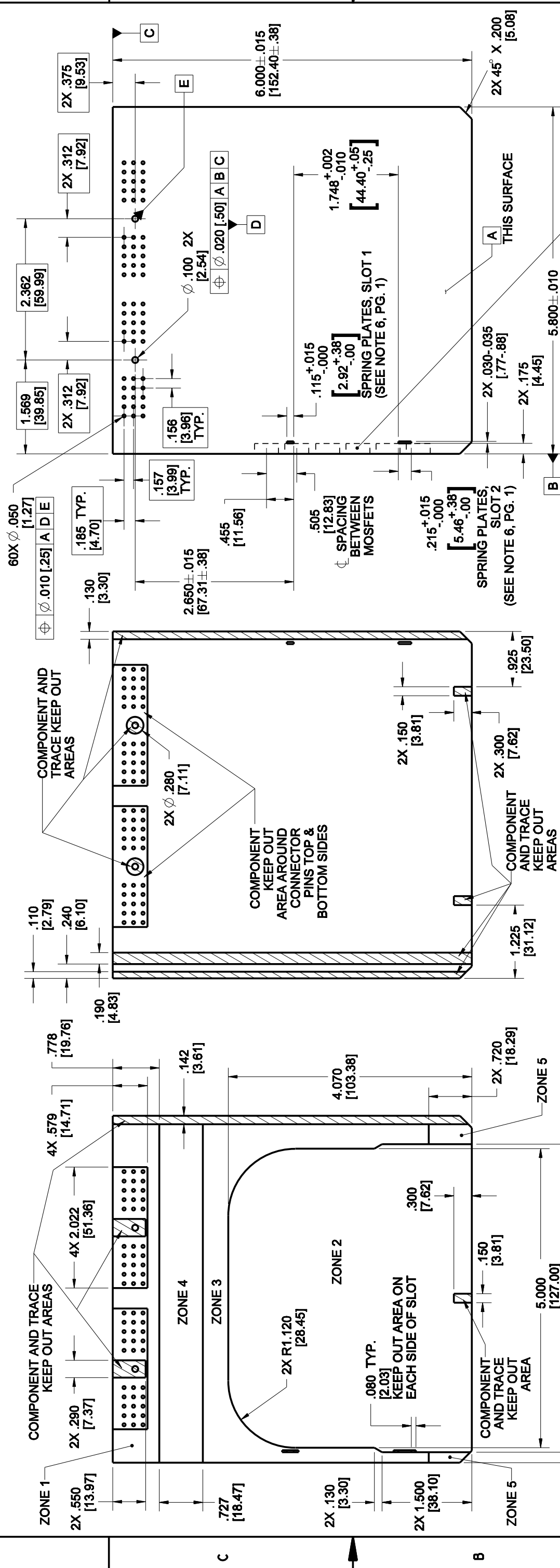
CAD FILE NUMBER: 8810160000_HEADER
CAGE IDENT NO.: 71785
SCALE: 3:5
SHEET 4 OF 6

PCB LAY-OUT WITH ONE HEAT SINK

PCB TOP SIDE GENERAL ZONING & KEEP OUT AREAS

PCB BOTTOM SIDE GENERAL ZONING & KEEP OUT AREAS

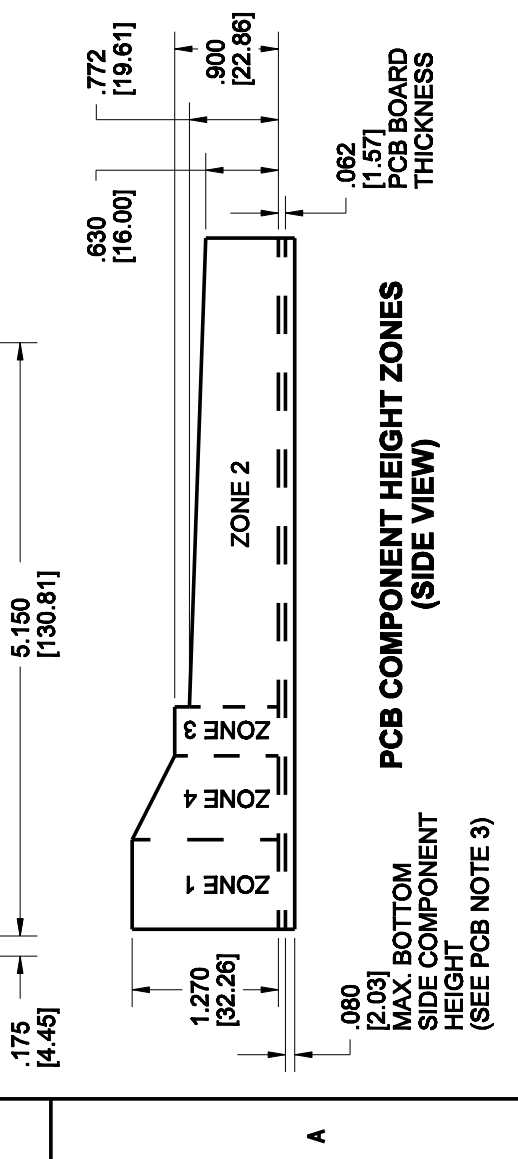
PCB OVERALL DIMENSIONS AND HOLE LOCATIONS



PCB COMPONENTS HEIGHT LIMIT					
	ZONE 1	ZONE 2	ZONE 3	ZONE 4	ZONE 5
MAX. HEIGHT FOR COMPONENTS (ABOVE PCB)	1.270"	SEE PCB NOTE 4	.900"	SEE PCB NOTE 4	.420"

PCB NOTES:

- IF MOSFET SPRINGS ARE USED, ZONE 3 SHOULD CONTAIN ONLY MOSFETS AND TRACES BETWEEN THE SPRINGS AND EDGE OF THE BOARD.
- ON BOTTOM SIDE OF THE PCB, COMPONENTS OR TRACES MUST BE MIN. .100" AWAY FROM THE EDGE OF THE PCB.
- THE BOTTOM SIDE OF THE PCB SHOULD NOT HAVE COMPONENTS OR LEADS THAT EXTEND HIGHER THAN .080" (SEE PG. 6 SIDE VIEW).
- AREA HAS VARIABLE HEIGHT. SEE PCB COMPONENT HEIGHT ZONES VIEW FOR DETAILS.



UNITS
ENGLISH

DO NOT SCALE DRAWING
UNLESS OTHERWISE SPECIFIED:
ALL DIMENSIONS ARE IN INCHES

FILLET/RADIUS
.02 MAX

TOLERANCES
X ± .01
X ± .005
ANGULAR ± .5°

TOLERANCES AND LIMITS APPLY OVER ADDITIVE FINISH

THIS DOCUMENT IS THE PROPERTY OF CINCH. NEITHER THIS DOCUMENT NOR ITS CONTENTS SHALL BE REPRODUCED OR DISCLOSED WITHOUT PRIOR WRITTEN CONSENT OF CINCH.

Cinch
1700 FINLEY RD
LOMBARD, IL 60146

TITLE
60-WAY HEADERS LE MODICE

DRAWING NUMBER
581 01 60 005S

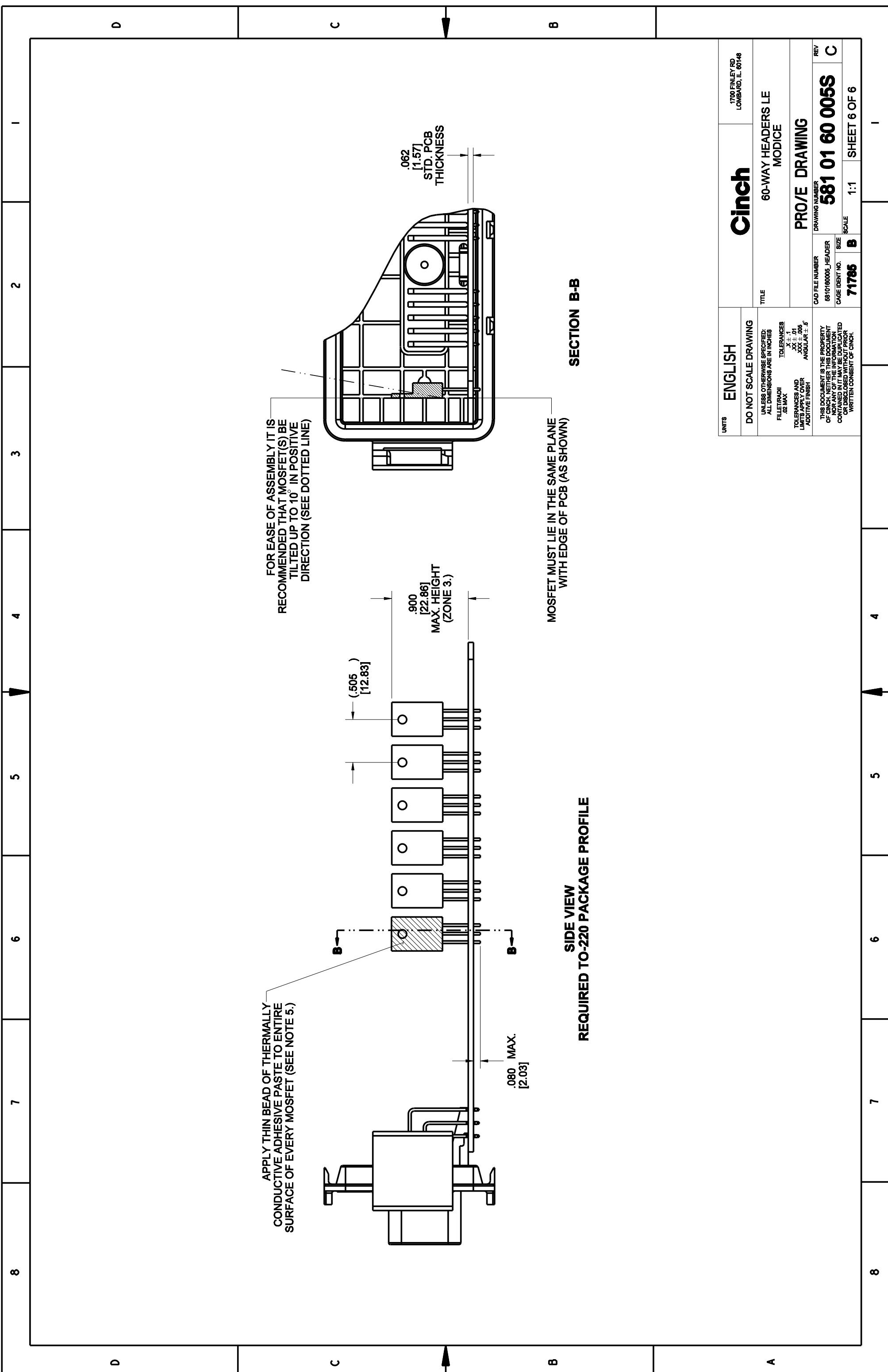
REV
C

CAD FILE NUMBER
6810160000_HEADER

CAGE IDENT NO.
71785

SCALE
3:5

SHEET 5 OF 6



APPLY THIN BEAD OF THERMALLY CONDUCTIVE ADHESIVE PASTE TO ENTIRE SURFACE OF EVERY MOSFET (SEE NOTE 5.)

FOR EASE OF ASSEMBLY IT IS RECOMMENDED THAT MOSFET(S) BE TILTED UP TO 10° IN POSITIVE DIRECTION (SEE DOTTED LINE)

MOSFET MUST LIE IN THE SAME PLANE WITH EDGE OF PCB (AS SHOWN)

**SIDE VIEW
REQUIRED TO-220 PACKAGE PROFILE**

SECTION B-B

UNITS	ENGLISH	Cinch		1700 FINLEY RD LOMBARD, IL 60148	
DO NOT SCALE DRAWING		TITLE		60-WAY HEADERS LE MODICE	
UNLESS OTHERWISE SPECIFIED: ALL DIMENSIONS ARE IN INCHES		TOLERANCES		DRAWING NUMBER	
FILLET/RADI .02 MAX		X ± .1		PRO/E DRAWING	
TOLERANCES AND LIMITS APPLY OVER ADDITIVE FINISH		.005 ± .01 .003 ± .005 ANGULAR ± .5°		CAD FILE NUMBER	
THIS DOCUMENT IS THE PROPERTY OF CINCH. NEITHER THIS DOCUMENT NOR THE INFORMATION CONTAINED HEREIN IS TO BE REPRODUCED, COPIED, OR DISCLOSED WITHOUT PRIOR WRITTEN CONSENT OF CINCH.		8810160000_HEADER		REV	
		CAGE IDENT NO.		581 01 60 0055	
		SIZE		C	
		SCALE		1:1	
		DRAWING NUMBER		SHEET 6 OF 6	
		71785		B	