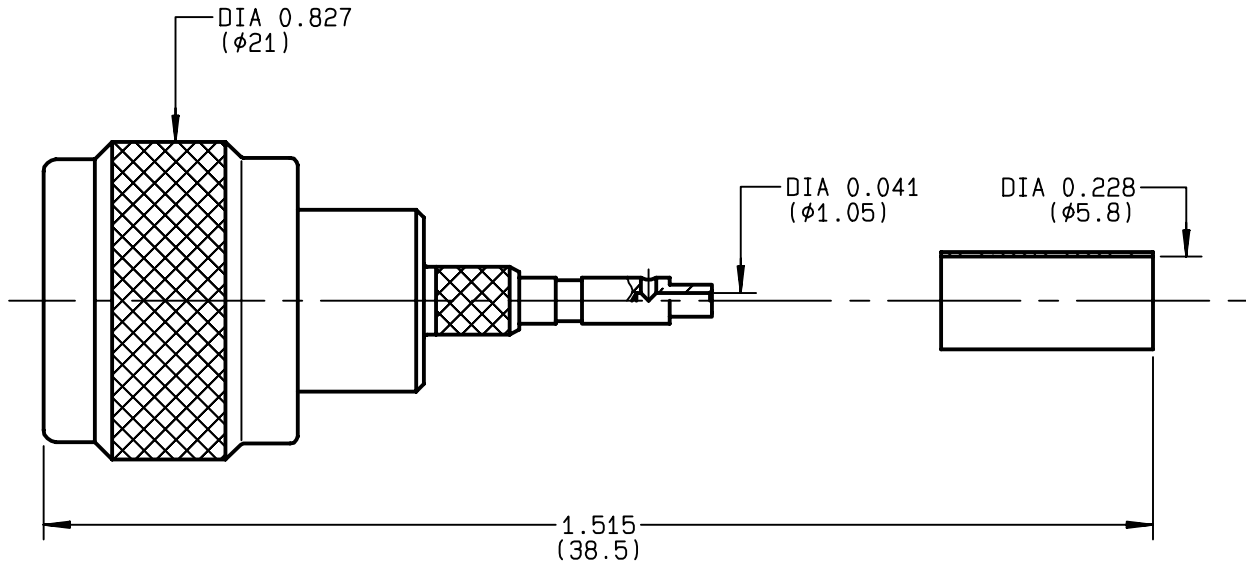


**STRAIGHT PLUG FULL CRIMP-TYPE  
CABLE 5/50 D**

**R161.083.000**  
**SERIES N**



|                                 |                                  |   |
|---------------------------------|----------------------------------|---|
| NOMINAL IMPEDANCE               | <b>50</b> Ω                      | CABLES : <b>KX 23</b><br><b>RG 142</b><br><b>RG 142 FTX</b><br><b>RG 223</b><br><b>RG 400</b> |
| FREQUENCY RANGE                 | <b>0-11</b> GHz                  |   |
| TEMPERATURE RATING              | <b>-55/+155</b> °C               |   |
| V.S.W.R                         | <b>1.30</b> + x F(GHz)Maxi       |   |
| RF INSERTION LOSS               | <b>0.048</b> √F(GHz) dB Maxi     |   |
| VOLTAGE RATING                  | <b>850</b> Veff Maxi             |   |
| DIELECTRIC WITHSTANDING VOLTAGE | <b>1500</b> Veff Mini            |   |
| INSULATION RESISTANCE           | <b>5000</b> MΩMini               |   |
| HERMETIC SEAL                   | <b>NA</b> Atm.cm <sup>3</sup> /s |   |
| LEAKAGE (pressurized only)      | <b>NA</b>                        |   |
| MECHANICAL DURABILITY           | <b>500</b> Cycles                | OTHERS CHARACTERISTICS  |
| WEIGHT                          | <b>27.3</b> gr                   | CABLE RETENTION <b>200</b> N Mini   |
| SPECIFICATION                   |                                  | CENTER CONTACT RETENTION  |
|                                 |                                  | Axial force - mating end <b>27</b> N Mini   |
|                                 |                                  | Axial force - opposite end <b>27</b> N Mini   |
|                                 |                                  | Torque <b>NA</b> cm.N Mini  |
|                                 |                                  | RECOMMENDED TORQUES   |
|                                 |                                  | Mating <b>130</b> cm.N  |
|                                 |                                  | Panel nut <b>NA</b> cm.N  |
|                                 |                                  | Clamp nut <b>NA</b> cm.N  |

| CONNECTOR PARTS | MATERIALS       | FINISH                 | (all values are given )<br>in micrometers |
|-----------------|-----------------|------------------------|---|
| BODY            | BRASS           | BBR 2                  |   |
| OUTER CONTACT   | BRASS           | BBR 2                  |   |
| CENTER CONTACT  | BRASS           | GOLD 0.5 OVER NICKEL 2 |   |
| INSULATOR       | PTFE            | -                      |   |
| GASKET          | SILICONE RUBBER | -                      |   |
| OTHERS PIECES   | BRASS           | BBR 2                  |   |

|                |                   |                  |
|----------------|-------------------|------------------|
| ISSUE          | CREATION DATE     | FILE PART-NUMBER |
| <b>9812J04</b> | <b>21/07/1993</b> | <b>EPC 96-07</b> |



BONMINI

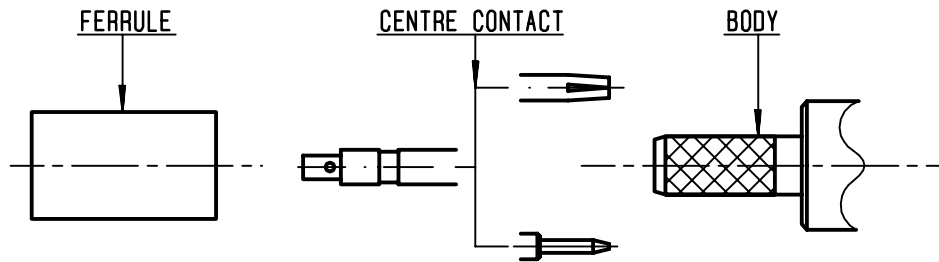
The information given here is subject to change without notice.  
Design changes may be in order to improve the product .

*Connect to the future*



**R161.083.000**

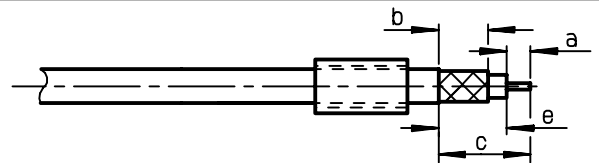
ISSUE **9812J04** SERIES **N**



①

Slide onto the cable the ferrule .  
Strip the cable .

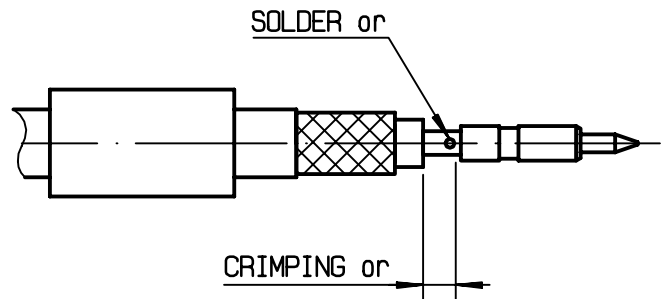
-  
-  
-



| Stripping | a     | b     | c     | d | e     |
|-----------|-------|-------|-------|---|-------|
| inch      | 0.177 | 0.315 | 0.551 | 0 | 0.374 |
| mm        | 4.5   | 8     | 14    |   | 9.5   |

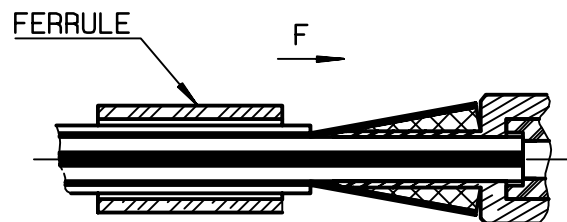
②

Slide on centre contact until it bottoms against cable dielectric .  
Solder or crimp centre contact .  
Crimping tool :R 282 223 000 (hex: .068) or R282 293 000 (M22520/5-01) + dies R282 235 011 (M22520/5-11)  
( We advice to solder centre contact to improve electrical performances only with the cable to PTFE dielectric.)



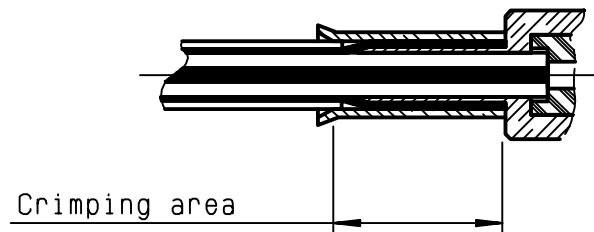
③

Fan the braid.  
Slide cable into the body until bottoms against insulator .  
Slide ferrule over the braid .  
(In direction F)



④

Crimp the ferrule with crimping tool R 282 223 000 ( Hex. : .213 ) or crimping tool M22520/5-01 ( R 282 293 000 ) + dies M22520/5-11 ( R 282 235 011 )  
Cut the excess of braid .  
Slide sleeve over ferrule in place .



# Mouser Electronics

Authorized Distributor

Click to View Pricing, Inventory, Delivery & Lifecycle Information:

[Radial:](#)

[R161083000](#)