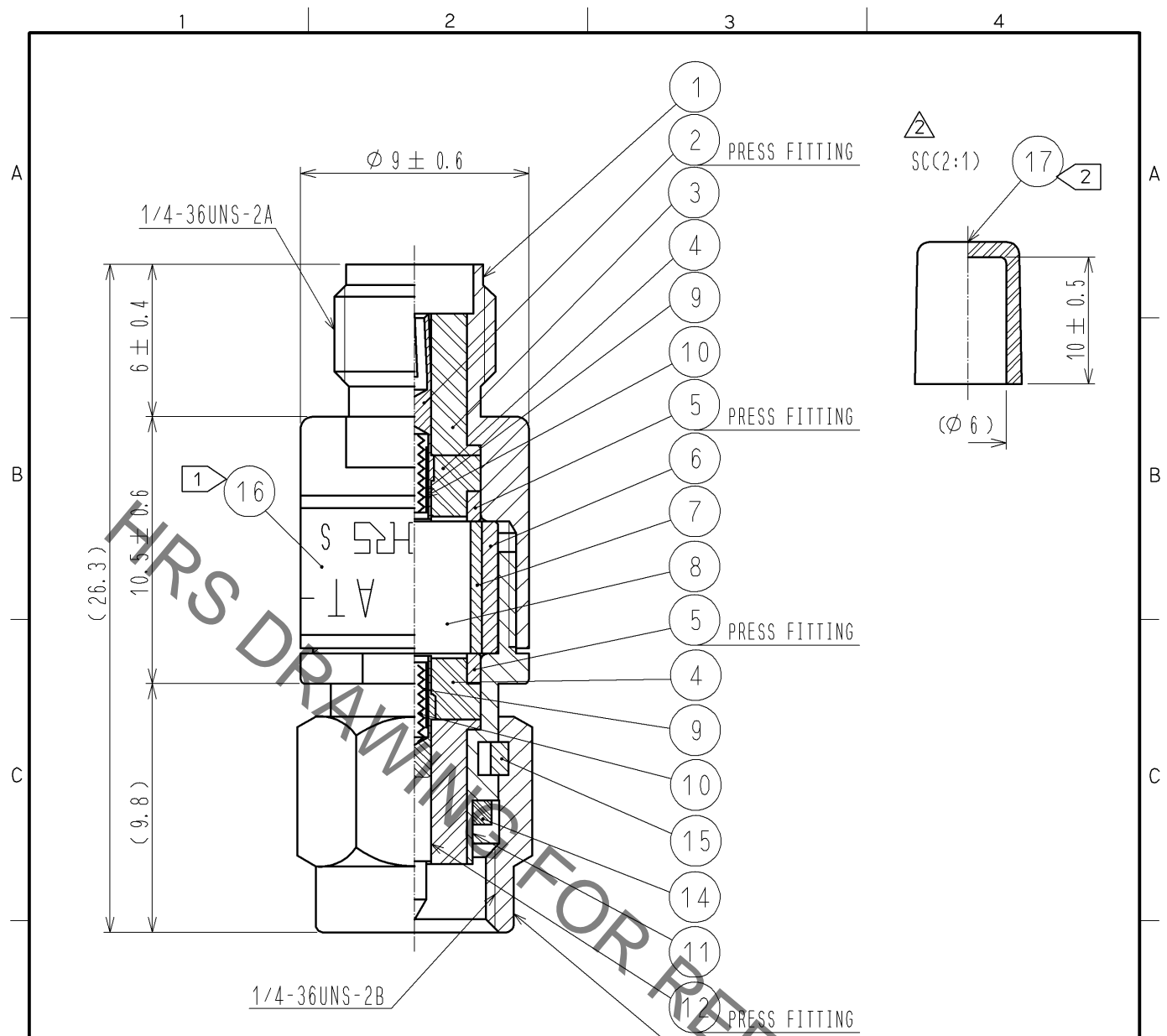


Aug.1.2021 Copyright 2021 HIROSE ELECTRIC CO., LTD. All Rights Reserved.  
 In case of consideration for using Automotive equipment / device which demand high reliability, kindly contact our sales window correspondents.



NOTE 1 INDICATION OF THE LABEL.  
 · AT - 120V  
 · 20dB  
 · HRS  
 · S. NO.

2 Ref no. 17 is delivered with being attached to ref no. 1.

9	BERYLLIUM COPPER	GOLD PLATING					
8	ALUMINA		17	STYRENIC-BASED ELASTOMERS	NATURAL		
7	BERYLLIUM COPPER	GOLD PLATING	16		LABEL		
6	BRASS	NICKEL PLATING	15	BERYLLIUM COPPER	NICKEL PLATING		
5	BRASS	NICKEL PLATING	14	SILICON RUBBER			
4	PTFE		13	STAINLESS STEEL	PASSIVATED		
3	PTFE		12	BERYLLIUM COPPER	GOLD PLATING		
2	BERYLLIUM COPPER	GOLD PLATING	11	STAINLESS STEEL	PASSIVATED		
1	STAINLESS STEEL	PASSIVATED	10	PIANO WIRE			
NO.	MATERIAL	FINISH	REMARKS	NO.	MATERIAL	FINISH	REMARKS

UNITS mm		SCALE 4 : 1	COUNT <span style="border: 1px solid black; padding: 2px;">2</span>	DESCRIPTION OF REVISIONS DIS-K-002989	DESIGNED TO. KATAYAMA	CHECKED KY. SHIMIZU	DATE 13. 07. 03
<b>HRS</b> HIROSE ELECTRIC CO., LTD. APPROVED : MT. SHIBUTANI 11. 07. 26 CHECKED : KY. SHIMIZU 11. 07. 26 DESIGNED : TO. KATAYAMA 11. 07. 26 DRAWN : TO. KATAYAMA 11. 07. 26				DRAWING NO. EDC4-181124-00 PART NO. AT-120V CODE NO. CL354-0274-2-00			

# Mouser Electronics

Authorized Distributor

Click to View Pricing, Inventory, Delivery & Lifecycle Information:

[Hirose Electric:](#)

[AT-120V](#)