

Data Sheet | Item Number: 281-611

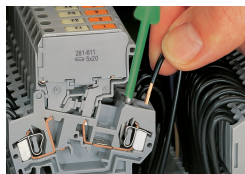
2-conductor fuse terminal block; with pivoting fuse holder; for 5 x 20 mm miniature metric fuse; without blown fuse indication; for DIN-rail 35 x 15 and 35 x 7.5; 4 mm²; CAGE CLAMP®; 4,00 mm²; gray

<https://www.wago.com/281-611>



Installation Notes

Conductor termination

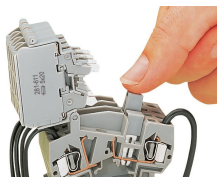


CAGE CLAMP® connection

Inserting a conductor.

With ferruled conductors, it is necessary to use a terminal block one size smaller than the conductor's nominal cross-section.

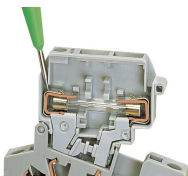
Commoning



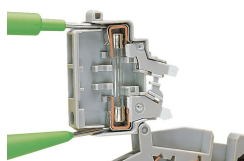
Commoning

Distributing current to several fuse-protected circuits via insulated push-in type jumpers.

Testing



Voltage test, either at input or output with fuse holder in closed position (live)



Through test with fuse holder in open position (no voltage)



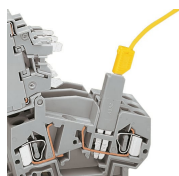
Voltage test at input in the test slot of the current bar



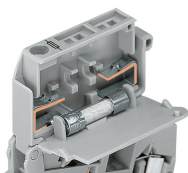
Testing voltage at the output via separate test slot.



Measuring current between jumper slot and separate test slot.



Testing voltage (input side) via test plug adapter (280-404, shown) or test plug (281-407).

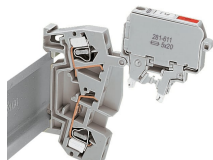


5 x 20 mm, 5 x 25 mm and 1/4" x 1" fuse holders are fitted with stops on the inside of the cover.

Security



Touch-proof protection in all positions of the fuse holder



Fuse holder will remain safely locked open in vertical assemblies.

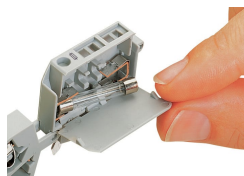
Locking system



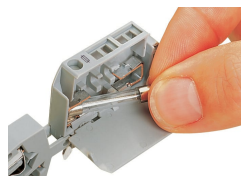
Ganging several fuse holders with an interlocking link (example shows 8 mm wide terminal blocks).



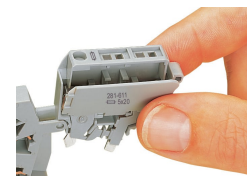
Fuse replacement: Before replacing a fuse, pivot the fuse holder into the locked open position.



Fuse replacement: One end of the fuse is automatically ejected from the holder when opening the cover.



Fuse replacement: Easily removing a fuse by hand.



Fuse replacement: Insert a new fuse and snap the cover closed.



Storing a spare fuse (fuse holder without blown fuse indication).

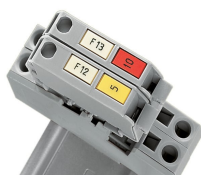


Fused disconnect or disconnect terminal blocks with a width of 8 mm can be assembled adjacently. At the end of an assembly, or if there is no adjacent fused disconnect or disconnect terminal block, an end or intermediate plate must be used.

Marking



All fuse holders are printed with correct fuse size.



Each fuse holder features two marker slots for custom WMB Multi markers (example shows 8 mm wide terminal blocks).