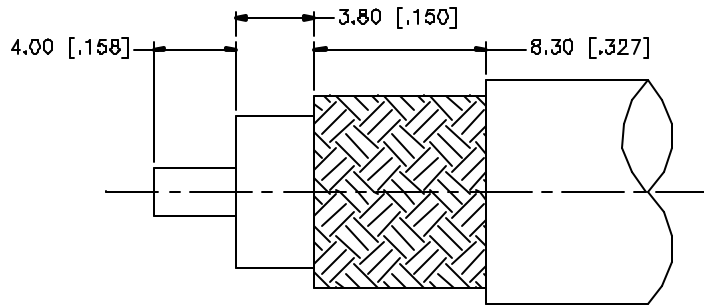
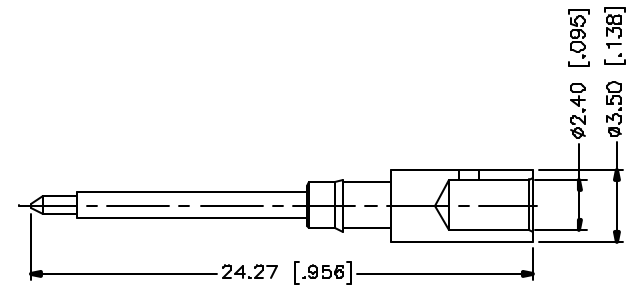
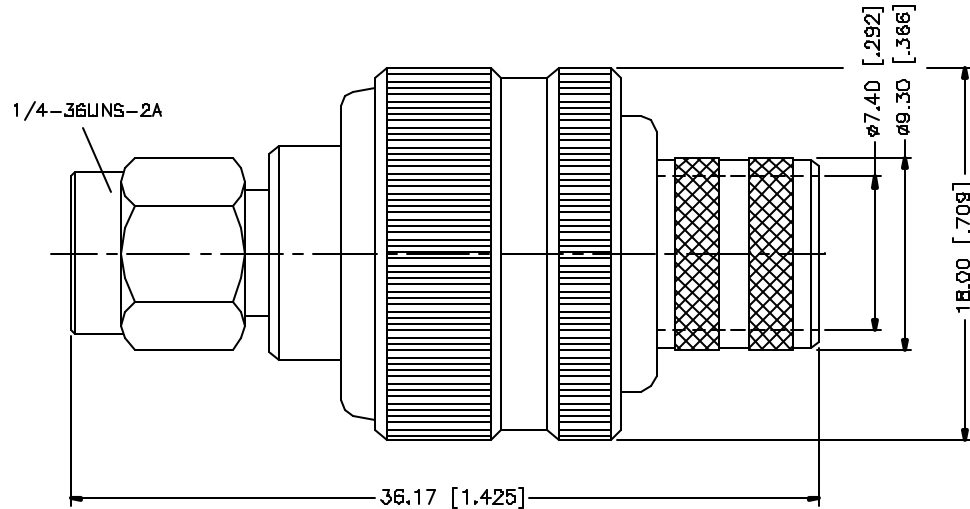


REV.	DATE	DESCRIPTION
NC	03/27/05	INITIAL RELEASE



RECOMMENDED
CABLE STRIPPING DIM'S



- NOTE:
1. CRIMPED FERRULE
HEX CRIMP SIZE .429"
 2. CRIMPED CONTACT PIN
HEX CRIMP SIZE .118"

REV.	DESCRIPTION	MATERIAL	FINISH	QTY	APPROVALS	DATE
8						
7						
6						
5						
4	FERRULE	COPPER	GOLD	1		
3	CONTACT PIN	BRASS	GOLD	1		
2	INSULATOR	TEFLON	NATURAL	1		
1	BDDY	BRASS	GOLD	1		
	DESCRIPTION	MATERIAL	FINISH	QTY		

UNLESS OTHERWISE SPECIFIED DIMENSIONS ARE IN MILLIMETERS DIMENSIONS IN [] ARE IN INCHES AND FOR CUSTOMER REFERENCE ONLY.

UNLESS OTHERWISE SPECIFIED TOLERANCES FOR MILLIMETERS ARE:
0.5 - 8mm ± 0.20mm
8 - 30mm ± 0.40mm
30 - 120mm ± 0.50mm

UNLESS OTHERWISE SPECIFIED TOLERANCES FOR INCHES ARE:
.020 - .315 = ± 0.007"
.315 - 1.180 = ± 0.015"
1.180 - 4.724 = ± 0.020"

DO NOT SCALE DRAWING

APPROVALS	DATE
DRAWN G.R.S.	03/27/05
CHECKED	
ISSUED	
SHEET 1 OF 1	
CAD FILE	C:/132/132369.DWG

Amphenol Connex

PART DESCRIPTION			
SMA CRIMP PLUG (FOR RG-214/U CABLE)			
PART NO.		132369	
DWG NO.	132369.DWG	REV. A	SCALE NA

Mouser Electronics

Authorized Distributor

Click to View Pricing, Inventory, Delivery & Lifecycle Information:

[Amphenol:](#)

[132369](#)