



CFM20 SERIES

20 WATT OPEN FRAME AC-DC MODULES



Features

- * Universal Input Range 85~264Vac
- * Efficiency to 81%
- * Industry Standard Pin Out
- * Meets EN55032 Class B
- * Continuous Short Circuit Protection
- * PCB Mountable Type is Available



MODEL	OUTPUT VOLTAGE	MAX. LOAD	MIN. LOAD	RIPPLE & NOISE NOTE 1	VOLTAGE ACCURACY NOTE 2	LINE REGULATION NOTE 3	LOAD REGULATION NOTE 4	% EFF. (Typ.) NOTE 5
CFM2001S	5 V	4400 mA	0 A	1%	±1%	±0.5%	±1%	72%
CFM2002S	12 V	1800 mA	0 A	1%	±1%	±0.5%	±1%	79%
CFM2003S	15 V	1400 mA	0 A	1%	±1%	±0.5%	±1%	80%
CFM2005S	24 V	920 mA	0 A	1%	±1%	±0.5%	±1%	81%
CFM2007S	3.3 V	4400 mA	0 A	50mV	±1%	±0.5%	±1%	66%
CFM2009S	9 V	2450 mA	0 A	1%	±1%	±0.5%	±1%	76%

Specifications are subject to change without notice.

Specifications

INPUT SPECIFICATIONS:

Voltage	85~264Vac
	120~370Vdc
Frequency	47 to 63Hz
Inrush Current	40A max. @230Vac
Conducted EMI	CISPR/FCC Class B
Leakage Current	3.5mA max.

OUTPUT SPECIFICATIONS:

Holdup Time	16ms typ. @115Vac
Short Circuit Protection	Hiccup Mode (Auto Recovery)
Over Voltage Protection	TVS Component to Clamp
Temperature Coefficient	±0.05%/°C max.

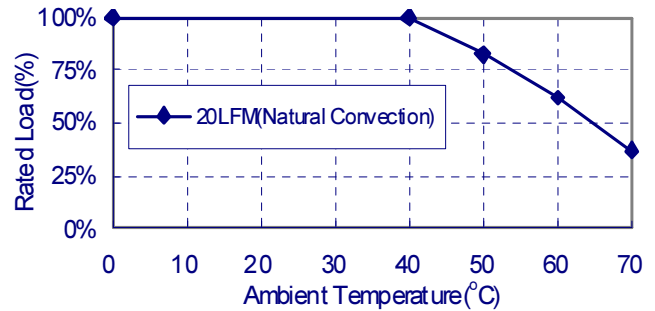
GENERAL SPECIFICATIONS:

Isolation	Input to output = 4,242VDC
Operating Temperature	0 ~ 70°C (See Derating Curve)
Storage Temperature	-20~85°C
Humidity	93% RH max. Non Condensing
Cooling	Natural Convection
Switching Frequency	67KHz Typical
MTBF	MIL-HDBK-217F, GB, 25°C/115VAC 300Khrs min.
Altitude	2000m
Dimensions	3.501x2.000x0.906Inches (88.92x50.80x23.00mm)
(CFM200XS-P)	3.501x2.000x1.000Inches (88.92x50.80x25.40mm)
Weight	100g (0.22 Pounds)

SAFETY AND EMC:

Emission and Immunity	EN55032 Class B
	EN61000-6-3, EN61000-3-2, EN61000-3-3
	EN55024, EN61204-3, EN61000-6-1
Safety	EN/IEC/UL 60950-1, EN/IEC/UL 62368-1

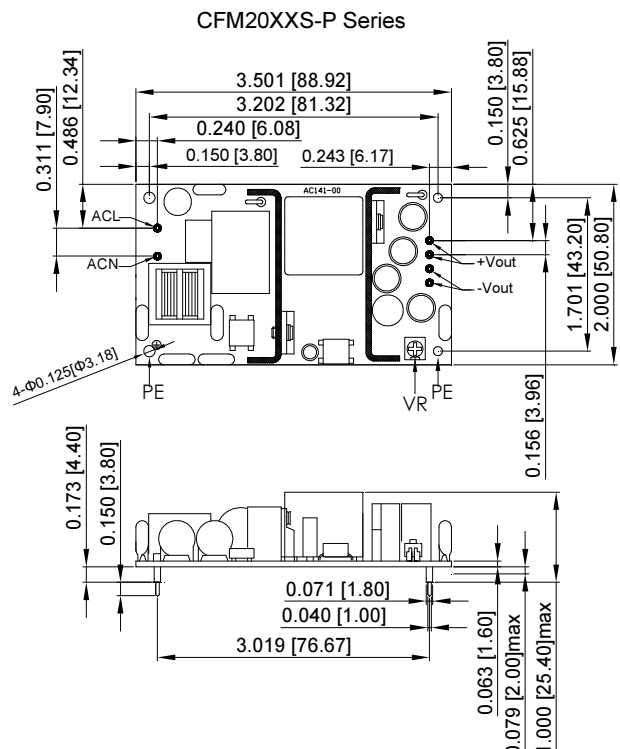
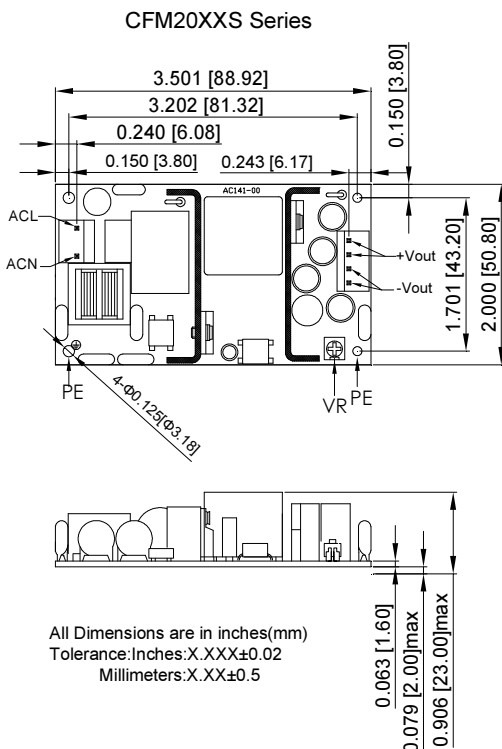
CFM20S Series Derating Curve



NOTE:

1. Add a 0.1uF ceramic capacitor and a 10uF E.L. capacitor to output for Ripple & Noise measuring @20MHz BW.
2. Voltage accuracy is set at 100% rated load and 25°C Ta.
3. Line regulation is measured from high line to low line with full load.
4. Load regulation is measured from full to 10% load.
5. Typical efficiency at 230VAC and full load at 25°C.
6. Standard input and output connectors wafer with LONG CHU P3060 series and mate with MOLEX housing 5195 series or equivalent.
7. Model "CFM200XS-P": Connectors with pcb mountable type.

Mechanical Specification



Typical at 25°C, nominal line and 75% load, unless otherwise Specified

Mouser Electronics

Authorized Distributor

Click to View Pricing, Inventory, Delivery & Lifecycle Information:

[Cincon:](#)

[CFM2007S](#) [CFM2001S](#) [CFM2002S](#) [CFM2003S](#) [CFM2005S](#) [CFM2009S](#) [CFM2009S-P](#) [CFM2007S-P](#) [CFM2002S-P](#) [CFM2001S-P](#) [CFM2003S-P](#) [CFM2005S-P](#)