

Supplementary instructions

Welded socket, threaded and hygienic adapter



Document ID: 48094



VEGA

Contents

1	Product description	4
2	Welded socket - universal	6
2.1	Thread	6
2.2	Clamp	9
2.3	Slotted nut acc. to DIN 11851	10
2.4	Slotted nut acc. to DIN 11864-1	11
2.5	Further hygienic fittings	12
3	Welded socket - VEGABAR series 80	15
3.1	Thread	15
3.2	Extension fitting - Paper industry	18
4	Welded socket – VEGASWING, VEGAVIB, VEGAKON, VEGAPOINT	21
4.1	VEGASWING 51, 61, 63	21
4.2	VEGAVIB 61, 63	22
4.3	VEGAKON 61	23
4.4	VEGAPOINT 10, 20, 30	24
5	Threaded adapter - VEGAPULS 10, 20, 30 series	26
5.1	Plastic adapter	26
6	Threaded adapter - VEGAPULS 64	28
6.1	Plastic adapter	28
6.2	Flanges according to EN 1092-1	29
6.3	Flanges according to ASME B16.5	31
6.4	Flanges according to EN 1092-1	32
7	Threaded adapter - VEGAPULS 64, VEGAFLEX 80 series	35
7.1	Clamp according to DIN 32676, ISO 2852	35
7.2	Slotted nut acc. to DIN 11851	37
7.3	Slotted nut acc. to DIN 11864-1	40
7.4	Further hygienic fittings	43
8	Threaded adapter - VEGABAR 80 series	45
8.1	Clamp according to DIN 32676, ISO 2852	45
8.2	Varivent	46
9	Threaded adapter - VEGACAP, VEGACAL, VEGAWAVE	48
9.1	VEGACAP 63/64, VEGACAL 63/64	48
9.2	VEGAWAVE	52
10	Hygienic adapter - VEGABAR 20, 30 series, VEGAPOINT 10, 20 series	56
10.1	Technical data, sealing concept	56
10.2	Direct welded socket	57
10.3	Clamp according to DIN 32676, ISO 2852	60
10.4	Slotted nut acc. to DIN 11851	62
10.5	Slotted nut acc. to DIN 11864-1	65
10.6	Further hygienic fittings	69
11	Hygienic adapter - VEGAPOINT 10, 20 series	75
11.1	Technical data, sealing concept	75
11.2	Direct welded socket	75

11.3	Clamp according to DIN 32676, ISO 2852	76
11.4	Slotted nut acc. to DIN 11851	77
11.5	Slotted nut acc. to DIN 11864-1	79
11.6	Further hygienic fittings	81
12	Hygiene adapter - VEGAPULS 10, 20, 30 series	85
12.1	Technical data, sealing concept	85
12.2	Clamp according to DIN 32676, ISO 2852	85
12.3	Slotted nut acc. to DIN 11851	86
13	Welding, mounting	87
13.1	Welding instructions	87
13.2	Mounting instructions threaded and hygienic adapter	88

1 Product description

Welded socket

Welded sockets are used for connection of sensors to the process.

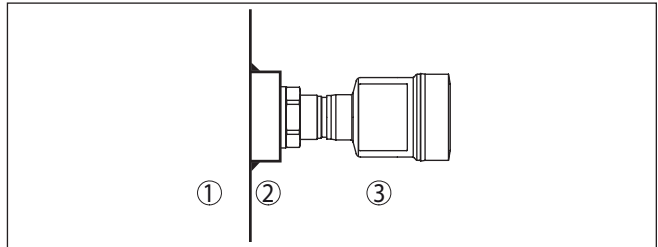


Fig. 1: Function of a welded socket

- 1 Vessel
- 2 Welded socket
- 3 Sensor

Adapter

Threaded adapters are used to adapt sensors with threaded connection to existing welded sockets.

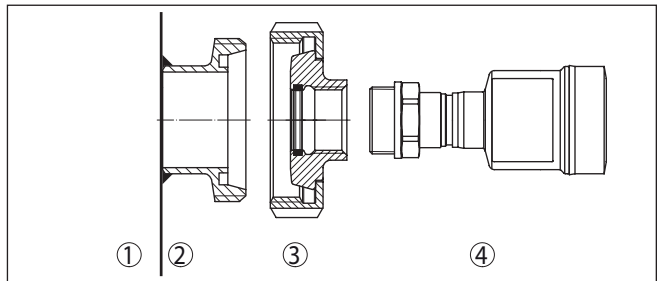


Fig. 2: Function, threaded adapter

- 1 Vessel
- 2 Welded socket
- 3 Adapter
- 4 Sensor

Hygienic adapter

Hygienic adapters are used to adapt sensors with threaded connection and cone or O-ring to existing hygienic welded sockets.

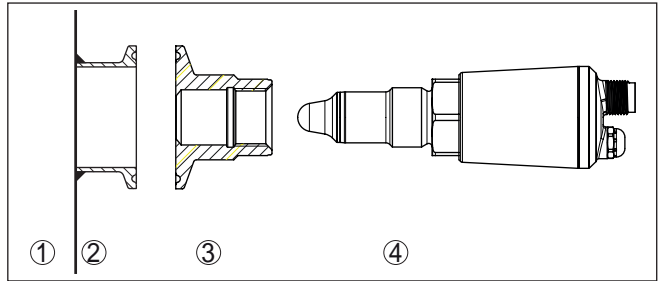


Fig. 3: Function hygienic adapter

- 1 Vessel
- 2 Welded socket
- 3 Hygienic adapter
- 4 Sensor

Process seal

A process seal is required to use the welded sockets or threaded adapters. Depending on the version, the process seal is included as an optional component in the scope of delivery of the welded socket or the sensor.

Pressure device directive

The welding sockets, threaded and hygienic adapters described here are not subject to the EU Pressure Equipment Directive if they are operated at process pressures ≤ 200 bar.

2 Welded socket - universal

2.1 Thread

Thread G $\frac{1}{2}$

Feature	Characteristic
Size	G $\frac{1}{2}$
Standard	DIN 3852-X
Pressure stage	PN 60
Material	316L
Product code/Art. no.	2.36839
Seal	Sensor side

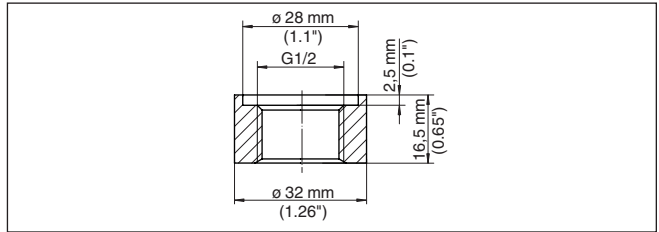


Fig. 4: Dimensions of welded socket, thread G $\frac{1}{2}$ (DIN 3852-X)

Thread G $\frac{3}{4}$

Feature	Characteristic
Size	G $\frac{3}{4}$
Standard	DIN 3852-X
Pressure stage	PN 60
Material	316L
Product code/Art. no.	2.36840
Seal	Sensor side

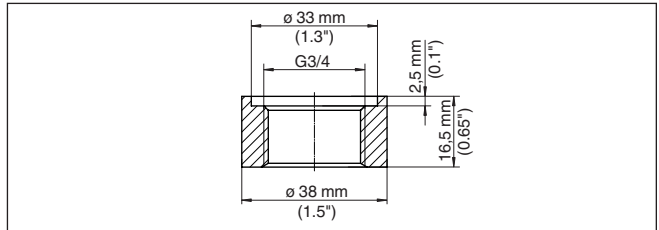


Fig. 5: Dimensions of welded socket, thread G $\frac{3}{4}$ (DIN 3852-X)

Thread G1

Feature	Characteristic
Size	G1

Feature	Characteristic
Standard	DIN 3852-X
Pressure stage	PN 60
Material	316L
Product code/Art. no.	2.36841
Seal	Sensor side

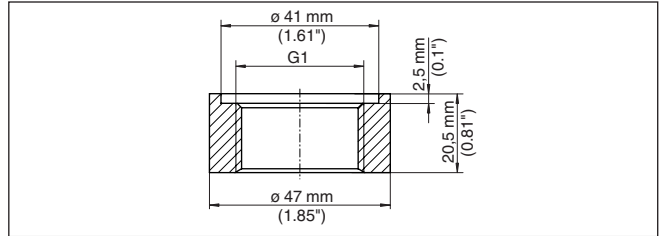


Fig. 6: Dimensions of welded socket, thread G1 (DIN 3852-X)

Thread G1½

Feature	Characteristic
Size	G1½
Standard	DIN 3852-X
Pressure stage	PN 60
Material	316L
Product code/Art. no.	2.36842
Seal	Sensor side

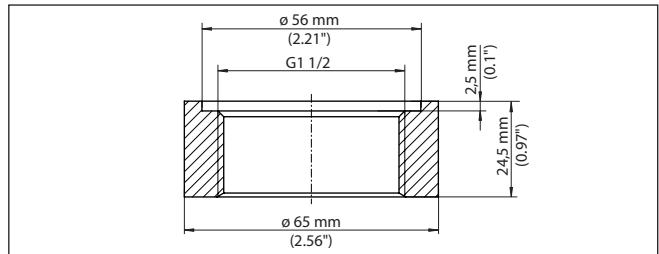


Fig. 7: Dimensions of welded socket, thread G1½ (DIN 3852-X)

Thread G¾ - Hygienic design

Part	Feature	Characteristic
Welded socket	Size	G¾
	Standard	ISO 228-1
	Material	316L
	Product code/Art. no.	ESMD.A1X

48094-EN-200804

Part	Feature	Characteristic
Seal	Material FKM	-30 ... +200 °C/-22 ... +392 °C
	Material EPDM	-40 ... +200 °C/-40 ... +392 °C
	Configuration	Seal ring acc. to DIN 3869
	Size	23.47 x 2.62 mm

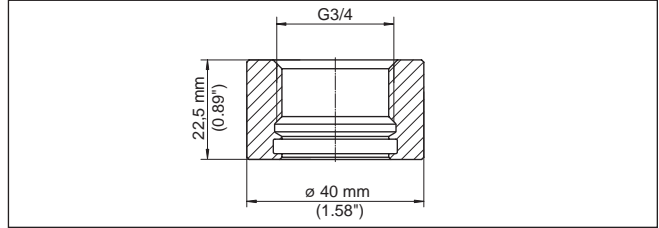


Fig. 8: Dimensions of welded socket, thread G $\frac{3}{4}$ (ISO 228-1) - Hygienic design

Thread G1½ - Hygienic design

Part	Feature	Characteristic
Welded socket	Size	G1½
	Standard	ISO 228-1
	Material	316L
	Product code/Art. no.	ESMD.B1X
Seal	Material FKM	-30 ... +200 °C/-22 ... +392 °C
	Material EPDM	-40 ... +200 °C/-40 ... +392 °C
	Material Kalrez 6375	-20 ... +150 °C/-4 ... +302 °C
	Configuration	Seal ring acc. to DIN 3869
	Size	42 x 3 mm
Welding dummy	Material	Brass
Blind plug	Material	316L

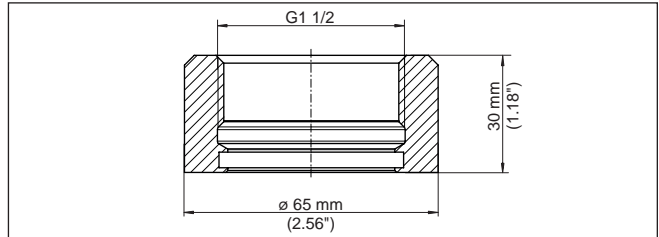


Fig. 9: Dimensions of welded socket, thread G1½ (ISO 228-1) - Hygienic design

2.2 Clamp

Clamp 1½"

Component	Feature	Characteristic
Welded socket	Size	1½"
	Standard	DIN 32676, ISO 2852
	Pressure stage	PN 16
	Material	316L
	Product code/Art. no.	ESTC.B3SX
Tension ring	Pressure stage	PN 16, PN 40
	Material	316L
Seal	Material	EPDM, FKM
	Configuration	Seal ring

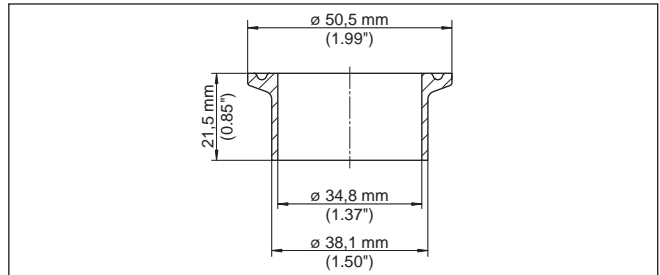


Fig. 10: Dimensions of welded socket, Clamp 1½" (DIN 32676, ISO 2852) PN 16

Clamp 2"

Component	Feature	Characteristic
Welded socket	Size	2"
	Standard	DIN 32676, ISO 2852
	Pressure stage	PN 16
	Material	316L
	Product code/Art. no.	ESTC.C3SX
Tension ring	Pressure stage	PN 16, PN 40
	Material	316L
Seal	Material	EPDM, FKM
	Configuration	Seal ring

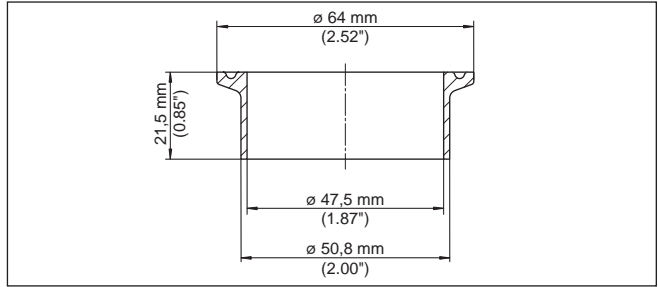


Fig. 11: Dimensions of welded socket, Clamp 2" (DIN 32676, ISO 2852) PN 16

2.3 Slotted nut acc. to DIN 11851

Slotted nut DN 40

Component	Feature	Characteristic
Welded socket	Size	DN 40
	Standard	DIN 11851
	Pressure stage	PN 40
	Material	316L
	Product code/Art. no.	ESTR.FA3X
Seal	Material	FKM, EPDM, NBR
	Configuration	Seal ring

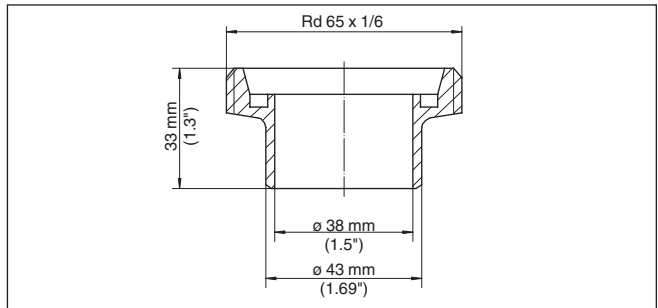


Fig. 12: Dimensions of welded socket, slotted nut DN 40 (DIN 11851)

Slotted nut DN 50

Component	Feature	Characteristic
Welded socket	Size	DN 50

Component	Feature	Characteristic
	Standard	DIN 11851
	Pressure stage	PN 25
	Material	316L
	Product code/Art. no.	ESTR.GA3X
Seal	Material	FKM, EPDM, NBR
	Configuration	Seal ring

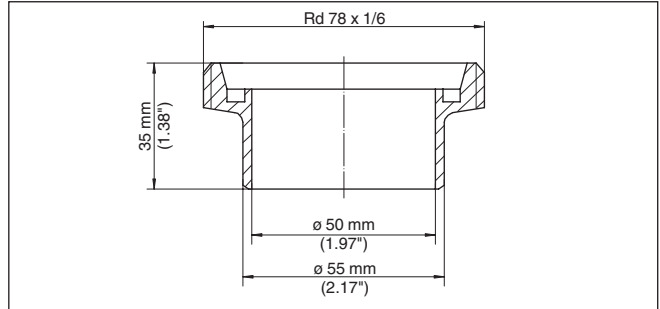


Fig. 13: Dimensions of welded socket, slotted nut DN 50 (DIN 11851)

2.4 Slotted nut acc. to DIN 11864-1

Slotted nut DN 40

Component	Feature	Characteristic
Welded socket	Size	DN 40
	Standard	DIN 11864-1
	Pressure stage	PN 25
	Material	316L
	Product code/Art. no.	ESTR.FBXX
Seal	From the user side	

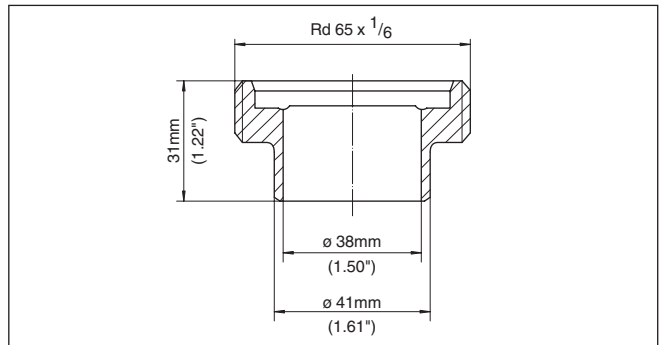


Fig. 14: Dimensions of welded socket, slotted nut DN 40 (DIN 11864-1)

Slotted nut DN 50

Component	Feature	Characteristic
Welded socket	Size	DN 50
	Standard	DIN 11864-1
	Pressure stage	PN 16
	Material	316L
	Product code/Art. no.	ESTR.GBXX
Seal	From the user side	

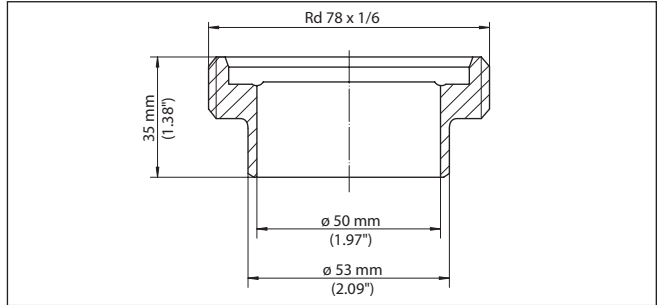


Fig. 15: Dimensions of welded socket, slotted nut DN 50 (DIN 11864-1)

2.5 Further hygienic fittings

Hygienic connection F40 with compression nut

Component	Feature	Characteristic
Welded socket	Size	Rd 65 x 1/6
	Standard	-
	Pressure stage	PN 25
	Material	316L
	Product code/Art. no.	ESTA.LA3XXX
Seal	Material	EPDM
	Configuration	O-ring
	Size	40 x 5 mm
Welding dummy	Material	Brass
Blind plug	Material	316L

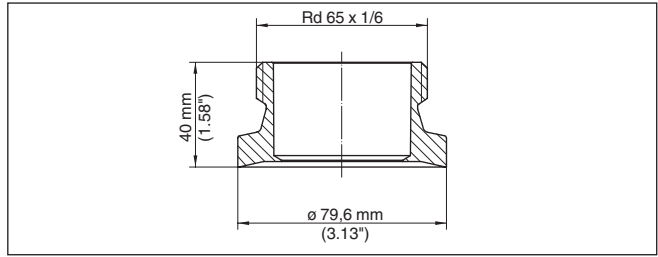


Fig. 16: Dimensions of welded socket, hygienic fitting F40 with compression nut

Hygienic fitting DN 32 with tension flange

Component	Feature	Characteristic
Welded socket	Size	ø 90
	Standard	-
	Pressure stage	PN 25
	Material	316L
	Product code/Art. no.	ESTA.LBXXX
Seal	Material	EPDM
	Configuration	O-ring
	Size	40 x 5 mm
Welding dummy	Material	Brass
Blind plug	Material	316L

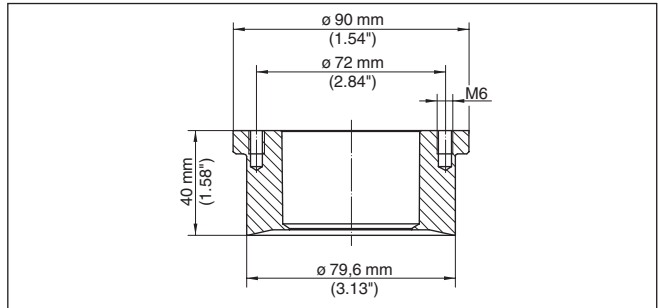


Fig. 17: Dimensions of welded socket, hygienic fitting DN 32 with tension flange

DRD connection

Component	Feature	Characteristic
Welded socket	Size	ø 105

Component	Feature	Characteristic
	Standard	-
	Pressure stage	PN 40
	Material	316L
	Product code/Art. no.	ESTD.AAXX
Seal	Material	PTFE
	Configuration	Flat seal
	Size	50 x 66 x 1 mm

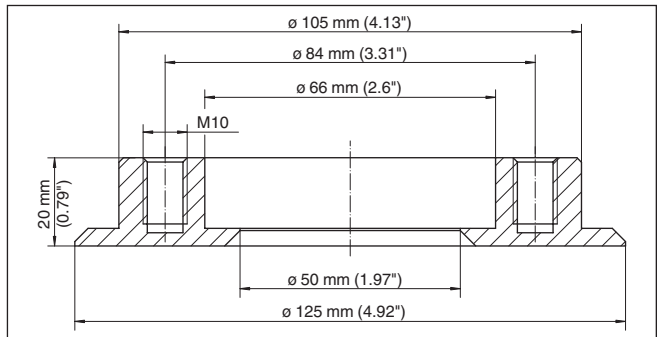


Fig. 18: Dimensions of welded socket, DRD

**Cone connection DN 25/
Rd52 x 2**

Component	Feature	Characteristic
Welded socket	Size	DN 25
	Standard	-
	Pressure stage	-
	Material	316Ti
	Product code/Art. no.	ESTK.KAXX
Seal	Material	EPDM
	Configuration	O-ring
	Size	30 x 3 mm

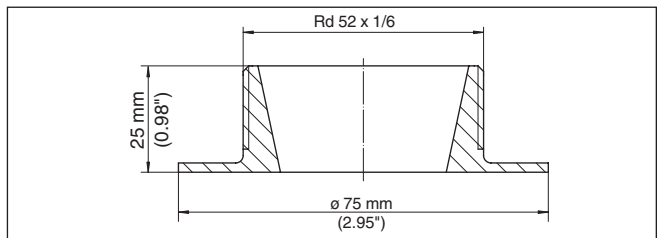


Fig. 19: Dimensions of welded socket, conus connection DN 25

3 Welded socket - VEGABAR series 80

3.1 Thread

Thread G $\frac{1}{2}$ - manometer connection

Part	Feature	Characteristic
Welded socket	Size	G $\frac{1}{2}$
	Standard	EN 837
	Material	316L
	Product code/Art. no.	WDSB80.DUXXXX
Seal	Material	Klingsil C-4400
	Configuration	Flat seal
	Size	21 x 30 x 2 mm
Welding dummy	Material	Brass
Blind plug	Material	316L

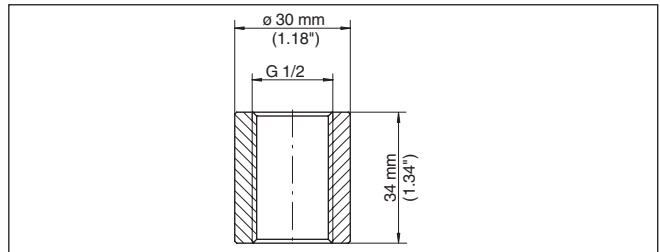
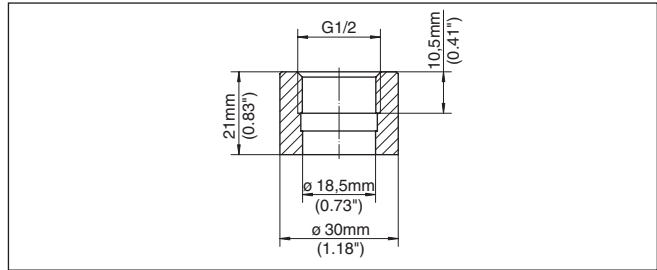


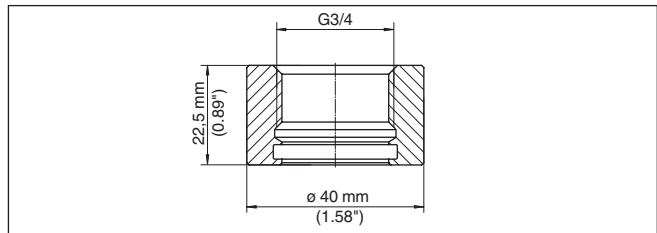
Fig. 20: Dimensions of welded socket, thread G $\frac{1}{2}$ (EN 837) - manometer connection - VEGABAR 81, 82, 83

Thread G $\frac{1}{2}$ - front-flush

Part	Feature	Characteristic
Welded socket	Size	G $\frac{1}{2}$
	Standard	ISO 228-1
	Material	316L
	Product code/Art. no.	WDSB80.C3XXXX
Seal	Material	FKM
	Configuration	Seal ring acc. to DIN 3869
	Size	18.5 x 23.9 x 1.5 mm
Welding dummy	Material	Brass
Blind plug	Material	316L

Fig. 21: Dimensions welded socket G $\frac{1}{2}$ (ISO 228-1), front-flush - VEGABAR 82**Thread G $\frac{3}{4}$**

Part	Feature	Characteristic
Welded socket	Size	G $\frac{3}{4}$
	Standard	DIN 3852-E
	Material	316L
	Product code/Art. no.	WDSB80.N9XXXX
Seal	Material	FKM, EPDM, FFKM, Klingersil C-4400
	Configuration	Seal ring acc. to DIN 3869
	Size	23.47 x 2.62 mm
Welding dummy	Material	Brass
Blind plug	Material	316L

Fig. 22: Dimensions of welded socket, G $\frac{3}{4}$ (DIN 3852-X) - VEGABAR 82**Thread G1**

Part	Feature	Characteristic
Welded socket	Size	G1
	Standard	ISO 228-1
	Material	316L
	Product code/Art. no.	WDSB80.C5XXXX
Seal	Material	Klingersil C-4400
	Configuration	Flat seal
	Size	33 x 39 x 2 mm

Part	Feature	Characteristic
Welding dummy	Material	Brass
Blind plug	Material	316L

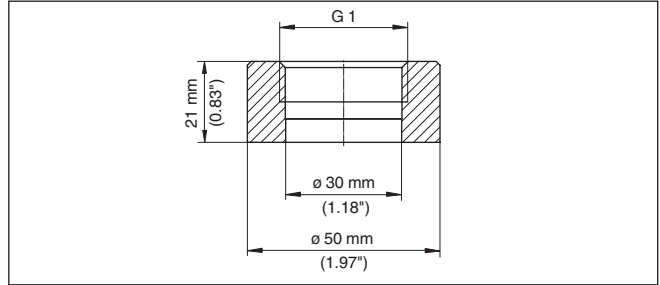


Fig. 23: Dimensions of welded socket, G1 (ISO 228-1) - VEGABAR 82, 83

Thread G1½

Part	Feature	Characteristic
Welded socket	Size	G1½
	Standard	DIN 3852-A
	Material	316L
	Product code/Art. no.	WDSB80.DAXXXX
Seal	Material	Klingsil C-4400
	Configuration	Flat seal
	Size	48 x 55 x 2 mm
Welding dummy	Material	Brass
Blind plug	Material	316L

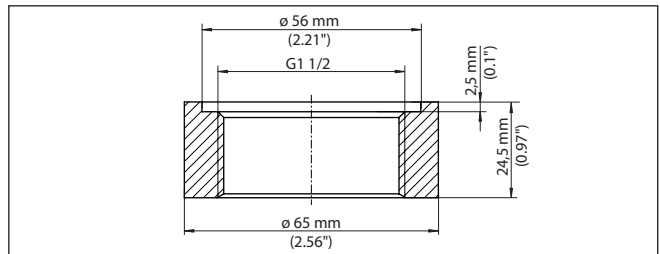


Fig. 24: Dimensions of welded socket, thread G1½ (EN 837) - VEGABAR 82, 83, 86, 87

3.2 Extension fitting - Paper industry

M30 x 1.5

Part	Feature	Characteristic
Welded socket	Size	M30 x 1.5
	Standard	DIN 13
	Material	316L
	Product code/Art. no.	WDSB80.ALXXXX (completely front-flush) WDSB80.APXXXX (for headbox)
Seal	Material	FKM, EPDM, FFKM
	Configuration	Seal ring
	Size	20.35 x 1.78 mm
Welding dummy	Material	Brass
Blind plug	Material	316L

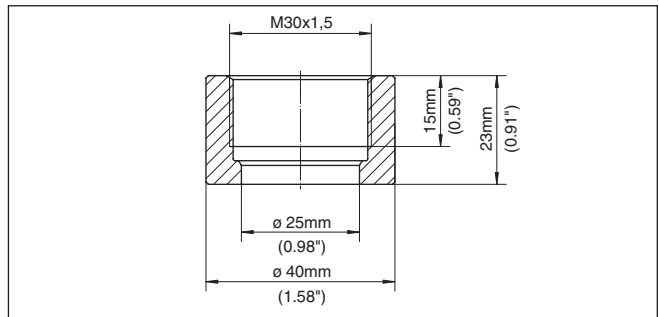


Fig. 25: Dimensions of welded socket, M30 x 1.5 - VEGABAR 82

M44 x 1.25

Part	Feature	Characteristic
Welded socket	Size	M44 x 1.25
	Standard	DIN 13
	Material, process fitting	316L, Alloy C22
	Material, pressure screw	Aluminium, 316L
	Product code/Art. no.	WDSB80.AFXXXX
Seal	Material	FKM, EPDM, FFKM
	Configuration	Seal ring
	Size	40 x 2 mm
Welding dummy	Material	Brass
Blind plug	Material	316L

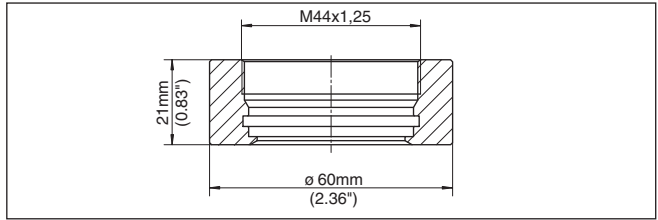


Fig. 26: Dimensions of welded socket, M44 x 1.25 - VEGABAR 82, 83

G1 suitable for PASVE

Data - Version with metallic seal:

Part	Feature	Characteristic
Welded socket	Size	G1
	Standard	ISO 228-1
	Material	316L
	Product code/Art. no.	WDSB80.XXXXXX
Welding dummy	Material	Brass
Blind plug	Material	316L

Additional data - Version with O-ring seal:

Part	Feature	Characteristic
Seal	Material	FKM, EPDM, FFKM
	Configuration	Seal ring
	Size	18.77 x 1.78 mm

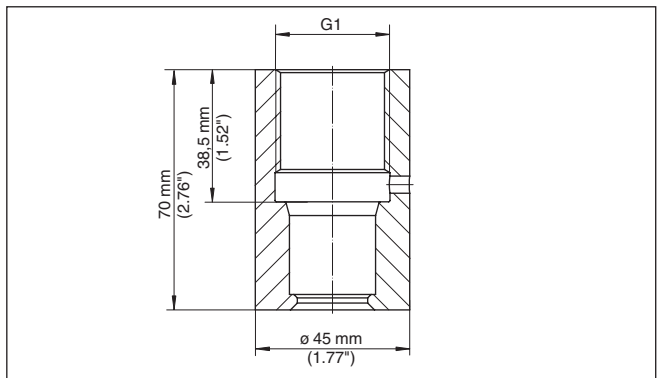


Fig. 27: Dimensions welded socket G1 suitable for PASVE (for the two previously listed versions) - VEGABAR 82

PMC 1"

Part	Feature	Characteristic
Welded socket	Size	1"
	Standard	-
	Material	316L
	Product code/Art. no.	WDSB80.EMW1XX
Seal	Material	FKM, EPDM, FFKM, PTFE
	Size	ø 20.22 x 3.53 mm
Welding dummy	Material	Brass

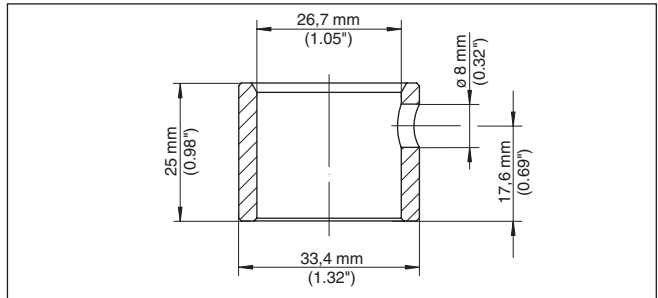


Fig. 28: Dimensions of welded socket, PMC 1" VEGABAR 82

4 Welded socket – VEGASWING, VEGAVIB, VEGAKON, VEGAPOINT

4.1 VEGASWING 51, 61, 63

Thread G $\frac{3}{4}$

Part	Feature	Characteristic
Welded socket	Size	G $\frac{3}{4}$
	Standard	DIN 3852-X
	Pressure stage	PN 60
	Material	316L
	Product code/Art. no.	ESTSG.1GBXX
Seal	Material	FKM, EPDM, FFKM Perlast G75B 78
	Configuration	O-ring
	Size	21 x 3 mm

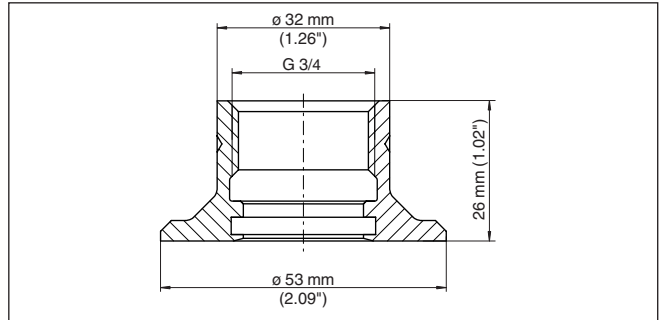


Fig. 29: Dimensions of welded socket, G $\frac{3}{4}$ (DIN 3852-X)

Thread G1

Part	Feature	Characteristic
Welded socket	Size	G1
	Standard	DIN 3852-X
	Pressure stage	PN 60
	Material	316L
	Product code/Art. no.	ESTSG.1GAXX
Seal	Material	FKM, EPDM
	Configuration	O-ring
	Size	21 x 3 mm

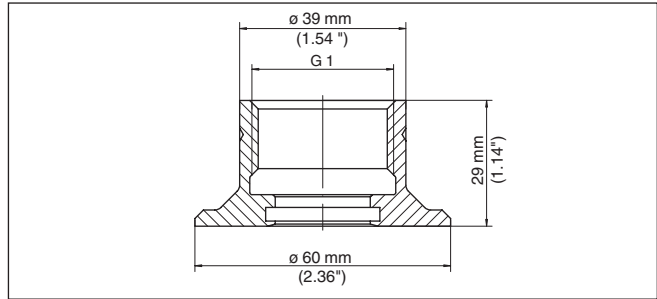


Fig. 30: Dimensions of welded socket, G1 (DIN 3852-X)

4.2 VEGAVIB 61, 63

Thread G1

Part	Feature	Characteristic
Welded socket	Size	G1
	Standard	DIN 3852-A
	Pressure stage	PN 16
	Material	316L
	Product code/Art. no.	ESTVB.GCRXX
Seal	Material	EPDM 70 Shore A, FDA approved
	Configuration	O-ring
	Size	28 x 3.5 mm

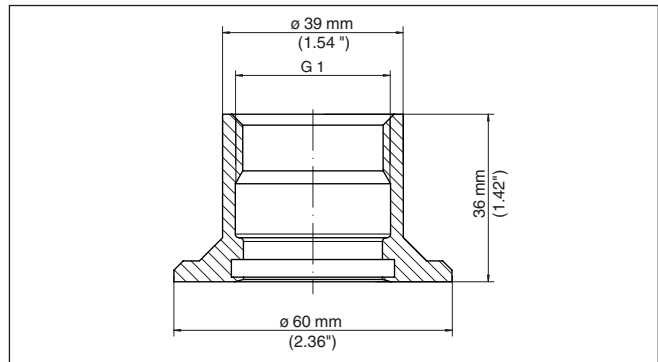


Fig. 31: Dimensions of welded socket, G1 (DIN 3852-A)

Thread G1½

Part	Feature	Characteristic
Welded socket	Size	G1½
	Standard	DIN 3852-A
	Pressure stage	PN 16
	Material	316L
	Product code/Art. no.	ESTVB.GDUXX
Seal	Material	EPDM 70 Shore A, FDA approved
	Configuration	O-ring
	Size	28 x 3.5 mm

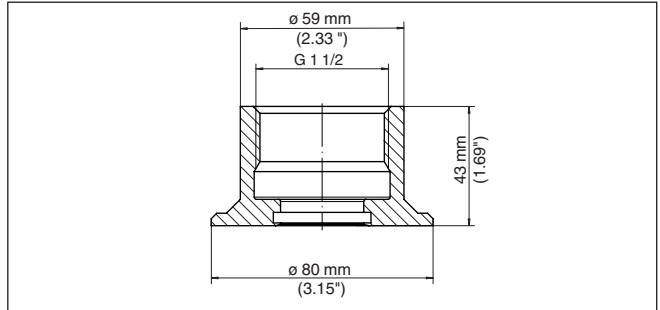


Fig. 32: Dimensions of welded socket, G1½ (DIN 3852-A)

4.3 VEGAKON 61

Thread G1

Feature	Characteristic
Size	G1
Standard	DIN 3852-X
Pressure stage	PN 25
Material	316Ti
Product code/Art. no.	ESTKN.1GA
Seal	Klingersil C-4400 33 x 39 x 2 mm

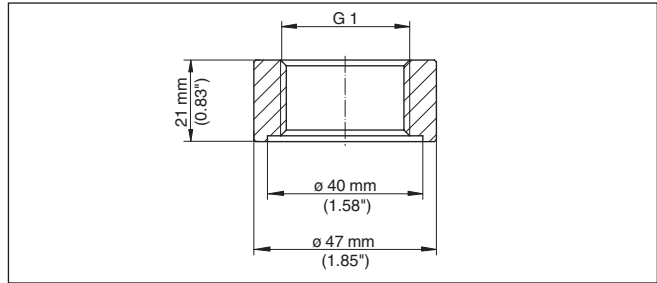


Fig. 33: Dimensions of welded socket, G1 (DIN 3852-X)

Thread G1 - suitable for foodstuffs

Feature	Characteristic
Size	G1
Standard	DIN 3852-X
Pressure stage	PN 25
Material	316Ti
Product code/Art. no.	ESTKN.1GL
Seal	EPDM 70 Shore A, FDA approved 28 x 3.5 mm

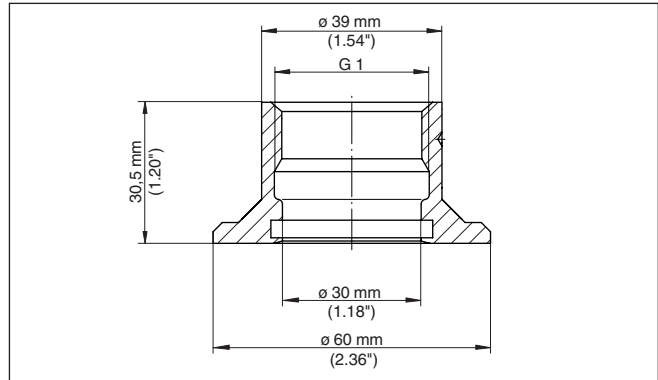


Fig. 34: Dimensions of welded socket, G1 (DIN 3852-X) - suitable for foodstuffs

4.4 VEGAPOINT 10, 20, 30

Thread G $\frac{1}{2}$ - L = 15 mm

Feature	Characteristic
Size	G1
Standard	DIN 3852-A
Pressure stage	PN 25
Material	316L

Feature	Characteristic
Product code/Art. no.	ESTVP.1ABXXX
Seal	FKM, EPDM

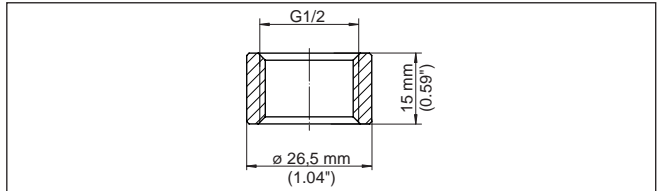


Fig. 35: Dimensions welded socket G1 (DIN 3852-A) - L = 15 mm

Thread G $\frac{1}{2}$ - L = 25 mm

Feature	Characteristic
Size	G1
Standard	DIN 3852-A
Pressure stage	PN 25
Material	316L
Product code/Art. no.	ESTVP.1AAXXX
Seal	FKM, EPDM

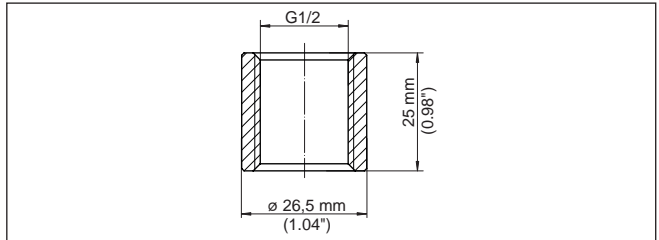


Fig. 36: Dimensions welded socket G1 (DIN 3852-A) - L = 25 mm

5 Threaded adapter - VEGAPULS 10, 20, 30 series

5.1 Plastic adapter

Thread G1½ - Thread G2

Part	Feature	Characteristic
Adapter	Size, sensor side	G1½
	Size, process side	G2
	Standard	DIN 3852-X
	Material	PP
	Pressure stage	unpressurized 0.2 bar
	Process temperature	-40 ... +80 °C (-40 ... +176 °F)
	Max. torque	5 Nm (3.688 lbf ft)
	Product code/Art. no.	GEWADA-G.G
	Seal	Material
Configuration		Flat seal
Size		ø 68 x 59 x 2.5 mm

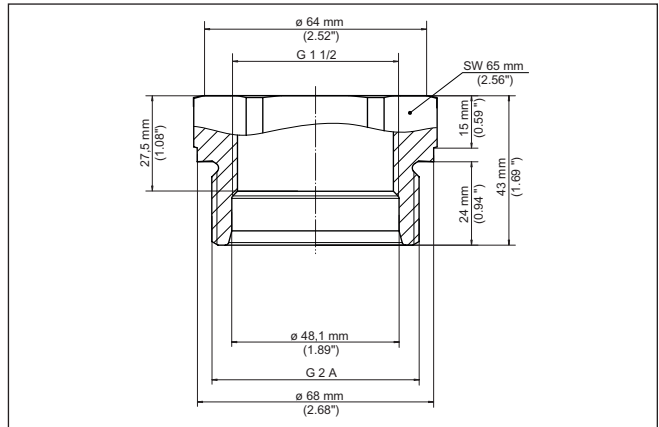


Fig. 37: Dimensions of threaded adapter G1½ (DIN 3852-X) on thread G2 (DIN 3852-X)

Thread 1½"NPT - Thread 2"NPT

Part	Feature	Characteristic
Adapter	Size, sensor side	1½"NPT
	Size, process side	2"NPT
	Material	PP
	Pressure stage	unpressurized 0.2 bar
	Process temperature	-40 ... +80 °C (-40 ... +176 °F)
	Max. torque	5 Nm (3.688 lbf ft)
	Product code/Art. no.	GEWADA-G.N

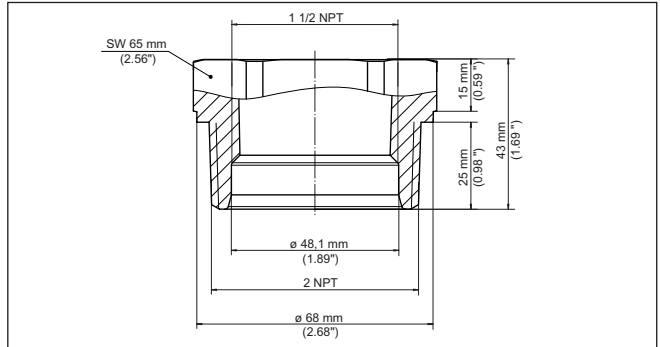


Fig. 38: Dimensions, threaded adapter 1½"NPT on thread 2"NPT

6 Threaded adapter - VEGAPULS 64

6.1 Plastic adapter

Thread G1½ - Thread
G1½

Part	Feature	Characteristic
Adapter	Size, sensor side	G1½
	Size, process side	G1½
	Standard	DIN 3852-X
	Material	PTFE
	Pressure stage	unpressurized 0.2 bar
	Process temperature	-40 ... +130 °C (-40 ... +266 °F)
	Max. torque	5 Nm (3.688 lbf ft)
	Product code/Art. no.	GEWADA-F.TC4T1
Seal, sensor side	Material	FKM SHS FPM 70C3 GLT
	Configuration	O-ring seal
	Size	48 x 2 mm
Seal, process side	Material	FKM SHS FPM 70C3 GLT
	Configuration	Flat seal
	Size	ø 58 x 47 x 2 mm

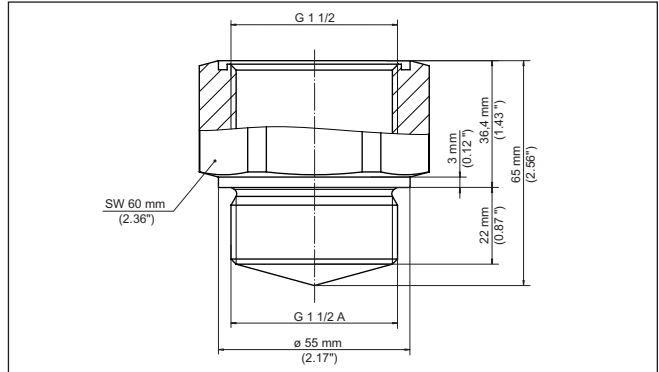


Fig. 39: Dimensions of threaded adapter G1½ (DIN 3852-X) on thread G1½, G2 (DIN 3852-X)

Thread G1½ on thread G2

Part	Feature	Characteristic
Adapter	Size, sensor side	G1½
	Size, process side	G2
	Standard	DIN 3852-X
	Material	PTFE
	Pressure stage	unpressurized 0.2 bar
	Process temperature	-40 ... +130 °C (-40 ... +266 °F)
	Max. torque	5 Nm (3.688 lbf ft)
	Product code/Art. no.	GEWADA-F.TC4T3
Seal, sensor side	Material	FKM SHS FPM 70C3 GLT
	Configuration	O-ring seal
	Size	48 x 2 mm
Seal, process side	Material	FKM SHS FPM 70C3 GLT
	Configuration	Flat seal
	Size	ø 68 x 59 x 2.5 mm

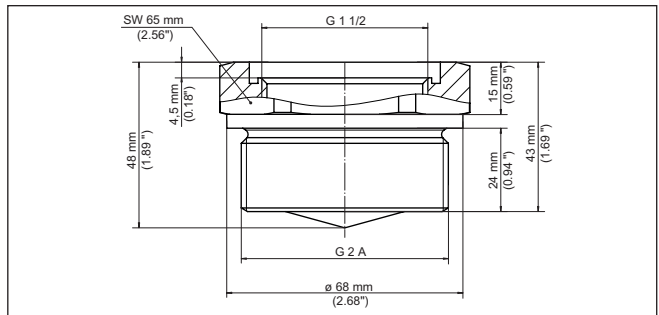


Fig. 40: Dimensions of threaded adapter G1½ (DIN 3852-X) on thread G2 (DIN 3852-X)

6.2 Flanges according to EN 1092-1

Thread G¾ - Flange DN 40 - Form B1

Part	Feature	Characteristic
Adapter	Size, sensor side	G¾
	Standard	DIN 3852-X
	Size, process side	DN 40
	Standard	EN 1092-1, Form B1
	Pressure stage	PN 40
	Material	316L
	Product code/Art. no.	GEWADA-F.TA1AC

48094-EN-200804

Part	Feature	Characteristic
Seal	Material FKM SHS FPM 70C3 GLT	-40 ... +200 °C/-40 ... +392 °F
	Material EPDM A+P 70.10-02	-40 ... +130 °C/-40 ... +266 °F
	Material FFKM Kalrez 6375	-40 ... +200 °C/-40 ... +392 °F
	Configuration	Seal ring
	Size	23.47 x 2.62 mm

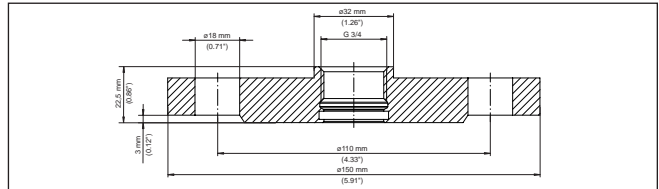


Fig. 41: Dimensions of threaded adapter $G\frac{3}{4}$ (DIN 3852-X) on flange DN 40 (EN 1092-1, Form B1) PN 40

$G1\frac{1}{2}$ - Flange DN 40 - Form B1

Part	Feature	Characteristic
Adapter	Size, sensor side	$G1\frac{1}{2}$
	Standard	DIN 3852-X
	Size, process side	DN 40
	Standard	EN 1092-1, Form B1
	Pressure stage	PN 40
	Material	316L
	Product code/Art. no.	GEWADA-F.TC1AC
Seal	Material FKM SHS FPM 70C3 GLT	-40 ... +200 °C/-40 ... +392 °F
	Material EPDM A+P 70.10-02	-40 ... +130 °C/-40 ... +266 °F
	Material FFKM Kalrez 6375	-40 ... +200 °C/-40 ... +392 °F
	Configuration	Seal ring
	Size	42 x 3 mm

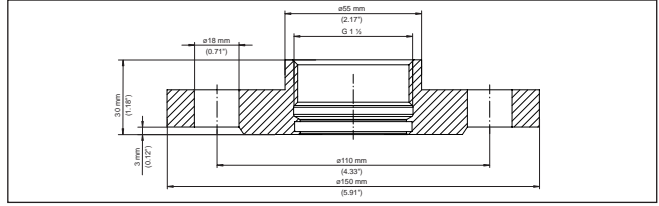


Fig. 42: Dimensions of threaded adapter G1½ (DIN 3852-X) on flange DN 40 (EN 1092-1, Form B1) PN 40

6.3 Flanges according to ASME B16.5

Thread G¾ on flange
1½" - RF

Part	Feature	Characteristic
Adapter	Size, sensor side	G¾
	Standard	DIN 3852-X
	Size, process side	1½"
	Standard	ASME B16.5, RF
	Pressure stage	150 lb
	Material	316L
	Product code/Art. no.	GEWADA-F.TA1AH
Seal	Material FKM SHS FPM 70C3 GLT	-40 ... +200 °C/-40 ... +392 °F
	Material EPDM A+P 70.10-02	-40 ... +130 °C/-40 ... +266 °F
	Material FFKM Kalrez 6375	-40 ... +200 °C/-40 ... +392 °F
	Configuration	Seal ring
	Size	23.47 x 2.62 mm

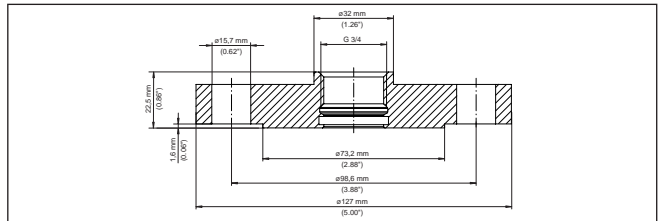


Fig. 43: Dimensions of threaded adapter G¾ (DIN 3852-X) on flange 1½" (ASME B16.5, RF) 150 lb

Thread G1½ on flange 1½" - RF

Part	Feature	Characteristic
Adapter	Size, sensor side	G1½
	Standard	DIN 3852-X
	Size, process side	1½"
	Standard	ASME B16.5, RF
	Pressure stage	150 lb
	Material	316L
	Product code/Art. no.	GEWADA-F.TC1AH
Seal	Material FKM SHS FPM 70C3 GLT	-40 ... +200 °C/-40 ... +392 °F
	Material EPDM A+P 70.10-02	-40 ... +130 °C/-40 ... +266 °F
	Material FFKM Kalrez 6375	-40 ... +200 °C/-40 ... +392 °F
	Configuration	Seal ring
	Size	42 x 3 mm

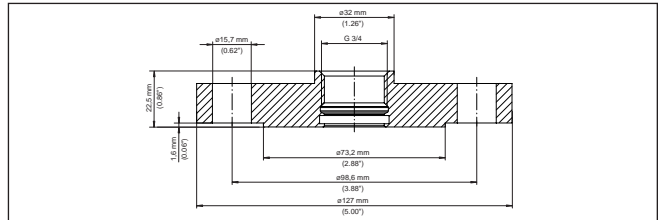


Fig. 44: Dimensions of threaded adapter G¾ (DIN 3852-X) on flange 1½" (ASME B16.5, RF) 150 lb

6.4 Flanges according to EN 1092-1

Thread G¾ on flange DN 40 - Form B1

Part	Feature	Characteristic
Adapter	Size, sensor side	G¾
	Standard	DIN 3852-X
	Size, process side	DN 40
	Standard	EN 1092-1, Form B1
	Pressure stage	PN 40
	Material	316L
	Product code/Art. no.	GEWADA-F.TA1AC

Part	Feature	Characteristic
Seal	Material FKM SHS FPM 70C3 GLT	-40 ... +200 °C/-40 ... +392 °F
	Material EPDM A+P 70.10-02	-40 ... +130 °C/-40 ... +266 °F
	Material FFKM Kalrez 6375	-40 ... +200 °C/-40 ... +392 °F
	Configuration	Seal ring
	Size	23.47 x 2.62 mm

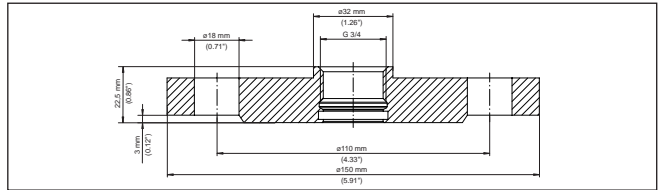


Fig. 45: Dimensions of threaded adapter G $\frac{3}{4}$ (DIN 3852-X) on flange DN 40 (EN 1092-1, Form B1) PN 40

**Thread G1½ on flange
DN 40 - Form B1**

Part	Feature	Characteristic
Adapter	Size, sensor side	G1½
	Standard	DIN 3852-X
	Size, process side	DN 40
	Standard	EN 1092-1, Form B1
	Pressure stage	PN 40
	Material	316L
	Product code/Art. no.	GEWADA-F.TC1AC
Seal	Material FKM SHS FPM 70C3 GLT	-40 ... +200 °C/-40 ... +392 °F
	Material EPDM A+P 70.10-02	-40 ... +130 °C/-40 ... +266 °F
	Material FFKM Kalrez 6375	-40 ... +200 °C/-40 ... +392 °F
	Configuration	Seal ring
	Size	42 x 3 mm

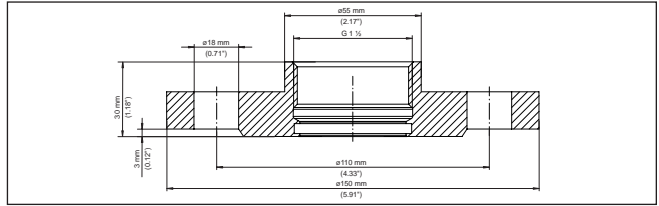


Fig. 46: Dimensions of threaded adapter G1½ (DIN 3852-X) on flange DN 40 (EN 1092-1, Form B1) PN 40

7 Threaded adapter - VEGAPULS 64, VEGAFLEX 80 series

7.1 Clamp according to DIN 32676, ISO 2852

G $\frac{3}{4}$ - Clamp 1 $\frac{1}{2}$ "

Part	Feature	Characteristic
Adapter	Size, sensor side	G $\frac{3}{4}$
	Standard	DIN 3852-X
	Size, process side	Clamp 1 $\frac{1}{2}$ "
	Standard	DIN 32676, ISO 2852
	Pressure stage	PN 16
	Material	316L
	Product code/Art. no.	GEWADA-A.CG3
Seal	Material EPDM	-40 ... 150 °C/-40 ... 302 °F
	Material Viton	-30 ... 200 °C/-22 ... 392 °F
	Material FFKM Kalrez 6375	-20 ... 200 °C/-4 ... 392 °F
	Material FFKM Perlast G75S FDA+3A	-15 ... 200 °C/-5 ... 392 °F
	Configuration	O-ring seal
	Size	23.47 x 2.62 mm

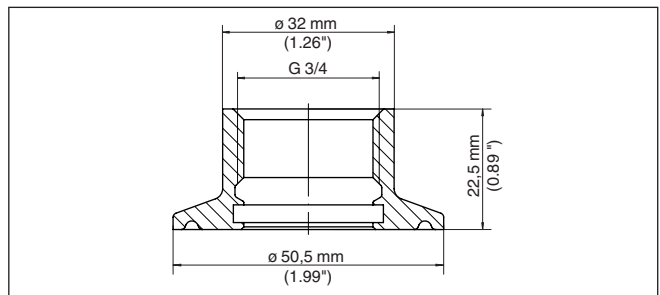


Fig. 47: Dimensions of threaded adapter G $\frac{3}{4}$ (DIN 3852-X) on Clamp 1 $\frac{1}{2}$ " (DIN 32676, ISO 2852) PN 16

G $\frac{3}{4}$ - Clamp 2"**Data:**

Part	Feature	Characteristic
Adapter	Size, sensor side	G $\frac{3}{4}$
	Standard	DIN 3852-X
	Size, process side	Clamp 2"
	Standard	DIN 32676, ISO 2852
	Pressure stage	PN 16
	Material	316L
	Product code/Art. no.	GEWADA-A.CA3
Seal	Material EPDM	-40 ... 150 °C/-40 ... 302 °F
	Material Viton	-30 ... 200 °C/-22 ... 392 °F
	Material FFKM Kalrez 6375	-20 ... 200 °C/-4 ... 392 °F
	Material FFKM Perlast G75S FDA+3A	-15 ... 200 °C/-5 ... 392 °F
	Configuration	O-ring seal
	Size	23.47 x 2.62 mm

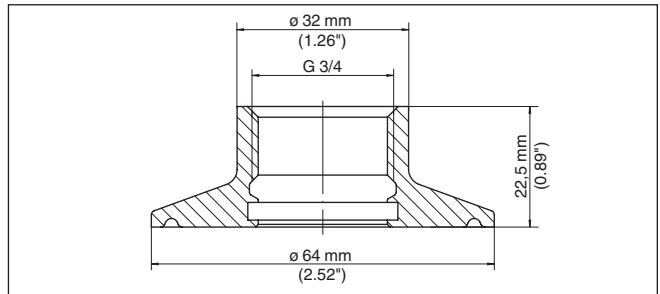


Fig. 48: Dimensions of threaded adapter G $\frac{3}{4}$ (DIN 3852-X) on Clamp 2" (DIN 32676, ISO 2852) PN 16

G1 $\frac{1}{2}$ - Clamp 2"**Data:**

Part	Feature	Characteristic
Adapter	Size, sensor side	G1 $\frac{1}{2}$
	Standard	DIN 3852-X
	Size, process side	Clamp 2"
	Standard	DIN 32676, ISO 2852
	Pressure stage	PN 16
	Material	316L
	Product code/Art. no.	GEWADA-B.CA3

Part	Feature	Characteristic
Seal	Material EPDM FDA	-40 ... 150 °C/-40 ... 302 °F
	Material FKM Vi 780 FDA	-30 ... 200 °C/-22 ... 392 °F
	Configuration	O-ring seal
	Size	42 x 3 mm

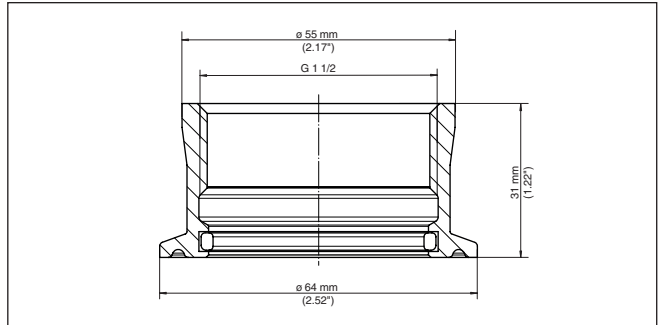


Fig. 49: Dimensions of threaded adapter G1½ (DIN 3852-X) on Clamp 2" (DIN 32676, ISO 2852) PN 16

7.2 Slotted nut acc. to DIN 11851

G¾ - Slotted nut DN 40

Part	Feature	Characteristic
Adapter	Size, sensor side	G¾
	Standard	DIN 3852-X
	Size, process side	DN 40
	Standard	DIN 11851
	Pressure stage	PN 16
	Material	316L
	Product code/Art. no.	GEWADA-A.RA3
Seal	Material EPDM	-40 ... 150 °C/-40 ... 302 °F
	Material Viton	-30 ... 200 °C/-22 ... 392 °F
	Material FFKM Kalrez 6375	-20 ... 200 °C/-4 ... 392 °F
	Material FFKM Perlast G75S FDA+3A	-15 ... 200 °C/-5 ... 392 °F
	Configuration	O-ring seal
	Size	23.47 x 2.62 mm

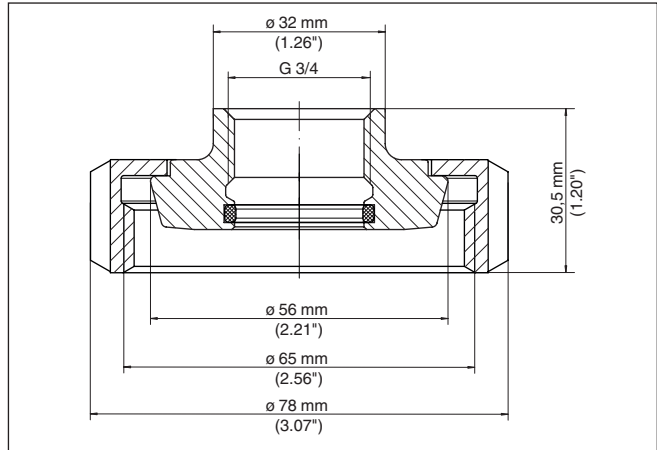


Fig. 50: Dimensions of threaded adapter G $\frac{3}{4}$ (DIN 3852-X) on slotted nut DN 40 (DIN 11851) PN 16

G $\frac{3}{4}$ - Slotted nut DN 50

Part	Feature	Characteristic
Adapter	Size, sensor side	G $\frac{3}{4}$
	Standard	DIN 3852-X
	Size, process side	DN 50
	Standard	DIN 11851
	Pressure stage	PN 16
	Material	316L
	Product code/Art. no.	GEWADA-A.RB3
Seal	Material EPDM	-40 ... 150 °C/-40 ... 302 °F
	Material Viton	-30 ... 200 °C/-22 ... 392 °F
	Material FFKM Kalrez 6375	-20 ... 200 °C/-4 ... 392 °F
	Material FFKM Perlast G75S FDA+3A	-15 ... 200 °C/-5 ... 392 °F
	Configuration	O-ring seal
	Size	23.47 x 2.62 mm

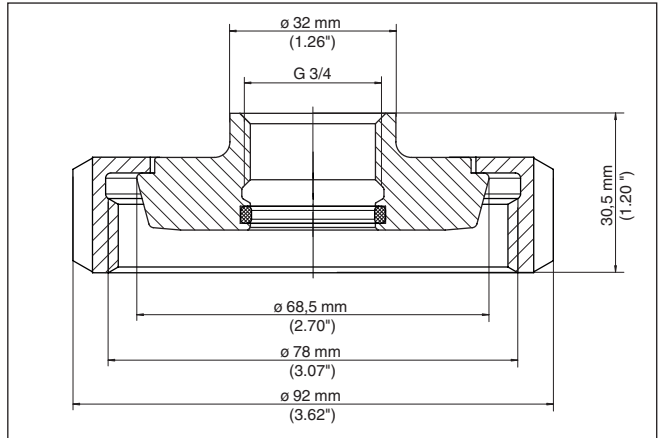


Fig. 51: Dimensions of threaded adapter G $\frac{3}{4}$ (DIN 3852-X) on slotted nut DN 50 (DIN 11851) PN 16

G1½ - Slotted nut DN 50

Part	Feature	Characteristic
Adapter	Size, sensor side	G1½
	Standard	DIN 3852-X
	Size, process side	DN 40
	Standard	DIN 11851
	Pressure stage	PN 16
	Material	316L
	Product code/Art. no.	GEWADA-B.RB3
Seal	Material EPDM FDA	-40 ... 150 °C/-40 ... 302 °F
	Material FKM Vi 780 FDA	-30 ... 200 °C/-22 ... 392 °F
	Configuration	O-ring seal
	Size	42 x 3 mm

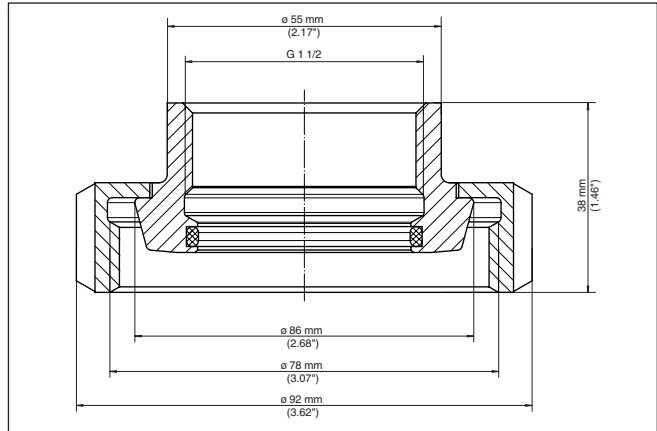


Fig. 52: Dimensions of threaded adapter G1½ (DIN 3852-X) on slotted nut DN 50 (DIN 11851) PN 16

7.3 Slotted nut acc. to DIN 11864-1

G¾ - Slotted nut DN 40

Part	Feature	Characteristic
Adapter	Size, sensor side	G¾
	Standard	DIN 3852-X
	Size, process side	DN 40
	Standard	DIN 11864-1
	Pressure stage	PN 16
	Material	316L
	Product code/Art. no.	GEWADA-A.RE3
Seal	Material EPDM	-40 ... 150 °C/-40 ... 302 °F
	Material Viton	-30 ... 200 °C/-22 ... 392 °F
	Material FFKM Kalrez 6375	-20 ... 200 °C/-4 ... 392 °F
	Material FFKM Perlast G75S FDA+3A	-15 ... 200 °C/5 ... 392 °F
	Configuration	O-ring seal
	Size	23.47 x 2.62 mm

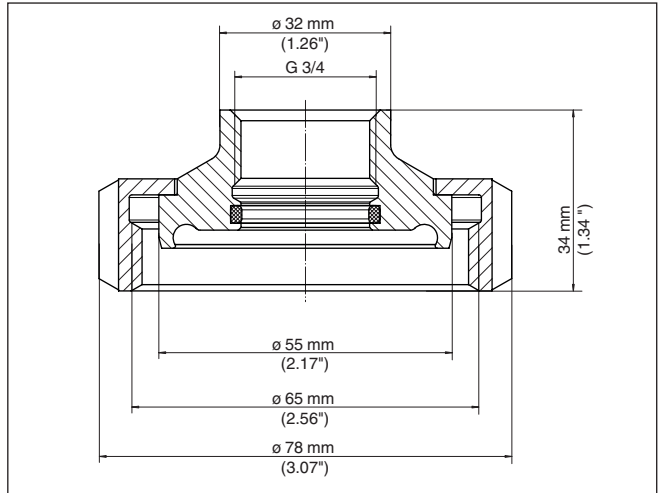


Fig. 53: Dimensions of threaded adapter G $\frac{3}{4}$ (DIN 3852-X) on slotted nut DN 40 (DIN 11864-1) PN 16

G $\frac{3}{4}$ - Slotted nut DN 50

Part	Feature	Characteristic
Adapter	Size, sensor side	G $\frac{3}{4}$
	Standard	DIN 3852-X
	Size, process side	DN 40
	Standard	DIN 11864-1
	Pressure stage	PN 16
	Material	316L
	Product code/Art. no.	GEWADA-A.RF3
Seal	Material EPDM	-40 ... 150 °C/-40 ... 302 °F
	Material Viton	-30 ... 200 °C/-22 ... 392 °F
	Material FFKM Kalrez 6375	-20 ... 200 °C/-4 ... 392 °F
	Material FFKM Perlast G75S FDA+3A	-15 ... 200 °C/-5 ... 392 °F
	Configuration	O-ring seal
	Size	23.47 x 2.62 mm

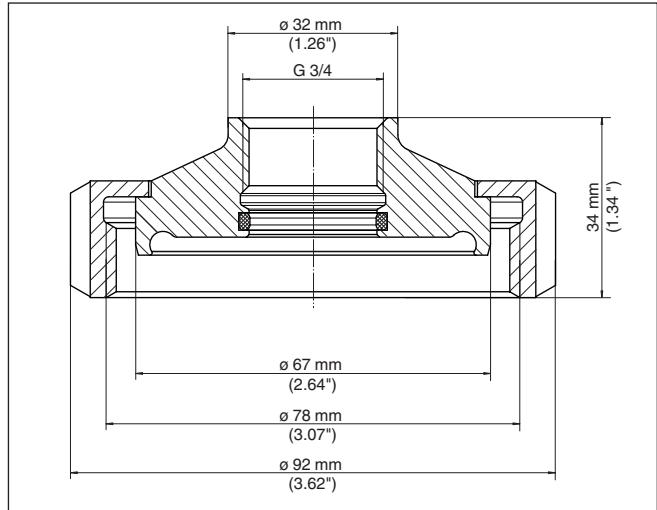


Fig. 54: Dimensions of threaded adapter G $\frac{3}{4}$ (DIN 3852-X) on slotted nut DN 50 (DIN 11864-1) PN 16

G1½ - Slotted nut DN 50

Part	Feature	Characteristic
Adapter	Size, sensor side	G1½
	Standard	DIN 3852-X
	Size, process side	DN 40
	Standard	DIN 11864-1
	Pressure stage	PN 16
	Material	316L
	Product code/Art. no.	GEWADA-B.RF3
Seal	Material EPDM FDA	-40 ... 150 °C/-40 ... 302 °F
	Material FKM Vi 780 FDA	-30 ... 200 °C/-22 ... 392 °F
	Configuration	O-ring seal
	Size	42 x 3 mm

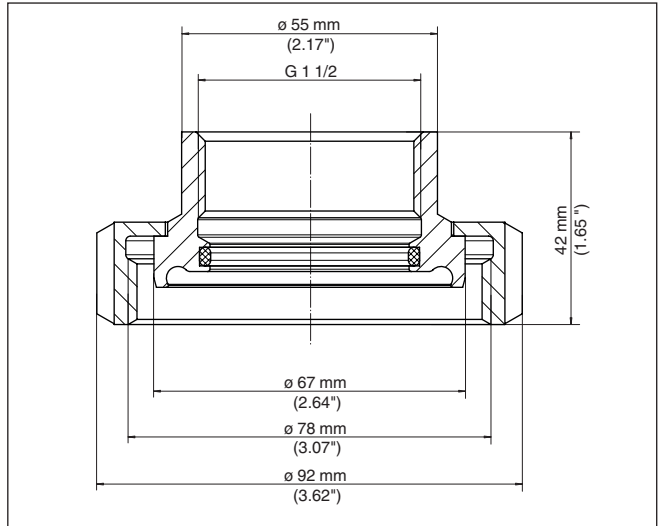
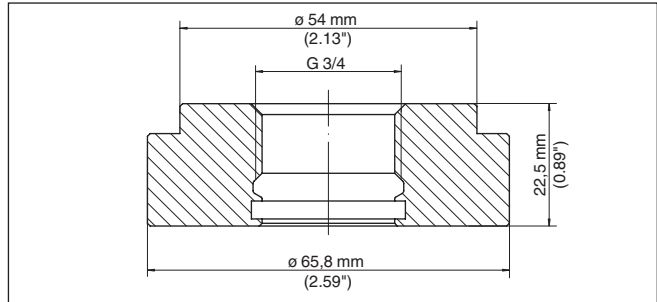


Fig. 55: Dimensions of threaded adapter G1½ (DIN 3852-X) on slotted nut DN 50 (DIN 11864-1) PN 16

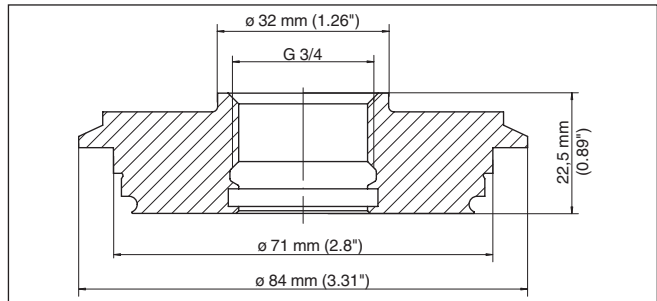
7.4 Further hygienic fittings

G¾ - DRD connection

Part	Feature	Characteristic
Adapter	Size, sensor side	G¾
	Standard	DIN 3852-X
	Size, process side	-
	Standard	DRD
	Pressure stage	PN 16
	Material	316L
	Product code/Art. no.	GEWADA-A.AA3
Seal	Material EPDM	-40 ... 150 °C/-40 ... 302 °F
	Material Viton	-30 ... 200 °C/-22 ... 392 °F
	Material FFKM Kalrez 6375	-20 ... 200 °C/-4 ... 392 °F
	Material FFKM Perlast G75S FDA+3A	-15 ... 200 °C/-5 ... 392 °F
	Configuration	O-ring seal
	Size	23.47 x 2.62 mm

Fig. 56: Dimensions adapter G $\frac{3}{4}$ (DIN 3852-X) on DRDG $\frac{3}{4}$ - Varivent DN 32

Part	Feature	Characteristic
Adapter	Size, sensor side	G $\frac{3}{4}$
	Standard	DIN 3852-X
	Size, process side	DN 32
	Standard	Tuchenhagen
	Pressure stage	PN 16
	Material	316L
	Product code/Art. no.	GEWADA-A.TA3
Seal	Material EPDM	-40 ... 150 °C/-40 ... 302 °F
	Configuration	O-ring seal
	Size	23.47 x 2.62 mm

Fig. 57: Dimensions adapter G $\frac{3}{4}$ (DIN 3852-X) on Tuchenhagen DN 32

8 Threaded adapter - VEGABAR 80 series

8.1 Clamp according to DIN 32676, ISO 2852

G1 - Clamp 1½"

Part	Feature	Characteristic
Adapter	Size, sensor side	G1
	Standard	DIN 3852-X
	Size, process side	Clamp 1½"
	Standard	DIN 32676, ISO 2852
	Pressure stage	PN 16
	Material	316L
	Product code/Art. no.	GEWADA-D.GLX
Seal	Sensor side	-

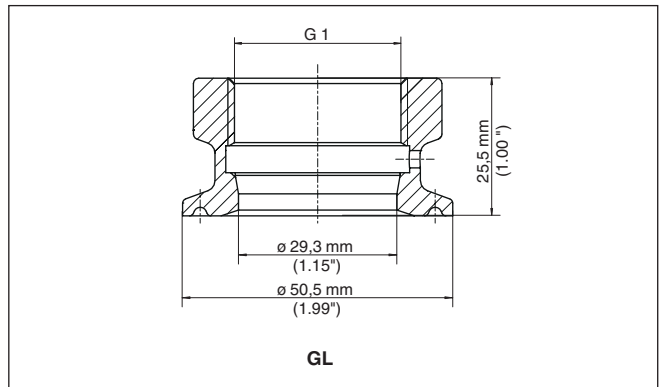


Fig. 58: Dimensions of threaded adapter G1 (DIN 3852-X) on Clamp 1½" (DIN 32676, ISO 2852) PN 16

G1 - Clamp 2"

Part	Feature	Characteristic
Adapter	Size, sensor side	G1
	Standard	DIN 3852-X
	Size, process side	Clamp 2"
	Standard	DIN 32676, ISO 2852
	Pressure stage	PN 16
	Material	316L
	Product code/Art. no.	GEWADA-D.GMX
Seal	Sensor side	-

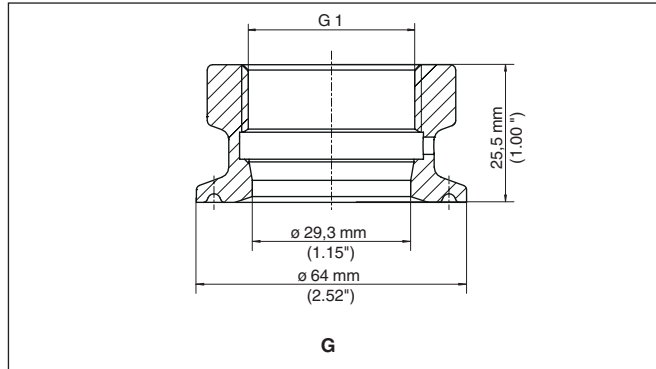


Fig. 59: Dimensions of threaded adapter G1 (DIN 3852-X) on Clamp 2" (DIN 32676, ISO 2852) PN 16

8.2 Varivent

G1 - Varivent Form F 25

Part	Feature	Characteristic
Adapter	Size, sensor side	G1
	Standard	DIN 3852-X
	Size, process side	DN 25/32
	Standard	Varivent
	Pressure stage	PN 16
	Material	316L
	Product code/Art. no.	GEWADA-D.GNX
Seal	Sensor side	-

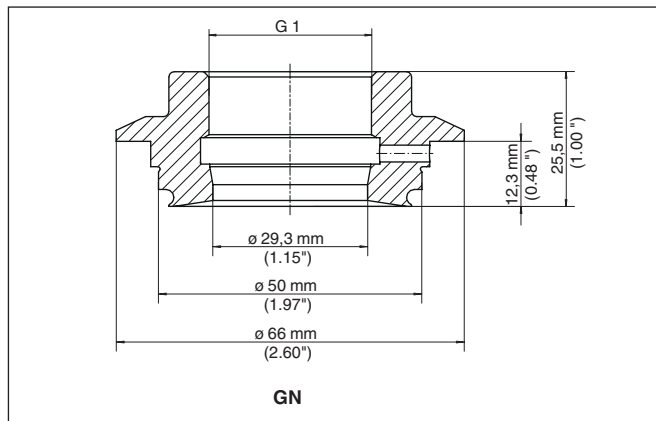


Fig. 60: Dimensions of threaded adapter G1 (DIN 3852-X) on Varivent Form F 25

48094-EN-200804

G1 - Varivent Form N 50-40

Part	Feature	Characteristic
Adapter	Size, sensor side	G1
	Standard	DIN 3852-X
	Size, process side	DN 40/50
	Standard	Varivent
	Pressure stage	PN 16
	Material	316L
	Product code/Art. no.	GEWADA-D.GOX
Seal	Sensor side	-

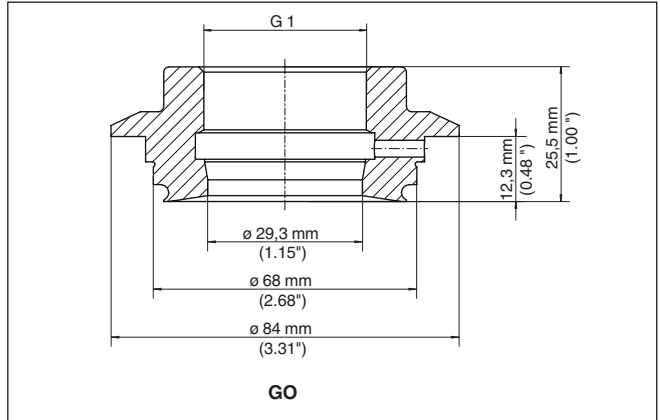


Fig. 61: Dimensions of threaded adapter G1 (DIN 3852-X) on Varivent Form N 50-40

9 Threaded adapter - VEGACAP, VEGACAL, VEGAWAVE

9.1 VEGACAP 63/64, VEGACAL 63/64

G $\frac{3}{4}$ - Clamp 1 $\frac{1}{2}$ "

Part	Feature	Characteristic
Adapter	Size, sensor side	G $\frac{3}{4}$
	Standard	DIN 3852-X
	Size, process side	Clamp 1 $\frac{1}{2}$ "
	Standard	DIN 32676, ISO 2852
	Pressure stage	PN 16
	Material	316L
	Product code/Art. no.	GEWADA-E.GE3
Seal	Material EPDM	-40 ... 150 °C/-40 ... 302 °F
	Material FKM Vi 780 FDA	-10 ... 120 °C/-14 ... 248 °F
	Configuration	Seal ring
	Size	ø 50.5 - 35.3 mm

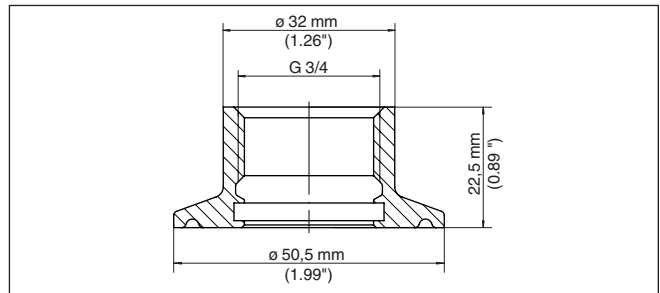


Fig. 62: Dimensions of threaded adapter G $\frac{3}{4}$ (DIN 3852-X) on Clamp 1 $\frac{1}{2}$ " (DIN 32676, ISO 2852) PN 16

G $\frac{3}{4}$ - Clamp 2"

Part	Feature	Characteristic
Adapter	Size, sensor side	G $\frac{3}{4}$
	Standard	DIN 3852-X
	Size, process side	Clamp 2"
	Standard	DIN 32676, ISO 2852
	Pressure stage	PN 16
	Material	316L
	Product code/Art. no.	GEWADA-E.CA3

Part	Feature	Characteristic
Seal	Material EPDM	-40 ... 150 °C/-40 ... 302 °F
	Material FKM Vi 780 FDA	-10 ... 120 °C/-14 ... 248 °F
	Configuration	Seal ring
	Size	ø 64 - 48 mm

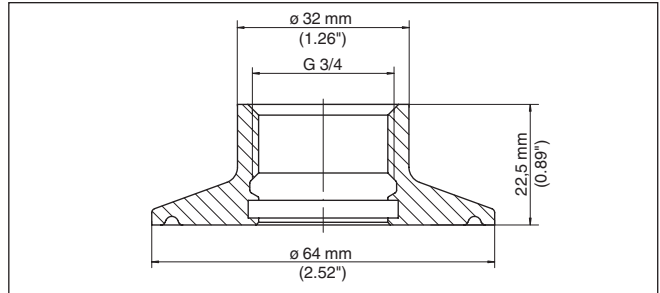


Fig. 63: Dimensions of threaded adapter G1½ (DIN 3852-X) on Clamp 2" (DIN 32676, ISO 2852) PN 16

G¾ - Slotted nut DN 25

Part	Feature	Characteristic
Adapter	Size, sensor side	G¾
	Standard	DIN 3852-X
	Size, process side	DN 25
	Standard	DIN 11851
	Pressure stage	PN 25
	Material	316L
	Product code/Art. no.	GEWADA-E.CB3
Seal	Material EPDM	-40 ... 150 °C/-40 ... 302 °F
	Material FKM Vi 780 FDA	-10 ... 120 °C/-14 ... 248 °F
	Configuration	Seal ring
	Size	ø 54 x 64 x 5 mm

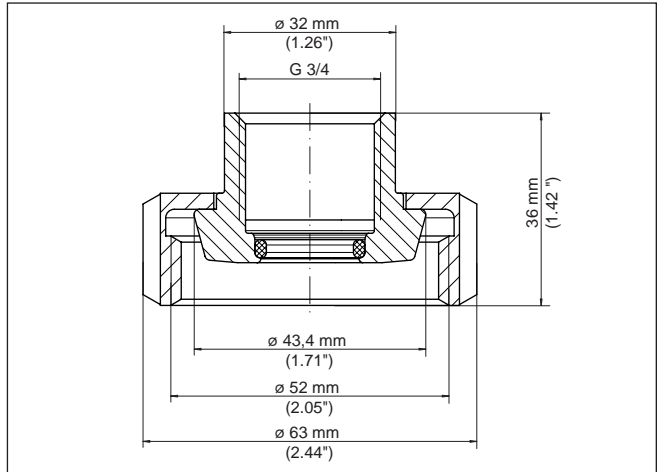


Fig. 64: Dimensions of threaded adapter G $\frac{3}{4}$ (DIN 3852-X) on slotted nut DN 25 (DIN 11851) PN 25

G $\frac{3}{4}$ - Slotted nut DN 50

Part	Feature	Characteristic
Adapter	Size, sensor side	G $\frac{3}{4}$
	Standard	DIN 3852-X
	Size, process side	DN 50
	Standard	DIN 11851
	Pressure stage	PN 25
	Material	316L
	Product code/Art. no.	GEWADA-E.CBX
Seal	Material EPDM	-40 ... 150 °C/-40 ... 302 °F
	Material FKM Vi 780 FDA	-10 ... 120 °C/-14 ... 248 °F
	Configuration	Seal ring
	Size	ø 54 x 64 x 5 mm

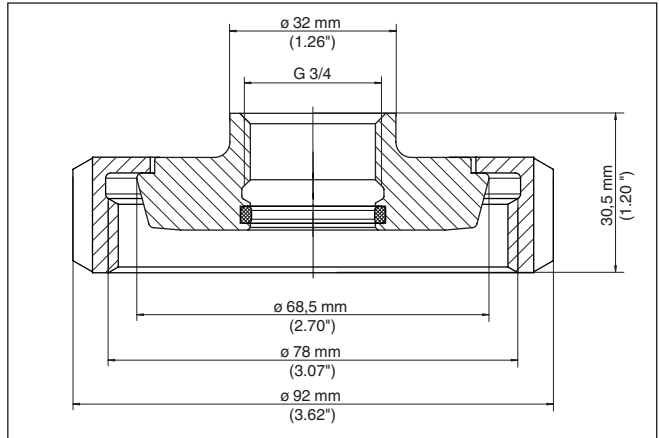


Fig. 65: Dimensions of threaded adapter G $\frac{3}{4}$ (DIN 3852-X) on slotted nut DN 50 (DIN 11851) PN 25

G $\frac{3}{4}$ - Hygienic connection with comp

Part	Feature	Characteristic
Adapter	Size, sensor side	G $\frac{3}{4}$
	Standard	DIN 3852-X
	Size, process side	DN 40
	Standard	DIN 11851
	Pressure stage	PN 16
	Material	316L
	Product code/Art. no.	GEWADA-E.LA3
Seal	Material EPDM	-40 ... 150 °C/-40 ... 302 °F
	Material FKM Vi 780 FDA	-10 ... 120 °C/-14 ... 248 °F
	Configuration	Seal ring
	Size	ø 54 x 64 x 5 mm

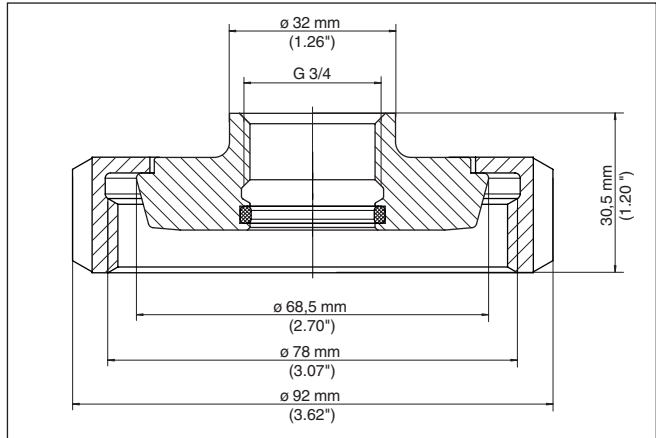


Fig. 66: Dimensions of threaded adapter G $\frac{3}{4}$ (DIN 3852-X) on slotted nut DN 50 (DIN 11851) PN 16

9.2 VEGAWAVE

G1 $\frac{1}{2}$ - Clamp 2"

Part	Feature	Characteristic
Adapter	Size, sensor side	G1 $\frac{1}{2}$
	Standard	DIN 3852-X
	Size, process side	Clamp 2"
	Standard	DIN 32676, ISO 2852
	Pressure stage	PN 16
	Material	316L
	Product code/Art. no.	GEWADA-C.CA1
Seal	Material EPDM FDA	-40 ... 200 °C/-40 ... 392 °F
	Material Viton FDA	-30 ... 200 °C/-22 ... 392 °F
	Configuration	Seal ring
	Size	ø 64 - 48 mm

Dimensions:

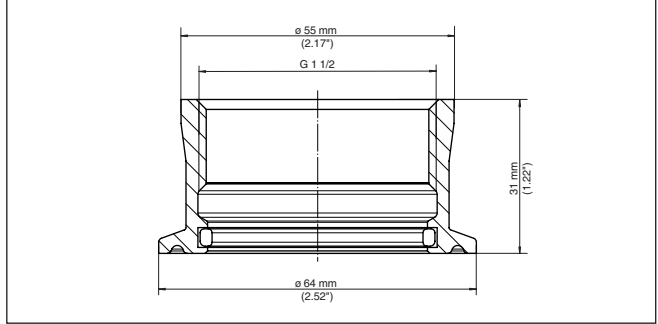


Fig. 67: Dimensions of threaded adapter G1½ (DIN 3852-X) on Clamp 2" (DIN 32676, ISO 2852) PN 16

G1½ - Clamp 2½"

Part	Feature	Characteristic
Adapter	Size, sensor side	G1½
	Standard	DIN 3852-X
	Size, process side	Clamp 2½"
	Standard	DIN 32676, ISO 2852
	Pressure stage	PN 16
	Material	316L
	Product code/Art. no.	GEWADA-C.CD3
Seal	Material EPDM FDA	-40 ... 200 °C/-40 ... 392 °F
	Material Viton FDA	-30 ... 200 °C/-22 ... 392 °F
	Configuration	Seal ring
	Size	ø 77.5 - 60.7 mm

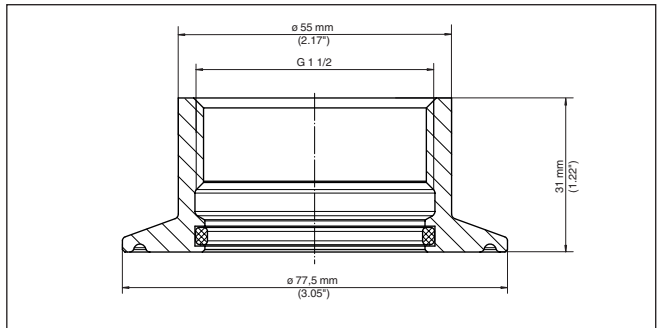


Fig. 68: Dimensions of threaded adapter G1½ (DIN 3852-X) on Clamp 2½" (DIN 32676, ISO 2852) PN 16

**G1½ - Slotted nut DN 50 -
DIN 11851**

Part	Feature	Characteristic
Adapter	Size, sensor side	G1½
	Standard	DIN 3852-X
	Size, process side	DN 40
	Standard	DIN 11851
	Pressure stage	PN 16
	Material	316L
	Product code/Art. no.	GEWADA-B.RB3
Seal	Material EPDM FDA	-40 ... 150 °C/-40 ... 302 °F
	Material FKM Vi 780 FDA	-30 ... 200 °C/-22 ... 392 °F
	Configuration	Seal ring
	Size	ø 54 x 64 x 5 mm

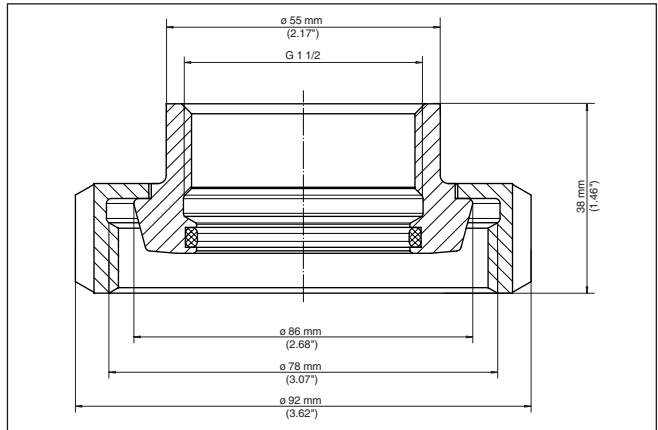


Fig. 69: Dimensions of threaded adapter G1½ (DIN 3852-X) on slotted nut DN 50 (DIN 11851) PN 16

**G1½ - Slotted nut DN 50 -
DIN 11864-1**

Data:

Part	Feature	Characteristic
Adapter	Size, sensor side	G1½
	Standard	DIN 3852-X
	Size, process side	DN 40
	Standard	DIN 11864-1
	Pressure stage	PN 16
	Material	316L
	Product code/Art. no.	GEWADA-B.RF3

Part	Feature	Characteristic
Seal	Material EPDM FDA	-40 ... 150 °C/-40 ... 302 °F
	Material FKM Vi 780 FDA	-30 ... 200 °C/-22 ... 392 °F
	Configuration	Seal ring
	Size	ø 54 x 64 x 5 mm

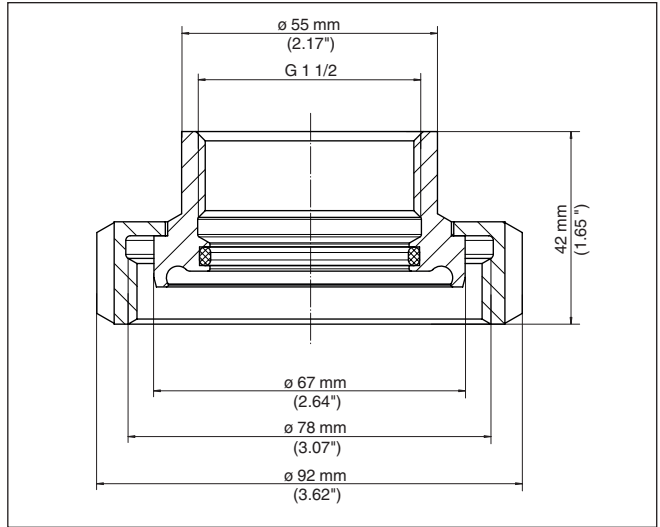


Fig. 70: Dimensions of threaded adapter G1 1/2 (DIN 3852-X) on slotted nut DN 50 (DIN 11864-1) PN 16

10 Hygienic adapter - VEGABAR 20, 30 series, VEGAPOINT 10, 20 series

10.1 Technical data, sealing concept

Common technical data

	Feature	Characteristic
Hygienic adapter	Material	1.4435
	Surface	$Ra \leq 0.76 \mu m$
	Hygiene certificate	FDA, EG 1935/2004
Torque max.	Cone seal	100 Nm (73.76 lbf ft)
	O-ring seal	50 Nm (36.88 lbf ft)

Sealing concept metal/metal

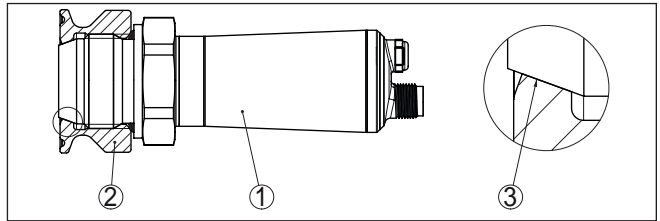


Fig. 71: Cone seal G1 VEGABAR metal/metal

- 1 Sensor
- 2 Hygienic adapter
- 3 Seal metal/metal

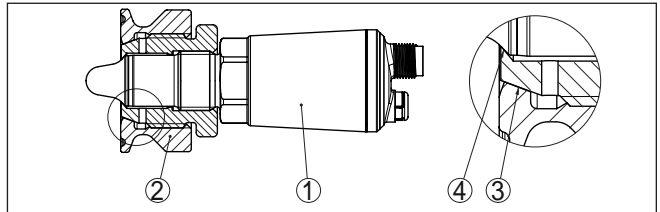


Fig. 72: Cone seal G1 VEGAPOINT plastic/metal plus metal/metal

- 1 Sensor
- 2 Hygienic adapter
- 3 Seal plastic/metal
- 4 Seal metal/metal

Sealing concept O-ring

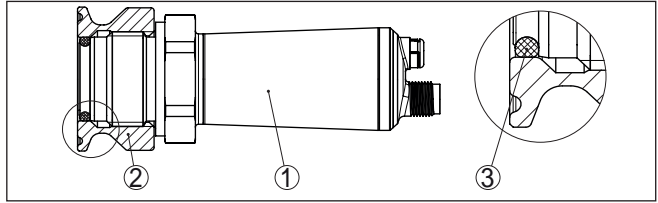


Fig. 73: O-ring seal G1 VEGABAR

- 1 Sensor
- 2 Hygienic adapter
- 3 O-ring seal

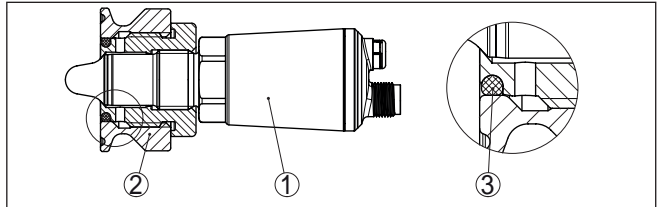


Fig. 74: O-ring seal G1 VEGAPOINT

- 1 Sensor
- 2 Hygienic adapter
- 3 O-ring seal

10.2 Direct welded socket

Thread G1 - Cone seal

Part	Feature	Characteristic
Welded socket	Size	G1 B
	Standard	ISO 228-1
	Product code/Art. no.	HYGADAPT-C.X7F
	Seal	Cone seal metal/metal

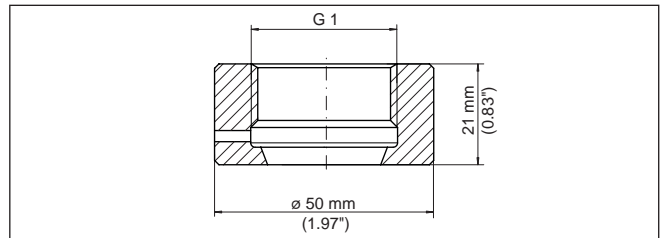


Fig. 75: Dimensions direct welded socket G1 - Cone seal

Thread G1 - O-ring seal

Part	Feature	Characteristic
Welded socket	Size	G1 B
	Standard	ISO 228-1
	Material	1.4435
	Surface	Ra ≤ 0.76 µm
	Additional hygiene certificate	EHEDG, 3A ¹⁾
	Product code/Art. no.	HYGADAPT-L.X7F
Seal	O-ring seal	

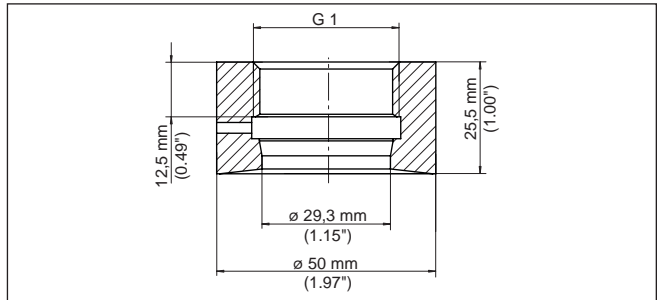


Fig. 76: Dimensions direct welded socket G1 - O-ring seal

Thread G1 for pipe mounting - Cone sealing

Part	Feature	Characteristic
Welded socket	Size	G1 B
	Standard	ISO 228-1
	Product code/Art. no.	HYGADAPT-C.X7G
	Seal	Cone seal metal/metal

¹⁾ EHEDG in preparation

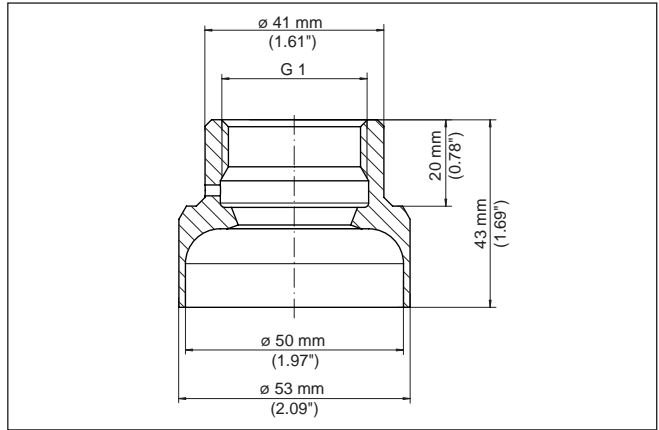


Fig. 77: Dimensions direct welded socket for pipe mounting G1 - Cone sealing

Thread G1 for pipe mounting - O-ring sealing

Part	Feature	Characteristic
Welded socket	Size	G1 B
	Standard	ISO 228-1
	Material	1.4435
	Surface	Ra ≤ 0.76 μm
	Additional hygiene certificate	EHEDG, 3A ²⁾
	Product code/Art. no.	HYGADAPT-L.X7G
	Seal	O-ring seal

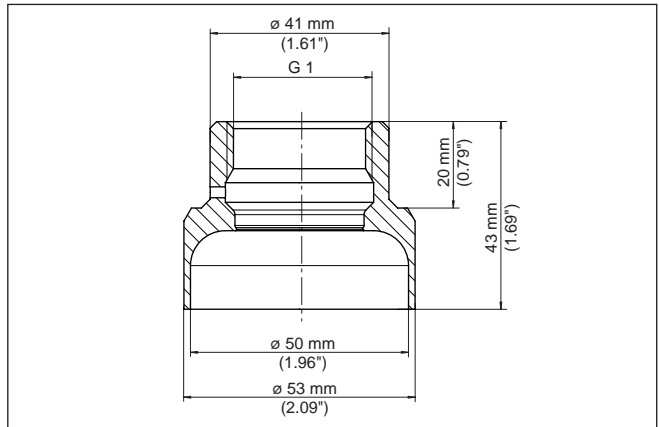


Fig. 78: Dimensions direct welded socket for pipe mounting G1 - O-ring sealing

²⁾ EHEDG in preparation

10.3 Clamp according to DIN 32676, ISO 2852

G1 - Clamp 1½" - Cone seal

Part	Feature	Characteristic
Hygienic adapter	Size, sensor side	G1
	Standard	DIN 3852-X
	Size, process side	Clamp 1½"
	Standard	DIN 32676, ISO 2852
	Pressure stage	PN 40
	Product code/Art. no.	HYGADAPT-C.XAT

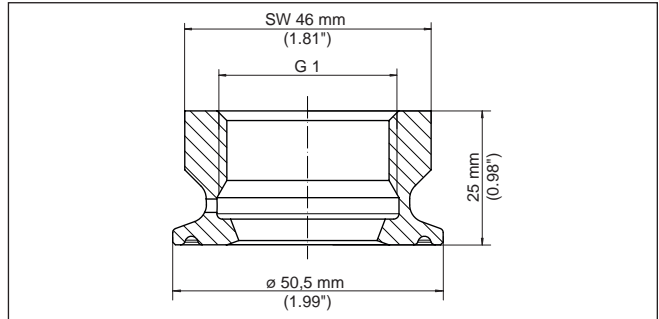


Fig. 79: Dimensions hygienic adapter G1 (DIN 3852-X) on Clamp 1½" (DIN 32676, ISO 2852) PN 40 - Cone seal

G1 - Clamp 2" - Cone seal

Part	Feature	Characteristic
Hygienic adapter	Size, sensor side	G1
	Standard	DIN 3852-X
	Size, process side	Clamp 2"
	Standard	DIN 32676, ISO 2852
	Pressure stage	PN 40
	Product code/Art. no.	HYGADAPT-C.XAR

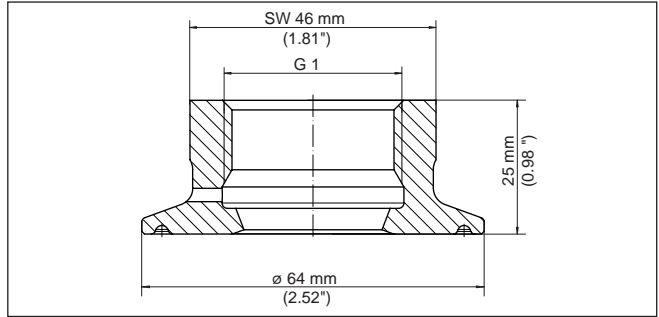


Fig. 80: Dimensions hygienic adapter G1 (DIN 3852-X) on Clamp 2" (DIN 32676, ISO 2852) PN 40 - Cone seal

G1 - Clamp 1½" - O-ring seal

Part	Feature	Characteristic
Hygienic adapter	Size, sensor side	G1
	Standard	DIN 3852-X
	Size, process side	Clamp 1½"
	Standard	DIN 32676, ISO 2852
	Pressure stage	PN 40
	Additional hygiene certificate	EHEDG, 3A ³⁾
	Product code/Art. no.	HYGADAPT-L.XAT

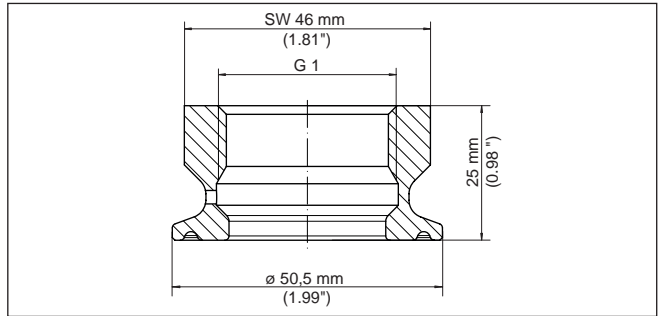


Fig. 81: Dimensions hygienic adapter G1 (DIN 3852-X) on Clamp 1½" (DIN 32676, ISO 2852) PN 40 - O-ring seal

³⁾ EHEDG in preparation

G1 - Clamp 2" - O-ring seal

Part	Feature	Characteristic
Hygienic adapter	Size, sensor side	G1
	Standard	DIN 3852-X
	Size, process side	Clamp 2"
	Standard	DIN 32676, ISO 2852
	Pressure stage	PN 40
	Additional hygiene certificate	EHEDG, 3A ⁴⁾
	Product code/Art. no.	HYGADAPT-L.XAR

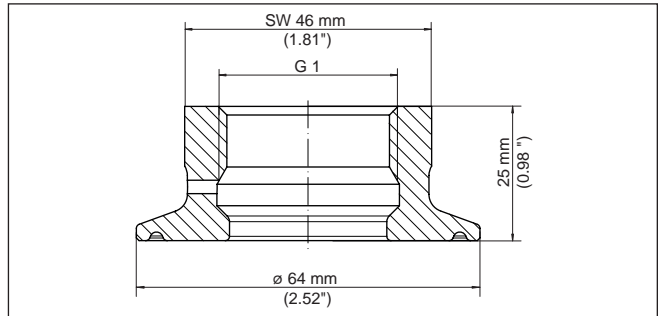


Fig. 82: Dimensions hygienic adapter G1 (DIN 3852-X) on Clamp 2" (DIN 32676, ISO 2852) PN 40 - O-ring seal

10.4 Slotted nut acc. to DIN 11851

G1 - Slotted nut DN 40 - Cone seal

Part	Feature	Characteristic
Hygienic adapter	Size, sensor side	G1
	Standard	DIN 3852-X
	Size, process side	DN 40
	Standard	DIN 11851
	Pressure stage	PN 40
	Product code/Art. no.	HYGADAPT-C.XEZ

⁴⁾ EHEDG in preparation

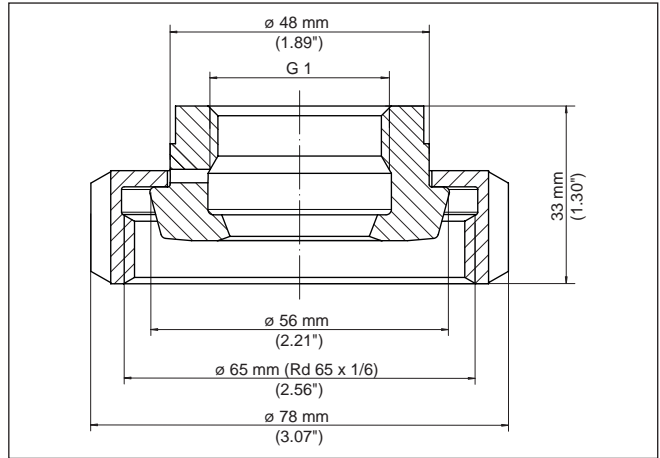


Fig. 83: Dimensions hygienic adapter G1 (DIN 3852-X) on slotted nut DN 40 (DIN 11851) PN 40 - Cone seal

G½1 - Slotted nut DN 50 - Cone seal

Part	Feature	Characteristic
Hygienic adapter	Size, sensor side	G1
	Standard	DIN 3852-X
	Size, process side	DN 50
	Standard	DIN 11851
	Pressure stage	PN 25
	Product code/Art. no.	HYGADAPT-C.XNB

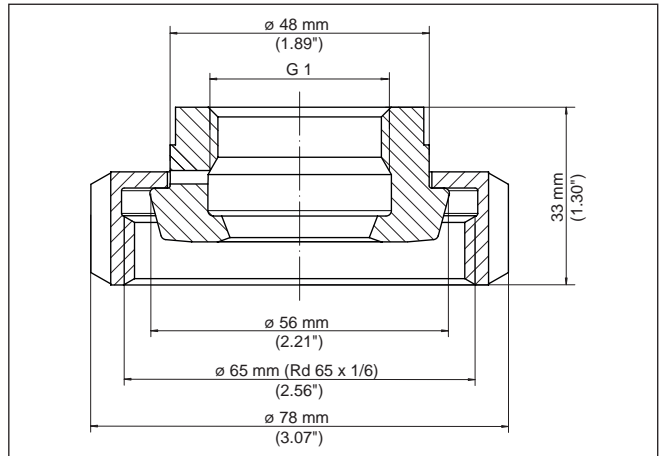


Fig. 84: Dimensions hygienic adapter G1 (DIN 3852-X) on slotted nut DN 40 (DIN 11851) PN 40 - Cone seal

48094-EN-200804

G1 - Slotted nut DN 40 - O-ring seal

Part	Feature	Characteristic
Hygienic adapter	Size, sensor side	G1
	Standard	DIN 3852-X
	Size, process side	DN 40
	Standard	DIN 11851
	Pressure stage	PN 40
	Additional hygiene certificate	EHEDG, 3A ⁵⁾
	Product code/Art. no.	HYGADAPT-L.XEZ

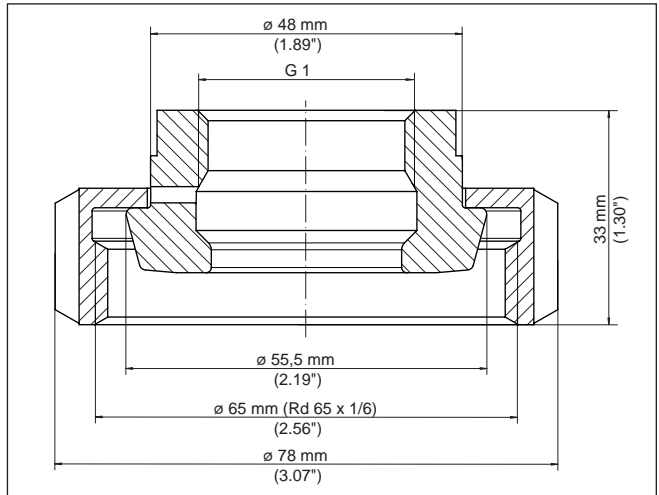


Fig. 85: Dimensions hygienic adapter G1 (DIN 3852-X) on slotted nut DN 40 (DIN 11851) PN 40 - O-ring seal

G½1 - Slotted nut DN 50 - O-ring seal

Part	Feature	Characteristic
Hygienic adapter	Size, sensor side	G1
	Standard	DIN 3852-X
	Size, process side	DN 50
	Standard	DIN 11851
	Pressure stage	PN 25
	Additional hygiene certificate	EHEDG, 3A ⁶⁾
	Product code/Art. no.	HYGADAPT-L.XEZ

⁵⁾ EHEDG in preparation

⁶⁾ EHEDG in preparation

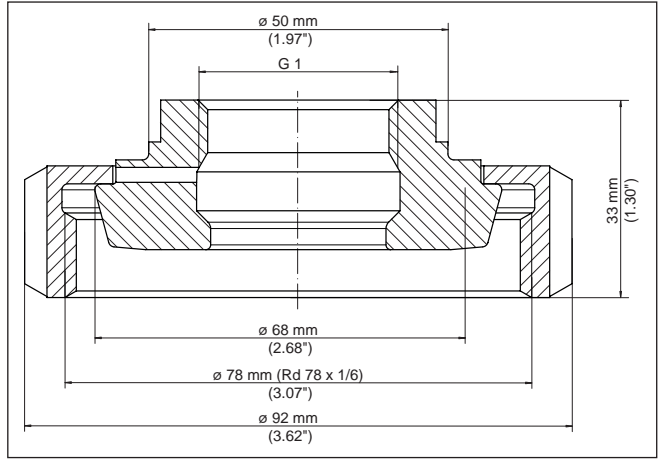


Fig. 86: Dimensions hygienic adapter G1 (DIN 3852-X) on slotted nut DN 50 (DIN 11851) PN 40 - O-ring

10.5 Slotted nut acc. to DIN 11864-1

G1 - Slotted nut DN 40 - Cone seal

Part	Feature	Characteristic
Hygienic adapter	Size, sensor side	G1
	Standard	DIN 3852-X
	Size, process side	DN 40
	Standard	DIN 11864-1
	Pressure stage	PN 40
	Product code/Art. no.	HYGADAPT-C.XE2

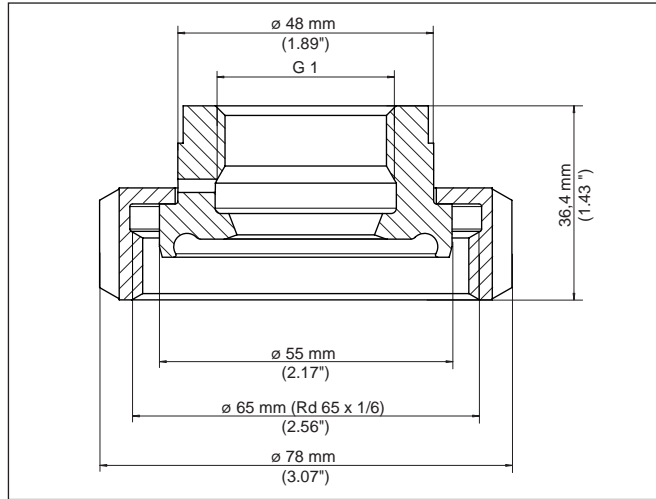


Fig. 87: Dimensions hygienic adapter G $\frac{1}{2}$ (DIN 3852-X) on slotted nut DN 40 (DIN 11864-1) PN 16 - Cone seal

G $\frac{1}{2}$ - Slotted nut DN 50 - Cone seal

Part	Feature	Characteristic
Hygienic adapter	Size, sensor side	G1
	Standard	DIN 3852-X
	Size, process side	DN 50
	Standard	DIN 11864-1
	Pressure stage	PN 25
	Product code/Art. no.	HYGADAPT-C.XE3

Dimensions:

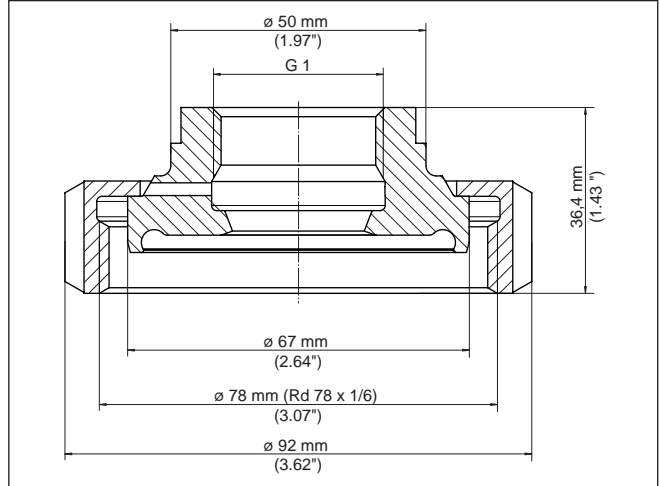


Fig. 88: Dimensions hygienic adapter G $\frac{3}{4}$ (DIN 3852-X) on slotted nut DN 50 (DIN 11864-1) PN 25 - Cone seal

G1 - Slotted nut DN 40 - O-ring seal

Part	Feature	Characteristic
Hygienic adapter	Size, sensor side	G1
	Standard	DIN 3852-X
	Size, process side	DN 40
	Standard	DIN 11864-1
	Pressure stage	PN 40
	Additional hygiene certificate	EHEDG, 3A ⁷⁾
	Product code/Art. no.	HYGADAPT-L.XE2

⁷⁾ EHEDG in preparation

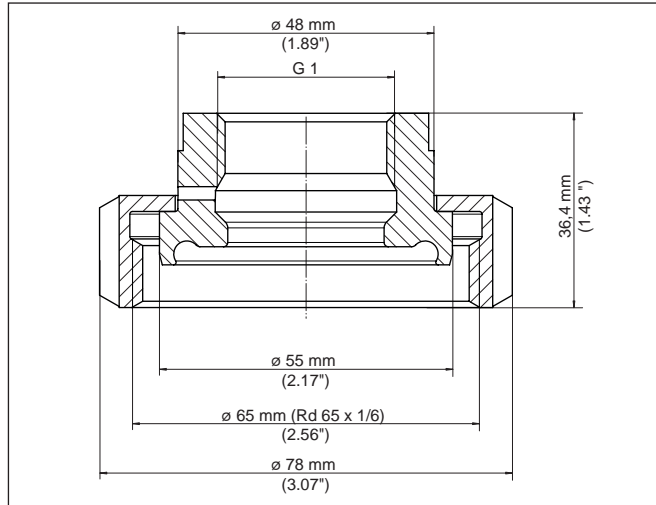


Fig. 89: Dimensions hygienic adapter G $\frac{1}{2}$ (DIN 3852-X) on slotted nut DN 40 (DIN 11864-1) PN 40 - O-ring seal

G $\frac{1}{2}$ - Slotted nut DN 50 - O-ring seal

Part	Feature	Characteristic
Hygienic adapter	Size, sensor side	G1
	Standard	DIN 3852-X
	Size, process side	DN 50
	Standard	DIN 11864-1
	Pressure stage	PN 25
	Additional hygiene certificate	EHEDG, 3A ⁸⁾
	Product code/Art. no.	HYGADAPT-L.XE3

⁸⁾ EHEDG in preparation

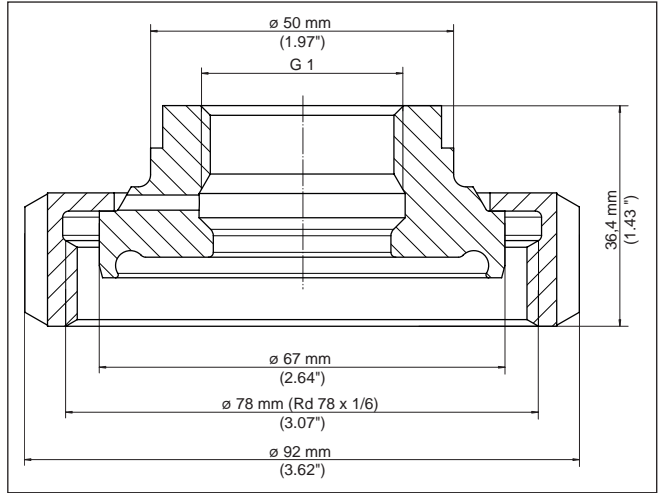


Fig. 90: Dimensions hygienic adapter G $\frac{3}{4}$ (DIN 3852-X) on slotted nut DN 50 (DIN 11864-1) PN 25 - O-ring seal

**G1 - Varivent Form F
DN 25 - Cone seal**

10.6 Further hygienic fittings

Part	Feature	Characteristic
Hygienic adapter	Size, sensor side	G1
	Standard	DIN 3852-X
	Size, process side	DN 32
	Standard	Varivent
	Pressure stage	PN 25
	Material	1.4435
	Surface	Ra ≤ 0.76 μm
Product code/Art. no.	HYGADAPT-C.XFS	

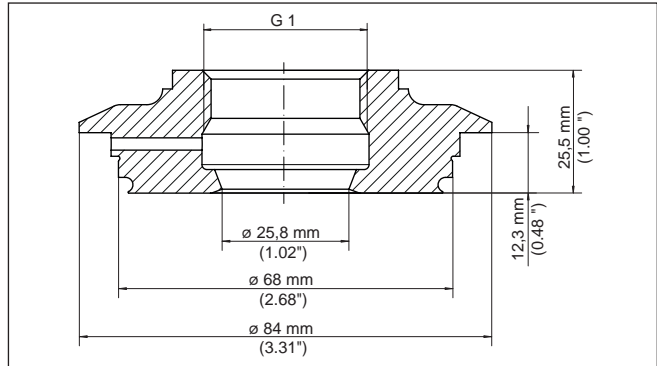


Fig. 91: Dimensions hygienic adapter G1 (DIN 3852-X) on Varivent Form F DN 25 - Cone seal

**G1 - Varivent Form N
DN 40 ... DN 100 - Cone
seal**

Part	Feature	Characteristic
Hygienic adapter	Size, sensor side	G1
	Standard	DIN 3852-X
	Size, process side	DN 40
	Standard	Varivent
	Pressure stage	PN 25
	Material	1.4435
	Surface	Ra ≤ 0.76 µm
	Product code/Art. no.	HYGADAPT-C.XFR

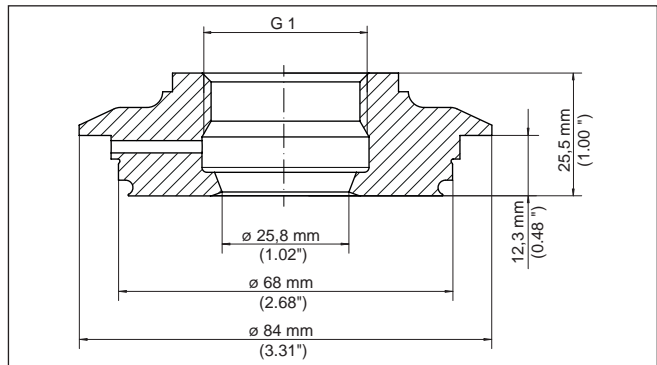


Fig. 92: Dimensions hygienic adapter G1 (DIN 3852-X) on Varivent Form N DN 40 ... DN 100 - Cone seal

**G1 - Varivent Form F
DN 25 - O-ring seal**

Part	Feature	Characteristic
Hygienic adapter	Size, sensor side	G1
	Standard	DIN 3852-X
	Size, process side	DN 40
	Standard	Varivent
	Pressure stage	PN 25
	Material	1.4435
	Surface	Ra ≤ 0.76 µm
	Additional hygiene certificate	EHEDG, 3A ⁹⁾
Product code/Art. no.	HYGADAPT-L.XFS	

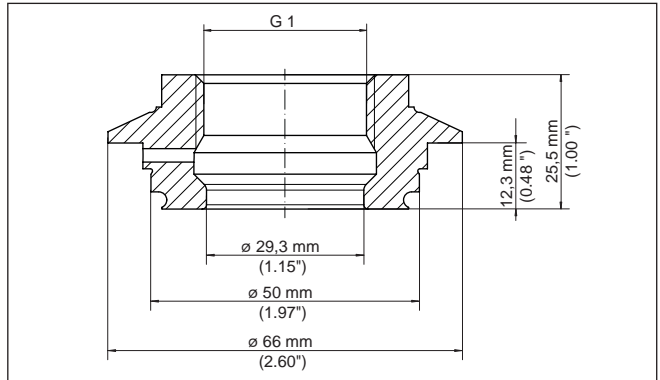


Fig. 93: Dimensions hygienic adapter G1 (DIN 3852-X) on Varivent Form F DN 25 - O-ring seal

**G1 - Varivent Form N
DN 40 ... DN 100 - O-ring
seal**

Part	Feature	Characteristic
Hygienic adapter	Size, sensor side	G1
	Standard	DIN 3852-X
	Size, process side	DN 40
	Standard	Varivent
	Pressure stage	PN 25
	Material	1.4435
	Surface	Ra ≤ 0.76 µm
	Additional hygiene certificate	EHEDG, 3A ¹⁰⁾
Product code/Art. no.	HYGADAPT-L.XFR	

⁹⁾ EHEDG in preparation

¹⁰⁾ EHEDG in preparation

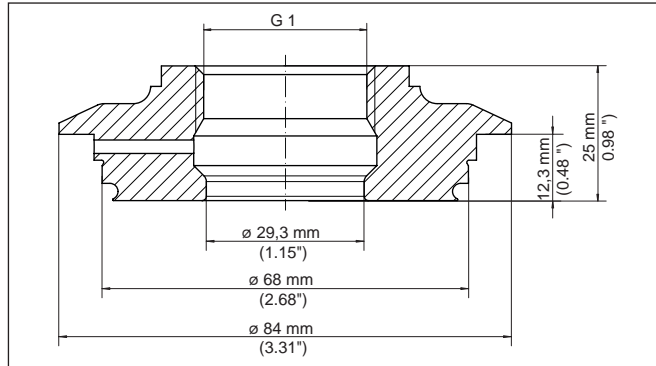


Fig. 94: Dimensions hygienic adapter G1 (DIN 3852-X) on Varivent Form N DN 40 ... DN 100 - O-ring seal

G1 - SMS DN 38 - Cone seal

Part	Feature	Characteristic
Hygienic adapter	Size, sensor side	G1
	Standard	DIN 3852-X
	Size, process side	DN 40
	Standard	SMS
	Pressure stage	PN 6
	Material	1.4435
	Surface	Ra ≤ 0.76 μm
	Hygiene certificate	FDA, EG 1935/2004, EHEDG ¹¹⁾
	Product code/Art. no.	HYGADAPT-C.XFA

¹¹⁾ EHEDG in preparation

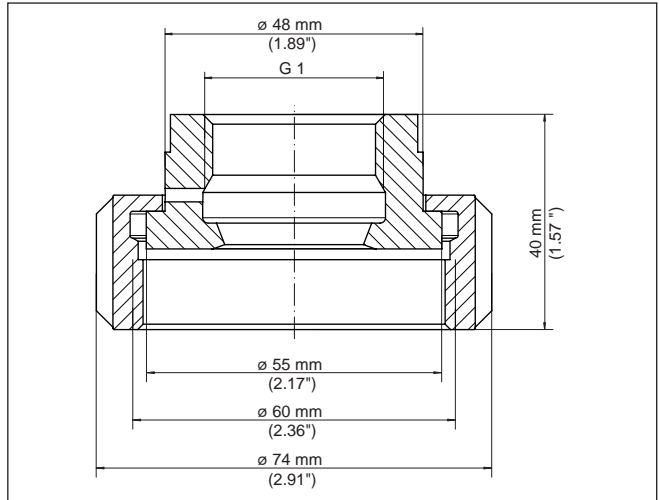


Fig. 95: Dimensions hygienic adapter G1 (DIN 3852-X) on SMS DN 38 - Cone seal

G1 - SMS DN 38 - O-ring seal

Part	Feature	Characteristic
Hygienic adapter	Size, sensor side	G1
	Standard	DIN 3852-X
	Size, process side	DN 40
	Standard	SMS
	Pressure stage	PN 6
	Material	1.4435
	Surface	Ra ≤ 0.76 µm
	Additional hygiene certificate	EHEDG, 3A ¹²⁾
Product code/Art. no.	HYGADAPT-L.XFA	

¹²⁾ EHEDG in preparation

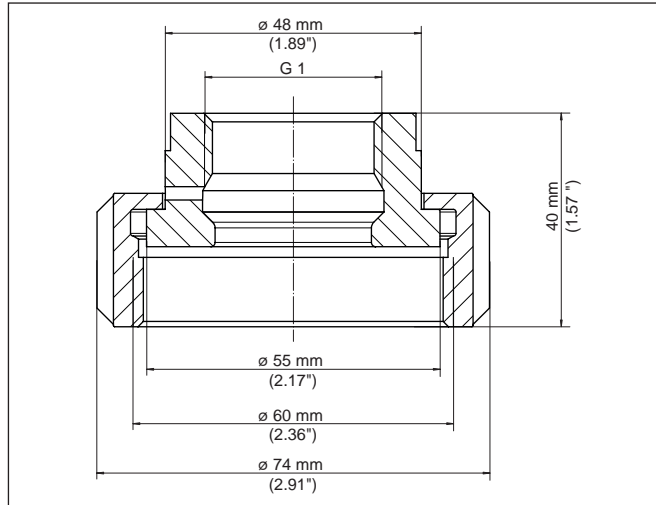


Fig. 96: Dimensions hygienic adapter G1 (DIN 3852-X) on SMS DN 25 - O-ring seal

11 Hygienic adapter - VEGAPOINT 10, 20 series

11.1 Technical data, sealing concept

Common technical data

Part	Feature	Characteristic
Hygienic adapter	Material	1.4435
	Surface	Ra ≤ 0.76 µm
	Hygiene certificate	FDA, EG 1935/2004
Torque max.	Cone seal plastic/metal	50 Nm (36.88 lbf ft)

Sealing concept plastic/metal

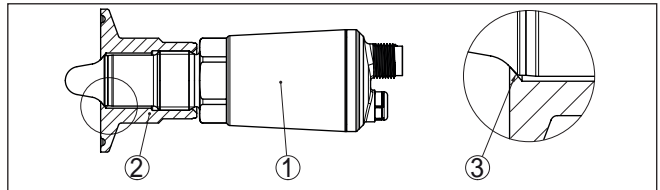


Fig. 97: Cone seal G $\frac{1}{2}$ VEGAPOINT plastic/metal

- 1 Sensor
- 2 Hygienic adapter
- 3 Seal plastic/metal

11.2 Direct welded socket

Thread G $\frac{1}{2}$ - Cone seal

Part	Feature	Characteristic
Welded socket	Size	G $\frac{1}{2}$ B
	Standard	ISO 228-1
	Product code/Art. no.	HYGADAPT-PX7F

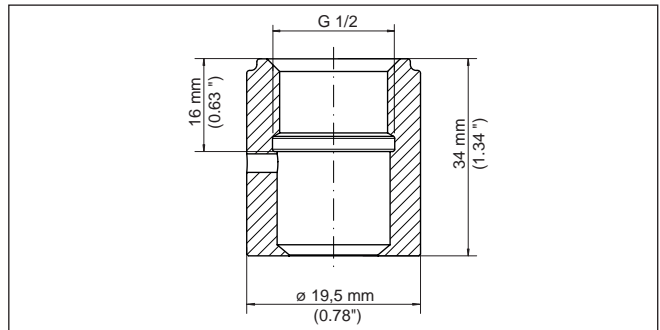


Fig. 98: Dimensions direct welded socket G $\frac{1}{2}$ - Cone seal

11.3 Clamp according to DIN 32676, ISO 2852

G $\frac{1}{2}$ - Clamp 1 $\frac{1}{2}$ " - Cone seal

Part	Feature	Characteristic
Hygienic adapter	Size, sensor side	G $\frac{1}{2}$
	Standard	DIN 3852-X
	Size, process side	Clamp 1 $\frac{1}{2}$ "
	Standard	DIN 32676, ISO 2852
	Pressure stage	PN 40
	Product code/Art. no.	HYGADAPT-P.XAT

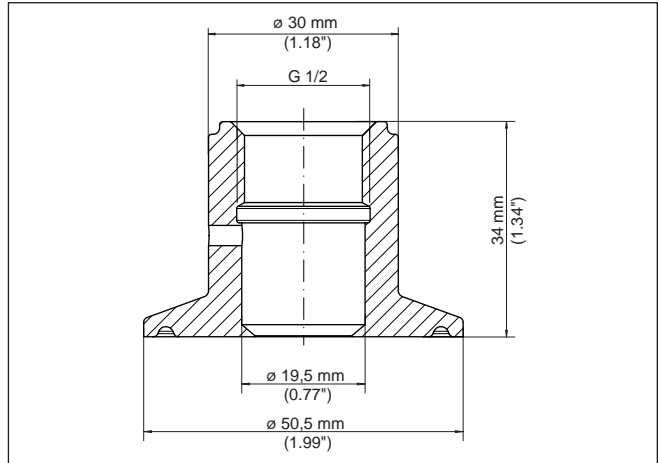


Fig. 99: Dimensions hygienic adapter G $\frac{1}{2}$ (DIN 3852-X) on Clamp 1 $\frac{1}{2}$ " (DIN 32676, ISO 2852) PN 40 - Cone seal

G $\frac{1}{2}$ - Clamp 2" - Cone seal

Part	Feature	Characteristic
Hygienic adapter	Size, sensor side	G $\frac{1}{2}$
	Standard	DIN 3852-X
	Size, process side	Clamp 2"
	Standard	DIN 32676, ISO 2852
	Pressure stage	PN 40
	Product code/Art. no.	HYGADAPT-C.XAR

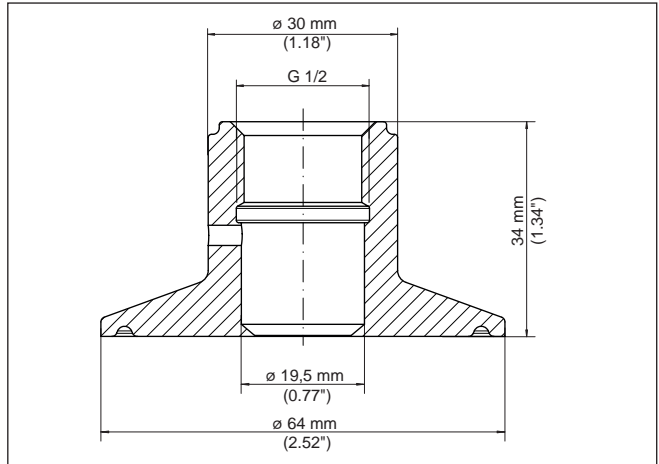


Fig. 100: Dimensions hygienic adapter G $\frac{1}{2}$ (DIN 3852-X) on Clamp 2" (DIN 32676, ISO 2852) PN 40 - Cone seal

11.4 Slotted nut acc. to DIN 11851

G $\frac{1}{2}$ - Slotted nut DN 25 - Cone seal

Part	Feature	Characteristic
Hygienic adapter	Size, sensor side	G $\frac{1}{2}$
	Standard	DIN 3852-X
	Size, process side	DN 25
	Standard	DIN 11851
	Pressure stage	PN 40
	Product code/Art. no.	HYGADAPT-P.XE5

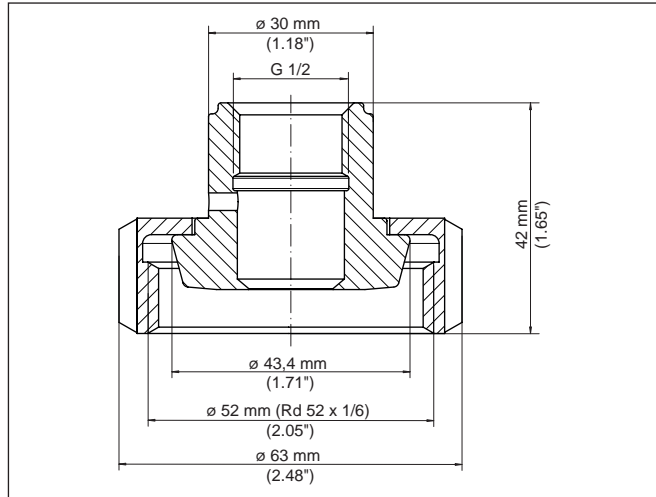


Fig. 101: Dimensions hygienic adapter G $\frac{1}{2}$ (DIN 3852-X) on slotted nut DN 25 (DIN 11851) PN 40 - Cone seal

G $\frac{1}{2}$ - Slotted nut DN 40 - Cone seal

Part	Feature	Characteristic
Hygienic adapter	Size, sensor side	G $\frac{1}{2}$
	Standard	DIN 3852-X
	Size, process side	DN 40
	Standard	DIN 11851
	Pressure stage	PN 40
	Product code/Art. no.	HYGADAPT-P.XEZ

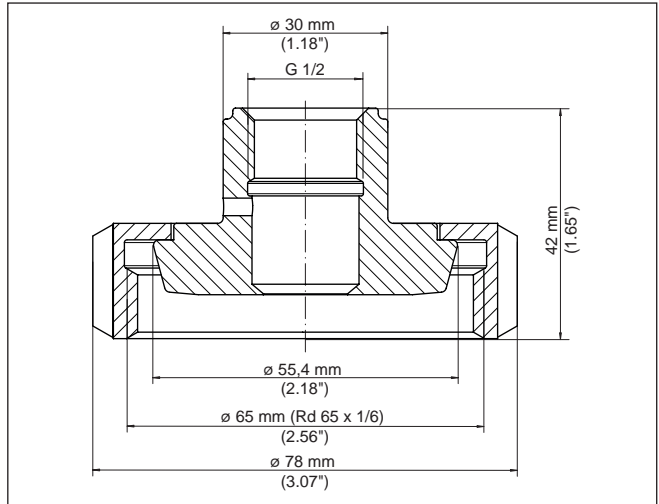


Fig. 102: Dimensions hygienic adapter G $\frac{1}{2}$ (DIN 3852-X) on slotted nut DN 40 (DIN 11851) PN 40 - Cone seal

11.5 Slotted nut acc. to DIN 11864-1

G $\frac{1}{2}$ - Slotted nut DN 25 - Cone seal

Part	Feature	Characteristic
Hygienic adapter	Size, sensor side	G $\frac{1}{2}$
	Standard	DIN 3852-X
	Size, process side	DN 25
	Standard	DIN 11864-1
	Pressure stage	PN 40
	Product code/Art. no.	HYGADAPT-P.XU5

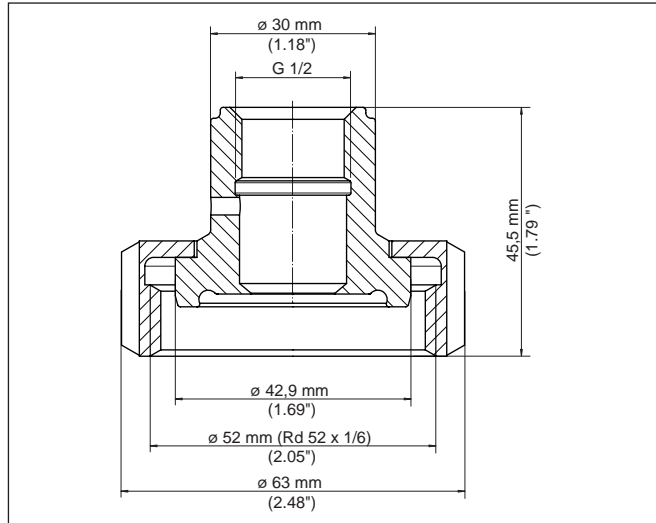


Fig. 103: Dimensions hygienic adapter G $\frac{1}{2}$ (DIN 3852-X) on slotted nut DN 25 (DIN 11851-1) PN 40 - Cone seal

G $\frac{1}{2}$ - Slotted nut DN 40 - Cone seal

Part	Feature	Characteristic
Hygienic adapter	Size, sensor side	G $\frac{1}{2}$
	Standard	DIN 3852-X
	Size, process side	DN 25
	Standard	DIN 11864-1
	Pressure stage	PN 40
	Product code/Art. no.	HYGADAPT-P.XE2

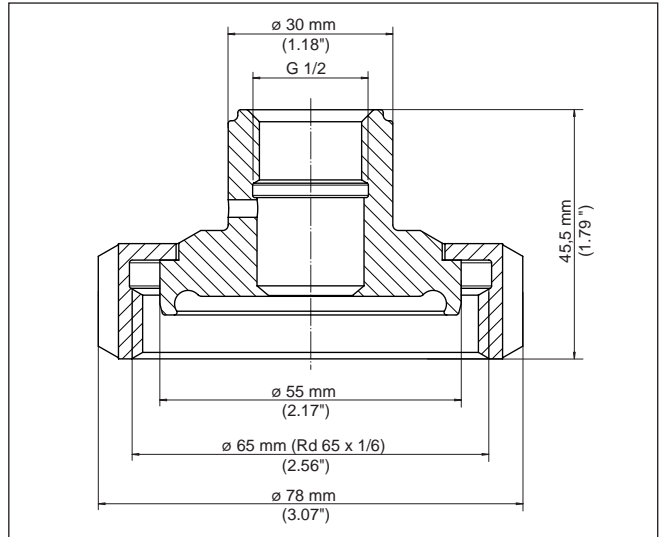


Fig. 104: Dimensions hygienic adapter G 1/2 (DIN 3852-X) on slotted nut DN 40 (DIN 11864-1) PN 40 - Cone seal

11.6 Further hygienic fittings

**G 1/2 - Varivent Form N
DN 40 ... DN 100 - Cone
seal**

Part	Feature	Characteristic
Hygienic adapter	Size, sensor side	G1
	Standard	DIN 3852-X
	Size, process side	DN 40
	Standard	Varivent
	Pressure stage	PN 25
	Product code/Art. no.	HYGADAPT-P.XFR

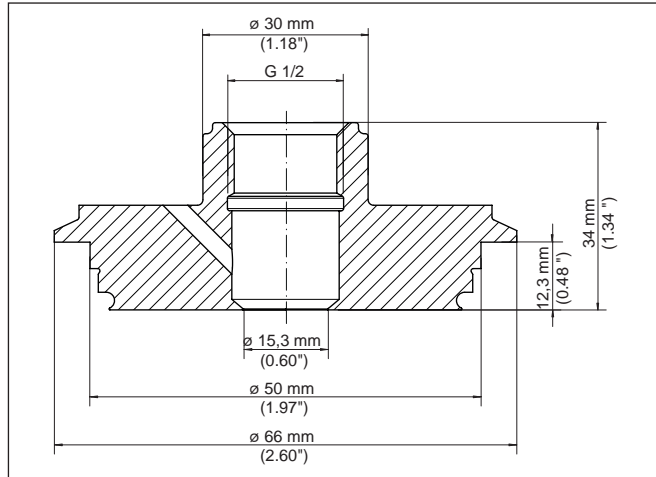


Fig. 105: Dimensions hygienic adapter G $\frac{1}{2}$ (DIN 3852-X) on Varivent Form N DN 40 ... DN 100 - Cone seal

G $\frac{1}{2}$ - Varivent Form F DN 25 - Cone seal

Part	Feature	Characteristic
Hygienic adapter	Size, sensor side	G1
	Standard	DIN 3852-X
	Size, process side	DN 32
	Standard	Varivent
	Pressure stage	PN 25
	Product code/Art. no.	HYGADAPT-P.XFS

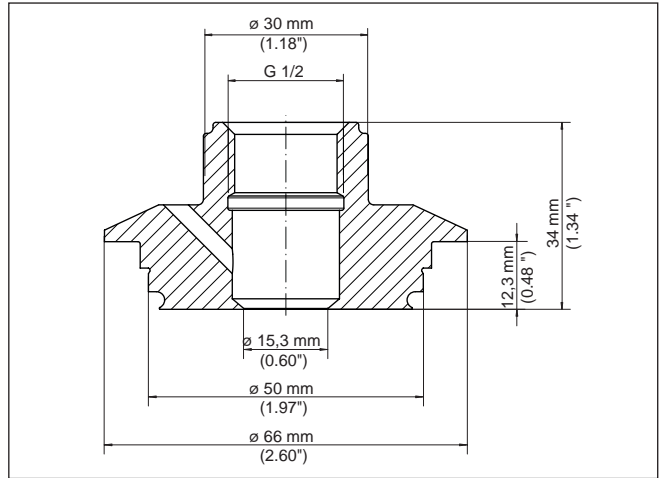


Fig. 106: Dimensions hygienic adapter G 1/2 (DIN 3852-X) on Varivent Form F DN 25 - Cone seal

G 1/2 - SMS DN 38 - Cone seal

Part	Feature	Characteristic
Hygienic adapter	Size, sensor side	G1
	Standard	DIN 3852-X
	Size, process side	DN 40
	Standard	SMS
	Pressure stage	PN 6
	Product code/Art. no.	HYGADAPT-P.XFA

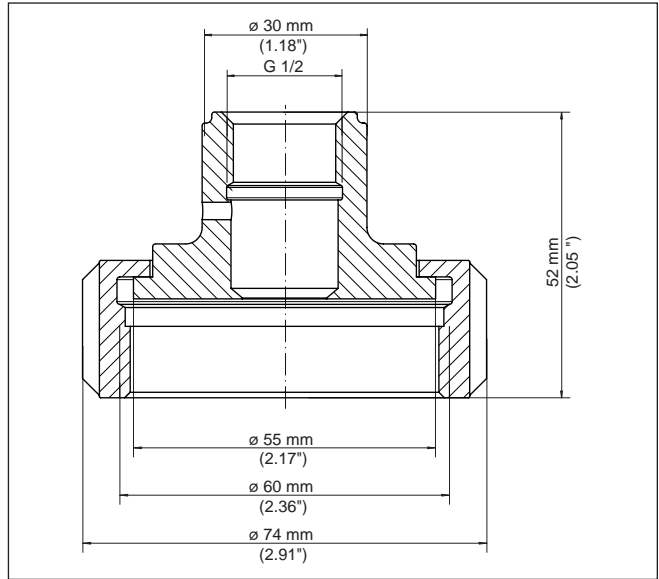


Fig. 107: Dimensions hygienic adapter G $\frac{1}{2}$ (DIN 3852-X) on SMS DN 38 - Cone seal

12 Hygiene adapter - VEGAPULS 10, 20, 30 series

12.1 Technical data, sealing concept

Common technical data

Part	Feature	Characteristic
Hygienic adapter	Material	1.4435
	Surface	$Ra \leq 0.76 \mu m$
	Hygiene certificate	FDA, EG 1935/2004
Torque max.		7 Nm (5.163 lbf ft)

Seal concept

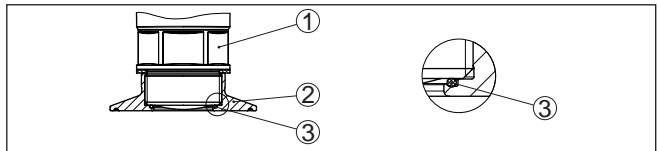


Fig. 108: Seal concept

- 1 Sensor
- 2 Hygienic adapter
- 3 Seal

12.2 Clamp according to DIN 32676, ISO 2852

G1½ - Clamp 2"

Part	Feature	Characteristic
Hygienic adapter	Size, sensor side	G1½
	Standard	DIN 3852-X
	Size, process side	Clamp 2"
	Standard	DIN 32676, ISO 2852
	Pressure stage	PN 40
	Product code/Art. no.	HYGADAPT-R.XC1

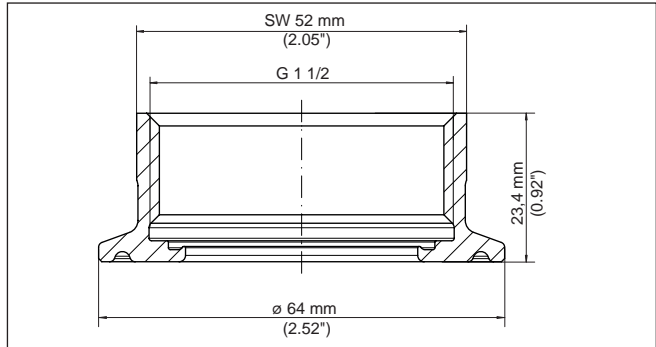


Fig. 109: Dimensions of hygiene adapter G $\frac{1}{2}$ (DIN 3852-X) on Clamp 2" (DIN 32676, ISO 2852) PN 40

12.3 Slotted nut acc. to DIN 11851

G1½ - Slotted nut DN 50

Part	Feature	Characteristic
Hygienic adapter	Size, sensor side	G $\frac{1}{2}$
	Standard	DIN 3852-X
	Size, process side	DN 50
	Standard	DIN 11851
	Pressure stage	PN 40
	Product code/Art. no.	HYGADAPT-R.XB1

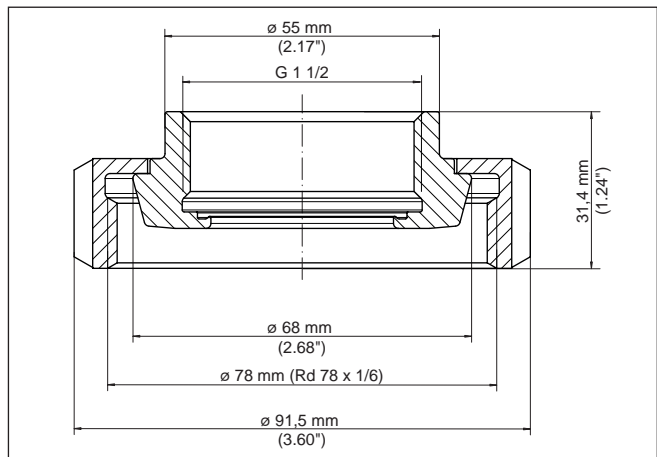


Fig. 110: Dimensions of hygiene adapter G $\frac{1}{2}$ (DIN 3852-X) on slotted nut DN 50 (DIN 11851) PN 40

13 Welding, mounting

13.1 Welding instructions



Information:

The following welding instructions are for information only. It is important that the welding regulations are always observed. The AD leaflets must also be noted when welding on pressure vessels.

Preparations

When welding stainless steel, utmost cleanliness is necessary. Rusty tools or screwed parts, e.g., are not allowed. Also make sure that no mild steel is processed in the vicinity.

Use sufficient inert gas for tack welding. Make sure that you only tack weld, not spot-weld. For tacking and welding, use pure argon protective gas.

Welding dummy

A suitable welding dummy must be used to avoid warping the welded socket.

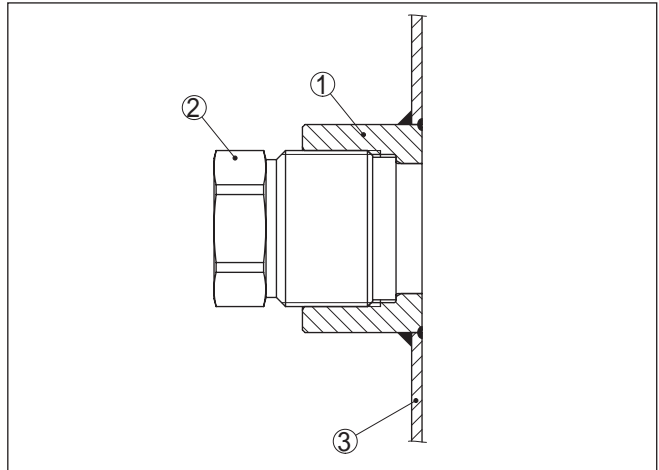


Fig. 111: Welding dummy

- 1 Welded socket
- 2 Dummy
- 3 Pipeline or vessel wall

Welding procedure

It is generally recommended to divide the weld joint into several segments.

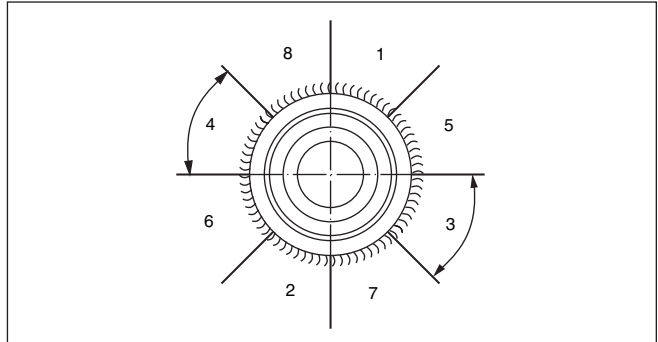


Fig. 112: Segmental welding

After welding a segment, go to the other side and weld the segment that lies exactly opposite. Interrupt the welding process after two segments and wait until the weld joint cools or carefully cool the weld joint yourself before you start welding again.

Pressure bearing capacity

The pressure bearing capacity of the welded socket depends on the quality of the weld as well as the material of the welded socket. In the case of threaded sockets, the total thread length must be utilized for pressure loading.

13.2 Mounting instructions threaded and hygienic adapter

Preparations

Use suitable spanners to screw the sensor into the adapter. The specifications are stated in the appropriate chapters of this manual or in the operating instructions manual of the respective sensor.

Mounting

Place the parts, especially with hygiene adapters, on a suitable, clean surface (e.g. workbench) and screw them together with the respective specified torque.



Note:

Avoid damage to the surface of the process fitting and adapter. Any damage can particularly impair the hygienic properties.

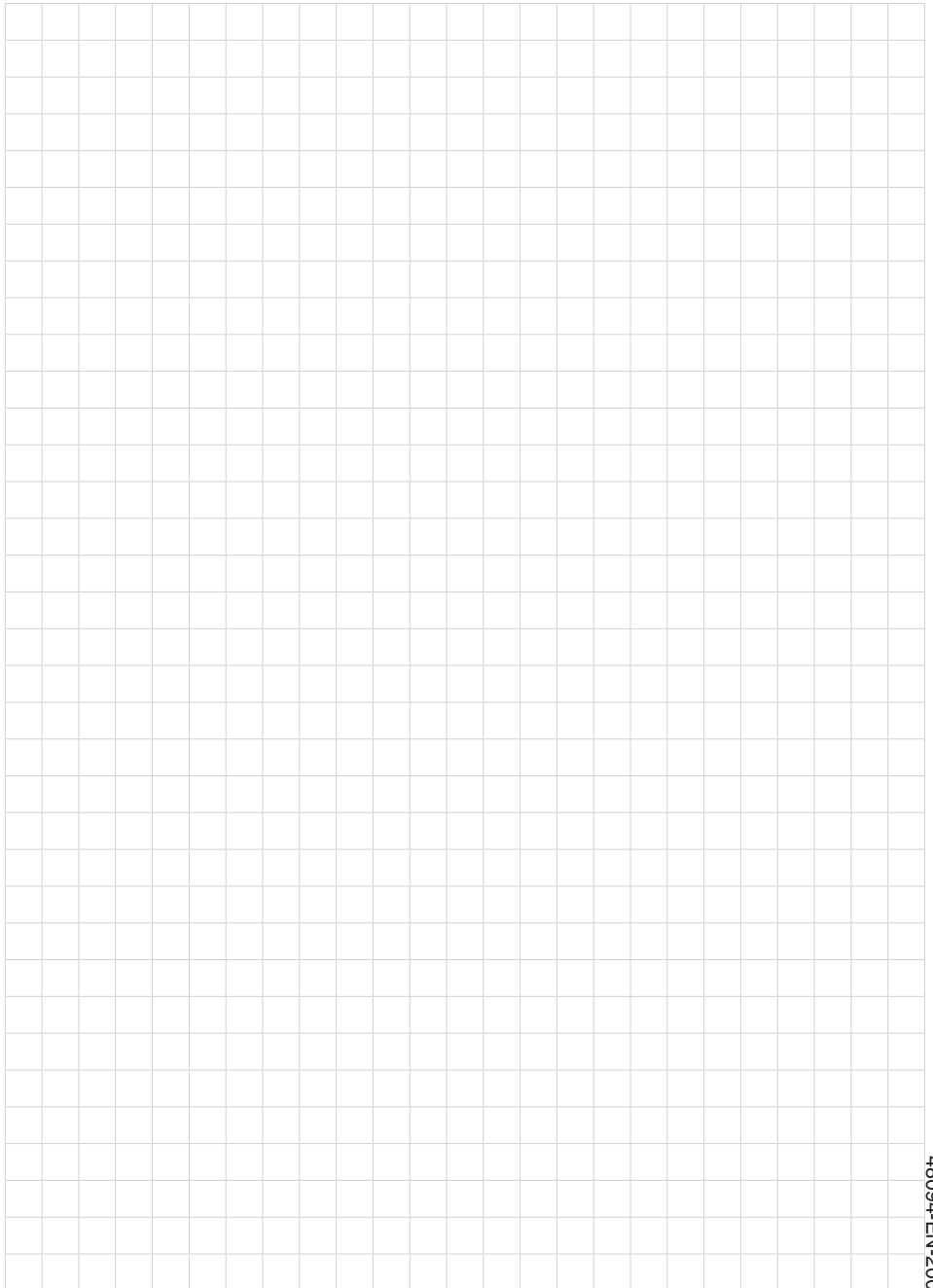


Note:

The cone seals metal/metal or plastic/metal provide a secure sealing when tightened once.

Loosening and retightening reduces the quality of the contact surfaces. Leakage, product leakage and contamination can be the result.







48094-EN-200804

Printing date:

VEGA

All statements concerning scope of delivery, application, practical use and operating conditions of the sensors and processing systems correspond to the information available at the time of printing.

Subject to change without prior notice

© VEGA Grieshaber KG, Schiltach/Germany 2020



48094-EN-200804

VEGA Grieshaber KG
Am Hohenstein 113
77761 Schiltach
Germany

Phone +49 7836 50-0
Fax +49 7836 50-201
E-mail: info.de@vega.com
www.vega.com