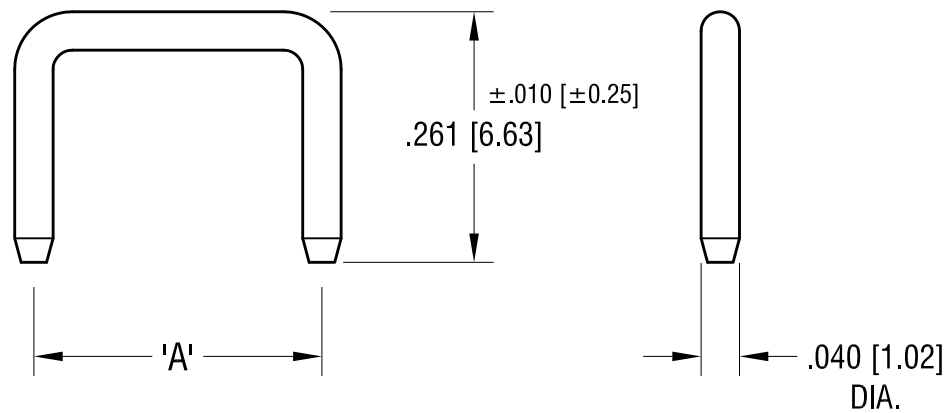


THIS DOCUMENT IS THE PROPERTY OF  
KEYSTONE ELECTRONICS CORP. AND  
SHALL NOT BE REPRODUCED, DISTRIBUTED  
OR USED AS A BASIS FOR MANUFACTURE  
WITHOUT PRIOR WRITTEN PERMISSION  
FROM KEYSTONE ELECTRONICS CORP.

**ACTUAL SIZE**  
**P/N 1430-2**



PART NO.	'A' MTG. CTRS
1430-1	.200 [5.08]
1430-2	.250 [6.35]
1430-3	.300 [7.62]
1430-4	.400 [10.16]
1430-5	.500 [12.70]

<b>KEYSTONE ELECTRONICS CORP.</b>			
www.keyelco.com • ASTORIA, N.Y. 11105-2017 • Tel (718) 956-8900			
PART NAME NON-INSULATED SHORTING PIN			
MATERIAL .040 [1.02] DIA. BRASS			
FINISH GOLD FLASH		DRN BY BOONE	DATE 4.2.07
		APP'D	SCALE 5X
TOLERANCES	INCH [MM]	CODE	DWG NO.
DECIMAL	± .005 [± 0.13]	C	<b>1430-</b>
ANGULAR	± 1°		
UNLESS OTHERWISE SPECIFIED			

12.05.13	CHANGE AS PER ECN 13-108	A
DATE	DESCRIPTION	REV.