

5

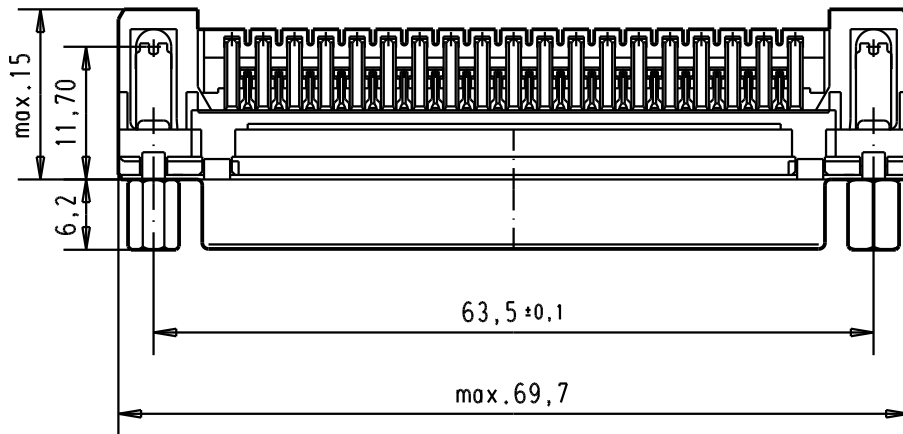
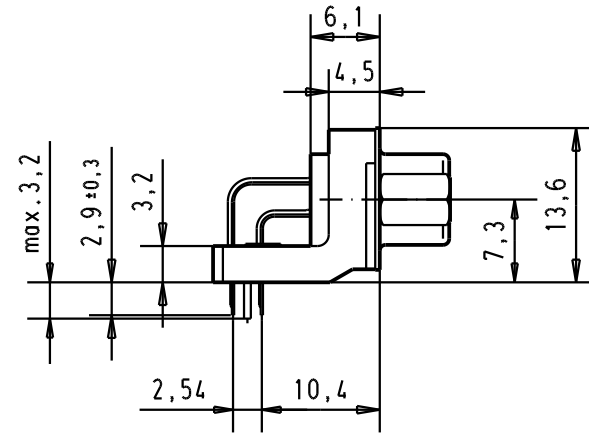
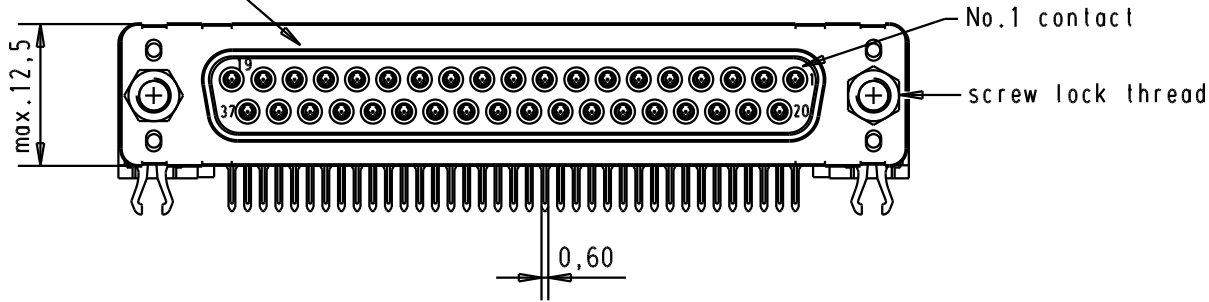
4

3

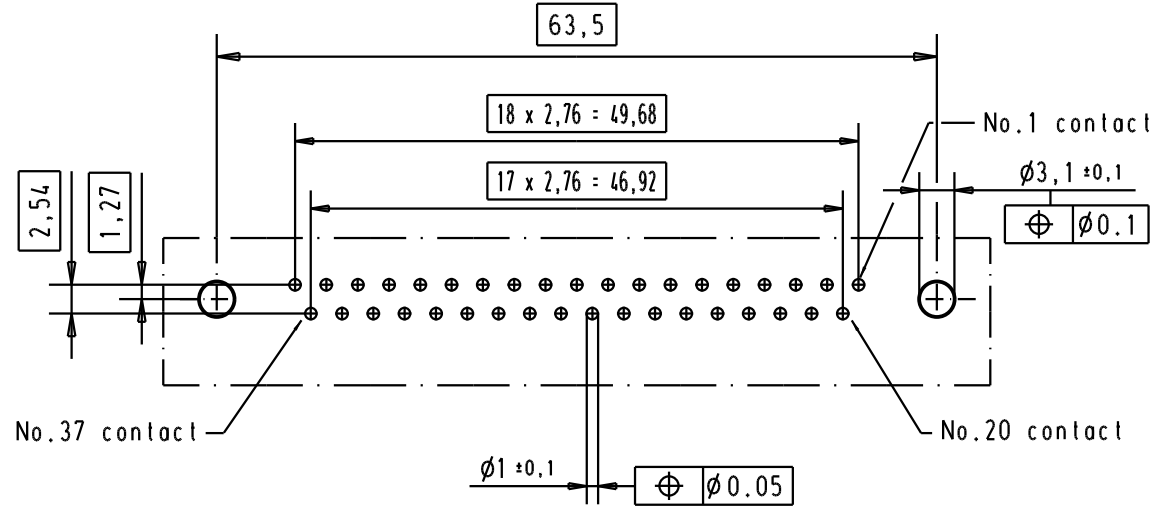
2

1



Mating face according to : MIL-C-24308 / DIN 41652 / CECC 75301-802



PCB layout hole component side



Connector retention and insertion forces on the PCB = 25 / 80 newtons

A	09 66 452 3633	M3	1							 All Dim. in mm Orig. Size DIN A 4	D-Sub 37 poles standard angle female, solder pin with screw lock and grounding board lock.	Maßstab/ Scale 1.5:1		
	09 66 452 6633	M3	2					Det.	04/SEP/02				YT	
	09 66 452 7633	M3	3					Insp.						
	09 66 452 3613	4-40 UNC	1					Stand.						
	09 66 452 6613	4-40 UNC	2	31892	05/05/04	JH	HARTING EUROL F-95972 Paris						TB 0966452x6x3	
	09 66 452 7613	4-40 UNC	3	31084	04/SEP/02	YT								
	Part number	Screw lock thread	Performance level	Mod.	Dat.	Name				Sub.	Blatt/ Page 1 /			

# Mouser Electronics

Authorized Distributor

Click to View Pricing, Inventory, Delivery & Lifecycle Information:

[HARTING:](#)

[09664526613](#) [09664527613](#)