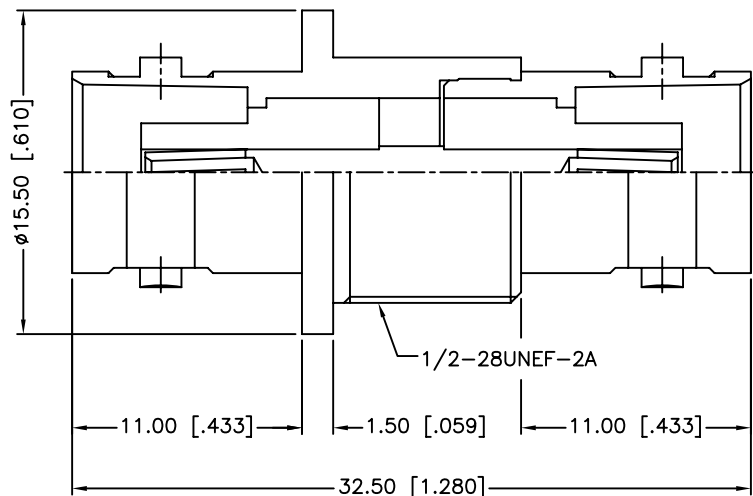
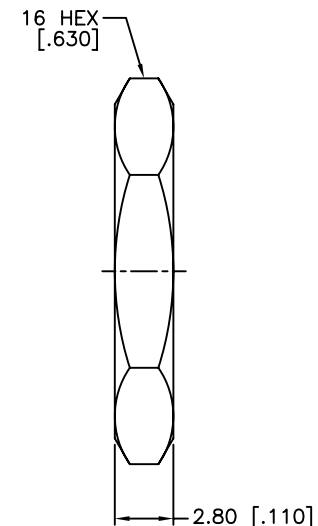
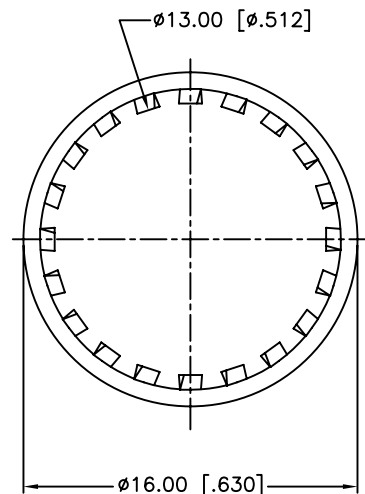


RECOMMENDED MOUNTING HOLE



| REV. | DATE | ECR NO. | DESCRIPTION |
|------|----------|---------|---|
| NC | 05/22/03 | XXXXXX | INITIAL RELEASE |
| A | 08/16/13 | 2515 | CORRECT CENTER CONTACT MATERIAL, UPDATE FORMAT ADD ELECTRICAL/MECHANICAL NOTES |



1. IMPEDANCE: 50 OHM
2. FREQUENCY RANGE: 0-4 GHZ
3. DIELECTRIC WITHSTANDING VOLTAGE: 1500 VRMS, MIN.
4. DURABILITY: 500 CYCLES MIN.
5. TEMPERATURE RANGE: -40°C TO +85°C

| QTY | FINISH | MATERIAL | DESCRIPTION |
|-----|---------|-----------------|-------------|
| 1 | NICKEL | BRASS | HEX NUT |
| 1 | NICKEL | BRASS | LOCK WASHER |
| 1 | GOLD | PHOSPHOR BRONZE | CONTACT PIN |
| 2 | NATURAL | DELTRIN | INSULATOR |
| 1 | NICKEL | BRASS | BODY |
| 1 | NICKEL | BRASS | HOUSING |

UNLESS OTHERWISE SPECIFIED DIMENSIONS ARE IN MILLIMETERS. DIMENSIONS IN [] ARE IN INCHES AND FOR CUSTOMER REFERENCE ONLY.
 UNLESS OTHERWISE SPECIFIED
 TOLERANCES FOR MILLIMETERS ARE:
 <0.5 ± 0.05mm
 0.5 - 6mm ± 0.10mm
 6 - 30mm ± 0.20mm
 30 - 120mm ± 0.30mm
 ANGLES ± 1°
 UNLESS OTHERWISE SPECIFIED
 TOLERANCES FOR INCHES ARE:
 <.020 ± 0.002"
 .020 - .236 ± 0.004"
 .236 - 1.180 ± 0.007"
 1.180 - 4.724 ± 0.012"
 ANGLES ± 1°
 DO NOT SCALE DRAWING

| APPROVALS | DATE |
|---------------|----------------------|
| DRAWN M.ZHANG | 08/16/13 |
| CHECKED | |
| ISSUED | |
| SHEET 1 OF 1 | |
| CAD FILE | C:/CONNEX/112437.DWG |

| | | | |
|--|------------|-------|----|
| Amphenol Connex | | | |
| PART DESCRIPTION | | | |
| BNC FEMALE TO FEMALE BULKHEAD ADAPTER | | | |
| PART NO. | | | |
| 112437 | | | |
| DWG. NO. | 112437.DWG | REV. | A |
| SIZE | A | SCALE | NA |