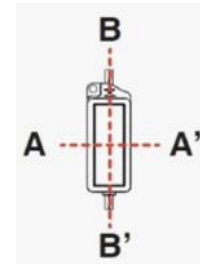
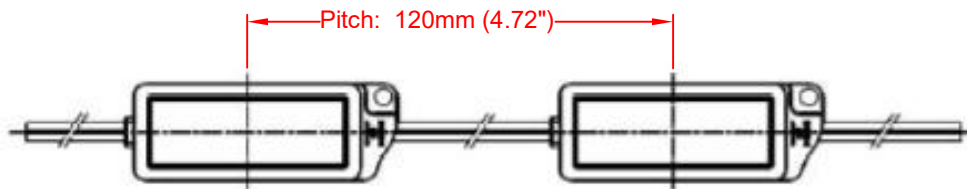
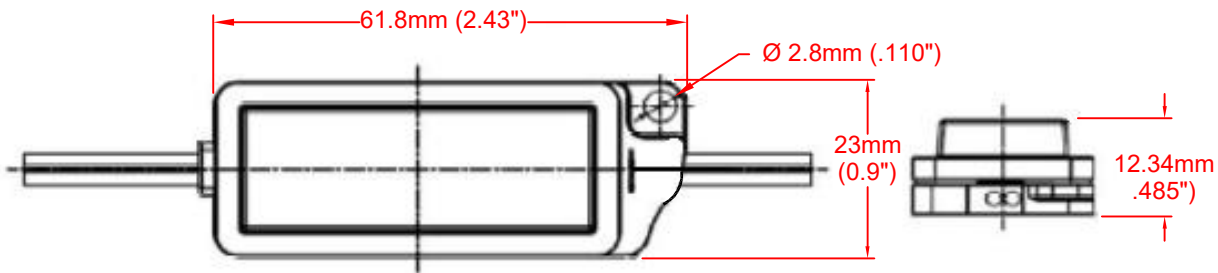


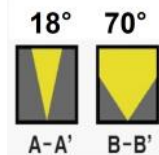
EDGE LIGHT LED SIGN MODULE

Features

- BEAM ANGLE: 18° X 70°
- OSRAM LEDS
- 24V DC OPERATION
- IP67 WATER RESISTANT
- LONG LIFE: 50,000 HOURS TO L70
- 5 YEAR WARRANTY
- STANDARD PACKAGING: 30 MODULES PER STRAND



OPERATING TEMPERATURE: -20~50°C



JKL Part Number	Input Voltage	Wattage per Module	CCT Cool White	Lumen Flux per Module
ZM-6223-CW	24	1.92	6500°K	212 lm



Notes:

- 20W 24V DC POWER SUPPLY = MAX OF 10 MODULES CONNECTED IN SERIES
- 60W 24V DC POWER SUPPLY = MAX OF 30 MODULES CONNECTED IN SERIES

			METRIC THIRD ANGLE PROJECTION		DIMENSIONS ARE IN mm (INCHES) TOLERANCE UNLESS OTHERWISE SPECIFIED 1 PL +/- REF. 2 PL +/- REF. ANGLE +/-		JKL COMPONENTS CORPORATION					
					TITLE		EDGE LIGHT LED SIGN MODULE					
B	CHNG INPUT VOLTS TO 24 ON CHART	10/8/19	DRAWN BY	APPV'D BY	DATE	SIZE	FSCM NO.	DRAWING NO.				
A	ADD CANADIAN-US SYMBOL	9/16/19	L. WENGSTROM	S.N.	10/8/19	A	55335	ZM-6223-CW				
	RELEASED	10/7/18	- CAD DRAWING - MANUAL REVISIONS NOT PERMITTED			SCALE	RELEASED DATE	10/7/18	REVISION DATE	10/8/19	REV. NO. B	SHEET 1 OF 1

Mouser Electronics

Authorized Distributor

Click to View Pricing, Inventory, Delivery & Lifecycle Information:

[JKL Components:](#)

[ZM-6223-CW](#)