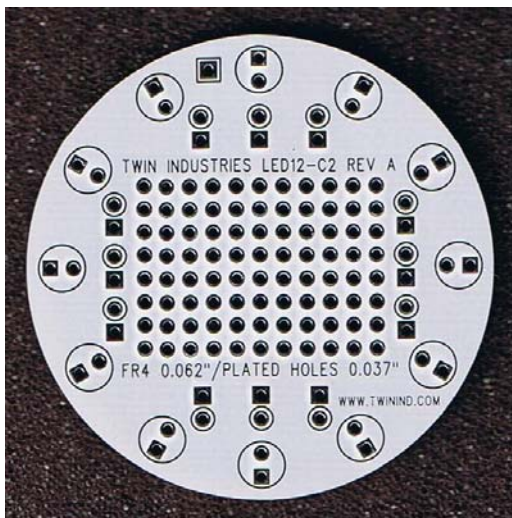




Twin Industries LED-series prototyping boards provide a versatile solution for LED projects. The boards have white soldermask to enhance LED luminosity, common bus power trace, locations for resistors to control individual LEDs, prototyping area for drivers, and locations for other components.

FEATURES:

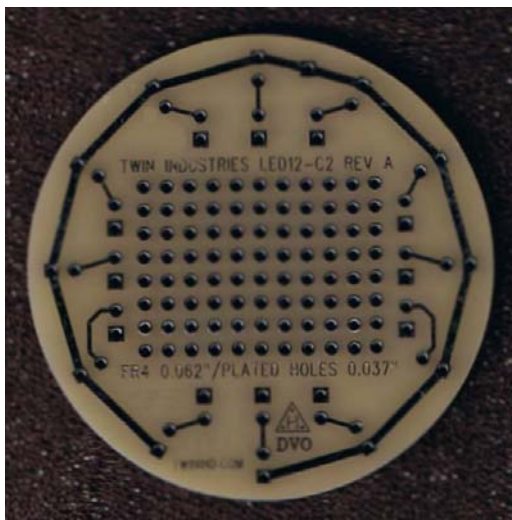
- FR4 laminate, 0.062" thick
- Prototyping holes spaced on a 0.1" x 0.1" grid
- Hole interior diameter = 0.037"
- Plated through holes with pads on both sides of board



PART NUMBER

LED12-C2 (front view)

Board size: 2.0" circle



PART NUMBER

LED12-C2 (rear view)

Board size: 2.0" circle

For additional product information, please visit www.twinind.com

Contact information: 925-866-8946 (phone) 925-866-8947 (fax) Sales@twinind.com

Mouser Electronics

Authorized Distributor

Click to View Pricing, Inventory, Delivery & Lifecycle Information:

[Twin Industries:](#)

[LED12-C2](#)