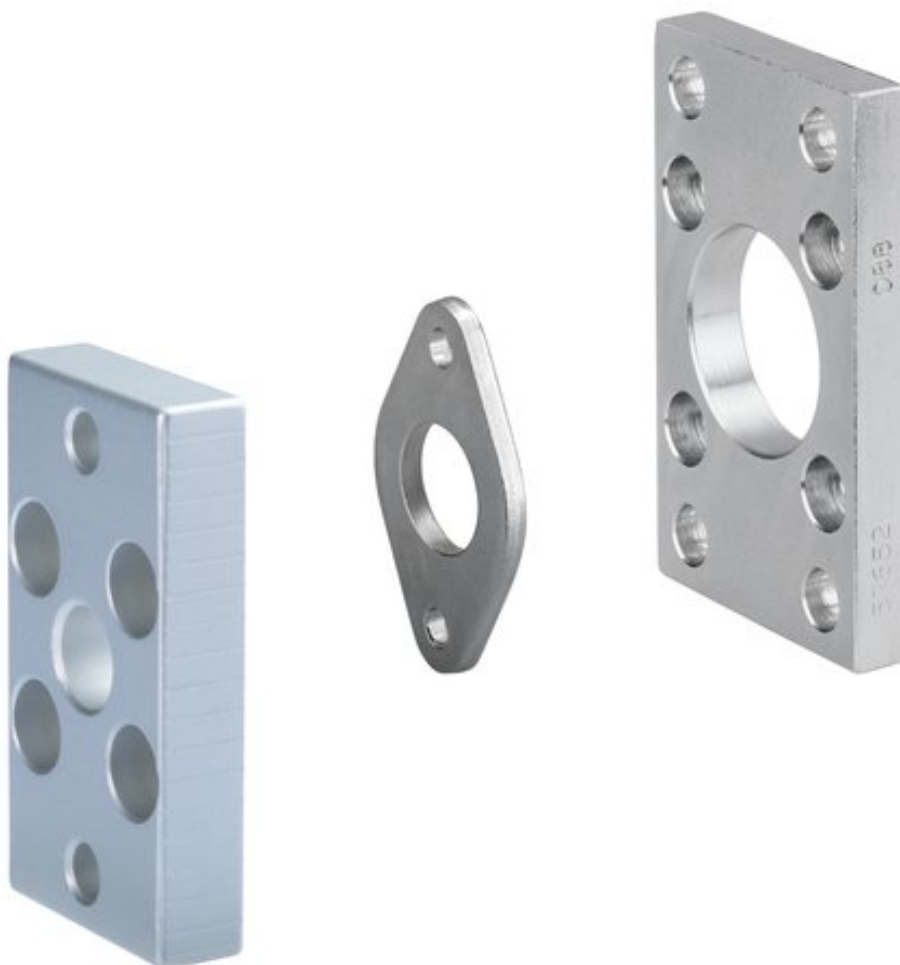


# Flange mountings



AVENTICS™ Flange mountings



# Flange mounting MF1, MF2, Series CM1

- Cylinder mounting in accordance with ISO 15552
- Suitable piston Ø 32 40 50 63 80 100 125 160 200 250 320 mm



Standards

ISO 15552

## Technical data

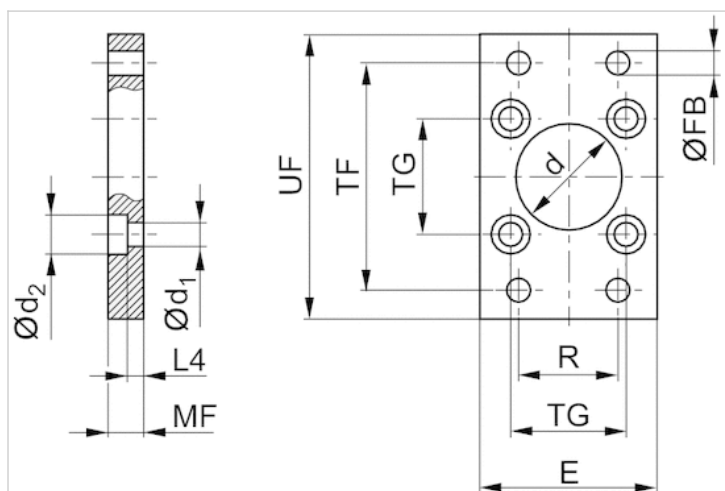
Part No.	Piston Ø	Swivel bearing Ø
1827001277	32 mm	30 mm
1827001278	40 mm	35 mm
1827001279	50 mm	40 mm
1827001499	63 mm	45 mm
1827001281	80 mm	45 mm
1827001282	100 mm	55 mm
1827004861	125 mm	60 mm
1827001460	160 mm	65 mm
1827001461	200 mm	75 mm
1827001462	250 mm	90 mm
5239016012	320 mm	110 mm

Scope of delivery: flange mounting incl. mounting screws

## Technical information

Material	
Material	Steel
	galvanized
Screws	Steel
	galvanized

## Dimensions



## Dimensions

Part No.	Piston Ø	Ød H11	Ød1	Ød2	E max.	ØFB	L4	MF	R	TF	TG	UF
1827001277	32 mm	30	6.6	11	50	7	4.5	10	32	64	32,5 ±0,2	80
1827001278	40 mm	35	6.6	11	55	9	4.5	10	36	72	38 ±0,2	90
1827001279	50 mm	40	9	15	65	9	6	12	45	90	46,5 ±0,2	110
1827001499	63 mm	45	9	15	75	9	6	12	50	100	56,5 ±0,2	125
1827001281	80 mm	45	11	18	100	12	9	16	63	126	72 ±0,2	154
1827001282	100 mm	55	11	18	120	14	9	16	75	150	89 ±0,2	186
1827004861	125 mm	60	14	20	140	16	10.5	20	90	180	110 ±0,3	220
1827001460	160 mm	65	18	26	180	18	9.5	20	115	230	140 ±0,3	275
1827001461	200 mm	75	18	26	220	22	12.5	25	135	270	175 ±0,3	312
1827001462	250 mm	90	22	33	280	26	10.5	25	165	330	220 ±0,3	380
5239016012	320 mm	110	26	40	350	33	15	30	200	270	270 ±0,3	400

# Flange mounting MF1, MF2, Series CM1

- Suitable piston Ø 16 20 25 mm



Weight

See table below

## Technical data

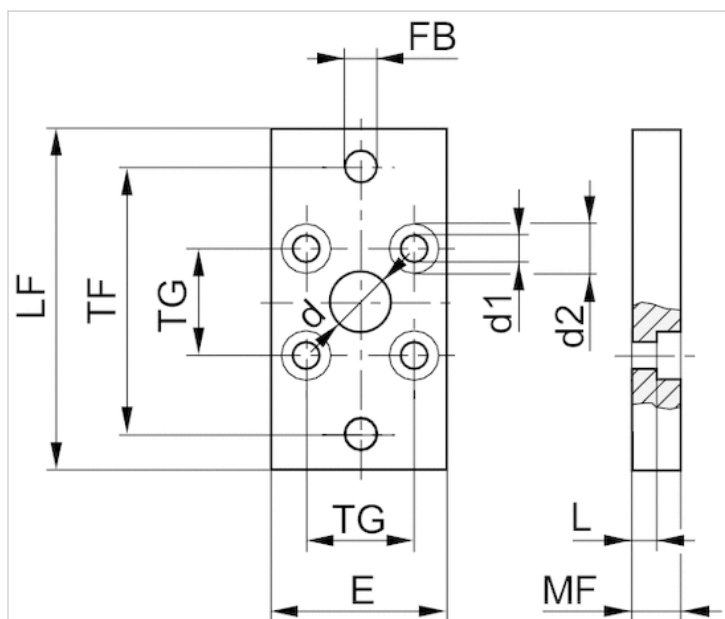
Part No.	Piston Ø	Swivel bearing Ø	Weight
1821038241	16 mm	10 mm	0.05 kg
1827002292	20 mm	12 mm	0.18 kg
1827002293	25 mm	12 mm	0.23 kg

Scope of delivery: flange mounting incl. mounting screws

## Technical information

Material	
Material	Steel
	galvanized

## Dimensions



## Dimensions

Part No.	Piston Ø	Ød H11	Ød1	Ød2	E 1)	ØFB	L4	MF	R	TF	TG	UF
1821038241	16 mm	10	4.5	10	29	5.5	5.6	10	-	43	18	55
1827002292	20 mm	12	5.5	10	36	6.6	4.6	10	-	55	22	70
1827002293	25 mm	12	5.5	10	40	6.6	4.6	10	-	60	26	76

1) Max.

# Flange mounting MF1, MF2, Series CM1

- Suitable piston Ø 32 40 50 63 80 100 mm



Weight

See table below

## Technical data

Part No.	Piston Ø	Weight
1827002294	32 mm	0.23 kg
1827002295	40 mm	0.45 kg
1827002296	50 mm	0.66 kg
1827002297	63 mm	1.27 kg
1827002298	80 mm	1.9 kg
1827002299	100 mm	2.7 kg

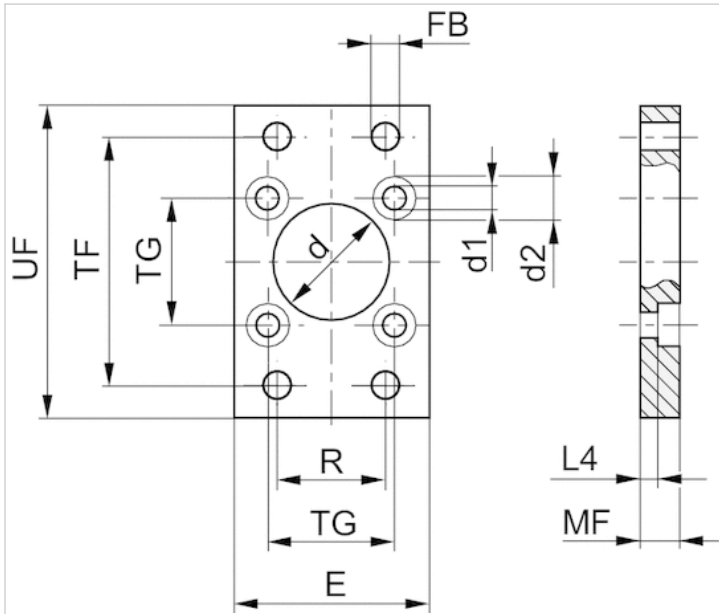
Scope of delivery: flange mounting incl. mounting screws

## Technical information

Material	
Material	Steel
	galvanized
Screws	Steel
	galvanized

## Dimensions

### Dimensions



## Dimensions

Part No.	Piston Ø	Ød H11	Ød1	Ød2	E 1)	ØFB	L4	MF	R	TF	TG	UF
1827002294	32 mm	14	6.6	11	50	7	3.6	10	32	65	32	80
1827002295	40 mm	14	6.6	11	60	9	3.6	10	36	82	42	102
1827002296	50 mm	18	9	15	66	9	3.4	12	45	90	50	110
1827002297	63 mm	18	9	15	87	9	6.4	15	50	110	62	130
1827002298	80 mm	23	11	18	107	12	4.4	15	63	135	82	160
1827002299	100 mm	28	11	18	128	14	4.4	15	75	163	103	190

1) Max.

# Flange mounting MF8, Series CM1

- Cylinder mounting in accordance with ISO 6432

- Suitable piston Ø 8, 10 12, 16 20, 25 mm



Standards

ISO 6432

## Technical data

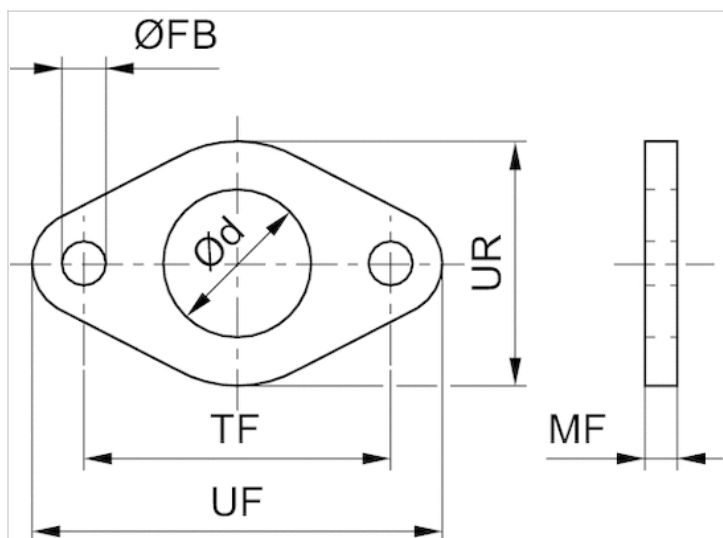
Part No.	Piston Ø	Housing material	Surface
1821036012	8, 10 mm	Steel	galvanized
1821036011	12, 16 mm	Steel	galvanized
1821036010	20, 25 mm	Steel	galvanized
3322010000	8, 10 mm	Stainless steel	-
3322016000	12, 16 mm	Stainless steel	-
3322020000	20, 25 mm	Stainless steel	-

## Technical information

Material	
Material	Steel Stainless steel
	galvanized



## Dimensions



## Dimensions

Part No.	Piston $\varnothing$	$\varnothing d$	$\varnothing FB$	MF	TF js14	UF	UR
1821036012	8, 10 mm	12	4.5	3	30	40	25
1821036011	12, 16 mm	16	5.5	4	40	52	30
1821036010	20, 25 mm	22	6.6	5	50	66	40
3322010000	8, 10 mm	12	4.5	3	30	40	22
3322016000	12, 16 mm	16	5.5	4	40	52	30
3322020000	20, 25 mm	22	6.6	5	50	66	40

# Efficient pneumatic solutions, our program: cylinders and drives, valves and valve systems, air supply management



Visit us: [Emerson.com/Aventics](https://www.emerson.com/aventics)

Your local contact: [Emerson.com/contactus](https://www.emerson.com/contactus)



Emerson.com



[Facebook.com/EmersonAutomationSolutions](https://www.facebook.com/EmersonAutomationSolutions)



[LinkedIn.com/company/Emerson-Automation-Solutions](https://www.linkedin.com/company/Emerson-Automation-Solutions)



[Twitter.com/EMR\\_Automation](https://twitter.com/EMR_Automation)

An example configuration is depicted on the title page. The delivered product may thus vary from that in the illustration. Subject to change. This Document, as well as the data, specifications and other information set forth in it, are the exclusive property of AVENTICS GmbH. It may not be reproduced or given to third parties without its consent. Only use the AVENTICS products shown in industrial applications. Read the product documentation completely and carefully before using the product. Observe the applicable regulations and laws of the respective country. When integrating the product into applications, note the system manufacturer's specifications for safe use of the product. The data specified only serve to describe the product. No statements concerning a certain condition or suitability for a certain application can be derived from our information. The information given does not release the user from the obligation of own judgment and verification. It must be remembered that the products are subject to a natural process of wear and aging.

The Emerson logo is a trademark and service mark of Emerson Electric Co. Brand logotype are registered trademarks of one of the Emerson family of companies. All other marks are the property of their respective owners. © 2017 Emerson Electric Co. All rights reserved.  
2019-03



**CONSIDER IT SOLVED™**