

GJM1555C1HR50WB01#

“#” indicates a package specification code.



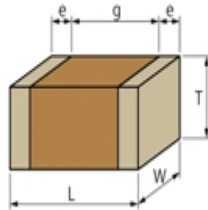
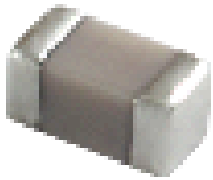
< List of part numbers with package codes >

GJM1555C1HR50WB01J

GJM1555C1HR50WB01W

GJM1555C1HR50WB01D

Appearance & Shape



References

| Packaging | Specifications | Standard Packing Quantity |
|-----------|-------------------------|---------------------------|
| J | 330mm Paper Tape | 50000 |
| W | 180mm Paper Tape (W8P1) | 20000 |
| D | 180mm Paper Tape | 10000 |


| Mass (typ.) | |
|-------------|-------|
| 1 piece | 1.6mg |
| φ180mm Reel | 118g |

Attention

- 1.This datasheet is downloaded from the website of Murata Manufacturing Co., Ltd. Therefore, it's specifications are subject to change or our products in it may be discontinued without advance notice. Please check with our sales representatives or product engineers before ordering.
- 2.This datasheet has only typical specifications because there is no space for detailed specifications.
Therefore, please review our product specifications or consult the approval sheet for product specifications before ordering.

GJM1555C1HR50WB01#

“#” indicates a package specification code.



Specifications

| | |
|--|----------------|
| Length | 1.0±0.05mm |
| Width | 0.5±0.05mm |
| Thickness | 0.5±0.05mm |
| Capacitance | 0.50pF ±0.05pF |
| Distance between external terminals g | 0.3mm min. |
| External terminal size e | 0.15 to 0.35mm |
| Operating Temperature Range | -55°C to 125°C |
| Rated Voltage | 50Vdc |
| Size code in inch(mm) | 0402 (1005M) |
| TC | 0±30ppm/°C |
| Temperature characteristics (complied standard) | C0G(EIA) |
| Temperature range of temperature characteristics | 25°C to 125°C |

Attention

- 1.This datasheet is downloaded from the website of Murata Manufacturing Co., Ltd. Therefore, it's specifications are subject to change or our products in it may be discontinued without advance notice. Please check with our sales representatives or product engineers before ordering.
- 2.This datasheet has only typical specifications because there is no space for detailed specifications. Therefore, please review our product specifications or consult the approval sheet for product specifications before ordering.

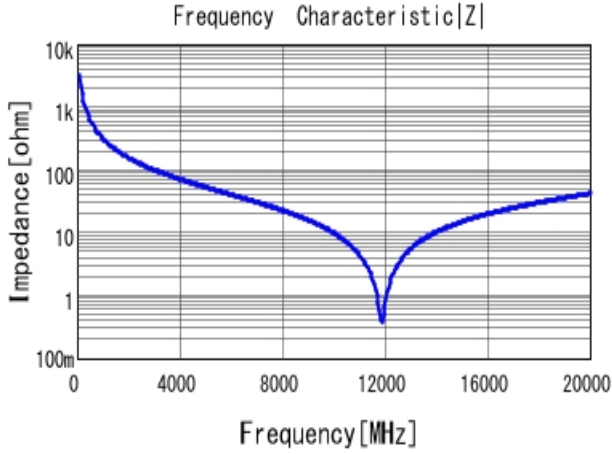
GJM1555C1HR50WB01#

"#" indicates a package specification code.

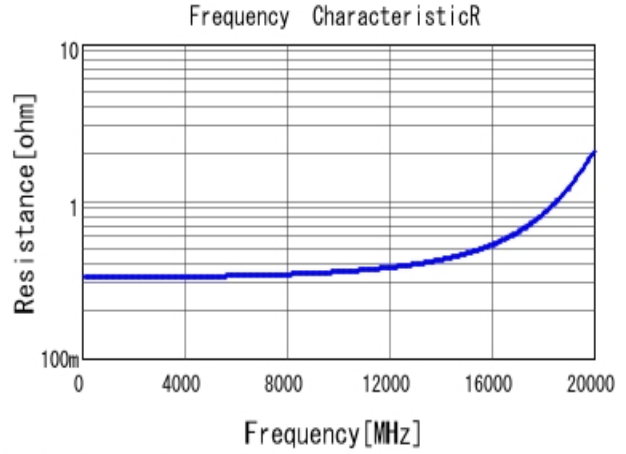


Characteristic Data

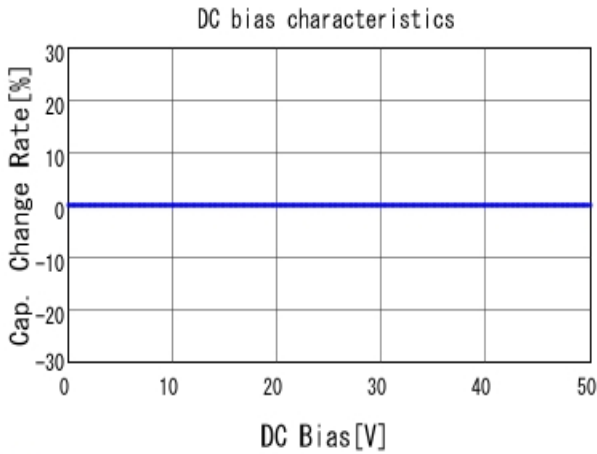
The charts below may show another part number which shares its characteristics.



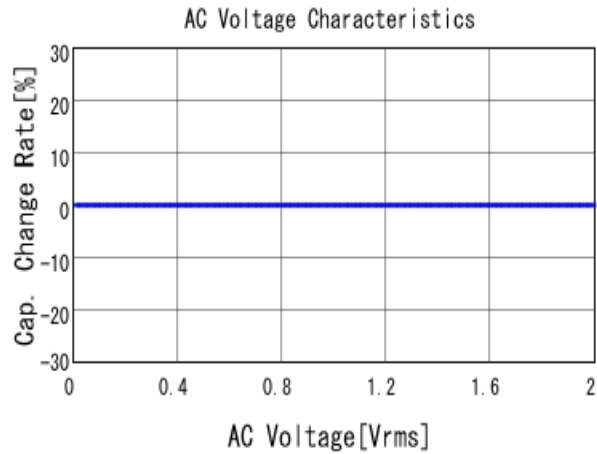
GJM1555C1HR50WB01 |Z| DC0V, 25degC



GJM1555C1HR50WB01 R DC0V, 25degC



GJM1555C1HR50WB01 C-DC bias capchange, 25.0degC, AC1V



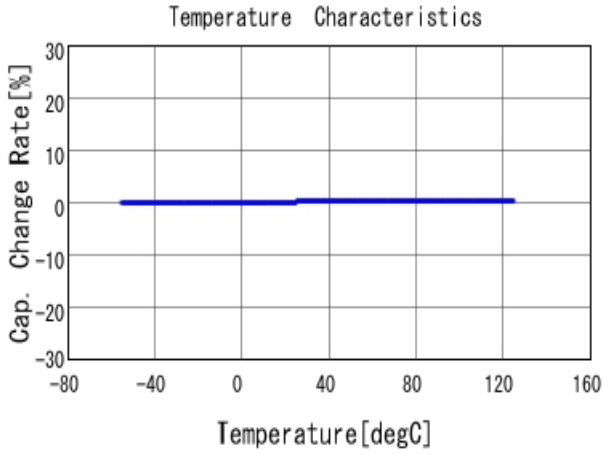
GJM1555C1HR50WB01 C-AC Voltage capchange, DC0V, 25.0d

Attention

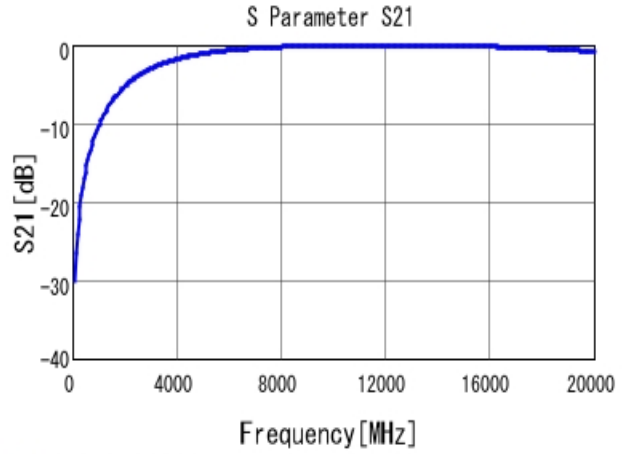
- 1.This datasheet is downloaded from the website of Murata Manufacturing Co., Ltd. Therefore, it's specifications are subject to change or our products in it may be discontinued without advance notice. Please check with our sales representatives or product engineers before ordering.
- 2.This datasheet has only typical specifications because there is no space for detailed specifications. Therefore, please review our product specifications or consult the approval sheet for product specifications before ordering.

GJM1555C1HR50WB01#

“#” indicates a package specification code.



■ GJM1555C1HR50WB01 C-Temp. capchange, DCOV, AC1Vrms



■ GJM1555C1HR50WB01 S21 DCOV, 25degC

Attention

- 1.This datasheet is downloaded from the website of Murata Manufacturing Co., Ltd. Therefore, it's specifications are subject to change or our products in it may be discontinued without advance notice. Please check with our sales representatives or product engineers before ordering.
- 2.This datasheet has only typical specifications because there is no space for detailed specifications. Therefore, please review our product specifications or consult the approval sheet for product specifications before ordering.