

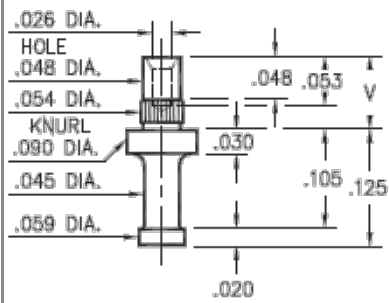


PRODUCT NUMBER: 2333-2-00-01-00-00-07-0

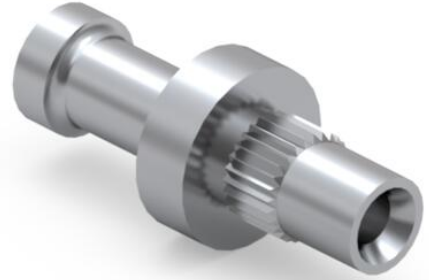
www.mill-max.com
DATA SHEET

2333-X-00-XX-00-00-07-0

Press-fit & swage in .052 mounting hole



| Basic Part Number | Board Thickness | Length V |
|-------------------|-----------------|----------|
| 2333-1 | .078 | .103 |
| 2333-2 | .062 | .087 |
| 2333-3 | .047 | .072 |



2333-2-00-01-00-00-07-0 SPECIFICATIONS

| General Info | |
|---------------------------------------|--|
| Description¹: | Turret Terminal Pin |
| Mounting Feature: | Press-Fit into a Non-Plated Through Hole (NPTH) or Insulator |
| Mounting Hole: | .052" (1,321mm) |
| Packaging: | Packaged in Bulk |
| RoHS: | No |
| Product Lifecycle²: | Active |

| Materials | |
|------------------------------------|-----------------------------------|
| Shell Material³: | Brass Alloy |
| Shell Plating⁴: | 200 - 300 μ" Tin/Lead over Nickel |

| Technical Specs | |
|---|----------------------|
| Operating Temperature Range⁵: | - 55/+125° C |
| Current Rating⁶: | Application Specific |

NOTES:

1. Standard Tolerances:
Lengths +/- .005" (0,13)
Diameters: +/- .002" (0,051)
Angles: +/- 2°
2. Part is Active and in Production, No Scheduled Obsolescence
3. Brass Alloy 360 per ASTM B 16, or 385 per ASTM B455
4. TIN/LEAD (93/7) per ASTM B 545 (Appendix X6.3.2.5 to eliminate whisker growth) Bright finish; NICKEL per ASTM B 689, Type 2 (Bright)
5. Per IEC 60512-11-(4,-9,-10,-12)
6. Current rating is typically a measured function of the female socket/connector. The amount of current a solid, male, brass pin can tolerate is a direct relation of the heat displaced based on current and the ability of neighboring components to handle displaced heat.

ADDITIONAL NOTES AND SPECIFICATIONS

In the interest of improved design, quality and performance , Mill-Max reserves the right to make changes in its specifications without prior notice. Specifications and tolerances are provided wherever possible. The tolerance on dimensions of critical to function features is typically held tighter than the stated standard tolerances, such as press-fits, holes and lengths affecting the coplanarity of SMT products. Due to the wide variety of interconnects Mill-Max offers, the specific tolerances vary from product to product. If you need information regarding the tolerance of a particular part, please contact Technical Services.

RELATED LINKS AND DOCUMENTS

Engineering Notebook: (<https://www.mill-max.com/engineering-notebooks/introduction-to-swage-assembly>)

Environmental Compliance: (<https://www.mill-max.com/rohs>)