

## Han 40A axial module, female 6-10 mm<sup>2</sup>

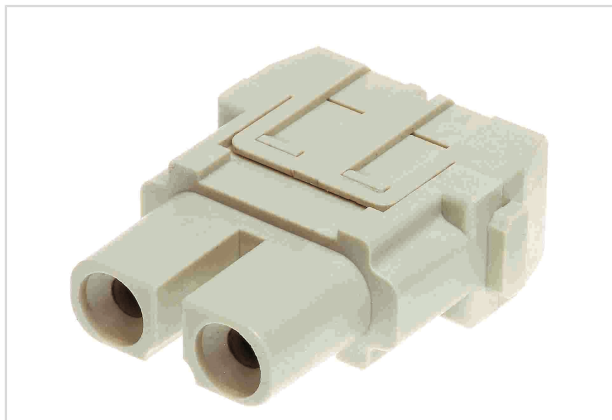


Image is for illustration purposes only. Please refer to product description.

Part number	09 14 002 2702
Specification	Han 40A axial module, female 6-10 mm <sup>2</sup>
HARTING eCatalogue	<a href="https://b2b.harting.com/09140022702">https://b2b.harting.com/09140022702</a>

### Identification

Category	Modules
Series	Han-Modular®
Type of module	Han® 40 A module

### Version

Termination method	Axial screw termination
Gender	Female
Number of contacts	2

### Technical characteristics

Conductor cross-section	6 ... 10 mm <sup>2</sup>
Rated current	40 A
Rated voltage	1,000 V
Rated impulse voltage	8 kV
Pollution degree	3
Rated voltage acc. to UL	600 V
Insulation resistance	>10 <sup>10</sup> Ω
Contact resistance	≤0.3 mΩ
Stripping length	8 mm @ 6 mm <sup>2</sup> 11 mm @ 10 mm <sup>2</sup>
Tightening torque	2 Nm @ 6 mm <sup>2</sup> 2 Nm @ 10 mm <sup>2</sup>
Limiting temperature	-40 ... +125 °C



Pushing Performance

## Technical characteristics

Mating cycles  $\geq 500$

## Material properties

Material (insert)	Polycarbonate (PC)
Colour (insert)	RAL 7032 (pebble grey)
Material (contacts)	Copper alloy
Surface (contacts)	Silver plated
Material flammability class acc. to UL 94	V-0
RoHS	compliant with exemption
RoHS exemptions	6(c): Copper alloy containing up to 4 % lead by weight
ELV status	compliant with exemption
China RoHS	50
REACH Annex XVII substances	No
REACH ANNEX XIV substances	No
REACH SVHC substances	Yes
REACH SVHC substances	Lead

## Specifications and approvals

Specifications	EN 60664-1 IEC 61984
Approvals	DNV GL
UL / CSA	UL 1977 ECBT2.E235076 CSA-C22.2 No. 182.3 ECBT8.E235076 UL 2237 PVVA2.E318390 CSA-C22.2 No. 182.3 PVVA8.E318390

## Commercial data

Packaging size	2
Net weight	24.2 g
Country of origin	Germany
European customs tariff number	85366990
eCl@ss	27440217 Module for industrial connectors (power/signals)

# Mouser Electronics

Authorized Distributor

Click to View Pricing, Inventory, Delivery & Lifecycle Information:

[HARTING:](#)

[09140022702](#)