

THIS DRAWING IS UNPUBLISHED.

RELEASED FOR PUBLICATION

ALL RIGHTS RESERVED.

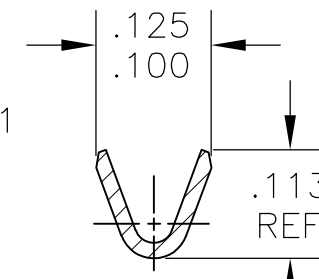
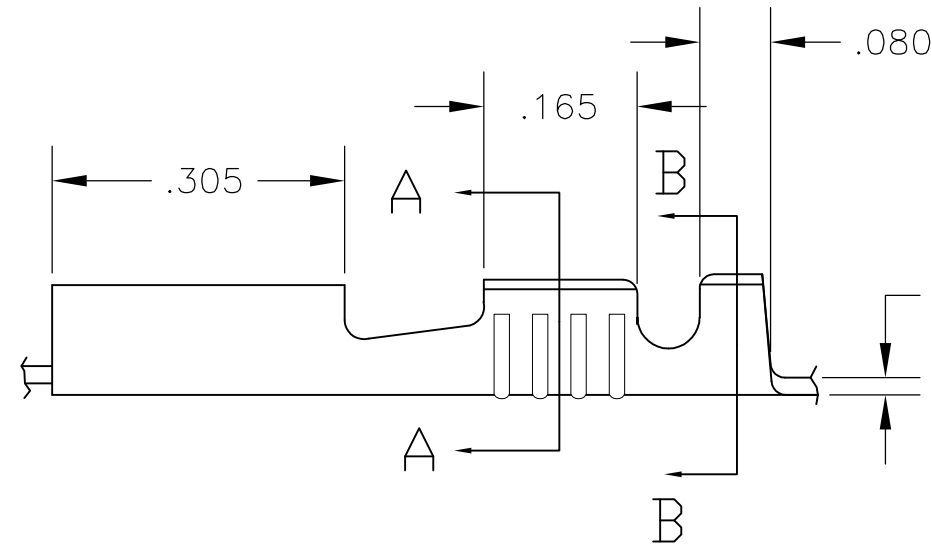
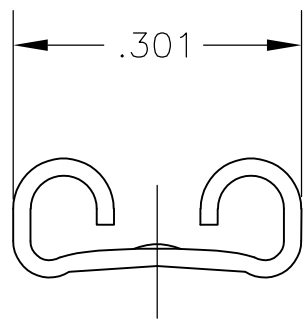
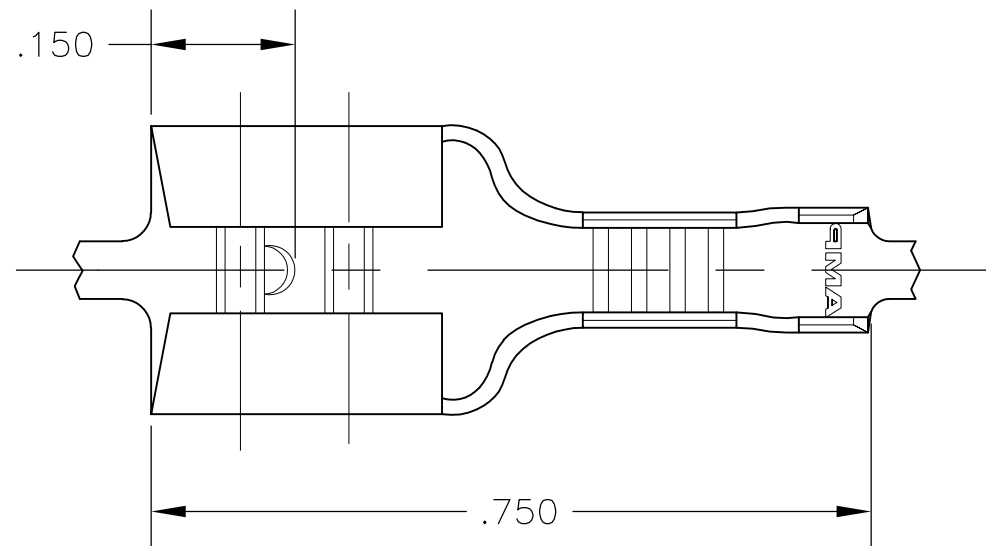
© COPYRIGHT - By -

LOC AF DIST 50

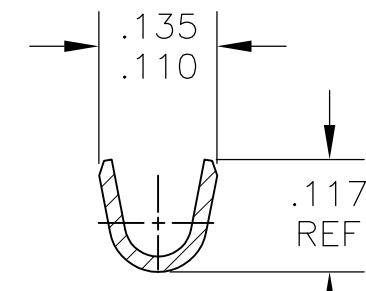
REVISIONS

| P | LTR | DESCRIPTION | DATE | DWN | APVD |
|----|-----|---------------------------|---------|-----|------|
| F1 | | REVISED PER ECO-11-004917 | 11MAR11 | RK | HMR |

- 1 CONTINUOUS STRIP ON REELS
- 2 WIRE SIZE IS 22-18 AWG
- 3 INSULATION RANGE IS .060-.100 DIA
- 4 FEED IS .840±.005
- 5 MATING TAB THK IS .032±.001



SECTION A-A



SECTION B-B

| | |
|-----------------------|---------|
| .000080 MIN TIN PLATE | 42640-2 |
| - | 42640-1 |
| FINISH | PART NO |

THIS DRAWING IS A CONTROLLED DOCUMENT.

DWN jr_ruth 13JAN2004

CHK P_DESANTIS 13JAN04

APVD P_DESANTIS 13JAN04

PRODUCT SPEC

APPLICATION SPEC

WEIGHT -

STE TE Connectivity

NAME RECEPTACLE, FASTON, .250 SERIES

SIZE A3 CAGE CODE 00779 DRAWING NO C-42640 RESTRICTED TO -

| DIMENSIONS: INCHES | TOLERANCES UNLESS OTHERWISE SPECIFIED: |
|-----------------------|---|
| 0 PLC | ± - |
| 1 PLC | ± - |
| 2 PLC | ± - |
| 3 PLC | ± .015 |
| 4 PLC | ± - |
| ANGLES | ± - |

MATERIAL H04 BRASS

FINISH SEE TABLE

CUSTOMER DRAWING SCALE 5:1 SHEET 1 OF 1 REV F1