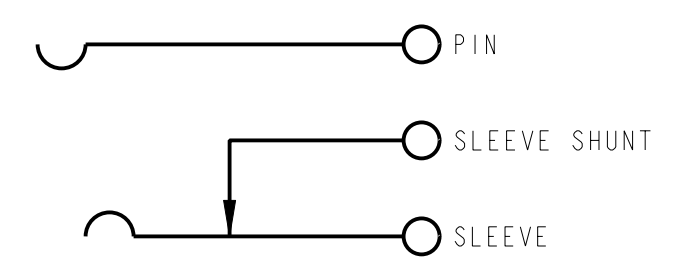
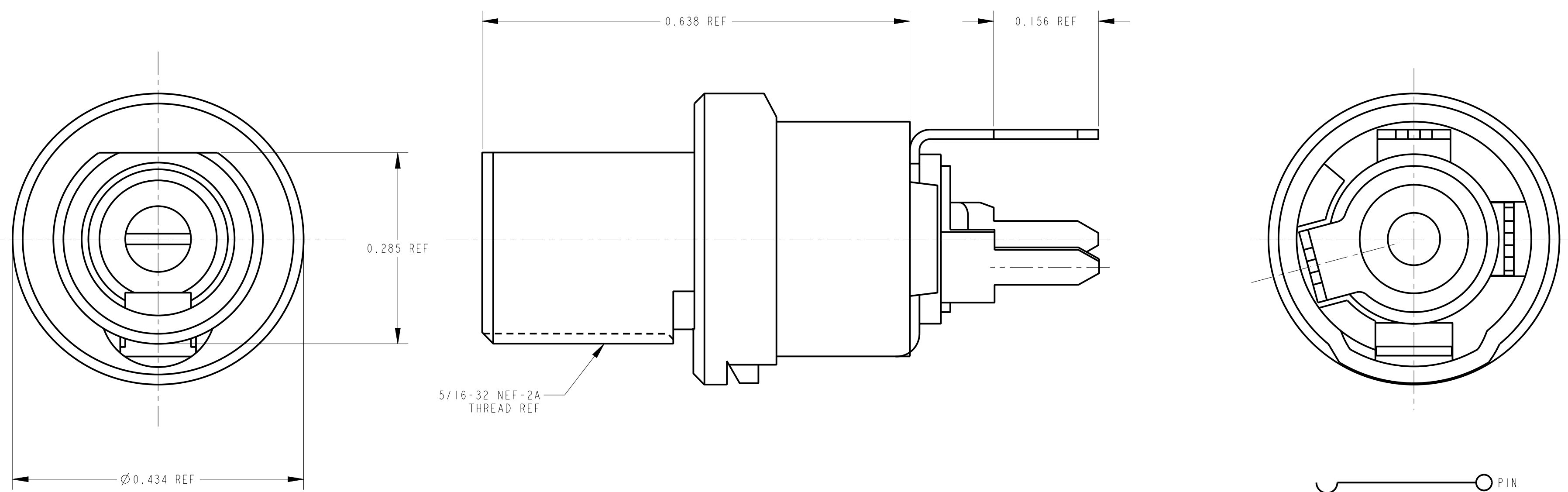


- MATERIALS**
- BUSHING - COPPER ALLOY, NICKEL PLATED
  - PIN TERMINALS - COPPER ALLOY, SILVER PLATED
  - WASHERS - GLASS EPOXY
  - PIN - COPPER ALLOY, SILVER PLATED
  - HOUSING - BLACK THERMOPLASTIC, UL94V-0
  - SLEEVE SHUNT - PHOS. BRONZE, SILVER PLATED



CUSTOMER DRAWING

★ STAR SYMBOL DENOTES CRITICAL DIMENSION UNLESS OTHERWISE SPECIFIED 1. ALL DIMENSIONS IN INCHES - TWO PLACE DECIMALS ±0.01 - THREE PLACE DECIMALS ±0.005 - ANGLES ±1° - ALL DIA. CONCENTRIC WITHIN 0.005 T.I.R. 2. FEATURES ON THE SAME CENTERLINE MUST BE ALIGNED WITHIN ±0.002 3. REMOVE ALL BURRS					THIS DRAWING DESCRIBES A DESIGN CONSIDERED PROPRIETARY IN NATURE, DEVELOPED AND MANUFACTURED BY SWITCHCRAFT INC. AND IS RELEASED ON A CONFIDENTIAL BASIS FOR IDENTIFICATION PURPOSES ONLY.				
					SIZE	WIDTH	MULT	LBS/M	TEMPER
DATE DRAWN		BY	CHKD	APVD	DRAWING SCALE				
10-7-93		ES	ES	TAO	11-11-93				
NAME					PART No.				
POWER JAX					PCL712A				
REVISIONS					REV G				
REV	ECO NUMBER	DATE	BY	APVD					
G	22992	9-1-99	JL	DK					



# Mouser Electronics

Authorized Distributor

Click to View Pricing, Inventory, Delivery & Lifecycle Information:

[Switchcraft:](#)

[PCL712A](#)