



General Catalog

# Hot air and plastic welding equipment



simple.  
good.  
affordable.



**WELDY**

Hot-air hand tools  
Accessories



4 – 33  
34 - 35

Flat and pitched roofs



36 – 41

Technical textiles and  
industrial fabrics



42 – 51

Civil Engineering / GEO



52 – 57

Plastic Fabrication



58 – 63



Visit our YouTube channel:  
[youtube.com/WELDY](https://www.youtube.com/WELDY)









# Hot-air hand tools

---

Field of activity and applications	6 / 9
energy HT1600	10 / 11
energy HT1600 D	12 / 13
energy HT3400	14 / 15
pic	16 / 17
pro	18 / 19
plus-S	20 / 21
HG 210-B	22 / 23
HG 330-B	24 / 25
HG 330-S	26 / 27
HG 330-A	28 / 29
HG 530-S	30 / 31
HG 530-A	32 / 33
Accessories	34 / 35

## Field of activity and applications




						
	energy HT1600	energy HT1600 D	energy HT3400	pic	pro	plus-S
<b>Field of activity</b>						
<b>Building sites</b> (outdoor)	✓	✓	✓			
<b>Industry</b> (indoor, continuous use)	✓	✓	✓	(✓)	(✓)	(✓)
<b>House &amp; garden</b> (indoor, short-term use)	✓	✓	✓	✓	✓	✓
<b>Applications</b>						
<b>Welding</b> Roofing membranes, protective and sealing foils (overlap welding), plastic containers & joints (pull welding), repairing bumpers	***	***			*	**
<b>Soldering</b> Copper piping, soldering copper sheet seams, soft soldering, desoldering electrical contact points	**	***	**	*	**	***
<b>Drying</b> Drying, dehumidifying, hardening (adhesive and putty, paint)	***	***	***	***	***	***
<b>Lifting / Removing</b> Lifting or removing protective, decorative or special membranes on a range of surfaces	*	*	**	**	***	***
<b>Heating, activating</b> Lighting / stoking barbecue charcoal, warming/heating (defrosting) objects, activating special adhesive (gluing wooden edges, dressing leather), loosening blocked screws / clamps	**	**	***	**	**	***
Catalog page	 10 / 11	12 / 13	14 / 15	16 / 17	18 / 19	20 / 21

						
	energy HT1600	energy HT1600 D	energy HT3400	pic	pro	plus-S
<b>Applications</b>						
<b>Cleaning</b> Paint, plastics, joint sealants, softening/ removing adhesive, heating and removing adhesive film and textiles, burning weeds	**	**	***	**	**	***
<b>Smoothing</b> Smoothing / stretching leather goods by warming the entire surface	**	***	***	*	**	***
<b>Deforming</b> Shaping / deforming plastic profiles (pipes, plates, etc.)	**	**	***	**	**	***
<b>Shrinking</b> Shrinking shrink tubes and solder sleeves, shrinking hoses, shrink wrap- ping objects with packaging film	***	***	***	***	***	***
<b>Melting</b> Heating / liquefying bitumen roof repairs, renovate / repair cracks and scratches in plastic, fasten textile yarns and rope endings	**	**	***	**	**	***
Catalog page 	10 / 11	12 / 13	14 / 15	16 / 17	18 / 19	20 / 21

## Field of activity and applications

						
	HG 210-B	HG 330-B	HG 330-S	HG 330-A	HG 530-S	HG 530-A
<b>Field of activity</b>						
<b>Building sites</b> (outdoor)						
<b>Industry</b> (indoor, continuous use)	✓	✓	✓	✓	✓	✓
<b>House &amp; garden</b> (indoor, short-term use)	✓	✓	✓	✓	✓	✓
<b>Applications</b>						
<b>Welding</b> Roofing membranes, protective and sealing foils (overlap welding), plastic containers & joints (pull welding), repairing bumpers			*	**	*	**
<b>Soldering</b> Copper piping, soldering copper sheet seams, soft soldering, desoldering electrical contact points	*	*	**	***	**	***
<b>Drying</b> Drying, dehumidifying, hardening (adhesive and putty, paint)	***	***	***	***	***	***
<b>Lifting / Removing</b> Lifting or removing protective, decorative or special membranes on a range of surfaces	**	**	***	***	***	***
<b>Heating, activating</b> Lighting / stoking barbecue charcoal, warming/heating (defrosting) objects, activating special adhesive (gluing wooden edges, dressing leather), loosening blocked screws / clamps	**	**	**	***	**	***
Catalog page	 22 / 23	24 / 25	26 / 27	28 / 29	30 / 31	32 / 33



						
	HG 210-B	HG 330-B	HG 330-S	HG 330-A	HG 530-S	HG 530-A
<b>Applications</b>						
<b>Cleaning</b> Paint, plastics, joint sealants, softening/ removing adhesive, heating and removing adhesive film and textiles, burning weeds	**	**	**	***	**	***
<b>Smoothing</b> Smoothing / stretching leather goods by warming the entire surface	*	*	**	***	**	***
<b>Deforming</b> Shaping / deforming plastic profiles (pipes, plates, etc.)	**	**	**	***	**	***
<b>Shrinking</b> Shrinking shrink tubes and solder sleeves, shrinking hoses, shrink wrap- ping objects with packaging film	***	***	***	***	***	***
<b>Melting</b> Heating / liquefying bitumen roof repairs, renovate / repair cracks and scratches in plastic, fasten textile yarns and rope endings	**	**	**	***	**	***
Catalog page 	22 / 23	24 / 25	26 / 27	28 / 29	30 / 31	32 / 33

# energy HT1600: the hot-air hand tool that can be used anywhere

The energy HT1600 is a compact, high-performance hot-air hand tool suitable for a wide range of professional applications. This tool is a firm favorite thanks to its modern design, solid performance and unbeatable value.

Hot-air hand tool

## energy HT1600

- Variable temperature control up to 700°C
- Ceramic heating element
- Robust brush motor
- Ergonomic handle
- Dust filter

### Technical data

Voltage	V~	120	230
Max. power	W	1600	1600
Temperature	°C	40 - 700	
Air volume (20°)	l/min	240	
Dimensions L × W (Ø handle)	mm	346 × 101 (59)	
Nozzle seat Ø	mm	31.5	
Weight	kg	1.0	
Conformity marking		CE	
Protection class II		□	

### Delivery contents

Hand tool, one set replacement carbon brushes, instruction manual, cardboard tool packaging

### Article no.

energy HT1600, 230 V / 1600 W, CN plug	148.003
energy HT1600, 230 V / 1600 W, EU plug	120.881
energy HT1600, 230 V / 1600 W, UK plug	126.732
energy HT1600, 120 V / 1600 W, US plug	123.898





**energy HT1600  
kit solutions**

	Plastic welding kit	Overlap welding kit	Cable and foil shrinking kit
230 V / 1600 W, UK plug		126.767	125.016
230 V / 1600 W, EU plug	120.883	120.882	125.015
230 V / 1600 W, CN plug	120.988	120.888	
120 V / 1600 W, US plug	120.886	120.885	

**Accessories (included in kit)**

130.632 Tubular nozzle $\varnothing$ 5 mm	•		
146.740 Speed welding nozzle $\varnothing$ 4 mm	•		
130.891 Wide slot nozzle 40 mm		•	•
130.631 Wide slot nozzle 20 mm		•	•
130.611 Pressure roller 40 mm, silicone		•	
119.344 Spoon reflector			•
125.810 Carbon brushes for motor	•	•	•
Plastic case	•	•	•

Plastic welding kit



Overlap welding kit



Cable and foil shrinking kit



# energy HT1600 D: the digitally-controlled hot-air hand tool

The energy HT1600 D is a compact and robust hot-air hand tool with a powerful blower, digital temperature control and LCD display. Thanks to integrated temperature probe control, this device is particularly suitable for reproducible and process-relevant applications.

Hot-air hand tool

## energy HT1600 D

- Digital temperature control from 40 - 620°C
- Ceramic heating element
- Robust brush motor
- Ergonomic handle
- Cooldown function
- Memory settings
- Dust protection

### Technical data

Voltage	V~	120	230
Max. power	W	1600	1600
Temperature	°C	40 - 620	
Air volume (20°)	l/min	120 - 240	
Dimensions L x W (Ø handle)	mm	360 x 101 (59)	
Nozzle seat Ø	mm	31.5	
Weight	kg	1.2	
Conformity marking		CE	
Protection class II		□	

### Delivery contents

Hand tool, one set replacement carbon brushes, instruction manual, cardboard tool packaging

### Article no.

energy HT1600 D, 230 V / 1600 W, CN plug	160.176
energy HT1600 D, 230 V / 1600 W, EU plug	160.170
energy HT1600 D, 230 V / 1600 W, UK plug	160.173
energy HT1600 D, 120 V / 1600 W, US plug	160.179







<b>energy HT1600 D kit solutions</b>	Plastic welding kit	Overlap welding kit
230 V / 1600 W, UK plug	160.175	160.174
230 V / 1600 W, EU plug	160.172	160.171
230 V / 1600 W, CN plug	160.178	160.177
120 V / 1600 W, US plug	160.181	160.180
<b>Accessories (included in kit)</b>		
130.632 Tubular nozzle Ø 5 mm	•	
146.740 Speed welding nozzle Ø 4 mm	•	
130.891 Wide slot nozzle 40 mm		•
130.631 Wide slot nozzle 20 mm		•
130.611 Pressure roller 40 mm, silicone		•
125.810 Carbon brushes for motor	•	•
Plastic case	•	•



Plastic welding kit



Overlap welding kit

Accessories

# energy HT3400: the powerful hot-air hand tool

The energy HT3400 is the ideal tool for performance-intensive work with plastic. The 3400 W heat output can be easily and infinitely adjusted, and can be used for large-scale shrinking, bending, heating and drying work with the corresponding nozzles.

Hot-air hand tool

## energy HT3400

- Variable temperature control up to 650°C
- High-performance 3400 W heat output
- Ceramic heating element
- Robust brush motor
- Ergonomic handle
- Dust filter

### Technical data

Voltage	V~	230
Max. power	W	3400
Temperature	°C	40 - 650
Air volume (20°)	l/min	320
Dimensions L × W (Ø handle)	mm	348 × 101 (59)
Nozzle seat Ø	mm	50
Weight	kg	1.3
Conformity marking		CE
Protection class II		□

### Delivery contents

Hand tool, one set replacement carbon brushes, instruction manual, cardboard tool packaging

### Article no.

energy HT3400, 230 V / 3400 W, EU plug	128.723
energy HT3400, 230 V / 3400 W, CN plug	128.669





**energy HT3400  
kit solutions**

	Universal kit
230 V / 3400 W, EU plug	130.698
230 V / 3400 W, CN plug	130.697
<b>Accessories (included in kit)</b>	
130.633 Spoon reflector	•
130.650 Wide slot nozzle 70 mm	•
125.810 Carbon brushes for motor	•
Plastic case	•



# pic: the compact hot-air hand tool

Whether paint removal, wire wrapping shrinking, tapping or defrosting of pipes: The pic is easy to handle thanks to its two fixed temperature switching stages and is ideal for home improvement or quick, occasional professional work. The low weight and the ergonomic handle make work easier.

Hot-air hand tool

## pic

- Two temperature settings, 350°C / 500°C
- Two-stage air volume setting
- Optimized weight distribution
- Resistant and robust tool body
- Non-slip handle



### Technical data

Voltage	V~	100	120	230
Max. power	W	1100	1200	1600
Temperature	°C	350/500	350/500	350/500
Air volume	l/min	250/400	250/400	350/500
Dimensions L x W x H	mm	230 x 80 x 240		
Weight	kg	0.58		
Conformity marking		CE		
Safety mark		UL LISTED		
Protection class II		□		

### Delivery contents

Hand tool, instructional manual, plastic tool packaging

### Article no.

pic, 230 V / 1600 W, EU plug	119.055
pic, 230 V / 1600 W, CH plug	119.076
pic, 230 V / 1600 W, UK plug	119.084
pic, 230 V / 1600 W, AUS plug	119.225
pic, 230 V / 1600 W, CN plug	119.475
pic, 120 V / 1200 W, US plug polarized (UL)	119.380
pic, 100 V / 1100 W, US plug non-polarized (Japan)	119.364





**Kit solutions  
pic**

	Universal kit
230 V / 1600 W, CN plug, kit	119.896
230 V / 1600 W, EU plug, kit	122.561
230 V / 1600 W, CH plug, kit	122.563
230 V / 1600 W, UK plug, kit	122.565
230 V / 1600 W, AUS plug, kit	122.746
120 V / 1200 W, US plug, polarized (UL), kit	122.703
100 V / 1100 W, US plug, non-polarized (Japan), kit	122.707
<b>Accessories (included in kit)</b>	
119.342 Wide slot nozzle	•
119.344 Spoon reflector	•
Plastic case	•



# pro: the multi-functional hot-air hand tool

The pro is at its best when used for drying paint and resin cement for sheet metal. It is impressive when working with shrink foil and tubing, repairing urethane car bumpers and applying floor materials or vinyl molded parts. Thanks to its temperature and air volume settings, it adapts perfectly to the work requirements at hand.





Hot-air hand tool

## pro

- Variable temperature control, 100 - 550°C
- Two-stage air volume
- Ergonomic gun handle
- Lightweight



### Technical data

Voltage	V~	100	120	230
Max. power	W	1200	1400	1800
Temperature	°C	80 - 550	80 - 550	100 - 550
Air volume	l/min	250/450	250/450	250/550
Dimensions L × W × H	mm	230 × 80 × 240		
Weight	kg	0.63		
Conformity marking				
Safety mark		 		
Protection class II				

### Delivery contents

Hand tool, instructional manual, plastic tool packaging

### Article no.

pro, 230 V / 1800 W, EU plug	119.056
pro, 230 V / 1800 W, CH plug	119.077
pro, 230 V / 1800 W, UK plug	119.085
pro, 230 V / 1800 W, AUS plug	119.226
pro, 230 V / 1800 W, CN plug	119.476
pro, 120 V / 1400 W, US plug, polarized (UL)	119.381
pro, 100 V / 1200 W, US plug, non-polarized (Japan)	119.365



### Kit solutions pro

	Universal kit
230 V / 1800 W, CN plug, kit	119.897
230 V / 1800 W, EU plug, kit	119.274
230 V / 1800 W, CH plug, kit	122.614
230 V / 1800 W, UK plug, kit	122.554
230 V / 1800 W, AUS plug, kit	122.753
120 V / 1400 W, US plug, polarized (UL), kit	122.719
100 V / 1200 W, US plug, non-polarized (Japan), kit	122.716
<b>Accessories (included in kit)</b>	
119.341 Glass protection nozzle	•
119.343 Tubular nozzle $\varnothing$ 20 mm	•
119.344 Spoon reflector	•
Plastic case	•



Accessories

## plus-S: the hot-air hand tool for versatile and precise use

The plus-S is ideally suited for car wrapping, cable shrinking, loosening screws, ski repairs and crimping pipe flanges. The integrated display with memory function, controls 14 applications and material menus. The large LCD segment display constantly shows the current temperature and air volume setting, thereby facilitating controlled and precise work.

Hot-air hand tool

### plus-S

- Digital temperature control from 80 to 650°C
- Five-level air flow settings
- 14 work programs
- Menu in eight languages
- Standby mode
- Two-component housing
- Ergonomic design



#### Technical data

Voltage	V~	100	120	230
Max. power	W	1300	1500	2000
Temperature	°C	80 - 650	80 - 650	100 - 650
Air volume	l/min	200 - 500	200 - 500	200 - 550
Dimensions L x W x H	mm	230 x 80 x 240		
Weight	kg	0.63		
Conformity marking		CE		
Safety mark		UL1010		
Protection class II		□		

Only available as a kit (hot-air hand tool incl. accessories)



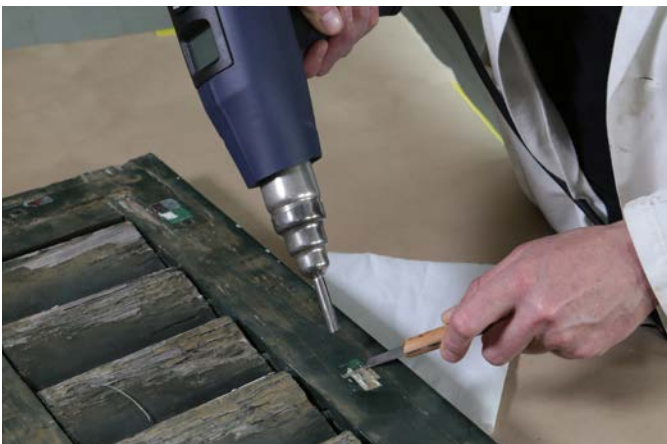


### Kit solutions plus-S

Kit solutions plus-S	Universal Kit
230 V / 2000 W, CN plug	155.731
230 V / 2000 W, EU plug	155.730
230 V / 2000 W, CH plug	155.736
230 V / 2000 W, UK plug	156.574
230 V / 2000 W, AUS plug	157.811
120 V / 1500 W, US plug, polarized (UL)	155.732
100 V / 1300 W, US plug, non-polarized (Japan)	155.733

### Accessories (included in kit)

119.344 Spoon reflector	•
119.345 Tubular nozzle Ø 6 mm	•
119.346 Wide slot nozzle 25 mm	•
119.347 Solder reflector nozzle	•
119.348 Pressure roller	•
Plastic case	•



# HG 210-B: the handy, lightweight hot-air hand tool

With its two-stage blower and heating unit (350°C / 550°C), the reliable, easy-to-use HG 210-B hot-air hand tool is a firm favorite for do-it-yourself projects around the house or in the hobby room. The numerous uses range from removing paint and defrosting pipes to loosening rusty screws.

Hot-air hand tool

## HG 210-B

- Two temperature settings, 350°C / 550°C
- Ease of use
- Ergonomic handle
- Lightweight
- EC-compliant



### Technical data

Voltage	V~	120	230
Max. power	W	1200	1600
Temperature	°C	350/550	350/550
Air volume	l/min	250 / 400	350/500
Dimensions L × W × H	mm	235 × 80 × 245	
Weight	kg	0.5	
Conformity marking		CE	
Protection class II		□	

### Delivery contents

Hand tool, instruction manual, cardboard tool packaging

### Article no.

HG 210-B, 230 V / 1600 W, EU plug	124.148
HG 210-B, 230 V / 1600 W, CN plug	124.149
HG 210-B, 230 V / 1600 W, CH plug	124.426
HG 210-B, 230 V / 1600 W, UK plug	124.427
HG 210-B, 230 V / 1600 W, AUS plug	124.428
HG 210-B, 120 V / 1200 W, US-plug not polarized	124.785





# HG 330-B: The WELDY compact hot-air blower

The high-efficiency HG 330-B hot-air blower – also known as a heat gun – has two fast temperature switching stages for selecting between 350°C and 550°C, which allows it to meet the requirements for a wide range of specialist and home improvement tasks. Whether paint and varnish removal, refreshing of plastic parts, loosening valves and fittings or defrosting pipes, thanks to its low weight and comfortable handle, the HG 330-B hot-air blower is a useful tool for various tasks that require hot air.

Hot-air hand tool

## HG 330-B

- Combines efficiency with good performance
- Two fast temperature switching stages
- Reasonably priced entry-level unit for professionals and do-it-yourselfers
- Well-suited for processing plastic films and plastic profiles



### Technical data

Voltage	V~	100	120	230
Max. power	W	1100	1200	1600
Temperature	°C	350 / 550	350 / 550	350 / 550
Air volume	l/min	250 / 400	250 / 400	350 / 500
Dimensions L × W × H	mm	250 × 80 × 230		
Weight	kg	0.7		
Conformity marking		CE		
Protection class II		□		

Only available as a kit (hot-air hand tool incl. accessories)





#### Kit HG 330-B

230 V / 1600 W, CN plug	124.403
230 V / 1600 W, EU plug	164.323
230 V / 1600 W, CH plug	134.690
230 V / 1600 W, UK plug	131.321
230 V / 1600 W, AUS plug	133.771
120 V / 1200 W, US plug, polarized (UL)	123.155
100 V / 1100 W, JP plug	120.128

#### Accessories (included in kit)

119.341 Glass protection nozzle	•
119.344 Spoon reflector	•
Carton tool packaging	•
Instruction manual	•



Accessories

# HG 330-S: The WELDY multi-functional hot-air blower

HG 330-S is a high-performance hot-air blower, which is also referred to as a heat gun. It is designed for many professional and home improvement tasks, with continuous rapid temperature selection between 80°C and 600°C and a two-stage blower. Whether for paint or varnish removal, mounting and shrinking plastic films, refreshing plastic parts with hot air, defrosting pipes – the HG 330-S hot-air blower makes tasks that require hot air easier thanks to high heat and blowing strength, with low weight and an ergonomic design.

Hot-air hand tool

## HG 330-S

- Can be used for multiple functions
- Infinitely variable rapid temperature selection and two-stage blower
- High heat and blowing performance
- Well-suited for refreshing plastic parts, for example on or in cars



### Technical data

Voltage	V~	100	120	230
Max. power	W	1200	1400	2000
Temperature	°C	80 - 600	80 - 600	80 - 600
Air volume	l/min	250 / 450	250 / 450	250 / 550
Dimensions L × W × H	mm	250 × 80 × 230		
Weight	kg	0.7		
Conformity marking		CE		
Protection class II		□		

Only available as a kit (hot-air hand tool incl. accessories)



#### Kit HG 330-S

230 V / 2000 W, CN plug	124.404
230 V / 2000 W, EU plug	164.324
230 V / 2000 W, CH plug	134.691
230 V / 2000 W, UK plug	131.322
230 V / 2000 W, AUS plug	133.772
120 V / 1400 W, US plug, polarized (UL)	123.156
100 V / 1200 W, JP plug	120.129

#### Accessories (included in kit)

119.341 Glass protection nozzle	•
119.343 Tubular nozzle $\varnothing$ 20 mm	•
119.344 Spoon reflector	•
Carton tool packaging	•
Instruction manual	•



Accessories

34 / 35

# HG 330-A: The powerful WELDY hot-air blower

The HG 330-A hot-air blower, also known as a hot-air blower, is powerful and easy to operate. The convenient hot-air blower can be used for countless applications. The working temperature can be adjusted in five-degree intervals between 80°C to 650°C. Thanks to digital temperature control, the set specification temperature is fixed and remains constant – independently of the air-quantity setting and the nozzle accessory used.

Hot-air hand tool

## HG 330-A

- Digital temperature control for constant operating temperature
- Suitable for numerous applications including but not restricted to the welding of plastic covers and containers as well as car wrapping
- Ergonomic handle design for easy handling
- Five configurable memory locations for temperature and air stages



### Technical data

Voltage	V~	100	120	230
Max. power	W	1300	1500	2300
Temperature	°C	80 - 650	80 - 650	80 - 650
Air volume	l/min	200 - 500	200 - 500	200 - 550
Dimensions L × W × H	mm	250 × 80 × 230		
Weight	kg	0.75		
Conformity marking		CE		
Protection class II		□		

Only available as a kit (hot-air hand tool incl. accessories)



The handy, light hot-air blower is ideally suited for large-surface bonding on cars, foils, plastic welding work, cable shrinking, loosening screws, ski-repair work and shaping pipe flanges.



**Kit HG 330-A**

230 V / 2300 W, CN plug	124.405
230 V / 2300 W, EU plug	164.325
230 V / 2300 W, CH plug	134.692
230 V / 2300 W, UK plug	131.323
230 V / 2300 W, AUS plug	133.773
120 V / 1500 W, US plug, polarized (UL)	123.157
100 V / 1300 W, JP plug	120.130

**Accessories (included in kit)**

119.343 Tubular nozzle Ø 20 mm	•
119.344 Spoon reflector	•
119.345 Tubular nozzle Ø 6 mm	•
119.346 Wide slot nozzle 25 mm	•
119.348 Pressure roller (ABS) 30 mm	•
Carton tool packaging	•
Instruction manual	•



# HG 530-S: The multi-functional hot-air blower for professionals by WELDY

The HG 530-S is a powerful hot-air blower with quick and infinitely variable temperature selection from 80°C through 620°C for use in numerous technical and industrial applications. Example applications for which it can be used include the professional removal of paint and varnish, shrinking and expanding plastic films, and smoothing and stretching leather and other sensitive materials. Thanks to a combination of regulated heating capacity, high fan

Hot-air hand tool

## HG 530-S

- Durable ceramic heating element
- Ergonomic handle design for easy handling
- Lightweight and well-balanced
- Versatile and suitable for professional applications



### Technical data

Voltage	V~	100	120	230
Max. power	W	1300	1500	2000
Temperature	°C	80 - 620	80 - 620	80 - 620
Air volume	l/min	250 / 450	250 / 450	250 / 550
Dimensions L × W × H	mm	250 × 80 × 230		
Weight	kg	0.75		
Conformity marking		CE		
Protection class II		□		

Only available as a kit (hot-air hand tool incl. accessories)

speed, low weight, and ergonomic handle design, the HG 530-S hot-air blower is suitable for multi-functional use and makes working with hot air significantly easier.



**Kit HG 530-S**

230 V / 2000 W, CN plug	124.406
230 V / 2000 W, EU plug	164.326
230 V / 2000 W, CH plug	134.693
230 V / 2000 W, UK plug	131.324
230 V / 2000 W, AUS plug	133.774
120 V / 1500 W, US plug, polarized (UL)	123.158
100 V / 1300 W, JP plug	120.131

**Accessories (included in kit)**

119.344 Spoon reflector	•
119.345 Tubular nozzle Ø 6 mm	•
119.346 Wide slot nozzle 25 mm	•
119.347 Solder reflector nozzle	•
119.348 Pressure roller (ABS)30 mm	•
Carton tool packaging	•
Instruction manual	•



# HG 530-A: The powerful hot-air blower for professionals by WELDY

The HG 530-A hot-air blower is compact, lightweight, and ergonomic. Its high heating and blower capacities make it one of the strongest hot-air blowers. Infinitely variable digital temperature control keeps its operating temperature constant at between 80°C and 650°C, whatever the air quantity setting and whichever nozzle accessories are being used. The multi-functional HG 530-A hot-air blower is suitable for use in a wide variety of industrial applications including car wrapping, cable shrinking, loosening screws or fittings, etc.

Hot-air hand tool

## HG 530-A

- Durable ceramic heating element
- Ergonomic handle design for easy handling
- Lightweight and well-balanced
- Versatile and suitable for professional applications



### Technical data

Voltage	V~	100	120	230
Max. power	W	1300	1500	2300
Temperature	°C	80 - 650	80 - 650	80 - 650
Air volume	l/min	200 - 500	200 - 500	200 - 550
Dimensions L × W × H	mm	250 × 80 × 230		
Weight	kg	0.75		
Conformity marking		CE		
Protection class II		□		

Only available as a kit (hot-air hand tool incl. accessories)





#### Kit HG 530-A

230 V / 2300 W, CN plug	124.407
230 V / 2300 W, EU plug	164.327
230 V / 2300 W, CH plug	134.694
230 V / 2300 W, UK plug	131.325
230 V / 2300 W, AUS plug	133.775
120 V / 1500 W, US plug, polarized (UL)	123.159
100 V / 1300 W, JP plug	120.132

#### Accessories (included in kit)

119.344 Spoon reflector	•
119.345 Tubular nozzle Ø 6 mm	•
119.346 Wide slot nozzle 25 mm	•
119.347 Solder reflector nozzle	•
119.348 Pressure roller (ABS)30 mm	•
Carton tool packaging	•
Instruction manual	•



Accessories

## Accessories Hot-air hand tool

### Nozzles

	energy HT1600	energy HT1600D	energy HT3400	HG 210-B	HG 330-B / pic	HG 330-S / pro	HG 330-A / HG 530-S /	HG 530-A / plus-S
 <b>130.632 / 147.250 (reinforced)</b> Tubular nozzle Ø 31.5 mm, Ø 5 mm, 37 mm, 15° angled	•	•						
 <b>146.740</b> Speed welding nozzle Ø 8 mm, round Ø 4 mm	•	•					•	
 <b>125.315</b> Speed welding nozzle Ø 8 mm, round Ø 5 mm	•	•			•		•	
 <b>127.833</b> Speed welding nozzle Ø 8 mm, 7 mm triangular profile	•	•					•	
 <b>147.248</b> Tacking nozzle Ø 8 mm	•	•					•	
 <b>133.174</b> Smoothing nozzle Ø 8 mm	•	•					•	
 <b>130.891</b> <b>124.777 (reinforced)</b> Wide slot nozzle Ø 31.5 mm, 40 × 2 mm, 15° angled	•	•						
 <b>130.631</b> <b>124.772 (reinforced)</b> Wide slot nozzle Ø 31.5 mm, 20 × 2 mm, 15° angled	•	•						
 <b>130.650</b> Wide slot nozzle Ø 50 mm, 70 × 10 mm, straight			•					
 <b>119.342</b> Wide slot nozzle Ø 35.5, 50 × 3 mm, straight					•	•	•	
 <b>119.341</b> Glass protection nozzle Ø 35.5, 50 × 5 mm, straight					•	•	•	

	energy HT1600	energy HT1600D	energy HT3400	HG 210-B	HG 330-B / pic	HG 330-S / pro	HG 330-A / HG 530-S /	HG 530-A / plus-S
 <b>119.343</b> Tubular nozzle Ø 35.5 mm, Ø 20 mm, 30 mm, straight					•	•	•	
 <b>119.345</b> Tubular nozzle Ø 35.5 mm, Ø 6 mm, 75 mm, straight							•	
 <b>119.346</b> Wide slot nozzle Ø 35.5 mm, Ø 6 mm, 75 mm, 15° angled							•	
 <b>119.347</b> Soldering reflector Ø 35.5 mm, 13 × 5 × 10 mm							•	
 <b>119.344</b> Ø 35.5, 40 × 35 mm, <b>130.633</b> Ø 50.0, 60 × 55 mm Spoon reflector, 90° angled	•	•		•	•	•	•	
 <b>148.442</b> Sieve reflector Ø 31.5, 50 × 34 mm, 75° angled	•	•						

### General Accessories

	energy HT1600	energy HT1600D	energy HT3400	HG 210-B	HG 330-B / pic	HG 330-S / pro	HG 330-A / HG 530-S /	HG 530-A / plus-S
 <b>119.177</b> Contour scraper	•	•	•	•	•	•	•	
 <b>119.178</b> Contour scraper set	•	•	•	•	•	•	•	
 <b>153.894</b> Quarter moon knife, 100 mm stainless steel blade, with wooden handle	•	•						
 <b>124.336</b> Quarter moon knife, 100 mm stainless steel blade, with plastic handle	•	•						

	energy HT1600	energy HT1600D	energy HT3400	HG 210-B	HG 330-B / pic	HG 330-S / pro	HG 330-A / HG 530-S / plus-S
 <b>153.895</b> Leather case for crescent-shaped cutter	•	•					
 <b>132.050</b> Trimming guide for 153.894 and 124.336	•	•					
 <b>130.611 40 mm</b> <b>130.146 30 mm*</b> * with ball bearing Pressure roller, silicone	•	•	•				
 <b>131.693</b> Pressure roller 30 mm, PTFE	•	•					
 <b>135.750</b> Pressure roller 6 mm, brass	•	•					
 <b>119.348</b> Pressure roller (ABS) 30 mm							•
 <b>130.612</b> Brass wire brush, with wooden handle	•	•					
 <b>154.089</b> Spring balancer				•			
 <b>123.805 (230 V)</b> <b>123.895 (120 V)</b> Heating element HT1600	•	•					
 <b>158.802 (230 V)</b> <b>158.805 (120 V)</b> Heating element HT1600 D			•	•			
 <b>124.322 (230 V)</b> Heating element HT3400			•				

	energy HT1600	energy HT1600D	energy HT3400	HG 210-B	HG 330-B / pic	HG 330-S / pro	HG 330-A / HG 530-S / plus-S
 <b>115.355</b> Welding wire PP, Ø 4 mm, gray, 5 kg	•	•					•
 <b>115.366</b> Welding wire HDPE, Ø 4 mm, black, 5 kg	•	•					•
 <b>119.179 PP, gray</b> <b>119.180 HDPE, black</b> <b>119.181 ABS, white</b> Welding rods set, Ø 5 × 230 mm	•	•					•
 <b>165.036</b> Safe fire protection for users and material					•	•	•









# Flat and pitched roofs

---

## Welding machines

miniwelder roof2  
roofer RW3400

38 / 39  
40 / 41

## Hot-air hand tools

energy HT1600  
energy HT1600 D  
energy HT3400

10 / 11  
12 / 13  
14 / 15



# miniwelder roof2: lightweight, tolerant, economical

Lightweight and easy to use. The miniwelder roof2 can be used on all pitched roofs and is ideal for all PVC and TPO inner roof membranes, up to 1 mm. The inner roof membrane does not flap when welding as the hot-wedge technology requires no blower air. Save money on toxic solvent-welding agents.

Hot-wedge welding machine

## miniwelder roof2

- Suitable for all pitched roofs, even with exceptional strain
- Ideal for prefabrication
- For thin 0.3–1 mm PVC and TPO inner roof membranes
- Can be used at both high and low outdoor temperatures
- Safe contact welding thanks to the aluminum steel hot wedge
- Ergonomic guide bar
- User-friendly and weighs only 4 kg
- No expensive, toxic solvent-welding agents required

### Technical data

Voltage	V~	120 / 230
Frequency	Hz	50 / 60
Max. power	W	800
Temperature	°C	60 - 480
Hot wedge material		aluminum
Hot wedge width (without test channel)	mm	40
Max. overlap	mm	80
Speed	m/min	0.4 - 7.5
Dimensions (L × W × H)	mm	228 × 228 × 170
Weight (without guide bar)	kg	4
Conformity marking		CE
Protection class I		⊕

### Delivery contents

Instruction manual, transport box, guide bar, hex wrench, cleaning brush

### Article no.

miniwelder roof2, 230 V / 800 W, with EU plug	158.291
miniwelder roof2, 120 V / 800 W, with US plug	125.505





### Accessories



158.977 (230 V)  
151.958 (120 V)  
Hot wedge, 40 mm  
Chromium steel (for PVC)



158.976 (230 V)  
151.957 (120 V)  
Hot wedge, 40 mm copper



158.720  
Miniwelder guide bar  
Chromium steel (for PVC)





# roofer RW3400: the compact welding machine for roofs

With the roofer RW3400, you obtain a high welding performance at a low price. The overlap welding machine is ideal for all thermoplastic membranes up to 1.8 mm. With its automatic start-up system and ease of use, the RW3400 guarantees reliable welds.

Welding machine

## roofer RW3400

- Freely-selectable speed up to 7.5m per minute
- High-performance 3400W hot-air gun for the desired temperature and air volume
- Automatic start-up system for optimal welding start
- Guide bar and handle for ergonomic use
- Integrated laser control

### Technical data

Voltage	V~	230
Max. power	W	3500
Temperature	°C	20 - 600
Weld seam width	mm	40
Speed	m/min	1.0 - 7.5
Dimensions (L x W x H)	mm	445 x 280 x 320
Weight (with guide bar)	kg	16
Protection class I		⚡

### Delivery contents

Instruction manual, aluminum box, guide bar, cleaning copper brush, heating elements

### Article no.

roofer RW3400, 40 mm, 230 V / 3500W, with 16 A EEC plug	145.590
roofer RW3400, 40 mm, 230 V / 3500W, with EU plug	145.450

### Kit

Energy 1600 hand tool including wide slot nozzle, 20 and 40mm, and hand pressure roller	120.882
---	---------







### Accessories



**123.287**  
Overlap welding nozzle,  
40 mm



**132.028**  
Additional weight 0.6 kg



**130.594**  
Heating element with mica  
protection tube





# Technical textiles industrial fabrics

---

## Welding machines

miniwelder tex1	44 / 45
miniwelder tex2	46 / 47
foiler ETL	48 / 49
foiler	50 / 51

## Hot-air hand tools

energy HT1600	10 / 11
energy HT1600 D	12 / 13
energy HT3400	14 / 15
pic	16 / 17
pro	18 / 19
plus-S	20 / 21
HG 210-B	22 / 23
HG 330-B	24 / 25
HG 330-S	26 / 27
HG 330-A	28 / 29
HG 530-S	30 / 31
HG 530-A	32 / 33



# miniwelder tex1: Superlight welder for thin membranes

miniwelder tex1, the solution for welding thin films. Thanks to the innovative ball wedge, the miniwelder tex1 is suitable for almost any foil or membrane from 0.05 - 1.0 mm.

With the help of its revolutionary control system, welding start-up is child's play. The welder is simple and intuitive to use. You will be convinced by the performance of the miniwelder tex1.

Hot-wedge welding machine

## miniwelder tex1

- Lightweight (3.5 kg)
- Welding speed of up to 7.5 m per minute
- Revolutionary chainless drive technology
- Innovative ball wedge for very thin foils from 0.05 - 1.0 mm
- Good performance at an affordable price



### Technical data

Voltage	V~	230
Frequency	Hz	50/60
Max. power	W	300
Temperature	°C	60 - 480
Hot wedge material		Aluminium, hard ematalized
Hot wedge width	mm	15
Max. overlap	mm	100
Speed	m/min	0.4 - 7.5
Dimensions (L x W x H)	mm	228 x 228 x 170
Weight	kg	3.5
Conformity marking		CE
Weldable materials		PE, PVC, TPO, PP 0.05 - 1.0 mm

### Delivery contents

Instruction manual, transport box, hex wrench, cleaning brush

### Article no.

miniwelder tex1, 230V/300W, with EU plug

125.666





**156.563**  
Heating wedge complete,  
15 mm, aluminium



**156.818**  
Silicone drive roller,  
22 × 50 mm, without test  
channel (1 pair)



**158.720**  
Miniwelder guide bar



# miniwelder tex2: The expert for thin membranes

The miniwelder tex2 is ideal for thin materials. Thanks to the welder's optimized wedge geometry, the miniwelder tex2 welds 0.1 to 1.0 mm membranes perfectly. With the help of its revolutionary control system, welding start-up is child's play. The welder is simple and intuitive to use. You will be convinced by the performance of the miniwelder tex2.

Hot-wedge welding machine

## miniwelder tex2

- Lightweight (3.5 kg)
- Welding speed of up to 7.5 m per minute
- Revolutionary chainless drive technology
- Ideal for thin membranes
- Good performance at an affordable price



### Technical data

Voltage	V~	230
Frequency	Hz	50 / 60
Max. power	W	800
Temperature	°C	60 - 480
Hot wedge material		Stainless steel/copper
Weld seam width	mm	20
Max. overlap	mm	100
Speed	m/min	0.4 - 7.5
Dimensions (L x W x H)	mm	228 x 228 x 170
Weight	kg	3.5
Conformity marking		CE
Weldable materials		PE, PVC, TPO, PP 0.1 - 1.0 mm

### Delivery contents

Instruction manual, transport box, hex wrench, cleaning brush

### Article no.

miniwelder tex2, 230V/800W (stainless steel for PVC), EU plug	154.883
miniwelder tex2, 230V/800W CU (copper), EU-plug	154.885



### Accessories



**156.668 (230 V)**  
Hot wedge, 20 mm  
Stainless steel (for PVC)



**156.616 (230 V)**  
Hot wedge, 20 mm copper



**156.818**  
Silicone drive roller,  
22 x 50 mm, without test  
channel (1 pair)



**158.720**  
Miniwelder guide bar



## foiler ETL: compact and strong

The intuitive use and automatic start of this hot air machine makes welding sheets and advertising banners easy. The integrated guide roller ensures optimal track guidance for overlap welding and hem seams. Whether the materials are thick or thin, the foiler ETL offers you perfect welding of membranes and advertising banners.

Welding machine

### foiler ETL

- Automatic start when swiveling
- Integrated guide roller
- Weld seam widths of 20 or 30 mm
- Lightweight
- Welds thick or thin membrane and advertising banners



#### Technical data

Voltage	V~	230
Max. power	W	1700
Temperature	°C	40 - 530
Weld seam width	mm	20 / 30
Speed	m/min	0.4 - 7.5
Dimensions (L × W × H) (without welding guide)	mm	445 × 280 × 320
Weight	kg	11
Protection class I		⚡

#### Delivery contents

Tool, instruction manual, (lifting device 159.531 not included in purchase price)

#### Article no.

foiler ETL, 230 V / 1700 W, 20 mm, with EU plug	141.900
foiler ETL, 230 V / 1700 W, 30 mm, with EU plug	141.901





### Accessories



**123.627**  
Overlap welding nozzle,  
20 mm



**123.663**  
Overlap welding nozzle,  
30 mm



**131.849**  
Weight with handle 3 kg  
complete



**126.096**  
Complete guide bar



**123.805**  
Heating element with  
protective mica tube



**159.531**  
Lifting device

### General accessories



**130.611**  
Silicone pressure roller  
40 mm



**130.146**  
Silicone pressure roller  
30 mm



**130.612**  
Brass brush  
30 mm



# foiler: the reliable hot-air machine for sheets and advertising banners

The foiler ensures simple and reliable welding of sheets and advertising banners. The weld seam width can be set to 20 or 30 mm as required. Thanks to the air volume and temperature control, you can adjust the welding settings to suit your needs. The foiler is your welding machine for individual welding applications.

Welding machine

## foiler

- Weld seam width of 20 or 30 mm as required
- Freely-selectable welding speed: up to 7.5 m per minute
- Temperature up to 530°C
- Automatic cooling function
- Process control display



### Technical data

Voltage	V~	230
Max. power	W	2100
Temperature	°C	80 - 530
Weld seam width	mm	20 / 30
Speed	m/min	1.0 - 7.5
Dimensions (L × W × H) (without welding guide)	mm	445 × 276 × 280
Weight	kg	10.8
Protection class I		⊕

### Delivery contents

Tool, instruction manual, (weight 131.849 not included in purchase price)

### Article no.

foiler, 230V / 2100W, 20 mm, with EU plug	155.831
foiler, 230V / 2100W, 30 mm, with EU plug	155.832
foiler, 230V / 2100W, 20 mm, with CN plug	132.000
foiler, 230V / 2100W, 30 mm, with CN plug	133.345



### Accessories



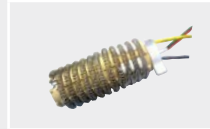
**123.627**  
Overlap welding nozzle,  
20 mm



**123.663**  
Overlap welding nozzle,  
30 mm



**131.849**  
Weight with handle 3 kg  
complete



**119.654**  
Heating element with  
mica protection tube for  
Weldy Plus



**159.531**  
Lifting device

### General accessories



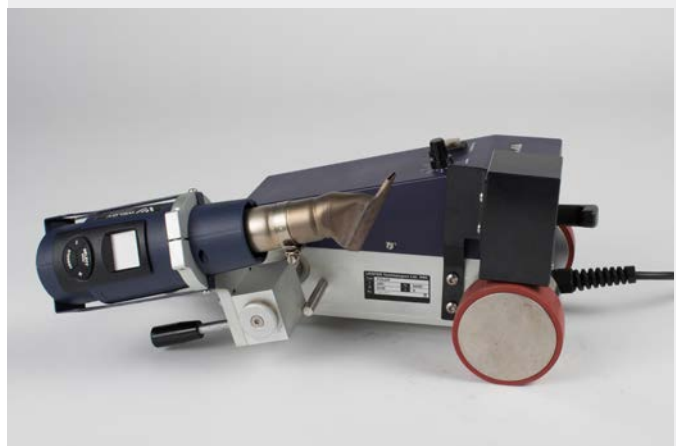
**130.611**  
Silicone pressure roller  
40 mm



**130.146**  
Silicone pressure roller  
30 mm



**130.612**  
Brass brush  
30 mm











# Civil Engineering / GEO

---

## Welding machines

miniwelder geo2	54 / 55
Test needle	56
booster EX2	60 - 63
booster EX3	61 - 63

## Hot-air hand tools

energy HT1600	10 / 11
energy HT1600 D	12 / 13
energy HT3400	14 / 15

# miniwelder geo2: lightweight

This quick and lightweight welding machine is ideal for geomembranes from 0.5 to 1.5 mm thick (HDPE 0.4 - 1.0 mm; TPO 0.7 - 1.5 mm). The miniwelder geo2 can be used to weld fish farm and water tanks, in foundation sealing and many other industrial areas. The miniwelder geo2 distinguishes itself through its revolutionary drive technology and

Hot-wedge welding machine

## miniwelder geo2

- Lightweight (< 4 kg)
- Welding speed up to 7.5 m per minute
- Intuitive operation
- Revolutionary chainless drive technology
- Automatic wedge positioning



### Technical data

Voltage	V~	120 / 230
Frequency	Hz	50 / 60
Max. power	W	800
Temperature	°C	60 - 480
Hot wedge material		Copper / Chrome steel
Weld seam width	mm	2 × 12
Max. overlap	mm	100
Speed	m/min	0.4 - 7.5
Dimensions (L × W × H)	mm	228 × 228 × 170
Weight	kg	3.9
Conformity marking		CE
Protection class I		⊕
Weldable materials		LDPE, PVC* (0.5 - 1.5 mm) TPO/FPO (0.7 - 1.5 mm) HDPE (0.4 - 1.0 mm) * PVC only with steel wedge

### Delivery contents

Instruction manual, transport box, hex wrench, cleaning brush

### Article no.

miniwelder geo2, 230V / 800W, Copper, EU plug	154.880
miniwelder geo2, 230V / 800W, FE Chrome steel, EU plug	154.884
miniwelder geo2, 120V / 800W, Copper, US plug	125.503

its intuitive use. Temperature and speed easily can be activated and deactivated by means of two buttons, and adjusted using two dials. The current process status is displayed by two LEDs.



### Accessories



**156.617 (230 V)**  
**156.204 (120V)**  
Hot wedge, 56 × 36 mm,  
copper with test channel



**156.667 (230 V)**  
**156.205 (120 V)**  
Hot wedge, 56 × 36 mm,  
with test channel, steel  
(for PVC)



**156.818**  
Silicone drive roller,  
22 × 50 mm, without test  
channel (1 pair)



**156.164**  
Drive roller, steel,  
22 × 36 mm, with test  
channel (1 pair)



**158.720**  
Miniwelder guide bar



# Test needle: for the non-destructive leakage test

This robust test instrument can be used to quickly and simply test overlap weld seams for airtightness.

Test instrument

## Test needle

- Noncorrosive stainless steel
- Pressure display up to 6 bar
- Handy air pressure valve
- Sealed, enclosed air outlet
- Robust needle for demanding onsite use
- Every pressure gauge is checked prior to leaving the production facility

## Accessories



124.307  
Replacement needle

## Article no.

WELDY test needle

124.306















# Plastic Fabrication

---

## Welding machines

booster EX2	60
booster EX3	61
Accessories	62 / 63

## Hot-air hand tools

energy HT1600	10 / 11
energy HT1600 D	12 / 13
energy HT3400	14 / 15

## booster EX2 / booster EX3: strong

The booster plays to its strengths in plastics plants, tanks and underground engineering. It comes into its own for welding complete containers, facilities, pipe constructions or landfill sites. With the booster, you can achieve high-quality work on all common polyolefins. In contrast to the short and compact, booster EX2, the booster EX3, with a maximum output of 3.4 kg per hour, is ideal when working standing up.

Hand extruder

### booster EX2

- Motor protection with optical display
- Double-sided wire feed
- Rotating handle
- 360°-adjustable welding shoe with integrated air guide
- Additional handle that fits onto the side



#### Technical data for booster EX2

Voltage	V~	230
Max. power	W	3000
Welding wire	mm	Ø 3 / Ø 4
Material		Polyethylene, polypropylene
Output (PE/PP)	kg/h	1.5 - 2.2
Dimensions (L × W × H)	mm	500 × 140 × 430
Weight (with cable)	kg	6.4
Conformity marking		CE
Protection class II		□

#### Delivery contents

Instruction manual, transport case, T-handle, hex wrench, HDPE welding wire Ø 4 mm, carbon brush for drive motor, K8/10 welding shoe kit, heating element, brass brush

#### Article no.

booster EX2, 230V / 3000W, EU plug, kit	146.738
booster EX2, 230V / 3000W, CN plug, kit	145.589



Hand extruder

## booster EX3

- Motor protection with optical display
- Double-sided wire feed
- Rotating handle
- 360°-adjustable welding shoe with integrated air guide
- Additional handle that fits onto the side



### Technical data for booster EX3

Voltage	V~	230
Max. power	W	3000
Welding wire	mm	Ø 3 / Ø 4
Material		Polyethylene, polypropylene
Output (PE)	kg/h	2.4 - 3.4
Dimensions (L × W × H)	mm	630 × 140 × 430
Weight (with cable)	kg	6.9
Conformity mark		CE
Protection class II		□

### Delivery contents

Instruction manual, transport case, T-handle, hex socket wrench, HDPE welding wire Ø 4 mm, carbon brush for the drive motor, UBL30/1.5 welding shoe kit, heating element, brass brush

### Article no.

booster EX3, 230V / 3000W, EU plug, kit	146.917
booster EX3, 230V / 3000W, CN plug, kit	146.715

Accessories



## Accessories



**126.098 EX2**  
**126.099 EX3**  
Heat protection



**115.366**  
Welding wire HDPE,  
Ø 4 mm, black, 5 kg



**115.355**  
Welding wire PP, Ø 4 mm,  
gray/beige, 5 kg



**119.178**  
Scraper set



**131.693**  
PTFE pressure roller



**116.900**  
Heating element with  
protective mica tube



## Application

	Booster EX2	Booster EX3
Tank construction	+++	++
Electroplating bath	++	+
Water tanks	+++	++
Sewage systems	+++	++
Ventilation systems	++	+
Aquaculture facilities	+++	++
Laboratory construction	++	-
Vehicle construction	+++	+++
Maritime infrastructure	+++	++
Large-scale pipes	++	+++
Leisure infrastructure / pools	+++	+
Plastic repairs	++	-
Geomembranes	+	+++





## Welding shoes



**126.102**  
Basic welding shoe,  
complete



**126.100**  
Blank welding shoe kit



**126.101**  
Welding shoe kit  
UBL30/1.5



**126.116**  
Welding shoe kit  
K8/10



**126.105**  
Welding shoe fillet weld  
K8/10



**126.106**  
Welding shoe fillet weld  
K15



**124.430**  
Welding shoe V-weld  
V8/10-X15/20



**124.431**  
Welding shoe V-weld  
V12-X25



**124.432**  
Welding shoe V-weld  
V15-X30



**126.103**  
Welding shoe overlap TPO/  
FPO 30/1.5



**124.582**  
Welding shoe overlap  
UBL25



**124.583**  
Welding shoe overlap  
UBL30



**124.585**  
Welding shoe overlap  
UBL35



**124.610**  
Welding shoe outer corner  
weld C015



**124.611**  
Welding shoe corner weld  
Ø 14 CL 14



**124.628**  
Welding shoe corner weld  
Ø 20 CS 20

Dealer address: