



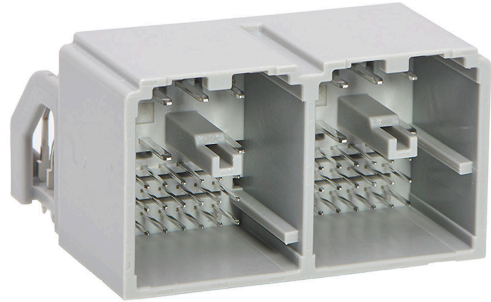
**Part Number :** [1600130623](#)

**Product Description :** stAK50h 2 Bay Infotainment Hybrid Header, 56 Circuits, Bay A 28 Circuit Header, Key 2; Bay B 28 Circuit Header, Key 3; 2.10mm PC Tail Length, Gray, Tube

**Series Number :** 160013

**Status :** Active

**Product Category :** PCB Headers and Receptacles



---

## Documents & Resources

### Drawings

[Drawing 1600130623\\_sd.pdf](#)

[Packaging Design Drawing PK-31302-235-001.pdf](#)

### 3D Models and Design Files

[3D Model PDF 1600130623.pdf](#)

[3D Model 1600130623\\_stp.zip](#)


### Specifications

[Product Specification PS-160013-001-001.pdf](#)

---

## Product Environment Compliance

### Compliance

GADSL/IMDS	Duty-To-Declare
China RoHS	
EU ELV	Compliant per 2000/53/EC
Low-Halogen Status	Low-Halogen per IEC 61249-2-21
REACH SVHC	Not Contained per D(2023)3788-DC (14 Jun 2023)
EU RoHS	Compliant per EU 2015/863

### Multiple Part Product Compliance Statements

- Eu RoHS
- REACH SVHC
- Low-Halogen

## Multiple Part Industry Compliance Documents

- IPC 1752A Class C
- IPC 1752A Class D
- Molex Product Compliance Declaration
- IEC-62474
- chemSHERPA (xml)

## EU RoHS Certificate of Compliance

---

### Part Details

#### General

Status	Active
Category	PCB Headers and Receptacles
Series	160013
Description	stAK50h 2 Bay Infotainment Hybrid Header, 56 Circuits, Bay A 28 Circuit Header, Key 2; Bay B 28 Circuit Header, Key 3; 2.10mm PC Tail Length, Gray, Tube
Application	Automotive, Power, Signal, Wire-to-Board
Component Type	PCB Header
Product Family	stAK50h Connection System
Product Name	stAK50h
UPC	191130043323

#### Electrical

Current - Maximum per Contact	Contact Molex
Voltage - Maximum	14V DC

#### Physical

Breakaway	No
Circuits (Loaded)	56
Circuits (maximum)	56
Color - Resin	Gray
Durability (mating cycles max)	10
First Mate / Last Break	No
Glow-Wire Capable	No
Guide to Mating Part	Yes

Keying to Mating Part	Yes
Lock to Mating Part	Yes
Material - Metal	Copper Alloy
Material - Plating Mating	Tin
Material - Plating Termination	Tin
Material - Resin	SPS
Net Weight	12.846/g
Number of Rows	5
Orientation	Right Angle
Packaging Type	Tube
PC Tail Length	2.10mm
PCB Locator	Yes
PCB Retention	Yes
Pitch - Mating Interface	2.00mm, 4.00mm
Pitch - Termination Interface	2.00mm, 4.00mm
Polarized to Mating Part	Yes
Polarized to PCB	Yes
Shrouded	Yes
Stackable	No
Temperature Range - Operating	-40° to +85°C
Termination Interface Style	Through Hole

---

This document was generated on Sep 04, 2023