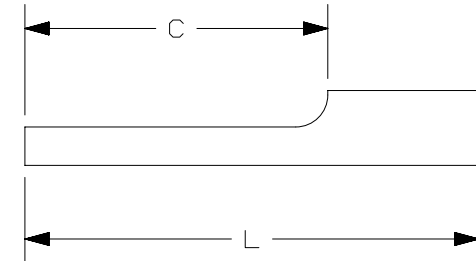
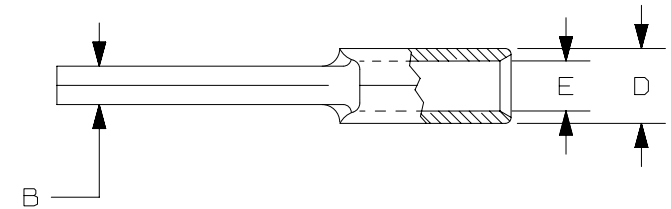


THIS COPY IS PROVIDED ON A RESTRICTED BASIS AND IS NOT TO BE USED IN ANY WAY DETRIMENTAL TO THE INTERESTS OF PANDUIT CORP.

PANDUIT PART #	WIRE SIZE		DIMENSIONS in. [mm]				
	AWG	mm ²	L ± .03 [0,8]	B ± .01 [0,3]	C ± .015 [0,4]	D ± .01 [0,3]	E ± .01 [0,3]
P18-P47	#22-18	0,5-1,0	.75 [19,1]	.07 [1,8]	.49 [12,4]	.14 [3,6]	.06 [1,5]
P14-P47	#16-14	1,5-2,5	.75 [19,1]	.07 [1,8]	.49 [12,4]	.16 [4,1]	.08 [2,0]
P10-P55	#12-10	4,0-6,0	.79 [20,1]	.11 [2,8]	.55 [14,0]	.22 [5,6]	.15 [3,8]

UL TOOLS
CT-100A CT-200 CT-600-A (CT-570CH) CT-1570 CT-2500 (CT-2570CH)

PANDUIT APPROVED TOOLS
CT-160 CT-260



NOTES:

- UL LISTED FOR:
 - A. SOLID OR STRANDED COPPER WIRE
 - B. 302°F [150°C] MAX. OPERATING TEMPERATURE
 - C. 2000 VOLTS MAX
- SEE www.panduit.com FOR PACKAGE QUANTITIES
- MATERIAL:
 - A. STAMPING: .03" [0,8] THK COPPER, TIN PLATED
- DIMENSIONS IN BRACKETS ARE METRIC EQUIVALENT
- WIRE STRIP LENGTH: $9/32'' \begin{matrix} +1/32 \\ -0 \end{matrix} [7,1\text{mm} \begin{matrix} +0,8 \\ -0 \end{matrix}]$



REV	DATE	BY	CHK	APR	DESCRIPTION	ECN
08	5/17	JHNU	TMR	RGB	UPDATED TOOL CHART FORMAT	N41334BA-A41334
07	07/14	MBY	JHNU	RGB	REVISED NOTES, MOVED TOOLS TO TABLE, REVISED CERTIFICATION	N41334BA-A41334
06	09/12	JBN	LCA	VMB	ADDED METRIC EQUIVALENT. REVISED NOTES. UPDATED TO CURRENT STANDARDS.	A41334

TITLE		PIN TERMINAL, NON-INSULATED,	
ITEM REVISION NAME		CUSTOMER DRAWING	
DATASET FILE NAME		N41334BA/08	PANDUIT
		N41334BA_DC/08A	
UNLESS OTHERWISE SPECIFIED, DIMENSIONAL TOLERANCES ARE: IN [mm]		MATERIAL:	
.X ± .XXX ± .XX ± ANGLES ±		SEE NOTES	
THIRD ANGLE PROJECTION		DRAWING NUMBER:	
A41334		A41334	
DRAWN BY	DATE	CHK	SCALE
DAW	-	RLS	N.T.S.
SHEET 1 OF 1			SIZE
			A

D101000DA/12

Mouser Electronics

Authorized Distributor

Click to View Pricing, Inventory, Delivery & Lifecycle Information:

[Panduit:](#)

[P10-P55-D](#) [P14-P47-C](#) [P18-P47-C](#) [P14-P47-M](#)