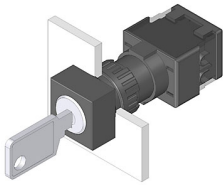


# EAO – Your Expert Partner for Human Machine Interfaces

## 61-2802.0/D - Keylock switch actuator 3 positions square

### 61-2802.0/D - Keylock switch actuator 3 positions square



*Attention: The preview is based on a sample product. This can differ from your current configuration.*

#### Mounting

Mounting cut-out                      Ø 16 mm  
Design                                      raised

#### Other Attributes

Weight                                      0,065 kg

#### Operating-/Indication part

Switching angle

#### IP-Rating

Front protection                      IP65

#### Actuator

Switching action                      Maintain(a) - Rest - Momentary

#### Switching element

Rotary positions                      3

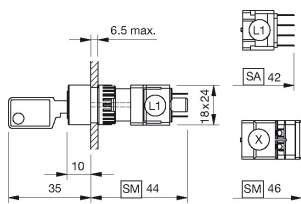
#### Function

Keylock switch

# EAO – Your Expert Partner for Human Machine Interfaces

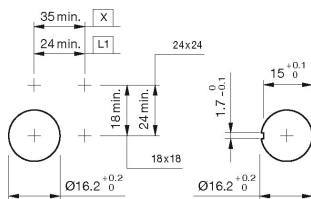
## 61-2802.0/D - Keylock switch actuator 3 positions square

### Dimensions



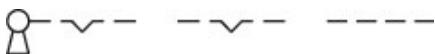
L1 = Solder/Plug-in terminal 2.8 x 0.5 mm

### Mounting cut-outs

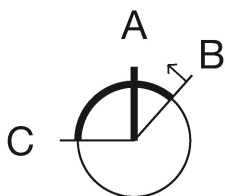


L1 = Solder/Plug-in terminal 2.8 x 0.5 mm

### Wiring diagram



### Switching positions



### Additional information

Standard lock: DOM 311

Two keys are supplied with each key lock switch

Optional lock numbers on request

If mounted with anti-twist device, the lug is on the left side

Anti-twist ring not needed by using anti-twist device

### Legend

Switching action: A = Rest, B = Momentary, C = Maintained