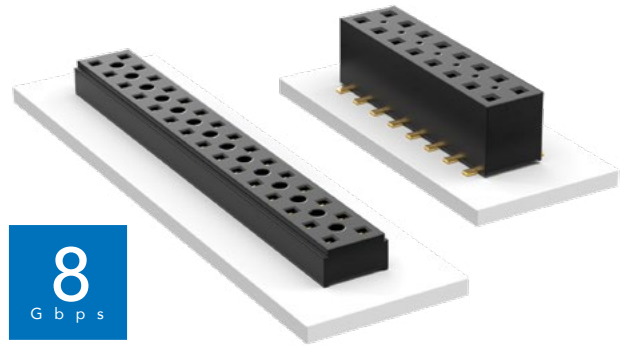


COST-EFFECTIVE & DUAL WIPE SOCKETS

(2.00 mm) .0787" PITCH • TLE/CLT SERIES



TLE

Mates:
TMMH, TMM, MTMM,
MMT, TW, LTMM, ZLTMM,
TCMD, TSH

CLT

Mates:
TMM, TMMH, MTMM,
MMT, TW, TSH

SPECIFICATIONS

TLE

Insulator Material:
Black Liquid Crystal Polymer
Contact Material:
Phosphor Bronze
Plating:
Au over 50 μ " (1.27 μ m) Ni
Current Rating (TLE/TMMH):
3.2 A per pin
(2 pins powered)
Operating Temp Range:
-55 °C to +125 °C
Insertion Depth:
(2.08 mm) .082" to
(4.37 mm) .172" with
(0.38 mm) .015" wipe,
pass-through, or
(3.35 mm) .132" min
for bottom entry

CLT

Same as TLE except:
Plating:
Sn or Au over 50 μ " (1.27 μ m) Ni
Current Rating (TMMH/CLT):
4.1 A per pin
(2 pins powered)
Insertion Depth:
Top Entry=
(1.40 mm) .055" minimum
Bottom Entry=
(2.57 mm) .101" minimum
(add board thickness for
correct post OAL)
Max Cycles:
100 with 10 μ " (0.25 μ m) Au

PROCESSING

TLE

Lead-Free Solderable:
Yes
SMT Lead Coplanarity:
(0.10 mm) .004" max (02-26)
(0.15 mm) .006" max (27-50)*
*(.004" stencil solution
may be available; contact
ipg@samtec.com)
CLT
Same as TLE except:
SMT Lead Coplanarity:
(0.10 mm) .004" max (02-25)
(0.15 mm) .006" max (26-34)*
(0.20 mm) .008" max (35-50)*
*(.004" stencil solution
may be available; contact
ipg@samtec.com)

Note:
Some lengths, styles and
options are non-standard,
non-returnable.

TLE	- 1	NO. PINS PER ROW	- 01	PLATING OPTION	- DV	OPTION
TIGER BEAM CONTACT		02 thru 50		-G = 10 μ " (0.25 μ m) Gold		-A = Alignment Pin (3 positions minimum) -K = (5.00 mm) .197" DIA Polyimide Film Pick & Place Pad (3 positions minimum) -P = Metal Pick & Place Pad (4 positions minimum) -TR = Tape & Reel Packaging (2-37 positions only) -FR = Full Reel Tape & Reel (must order maximum quantity per reel; contact Samtec for quantity breaks) (2-37 positions only)

CLT	- 1	NO. PINS PER ROW	LEAD STYLE	PLATING OPTION	D	OTHER OPTIONS
TIGER CLAW CONTACT		02 thru 50		-01 = Through-hole -02 = Surface Mount -03 = Through-hole	-F = Gold flash on contact, Matte Tin on tail -L = 10 μ " (0.25 μ m) Gold on contact, Matte Tin on tail -G = 10 μ " (0.25 μ m) Gold on contact, Gold flash on tail	All options require Style -02 -BE = Bottom Entry (Required for bottom entry applications) -A = Alignment Pin (3 positions minimum) Metal or plastic at Samtec's discretion -K = (5.00 mm) .197" DIA Polyimide Film Pick & Place Pad (04 thru 50 only) -P = Pick & Place Pad (4 positions minimum) (Not always necessary for auto placement.) -TR = Tape & Reel (36 positions max) -FR = Full Reel Tape & Reel (must order maximum quantity per reel; contact Samtec for quantity breaks) (36 positions max)

ALSO AVAILABLE

Other Platings
(MOQ Required)

LEAD STYLE	A
-01	(2.16) .085
-03	(2.95) .116

Mouser Electronics

Authorized Distributor

Click to View Pricing, Inventory, Delivery & Lifecycle Information:

Samtec:

[TLE-110-01-G-DV-A-K](#) [TLE-114-01-G-DV-A](#) [TLE-110-01-G-DV-A-K-TR](#) [TLE-125-01-G-DV-A-K-TR](#) [TLE-120-01-G-DV-A-K-TR](#) [TLE-108-01-G-DV](#) [TLE-110-01-G-DV](#) [TLE-105-01-G-DV](#) [TLE-108-01-G-DV-P-TR](#) [TLE-117-01-G-DV-A](#) [TLE-108-01-G-DV-A-K-TR](#) [TLE-120-01-G-DV-TR](#) [TLE-105-01-G-DV-A-K-TR](#) [TLE-125-01-G-DV](#) [TLE-103-01-G-DV-A](#) [TLE-120-01-G-DV-A](#) [TLE-104-01-G-DV-A](#) [TLE-105-01-G-DV-A-P-TR](#) [TLE-104-01-G-DV-A-K-TR](#) [TLE-106-01-G-DV-A](#) [TLE-107-01-G-DV-A-K-TR](#) [TLE-104-01-G-DV-P-TR](#) [TLE-108-01-G-DV-A](#) [TLE-103-01-G-DV](#) [TLE-107-01-G-DV](#) [TLE-115-01-G-DV-A](#) [TLE-104-01-G-DV-K-TR](#) [TLE-110-01-G-DV-A-P-TR](#) [TLE-112-01-G-DV-A-K-TR](#) [TLE-106-01-G-DV-A-K-TR](#) [TLE-120-01-G-DV-K-TR](#) [TLE-106-01-G-DV-K-TR](#) [TLE-115-01-G-DV-A-K-TR](#) [TLE-110-01-G-DV-K-TR](#) [TLE-103-01-G-DV-K-TR](#) [TLE-104-01-G-DV](#) [TLE-106-01-G-DV](#) [TLE-130-01-G-DV](#) [TLE-122-01-G-DV](#) [TLE-116-01-G-DV-P-TR](#) [TLE-107-01-G-DV-A](#) [TLE-112-01-G-DV-A](#) [TLE-117-01-G-DV-P](#) [TLE-102-01-G-DV](#) [TLE-108-01-G-DV-K](#) [TLE-105-01-G-DV-K-TR](#) [TLE-110-01-G-DV-A](#) [TLE-105-01-G-DV-A](#) [TLE-125-01-G-DV-A](#) [TLE-112-01-G-DV](#) [TLE-120-01-G-DV](#) [TLE-105-01-G-DV-P-TR](#) [TLE-107-01-G-DV-K-TR](#) [TLE-115-01-G-DV](#) [TLE-110-01-G-DV-A-TR](#) [TLE-103-01-G-DV-TR](#) [TLE-113-01-G-DV-A](#) [TLE-120-01-G-DV-A-K](#) [TLE-109-01-G-DV-A-K-TR](#) [TLE-122-01-G-DV-A-K](#) [TLE-128-01-G-DV-A](#) [TLE-135-01-G-DV-A-K-TR](#) [TLE-136-01-G-DV-A](#) [TLE-136-01-G-DV-A-P](#) [TLE-105-01-G-DV-P](#) [TLE-108-01-G-DV-A-P-TR](#) [TLE-110-01-G-DV-K](#) [TLE-112-01-G-DV-P](#) [TLE-112-01-G-DV-TR](#) [TLE-118-01-G-DV-K-TR](#) [TLE-103-01-G-DV-K](#) [TLE-104-01-G-DV-A-P](#) [TLE-112-01-G-DV-K-TR](#) [TLE-115-01-G-DV-P](#) [TLE-116-01-G-DV](#) [TLE-123-01-G-DV-A](#) [TLE-127-01-G-DV-A](#) [TLE-127-01-G-DV-P](#) [TLE-143-01-G-DV-A](#) [TLE-144-01-G-DV](#) [TLE-154-01-G-DV-A](#) [TLE-155-01-G-DV-A](#) [TLE-130-01-G-DV-A](#) [TLE-104-01-G-DV-K](#) [TLE-106-01-G-DV-A-P-TR](#) [TLE-109-01-G-DV-A](#) [TLE-109-01-G-DV-TR](#) [TLE-110-01-G-DV-A-P](#) [TLE-110-01-G-DV-P-TR](#) [TLE-116-01-G-DV-A-K-TR](#) [TLE-116-01-G-DV-K](#) [TLE-119-01-G-DV-P](#) [TLE-124-01-G-DV-A](#) [TLE-126-01-G-DV](#) [TLE-129-01-G-DV-A](#) [TLE-138-01-G-DV-A](#) [TLE-140-01-G-DV-A](#) [TLE-141-01-G-DV-A](#) [TLE-153-01-G-DV-A](#) [TLE-105-01-G-DV-TR](#)