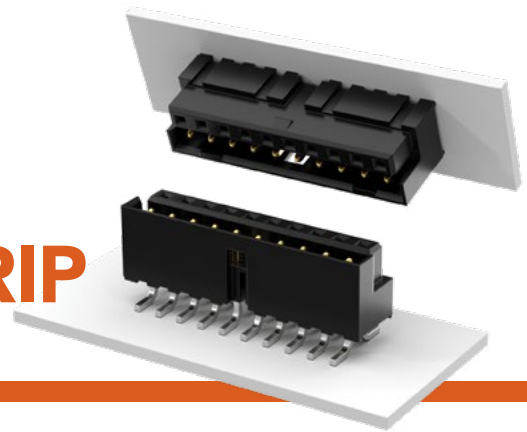


# SELF MATING HERMAPHRODITIC STRIP

(2.00 mm) .0787" PITCH • LS2 SERIES



**LS2**  
Mates:  
LS2

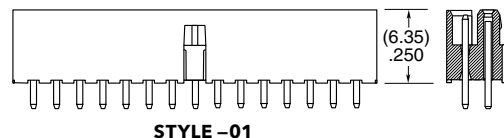
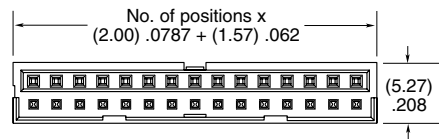
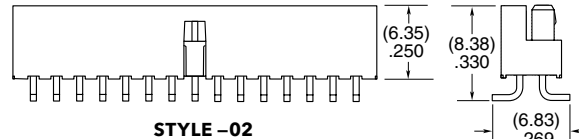
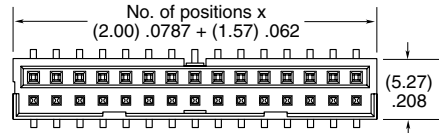
## SPECIFICATIONS

**Insulator Material:**  
Black Liquid Crystal  
Polymer  
**Contact Material:**  
Phosphor Bronze  
**Plating:**  
Au or Sn over  
50 μ" (1.27 μm) Ni  
**Current Rating:**  
3.2 A per pin  
(6 adjacent pins powered)  
**Voltage Rating:**  
475 VAC mated with LS2  
**Operating Temp Range:**  
-55 °C to +125 °C

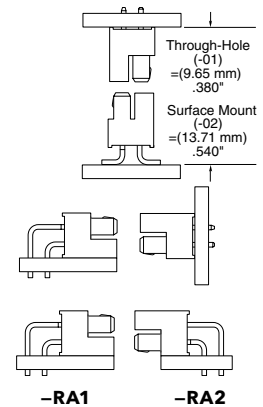
## PROCESSING

**Lead-Free Solderable:**  
Yes  
**SMT Lead Coplanarity:**  
(0.15 mm) .006" max\*  
\*(.004" stencil solution  
may be available; contact  
IPG@samtec.com)

LS2	1	NO. PINS PER ROW	LEAD STYLE	PLATING OPTION	D	TAIL OPTION	OPTION
		05, 10, 15, 20, 25, 30	-01 = Through-hole -02 = Surface Mount	-F = Gold flash on contact, Matte Tin on tail -L = 10 μ" (0.25 μm) Gold on contact, Matte Tin on tail		-01 only -RA1 = Right-angle (Shroud Down) -RA2 = Right-angle (Shroud Up)	-K = (6.30 mm) .248" DIA Polyimide Film Pick & Place Pad (-02 only) -TR = Tape & Reel -FR = Full Reel Tape & Reel (must order max. quantity per reel; contact Samtec for quantity breaks)



## APPLICATION

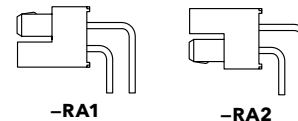


-RA1 -RA2

## ALSO AVAILABLE

MOQ Required

Alignment pin  
Other platings  
Other stack heights



-RA1 -RA2

**Note:**  
Some lengths, styles and  
options are non-standard,  
non-returnable.

# Mouser Electronics

Authorized Distributor

Click to View Pricing, Inventory, Delivery & Lifecycle Information:

## Samtec:

[LS2-110-01-F-D-RA1](#) [LS2-130-01-L-D](#) [LS2-120-01-L-D-RA1](#) [LS2-115-01-F-D-RA2](#) [LS2-110-01-F-D](#) [LS2-115-01-L-D-RA1](#) [LS2-105-01-F-D-RA1](#) [LS2-115-01-L-D](#) [LS2-115-01-F-D](#) [LS2-105-01-L-D](#) [LS2-105-01-L-D-RA1](#) [LS2-120-01-L-D-RA2](#) [LS2-105-01-F-D-RA2](#) [LS2-105-01-F-D](#) [LS2-105-02-F-D](#) [LS2-110-02-F-D-K-TR](#) [LS2-110-01-L-D-RA2](#) [LS2-110-01-L-D](#) [LS2-115-01-F-D-RA1](#) [LS2-110-01-L-D-RA1](#) [LS2-120-01-L-D](#) [LS2-105-01-S-D](#) [LS2-110-01-S-D-RA1](#) [LS2-125-01-L-D-RA1](#) [LS2-130-02-L-D](#) [LS2-130-02-L-D-A-K-TR](#) [LS2-110-01-F-D-RA2](#) [LS2-105-01-SM-D-RA1](#) [LS2-110-01-SM-D-RA2](#) [LS2-115-02-F-D-K-TR](#) [LS2-125-02-L-D-K](#) [LS2-125-02-S-D-K-TR](#) [LS2-130-01-F-D-RA1-TR](#) [LS2-105-01-LM-D-RA2](#) [LS2-115-02-S-D-A](#) [LS2-115-02-L-D-A](#) [LS2-105-02-L-D-K-TR](#) [LS2-105-02-S-D-TR](#) [LS2-105-02-SM-D-TR](#) [LS2-110-01-F-D-RA2-TR](#) [LS2-115-01-F-D-RA1-TR](#) [LS2-125-02-L-D-K-TR](#) [LS2-110-01-S-D-RA1-TR](#) [LS2-120-02-G-D](#) [LS2-105-01-FM-D-RA1](#) [LS2-115-02-L-D-A-K-TR](#) [LS2-110-02-S-D-TR](#) [LS2-115-01-F-D-RA2-TR](#) [LS2-105-01-LM-D-RA1](#) [LS2-105-01-LM-D-RA1-TR](#) [LS2-110-02-L-D-A-K-TR](#) [LS2-115-02-G-D](#) [LS2-105-01-L-D-RA2-TR](#) [LS2-115-01-L-D-RA2-TR](#) [LS2-120-01-F-D-RA2-TR](#) [LS2-120-01-L-D-RA1-TR](#) [LS2-105-02-SM-D-K-TR](#) [LS2-110-02-L-D-A](#) [LS2-120-02-S-D-K-TR](#) [LS2-105-01-F-D-RA1-TR](#) [LS2-115-01-L-D-RA1-TR](#) [LS2-115-01-SM-D-RA1](#) [LS2-130-02-L-D-K-TR](#) [LS2-105-01-LM-D](#) [LS2-105-01-S-D-TR](#) [LS2-105-02-L-D-A-K](#) [LS2-110-01-L-D-RA1-TR](#) [LS2-110-01-LM-D-RA1](#) [LS2-110-02-F-D-A](#) [LS2-120-02-S-D-TR](#) [LS2-110-01-S-D-TR](#) [LS2-115-02-F-D-A](#) [LS2-120-02-F-D-K-TR](#) [LS2-120-02-L-D-A](#) [LS2-105-01-FM-D](#) [LS2-105-01-L-D-RA1-TR](#) [LS2-130-01-L-D-RA1-TR](#) [LS2-120-02-L-D-K-TR](#) [LS2-130-02-L-D-TR](#) [LS2-105-01-F-D-RA2-TR](#) [LS2-105-01-F-D-TR](#) [LS2-110-01-S-D-RA2-TR](#) [LS2-110-01-LM-D](#) [LS2-115-01-SM-D](#) [LS2-125-01-L-D-RA1-TR](#) [LS2-130-02-L-D-A](#) [LS2-105-02-L-D-A](#) [LS2-120-02-F-D-TR](#) [LS2-115-01-G-D-TR](#) [LS2-105-01-L-D-TR](#) [LS2-110-01-LM-D-RA2](#) [LS2-115-02-L-D-K-TR](#) [LS2-105-01-S-D-RA2-TR](#) [LS2-105-01-SM-D](#) [LS2-110-02-F-D-TR](#) [LS2-125-01-S-D-RA2-TR](#) [LS2-130-01-L-D-TR](#) [LS2-120-02-L-D-A-K](#) [LS2-110-01-F-D-TR](#) [LS2-110-02-G-D](#)