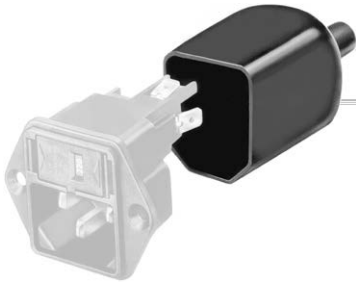


Rear Cover



E.g. DG11 with rear cover

See below:
[Approvals and Compliances](#)

Description

- The terminals of the SCHURTER appliance couplers can be protected against unintentional contact by the use of an insulation cover on the rear side. ,
- The flexible rear covers are made of black PVC and can easily be mounted from the rear to the corresponding appliance couplers.
- The covers do not insulate or hold in position live parts of opposite polarity.
- The protective covers may not be worked with hot air.

References

Mating cover to

Weblinks

[pdf data sheet](#), [html datasheet](#), [General Product Information](#), [Approvals](#), [Distributor-Stock-Check](#), [Accessories](#), [Detailed request for product](#)

Approvals and Compliances

Detailed information on product approvals, code requirements, usage instructions and detailed test conditions can be looked up in [Details about Approvals](#)

SCHURTER products are designed for use in industrial environments. They have approvals from independent testing bodies according to national and international standards. Products with specific characteristics and requirements such as required in the automotive sector according to IATF 16949, medical technology according to ISO 13485 or in the aerospace industry can be offered exclusively with customer-specific, individual agreements by SCHURTER.



Application standards

Application standards where the product can be used

Organization	Design	Standard	Description
	Designed for applications acc.	IEC/UL 62368-1	IEC 62368-1 includes the basic requirements for safety of audio, video, information technology and office equipment.

Compliances

The product complies with following Guide Lines

Identification	Details	Initiator	Description
	RoHS	SCHURTER AG	Directive RoHS 2011/65/EU, Amendment (EU) 2015/863
	REACH	SCHURTER AG	On 1 June 2007, Regulation (EC) No 1907/2006 on the Registration, Evaluation, Authorization and Restriction of Chemicals 1 (abbreviated as "REACH") entered into force.

All Variants

Suitable for	Order Number
GSF1	0098.0078
C20F, C22F, DC11, DC12, KEA, KEB1, 1092, 4707, 4721, 4723, 4793, 4798, 5130, 5200, 5220, 5707, 6200, 6202, 6205, 6220, 6600-3, 6600-4, 6600-5, 6602-4	0859.0047
FGS, KFS, KFX, 5003, 5110, 5120, 5123, 5124, 6067, 6100-3, 6100-4, 6102-3, 6102-5	0859.0048
DC12, KEC, KFA, KFB1, KFC	0859.0072
FKH, FKHD, FKJ, FKID, KD, 5145, 6135, 6145, 6762, 6765	0859.0074
KEB2, KFB2, 0723, 4719, 4797	0859.0075
DD12, DD14, EC11, KE, KM, KMF	0859.0076
CD	0859.0077

Suitable for	Order Number
CE, EC12, KE	0859.0108
CG, DF11, DF12, EF11, KG	0859.0109
1061, 6010, 6015, 6061, 6062, 6063, 6065, 6066, 6067, 6100-3, 6100-4, 6102-3, 6102-5, 6110-3, 6110-4, 6120-3, 6120-5	4311.9401
1061, 6010, 6015, 6061, 6062, 6063, 6065, 6066, 6067, 6100-3, 6100-4, 6102-3, 6102-5, 6110-3, 6110-4, 6120-3, 6120-5	4311.9402
DC11, KEB1, 1060, 1062, 1064, 1065, 1066, 1074, 1092, 4707, 6200, 6202, 6205, 6220	4311.9403

For new design please use: <https://www.schurter.com/en/datasheet/RC320>

Most Popular.

Availability for all products can be searched real-time: <https://www.schurter.com/en/Stock-Check/Stock-Check-SCHURTER>

Packaging unit	100 Pcs
-----------------------	---------

Mouser Electronics

Authorized Distributor

Click to View Pricing, Inventory, Delivery & Lifecycle Information:

Schurter:

[0859.0109](#) [0859.0076](#) [0859.0072](#) [0859.0074](#) [0859.0047](#) [0859.0048](#) [0859.0075](#) [0098.0078](#) [0859.0077](#) [0859.0081](#)
[0859.0086](#) [0859.0108](#) [0886.0101](#) [0886.0149](#) [0886.0158](#) [0886.0163](#) [0886.0165](#) [0886.0186](#) [0886.0193](#) [0886.0204](#)
[0886.0223](#) [0886.0224](#) [0886.0227](#) [0886.0254](#) [0886.0279](#) [0886.0286](#) [0886.0291](#) [0886.0296](#) [0886.0314](#) [0886.0332](#)
[0886.0344](#) [0886.0355](#) [0886.0369](#) [0886.0378](#) [0886.0392](#) [0886.0396](#) [0886.0398](#) [0886.0408](#) [0886.0412](#) [0886.0415](#)
[0886.0419](#) [0886.0424](#) [0886.0438](#) [0886.0439](#) [0886.0445](#) [0886.0446](#) [0886.0451](#) [0886.0461](#) [0886.0464](#) [0886.0471](#)
[0886.0477](#) [0886.0482](#) [0886.0507](#) [0886.0543](#) [0886.0573](#) [0886.0602](#) [0886.0606](#) [0886.0611](#) [0886.0618](#) [0886.0619](#)
[0886.0624](#) [0886.0628](#) [0886.0635](#) [0886.0636](#) [0886.0639](#) [0886.0656](#) [0886.0659](#) [0886.0664](#) [0886.0668](#) [0886.0674](#)
[0886.0675](#) [0886.0677](#) [4320.0012](#) [4320.0015](#) [4320.0016](#) [4320.0017](#) [0886.0243](#) [0886.0695](#) [0886.0696](#) [4311.9401](#)
[4311.9402](#) [4311.9403](#) [4311.9404](#) [0886.017](#) [0886.034](#) [0886.042](#) [0886.049](#) [0886.058](#) [0886.059](#) [0886.07](#)
[0886.0706](#) [4320.001](#) [4311.9601](#)