

# PCB Surface Mount Connectors

## SMPM and SMP Connectors

Introducing the SMPM and SMP Male PCB Surface Mount Blindmate connectors with RF Performance from 26.5 GHz and 18 GHz respectively. Rugged design to accommodate both radial and axial misalignment, caused by shock and vibration in military and harsh environments.

Available in Smooth Bore, Limited Detent and Full Detent versions to work with our bullet adapters. Intermateable to other industry connectors such as the GPO® and GPPO®. Contact and body materials gold plated beryllium copper (BeCu). Designed to conform to DSCC 94007, 94008 and MIL-STD-348.



## Applications

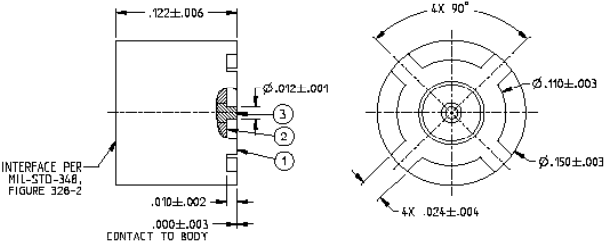
- Aerospace
- Military
- Broadband
- Instrumentation
- LAN Routers
- Telecommunications
- Satellite Communication Equipment (SATCOM)

# PCB Surface Mount Connectors



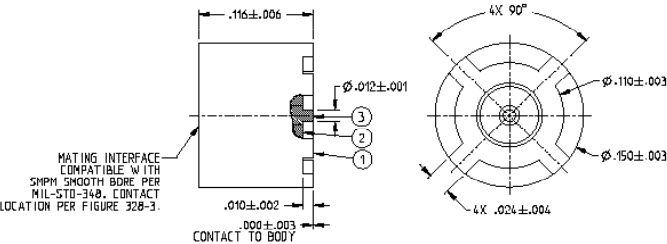
## SMPM Male, Straight Surface Mount, Full Detent

Part Number	Material	Impedance	Maximum Frequency	VSWR
125-0701-231	Gold-Plated	50 Ohms	26.5 GHz	1.5 Max



## SMPM Male, Straight, Surface Mount, Smooth Bore

Part Number	Material	Impedance	Maximum Frequency	VSWR
125-2701-221	Gold-Plated	50 Ohms	26.5 GHz	1.5 Max

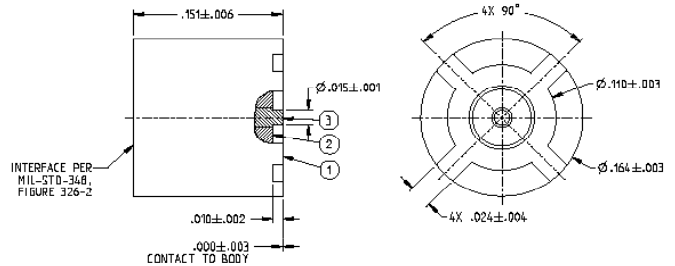


# PCB Surface Mount Connectors



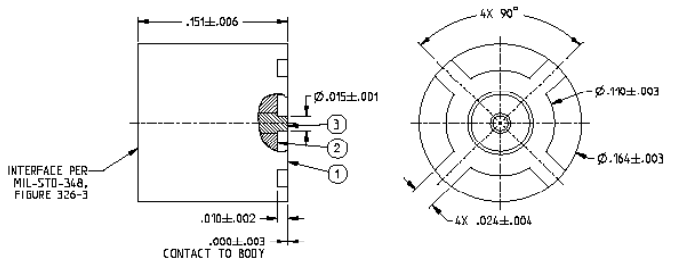
## SMP Male, Straight Surface Mount, Full Detent

Part Number	Material	Impedance	Maximum Frequency	VSWR
127-0701-221	Gold-Plated	50 Ohms	18 GHz	1.5 Max



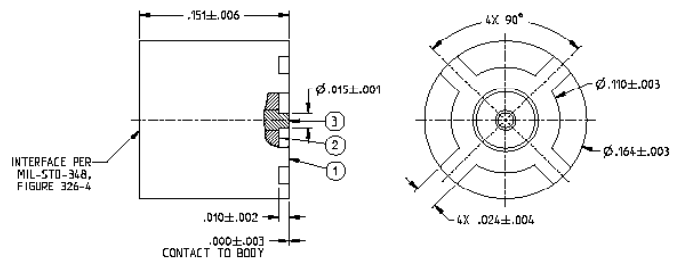
## SMP Male, Straight Surface Mount, Limited Detent

Part Number	Material	Impedance	Maximum Frequency	VSWR
127-1701-221	Gold-Plated	50 Ohms	18 GHz	1.5 Max



## SMP Male, Straight, Surface Mount, Smooth Bore

Part Number	Material	Impedance	Maximum Frequency	VSWR
127-2701-221	Gold-Plated	50 Ohms	18 GHz	1.5 Max



Asia Pacific  
+86 21 5442 7668  
ccs.asia.sales@as.cinch.com

Europe, Middle East & Africa  
+44 (0) 1245 342060  
CinchConnectivity@eu.cinch.com

North America  
+1 507.833.8822  
ccsorders@us.cinch.com

[belfuse.com/cinch](http://belfuse.com/cinch)

# Mouser Electronics

Authorized Distributor

Click to View Pricing, Inventory, Delivery & Lifecycle Information:

[Cinch Connectivity Solutions:](#)

[125-2701-221](#) [127-1701-221](#) [127-2701-221](#) [127-0701-221](#) [125-0701-231](#)