

42V_{IN} Micropower Isolated Flyback Converter with 65V/1.2A Switch

DESCRIPTION

Demonstration circuit 2138B is an isolated flyback converter featuring the LT[®]8301. This demo circuit outputs 5V from a 10V to 32V input, with a nominal of 24V. The output current capability increases with the input voltage. The standby input current of the demo circuit is less than 950 μ A (typical) at $V_{IN} = 24V$.

The Performance Summary table summarizes the performance of the demo board at room temperature. The demo circuit can be easily modified for different applications with some pre-designed transformers.

The DC2138B needs a very small minimum load (~6mA) to regulate the output voltage, thanks to the accurate current limit capability and ultralow switching frequency of LT8301 at very light load. On the board, a Zener diode is placed on the output to clamp the voltage to ~5V. This Zener is optional, and can be replaced with a 0.8k resistor.

The LT8301 is a simple-to-use monolithic isolated flyback converter. No third winding or opto-isolator is required for

regulation. The part sets the isolated output voltage with a single external resistor and integrates loop compensation and soft-start circuitry inside the IC. Boundary mode operation provides a small magnetic solution with improved load regulation. Low-ripple Burst Mode[®] operation maintains high efficiency at light loads while minimizing the output voltage ripple. A 1.2A, 65V DMOS power switch is integrated along with all high-voltage circuitry and control logic into a 5-lead ThinSOT[™] package.

The LT8301 data sheet gives a complete description of the part, operation and application information. The data sheet must be read in conjunction with this quick start guide for demo circuit 2138B.

Design files for this circuit board are available at <http://www.linear.com/demo/DC2138B>

LT, LT, LTC, LTM, Linear Technology, the Linear logo and Burst Mode are registered trademarks and ThinSOT is a trademark of Linear Technology Corporation. All other trademarks are the property of their respective owners.

PERFORMANCE SUMMARY Specifications are at $T_A = 25^\circ C$

PARAMETER	CONDITIONS	MIN	TYP	MAX	UNITS
Input Voltage		10	24	32	V
Standby Current	$I_{OUT} = 0mA, V_{IN} = 24V, V_{OUT} = 5V$		950		μA
Output Voltage	$V_{IN} = 12V \text{ to } 32V, I_{OUT} = 6mA \text{ to } 700mA$	4.75	5	5.25	V
Maximum Output Current	$V_{IN} = 12V$ $V_{IN} = 24V$	700 1000			mA mA
Output Voltage Ripple (Peak to Peak)	$V_{IN} = 24V, I_{OUT} = 1A$		90		mV
Switching Frequency	$V_{IN} = 24V, I_{OUT} = 1A$		190		kHz
Efficiency	$V_{IN} = 24V, I_{OUT} = 1A$		83.2		%

QUICK START PROCEDURE

Demo circuit 2138B is easy to set up to evaluate the performance of the LT8301. Refer to Figure 1 for proper equipment setup and follow the procedure below.

1. With power off, connect the input power supply to the board through VIN and GND terminals. Connect the load to the terminals VOUT+ and VOUT- on the board.
2. Turn on the power at the input. Increase VIN slowly to 10V.

NOTE. Make sure that the input voltage is always within spec. To operate the board with higher input/output voltage, input capacitor, output capacitor and output diode with higher voltage ratings are needed.

NOTE. To run overload tests on the demo board at high line, additional RC snubber might be needed to make sure the voltage spike at the switching node is always less than 65V.

3. Check for the proper output voltages. The output should be regulated at 5V ($\pm 5\%$).

NOTE. The LT8301 requires very small minimum load to maintain good output voltage regulation. A Zener diode is placed on the output to clamp the voltage to $\sim 5V$. This Zener is optional, and can be replaced with a 0.8k resistor.

4. Once the proper output voltage is established, adjust the input voltage and load current within the operating range and observe the output voltage regulation, transient, ripple voltage, efficiency and other parameters.

NOTE. When measuring the input or output voltage ripples, care must be taken to avoid a long ground lead on the oscilloscope probe. Measure the input or output voltage ripple by touching the probe tip directly across the VIN or VOUT capacitor terminals. See Figure 2 for proper scope probe technique.

5. Figure 5 shows the radiated EMI (Vertical Polarization) performance with the installation of the optional component (C9 560pF). The circuit passed the CISPR 25 Class 5 Peak Limit 5, with less than 2 percentage of efficiency drop at full load condition (0.7A, 14VIN).

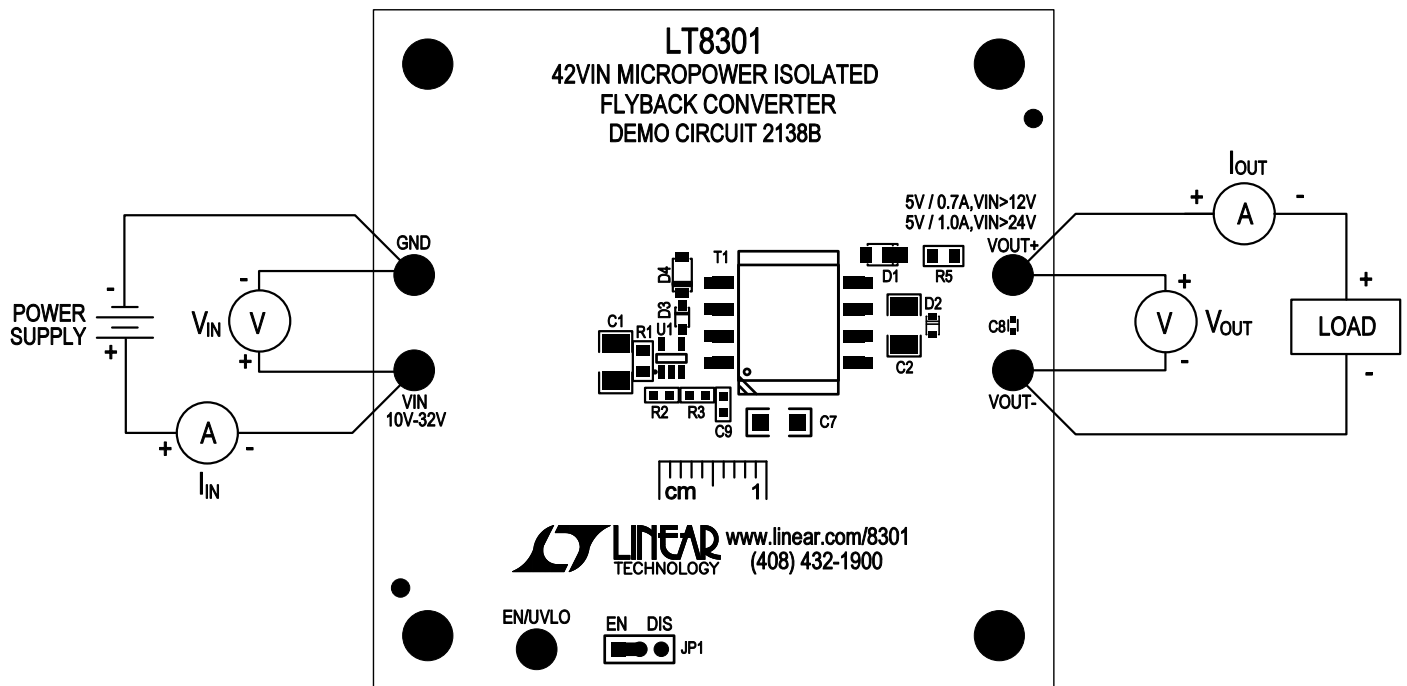


Figure 1. Proper Measurement Equipment Setup

QUICK START PROCEDURE

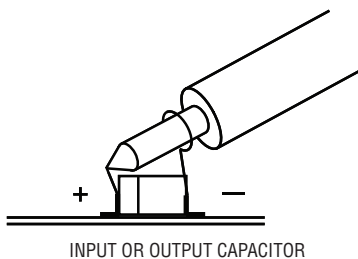


Figure 2. Proper Scope Probe Placement for Measuring Input or Output Ripple

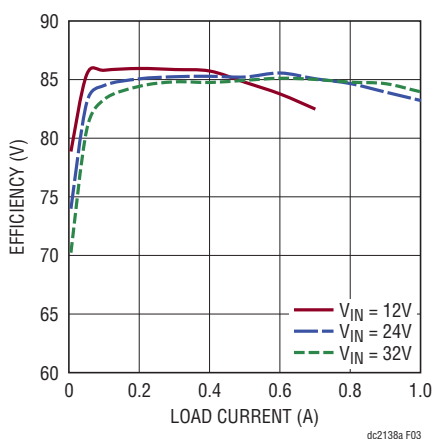


Figure 3. Typical Efficiency Curves

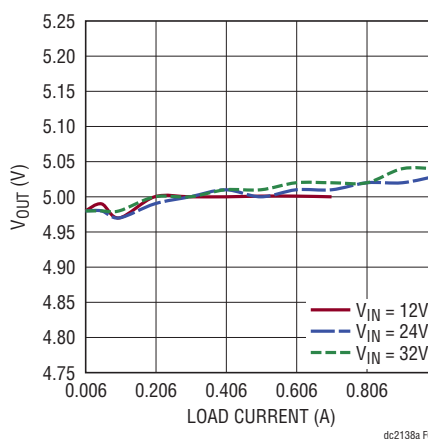


Figure 4. Typical Regulation Curves

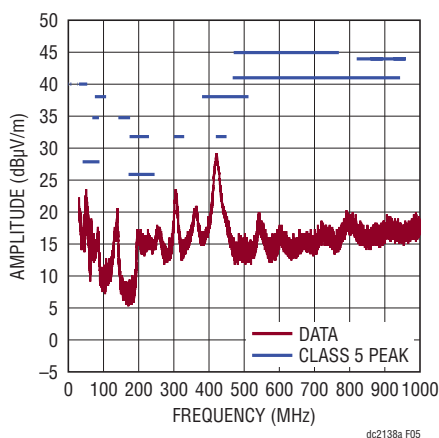


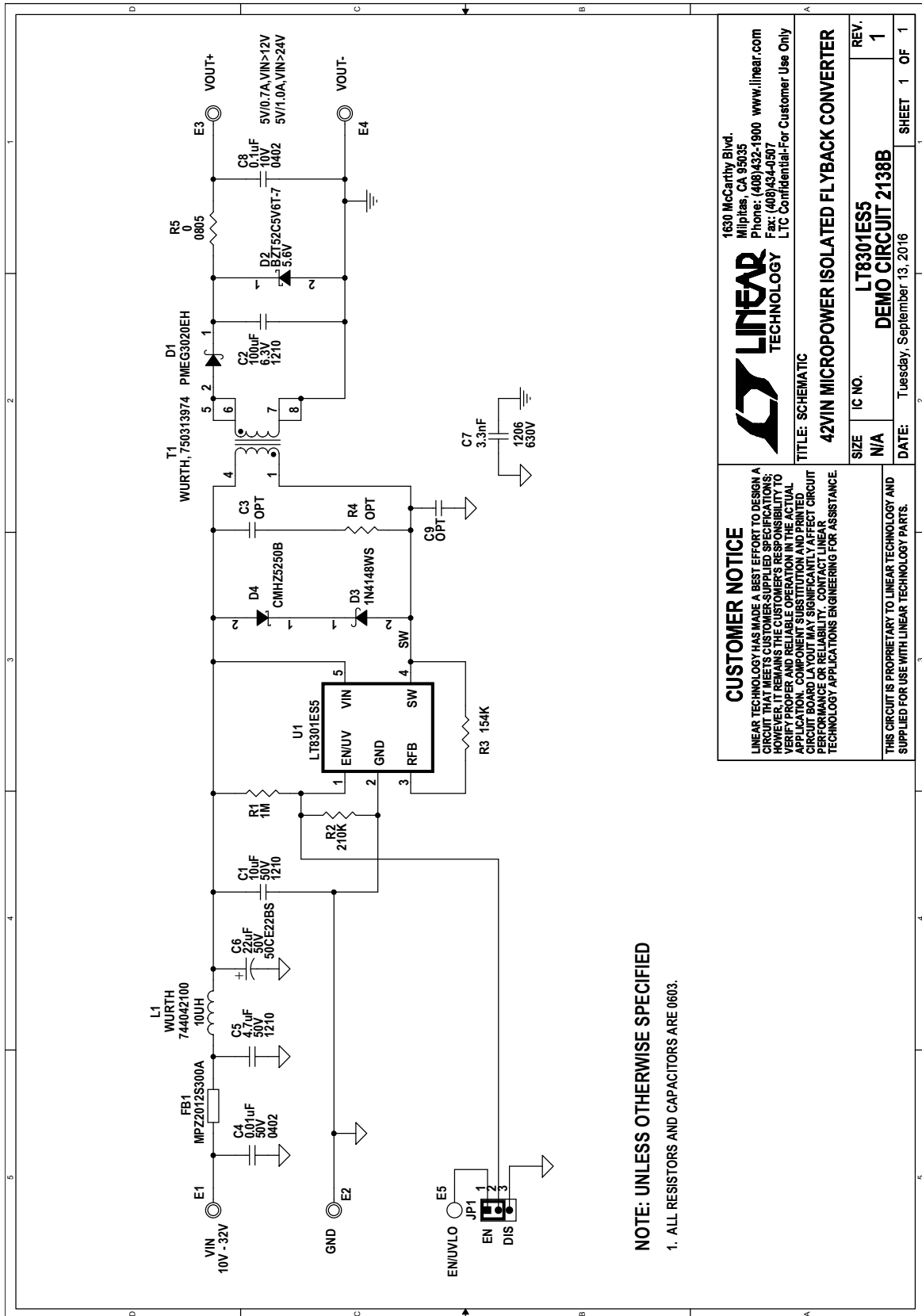
Figure 5. Radiated EMI Vertical polarization, CISPR 25 Peak Limit 5, 14VIN, 0.7A

DEMO MANUAL DC2138B

PARTS LIST

ITEM	QTY	REFERENCE	PART DESCRIPTION	MANUFACTURER/PART NUMBER
Required Circuit Components				
1	1	C1	CAP., X7R, 10µF, 50V, 10%, 1210	MURATA, GRM32ER71H106KA12L
2	1	C2	CAP., X5R, 100µF, 6.3V, 20%, 1210	MURATA, GRM32ER60J107ME20L
3	1	C4	CAP., X7R, 0.01µF, 50V, 10%, 0402	MURATA, GRM155R71H103KA88D
4	1	C5	CAP., X7R, 4.7µF, 50V, 10%, 1210	AVX, 12105C475KAT2A
5	1	C6	CAP., ALUM., 22µF, 50V	SUN ELECT., 50CE22BS
6	1	C7	CAP., X7R, 3300pF, 630V, 10%, 1206	MURATA, GRM31BR72J332KW01L
7	1	C8	CAP., X7R, 0.1µF, 10V, 10%, 0402	MURATA, GRM155R71A104KA01D
8	1	D1	DIODE, PMEG3020EH, SOD-123	NXP, PMEG3020EH
9	1	D2	DIODE, 5.6V, SOD-523	DIODES., BZT52C5V6T-7-F
10	1	D3	DIODE., 1N4148WS SOD323	DIODES., 1N4148WS-7-F
11	1	D4	DIODE, CMHZ5250B, SOD-123	CENTRAL., CMHZ5250B
12	1	FB1	BEAD, 0805	TDK, MPZ2012S300A
13	1	L1	IND., 10µH	WURTH, 744042100
14	1	R1	RES., CHIP, 1M, 1/8W, 1% 0805	VISHAY, CRCW08051M00FKEA
15	1	R2	RES., CHIP, 210k, 1/10W, 1% 0603	VISHAY, CRCW0603210KFKEA
16	1	R3	RES., CHIP, 154k, 1/10W, 1% 0603	VISHAY, CRCW0603154KFKEA
17	1	R5	RES., CHIP, 0Ω, 1/8W, 1% 0805	VISHAY, CRCW08050000Z0EA
18	1	T1	TRANSFORMER, 750313974	WURTH, 750313974
19	1	U1	I.C. FLYBACK CONVERTER, SOT23-5	LINEAR TECH., LT8301ES5#PBF
Additional Demo Board Circuit Components				
1	0	R4(OPT)	RES., CHIP, 0805	
2	0	C3, C9(OPT)	CAP., 0603	
Hardware: For Demo Board Only				
1	5	E1-E5	TESTPOINT, TURRET, 0.094" PBF	MILL-MAX, 2501-2-00-80-00-00-07-0
2	1	JP1	3 PIN 0.079" SINGLE ROW HEADER	SAMTEC, TMM103-02-L-S
3	1	XJP1	SHUNT, 0.079" CENTER	SAMTEC, 2SN-BK-G

SCHEMATIC DIAGRAM



LINEAR TECHNOLOGY
 1630 McCarthy Blvd.
 Milpitas, CA 95035
 Phone: (408)432-1900 www.linear.com
 Fax: (408)434-4937
 LTC Confidential-For Customer Use Only

TITLE: SCHEMATIC
42VIN MICROPOWER ISOLATED FLYBACK CONVERTER

SIZE	IC NO.	REV.
N/A	LT8301ES5	1
DATE: Tuesday, September 13, 2016		SHEET 1 OF 1

CUSTOMER NOTICE
 LINEAR TECHNOLOGY HAS MADE A BEST EFFORT TO DESIGN A CIRCUIT THAT MEETS CUSTOMER-SUPPLIED SPECIFICATIONS; HOWEVER, IT REMAINS THE CUSTOMER'S RESPONSIBILITY TO VERIFY PROPER AND RELIABLE OPERATION IN THE ACTUAL APPLICATION. COMPONENT SUBSTITUTION AND PRINTED CIRCUIT BOARD LAYOUT MAY SIGNIFICANTLY AFFECT CIRCUIT PERFORMANCE OR RELIABILITY. CONTACT LINEAR TECHNOLOGY APPLICATIONS ENGINEERING FOR ASSISTANCE.

THIS CIRCUIT IS PROPRIETARY TO LINEAR TECHNOLOGY AND SUPPLIED FOR USE WITH LINEAR TECHNOLOGY PARTS.

DEMO MANUAL DC2138B

DEMONSTRATION BOARD IMPORTANT NOTICE

Linear Technology Corporation (LTC) provides the enclosed product(s) under the following **AS IS** conditions:

This demonstration board (DEMO BOARD) kit being sold or provided by Linear Technology is intended for use for **ENGINEERING DEVELOPMENT OR EVALUATION PURPOSES ONLY** and is not provided by LTC for commercial use. As such, the DEMO BOARD herein may not be complete in terms of required design-, marketing-, and/or manufacturing-related protective considerations, including but not limited to product safety measures typically found in finished commercial goods. As a prototype, this product does not fall within the scope of the European Union directive on electromagnetic compatibility and therefore may or may not meet the technical requirements of the directive, or other regulations.

If this evaluation kit does not meet the specifications recited in the DEMO BOARD manual the kit may be returned within 30 days from the date of delivery for a full refund. **THE FOREGOING WARRANTY IS THE EXCLUSIVE WARRANTY MADE BY THE SELLER TO BUYER AND IS IN LIEU OF ALL OTHER WARRANTIES, EXPRESSED, IMPLIED, OR STATUTORY, INCLUDING ANY WARRANTY OF MERCHANTABILITY OR FITNESS FOR ANY PARTICULAR PURPOSE. EXCEPT TO THE EXTENT OF THIS INDEMNITY, NEITHER PARTY SHALL BE LIABLE TO THE OTHER FOR ANY INDIRECT, SPECIAL, INCIDENTAL, OR CONSEQUENTIAL DAMAGES.**

The user assumes all responsibility and liability for proper and safe handling of the goods. Further, the user releases LTC from all claims arising from the handling or use of the goods. Due to the open construction of the product, it is the user's responsibility to take any and all appropriate precautions with regard to electrostatic discharge. Also be aware that the products herein may not be regulatory compliant or agency certified (FCC, UL, CE, etc.).

No License is granted under any patent right or other intellectual property whatsoever. **LTC assumes no liability for applications assistance, customer product design, software performance, or infringement of patents or any other intellectual property rights of any kind.**

LTC currently services a variety of customers for products around the world, and therefore this transaction **is not exclusive**.

Please read the DEMO BOARD manual prior to handling the product. Persons handling this product must have electronics training and observe good laboratory practice standards. **Common sense is encouraged.**

This notice contains important safety information about temperatures and voltages. For further safety concerns, please contact a LTC application engineer.

Mailing Address:

Linear Technology
1630 McCarthy Blvd.
Milpitas, CA 95035

Copyright © 2004, Linear Technology Corporation

Mouser Electronics

Authorized Distributor

Click to View Pricing, Inventory, Delivery & Lifecycle Information:

[Analog Devices Inc.:](#)

[DC2138B](#)