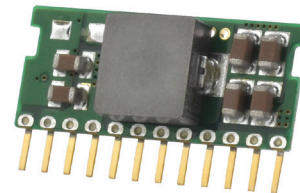


SERIES: P783F-S | **DESCRIPTION:** NON-ISOLATED SWITCHING REGULATOR

FEATURES

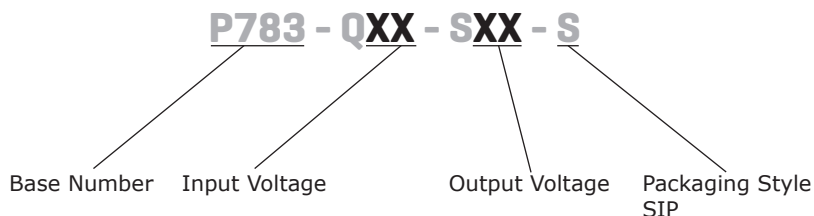
- 3A of output current
- open frame design
- high efficiency up to 97%
- EN62368 approved
- no-load input current as low as 2mA
- output short circuit protection
- wide operating temp: -40°C to +85°C



| MODEL | input voltage | | output voltage (Vdc) | output current max (mA) | output power max (W) | ripple and noise ¹ max (mVp-p) | efficiency typ (%) |
|-----------------|---------------|----------------|-------------------------|-------------------------------|----------------------------|---|--------------------------|
| | typ (Vdc) | range (Vdc) | | | | | |
| P783F-Q24-S3-S | 24 | 8~36 | 3.3 | 3000 | 9.9 | 70 | 90 |
| P783F-Q24-S5-S | 24 | 8~36 | 5 | 3000 | 15 | 70 | 93 |
| P783F-Q24-S6-S | 24 | 10~36 | 6.5 | 3000 | 19.5 | 70 | 94 |
| P783F-Q24-S9-S | 24 | 13~36 | 9 | 3000 | 27 | 70 | 95 |
| P783F-Q24-S12-S | 24 | 16~36 | 12 | 3000 | 36 | 100 | 97 |
| P783F-Q24-S15-S | 24 | 19~36 | 15 | 3000 | 45 | 100 | 97 |

Notes: 1. ripple and noise are measured at 20 MHz BW

PART NUMBER KEY



INPUT

| parameter | conditions/description | min | typ | max | units |
|-------------------------|------------------------|-----|-----|-----|-------|
| operating input voltage | 3.3 V output | 8 | 24 | 36 | Vdc |
| | 5 V output | 8 | 24 | 36 | Vdc |
| | 6.5 V output | 10 | 24 | 36 | Vdc |
| | 9 V output | 13 | 24 | 36 | Vdc |
| | 12 V output | 16 | 24 | 36 | Vdc |
| | 15 V output | 19 | 24 | 36 | Vdc |
| reverse polarity input | avoid / not protected | | | | |

OUTPUT

| parameter | conditions/description | min | typ | max | units |
|-------------------------|----------------------------------|-----|------|-------|-------|
| capacitive load | 3.3 V output | | | 1,000 | μF |
| | 5 V output | | | 680 | μF |
| | 6.5 V output | | | 330 | μF |
| | 9 V output | | | 330 | μF |
| | 12 V output | | | 330 | μF |
| | 15 V output | | | 330 | μF |
| line regulation | full load, input voltage range | | ±0.5 | ±1.0 | % |
| load regulation | from 10% to 100% load | | ±0.5 | ±1.0 | % |
| voltage accuracy | 0~100% load, input voltage range | | ±2 | ±3 | % |
| switching frequency | PWM mode | 100 | 250 | 400 | kHz |
| temperature coefficient | -40°C ~ 85°C | | | ±0.03 | %/°C |
| trimmability | see trim table | | | | |
| CTRL | module on: CTRL open or high | | 4.5 | 14 | Vdc |
| | module off: CTRL low to GND | | 0 | 0.8 | Vdc |

PROTECTIONS

| parameter | conditions/description | min | typ | max | units |
|--------------------------|--------------------------------|-----|-----|-----|-------|
| short circuit protection | continuous, automatic recovery | | | | |

SAFETY AND COMPLIANCE

| parameter | conditions/description | min | typ | max | units |
|---------------------|--|-------|-----|-----|---------|
| safety approvals | EN62368-1 | | | | |
| conducted emissions | CISPR32/EN55032 Class B | | | | |
| ESD | IEC/EN 61000-4-2, contact ±6 kV, perf. criteria B | | | | |
| radiated immunity | IEC/EN 61000-4-3, 10V/m, perf. criteria A | | | | |
| EFT/burst | IEC/EN 61000-4-4, ±1 kV, perf. criteria B (see recommended circuit) | | | | |
| surge | IEC/EN 61000-4-5, Class B, line to line ±1 kV, perf. criteria B | | | | |
| EMI/EMC | IEC/EN 61000-4-6 Class A, 3 Vr.ms (see recommended circuit) perf. criteria A | | | | |
| MTBF | as per MIL-HDBK-217F @ 25°C | 2,000 | | | K hours |
| RoHS | yes | | | | |

ENVIRONMENTAL

| parameter | conditions/description | min | typ | max | units |
|-----------------------|------------------------|-----|-----|-----|-------|
| operating temperature | see derating curve | -40 | | 85 | °C |
| storage temperature | | -55 | | 125 | °C |
| storage humidity | non-condensing | 5 | | 95 | % |

SOLDERABILITY

| parameter | conditions/description | min | typ | max | units |
|---------------|------------------------|-----|-----|-----|-------|
| pin soldering | for 10 seconds | | | 260 | °C |

MECHANICAL

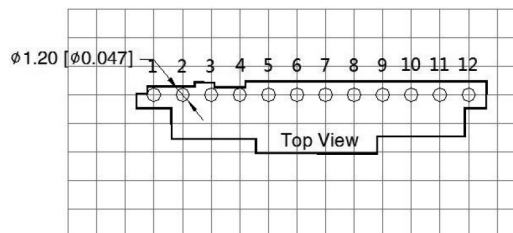
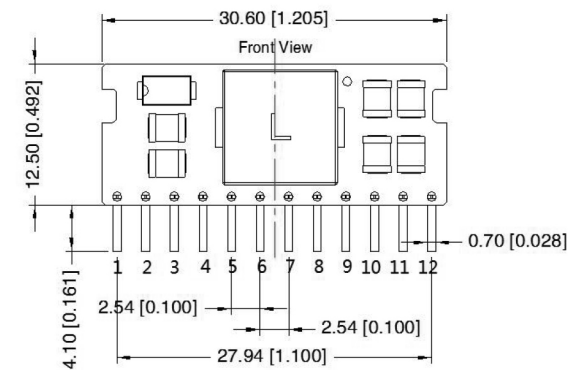
| parameter | conditions/description | min | typ | max | units |
|---------------|---|-----|-----|-----|-------|
| dimensions | 32.15 x 14.85 x 9.05 | | | | mm |
| case material | flame retardant and heat-resistant plastic (UL94 V-0) | | | | |
| weight | | | 4.0 | | g |

MECHANICAL DRAWING

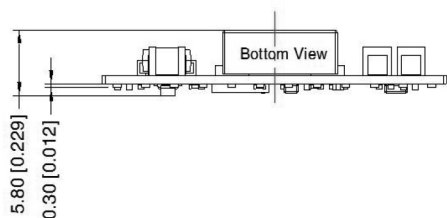
units: mm [inches]

tolerance: ±0.50 [±0.020]

pin section tolerance: ±0.10 mm [±0.004]



Note: Grid 2.54*2.54mm



| PIN CONNECTIONS | |
|-----------------|----------|
| Pin | Function |
| 1 | Ctrl |
| 2, 3, 4 | Vin |
| 5, 6, 7, 8 | GND |
| 9, 10 | +Vo |
| 11 | +Vo |
| 12 | Trim |

DERATING CURVES

Temperature Derating Curve

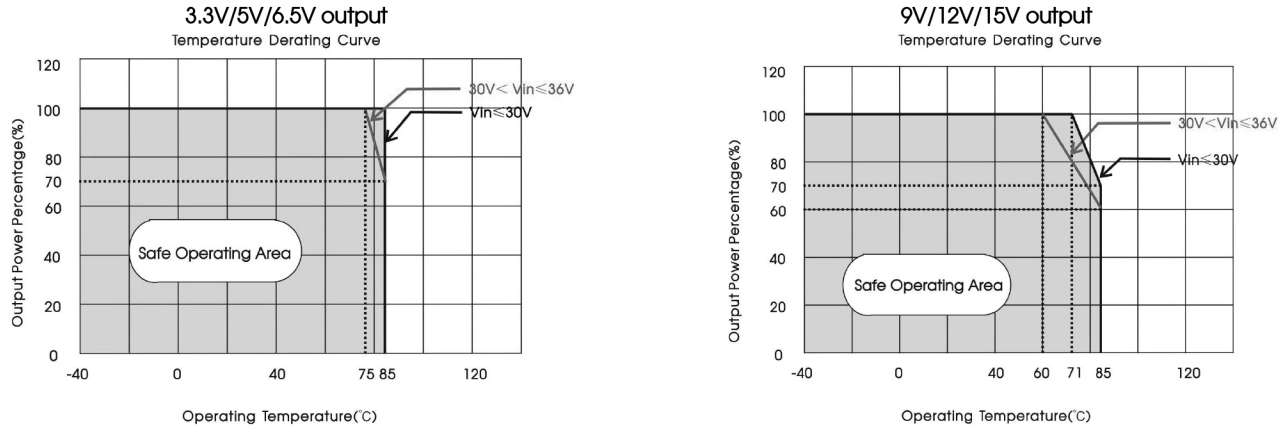


Figure 1

TYPICAL APPLICATION CIRCUIT

Figure 2

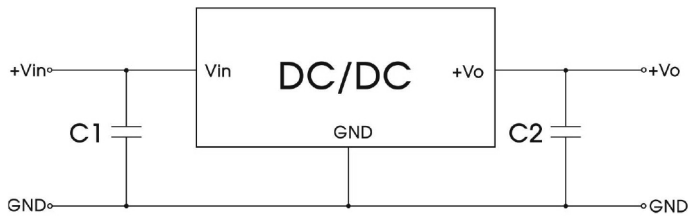


Table 1

| Part No. | C1 (ceramic capacitor) | C2 (ceramic capacitor) |
|----------------|---------------------------|---------------------------|
| P783-Q24-S3-S | 100μF/50V | 22μF/10V |
| P783-Q24-S5-S | | 22μF/10V |
| P783-Q24-S6-S | | 22μF/10V |
| P783-Q24-S9-S | | 22μF/16V |
| P783-Q24-S12-S | | 22μF/25V |
| P783-Q24-S15-S | | 22μF/25V |

- Note:
1. The required capacitors C1 and C2 must be connected as close as possible to the terminals of the module;
 2. Refer to Table 1 for C1 and C2 capacitor values. For certain applications, increased values and/or tantalum or low ESR electrolytic capacitors may also be used instead;
 3. Converter cannot be used for hot swap and with output in parallel.

EMC RECOMMENDED CIRCUIT

Figure 3

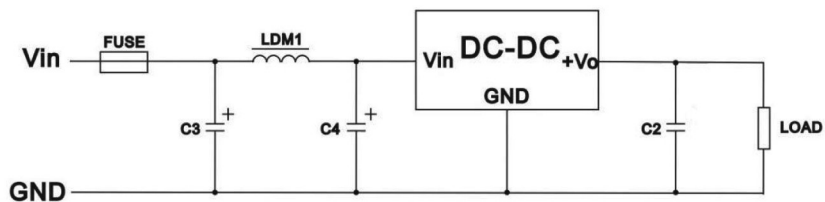


Table 2

| | FUSE | C3 | LDM1 | C4 | C2 |
|-----------|---|-----------------|------------|-----------------|-----------------------------|
| Emissions | select fuse value according to actual input current | 100 μ F/50V | 22 μ H | 100 μ F/50V | refer to the C2 in Figure X |
| Immunity | | | | 680 μ F/50V | |

TRIM FUNCTION FOR OUTPUT VOLTAGE ADJUSTMENT

Figure 4

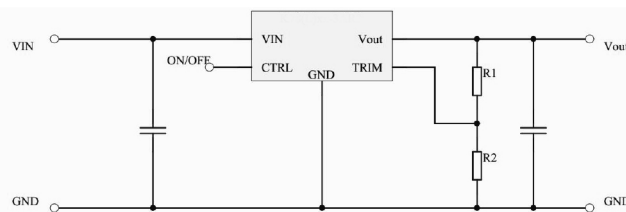


Table 3

| Vout nom. | 3.3 Vdc | | 5.0 Vdc | | 6.5 Vdc | | 9.0 Vdc | | 12 Vdc | | 15 Vdc | |
|-----------|---------|-----|---------|------|---------|------|---------|-----|--------|-------|--------|-----|
| Vout adj. | R1 | R2 | R1 | R2 | R1 | R2 | R1 | R2 | R1 | R2 | R1 | R2 |
| 3 | 500K | | | | | | | | | | | |
| 3.3 | | | | | | | | | | | | |
| 4 | | 95K | 195K | | | | | | | | | |
| 4.5 | | 52K | 470K | | | | | | | | | |
| 5 | | | | | | | | | | | | |
| 5.5 | | | | 125K | 330K | | | | | | | |
| 6 | | | | 58K | 750K | | | | | | | |
| 6.5 | | | | | | | | | | | | |
| 7 | | | | | | 140K | 220K | | | | | |
| 8 | | | | | | 40K | 520K | | | | | |
| 9 | | | | | | | | | | | | |
| 10 | | | | | | | | 65K | 530K | | | |
| 11 | | | | | | | | 28K | 1180K | | | |
| 12 | | | | | | | | | | | | |
| 13 | | | | | | | | | 110K | 590K | | |
| 14 | | | | | | | | | 50K | 1290K | | |
| 15 | | | | | | | | | | | | |
| 16 | | | | | | | | | | | | 90K |
| 17 | | | | | | | | | | | | 40K |

REVISION HISTORY

| rev. | description | date |
|------|--|------------|
| 1.0 | initial release | 06/29/2020 |
| 1.01 | weight updated in the mechanical section | 04/07/2021 |

The revision history provided is for informational purposes only and is believed to be accurate.



Headquarters
20050 SW 112th Ave.
Tualatin, OR 97062
800.275.4899

Fax 503.612.2383
cui.com
techsupport@cui.com

CUI offers a two (2) year limited warranty. Complete warranty information is listed on our website.

CUI reserves the right to make changes to the product at any time without notice. Information provided by CUI is believed to be accurate and reliable. However, no responsibility is assumed by CUI for its use, nor for any infringements of patents or other rights of third parties which may result from its use.

CUI products are not authorized or warranted for use as critical components in equipment that requires an extremely high level of reliability. A critical component is any component of a life support device or system whose failure to perform can be reasonably expected to cause the failure of the life support device or system, or to affect its safety or effectiveness.