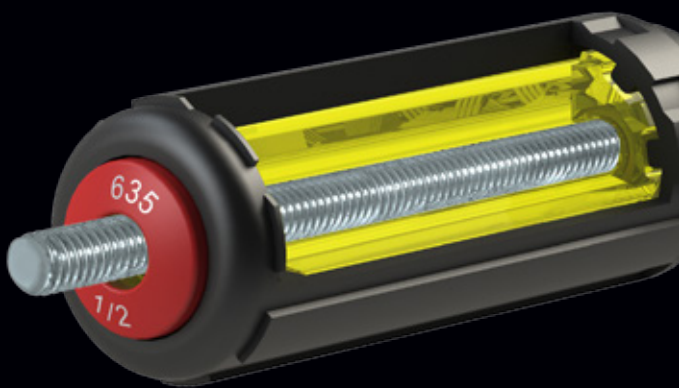


DRIVERS

SCREW, NUT, MULTI & ADJUSTABLE



As the tradesperson's needs change, so do Klein's products. The latest additions to our line of drivers feature added functionality to increase productivity and decrease the number of tools on the belt or in the bag.



4-IN-1 ELECTRONICS SCREWDRIVERS



Four different bits in one tool

- Rotating cap for optimum and precise control
- Heat-treated precision machined tip for greater strength

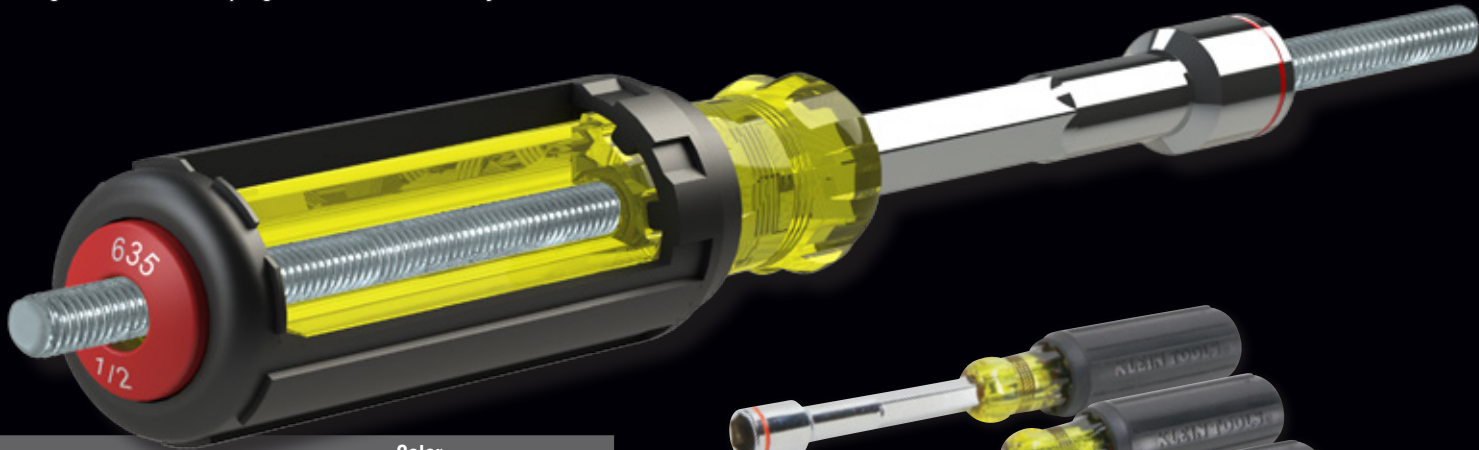
Cat. No.	Tips	Overall Length
32581	#0 & #00 Phillips and 1/8" & 3/32" Slotted	6.5" (165 mm)
32585	T7, T8, T10 and T15 tamper-proof TORX®	6.5" (165 mm)



Completely hollow handle for unlimited threaded rod lengths

- Wrench assist for additional torque
- Magnetic feature helps grab hex nuts securely

**HEAVY-DUTY
NUT DRIVERS**



Cat. No.	Hex Sizes	Color Code	Overall Length
635-1/4	1/4"	Red	9" (229 mm)
635-5/16	5/16"	Yellow	
635-3/8	3/8"	Blue	
635-7/16	7/16"	Brown	
635-1/2	1/2"	Red	9.4" (239 mm)
635-9/16	9/16"	Orange	
Sets			
635-4	4-Piece set includes 1/4", 5/16", 3/8" & 7/16" hex		
635-6	6-Piece set includes 1/4", 5/16", 3/8", 7/16", 1/2" & 9/16" hex		



Multiple sizes in one convenient tool

- Interchangeable hex sizes are available in two models
- Heavy duty handles and shafts exceed the torque performance of regular nut drivers
- Wrench assist feature for additional torque

Cat. No.	Hex Sizes	Overall Length
32800	3/16", 1/4", 5/16", 3/8", 7/16" & 9/16"	9.5" (241 mm)
32801	3/16", 1/4", 5/16", 3/8" & 9/16"	9.1" (231 mm)

**MULTI-NUT
DRIVERS**



Ratcheting mechanism allows user to work faster and with more efficiency

- Includes four different screwdriver bits and 1/4" and 5/16" nut drivers

Cat. No.	Tips	Hex Sizes	Overall Length
32593	#1 & #2 Phillips and 1/4" & 3/16" Slotted	1/4"	3.5"
32594	#1 & #2 Square, #2 Phillips & 3/16" Slotted	& 5/16"	(63.5 mm)

Fixed shaft and internal storage compartment for the bits so they stay with the driver

- These drivers include 14 different screwdriver tips plus a 1/4" nut driver

Cat. No.	Description	Tips	Overall Length
32290	15-in-1 Classic	#0, #1, #2, #3 Phillips; #1 and #2 Square; #1 and #2 Combo; #10, #15, #20, #25 Torx; 4 and 6 MM Slotted; 1/4" Hex	
32291	15-in-1 Tamperproof	#10, #15, #20, #25, #27, #30 Torx-Pins; 1/8", 9/64", 5/32", 3/16" Hex-Pins; #6, #8, #10, #12 Spanners; 1/4" Hex	9" (229 mm)
32292	15-in-1 HVAC	#0, #1, #2 and #3 Phillips; #1 and #2 Square; Schrader Valve Insertion and Core Removal Bits; #10, #15, #20 and #25 Torx; 4 and 6 MM Slotted; 1/4" Hex	

Adjust to the length you need on the fly

Carry fewer tools with a more versatile screwdriver. The shafts adjust anywhere from 4" to 8" (10 – 20 cm) for numerous length choices.

- Removable and reversible shafts with a different tip on each end
- Proprietary system securely holds the blade in place – as durable as a traditional Klein fixed blade screwdriver
- Use on internet boxes, telecomm boxes, generators and more

Cat. No.	Description	Tips
32708	Adjustable Length Screwdriver	#1 & #2 Square
32751	Adjustable Length Screwdriver	#2 Phillips & 1/4" Slotted
Sets Replacement Blades		
32618	Replacement Blades	#2 Phillips and 1/4" Slotted
32709	Replacement Blades	#1 & #2 Square
32713	Replacement Blades	#1 Phillips & 3/16" Slotted
32715	Replacement Blades (3-Pack)	#2 Phillips & 1/4" Slotted #1 Phillips & 3/16" Slotted #1 & #2 Square
32619	Handle only	N/A

6-IN-1 RATCHETING STUBBY SCREWDRIVERS



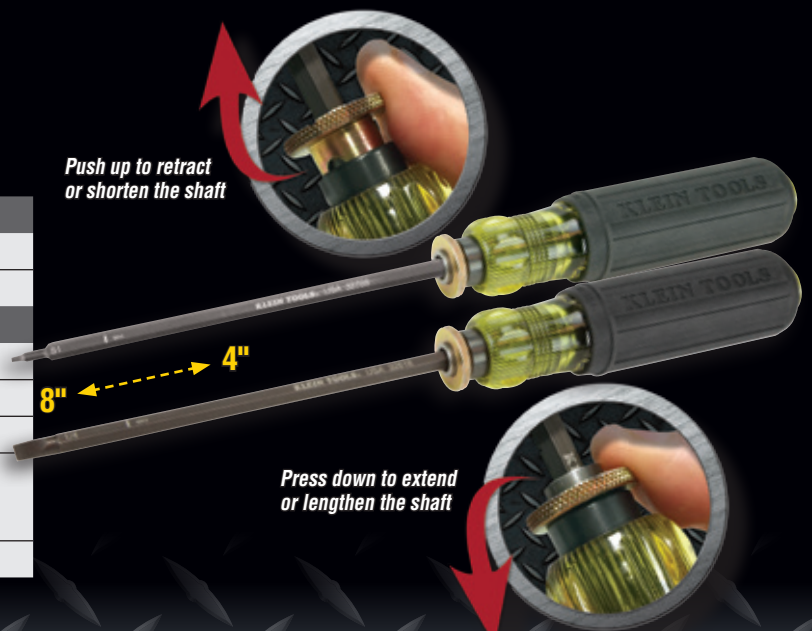
15-IN-1 SCREWDRIVERS

Internal storage for screwdriver bits



ADJUSTABLE LENGTH SCREWDRIVERS

Push up to retract or shorten the shaft



Press down to extend or lengthen the shaft

KLEIN TOOLS
EST. 1857
For Professionals... Since 1857™

See our complete line of Drivers

www.kleintools.com/catalog/drivers



© 2016 Klein Tools, Inc.
Lincolnshire, IL 60069-1418
Rev. 10/17 96454

Mouser Electronics

Authorized Distributor

Click to View Pricing, Inventory, Delivery & Lifecycle Information:

Klein Tools:

[32291](#) [13104](#) [13392](#) [32581](#) [32292](#) [32290](#) [32585](#) [13391](#) [13105](#) [32594](#) [32800](#) [32593](#) [32801](#) [85514](#)