

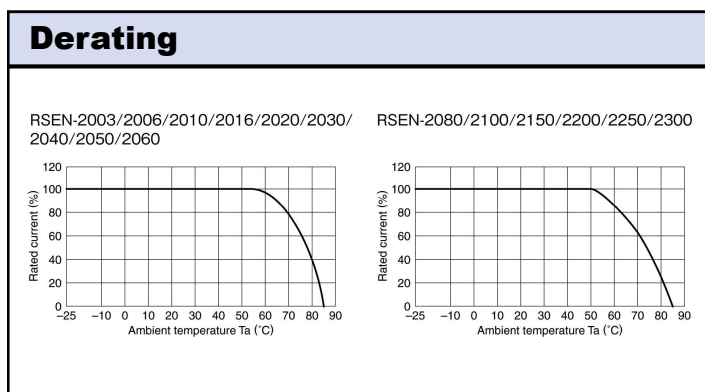
3A to 300A, 250VAC EMI Filters

Features

- ◆ Lower Cost (Than RSHN Series)
- ◆ DIN Rail Mount Option (Up 30A)
- ◆ Low Earth Leakage Current Option (Up to 30A)
- ◆ Conforms to UL, CSA and EN Safety Agency Certifications



Specifications						
Model		RSEN-2003 RSEN-2003D RSEN-2003L	RSEN-2006 RSEN-2006D RSEN-2006L	RSEN-2010 RSEN-2010D RSEN-2010L	RSEN-2016 RSEN-2016D RSEN-2016L	RSEN-2020 RSEN-2020D RSEN-2020L
Rated Voltage (AC, DC)	V	250V				
Rated Current	A	3A	6A	10A	16A	20A
DC Resistance (total)	mΩ	250	110	40	20	10
Model		RSEN-2030 RSEN-2030D RSEN-2030L	RSEN-2040	RSEN-2050	RSEN-2060	RSEN-2080
Rated Voltage (AC, DC)	V	250V				
Rated Current	A	30A	40A	50A	60A	80A
DC Resistance (total)	mΩ	6	6	4	3	3.4
Model		RSEN-2100	RSEN-2150	RSEN-2200	RSEN-2250	RSEN-2300
Rated Voltage (AC, DC)	V	250V				
Rated Current	A	100A	150A	200A	250A	300A
DC Resistance (total)	mΩ	2.7	2	1.4	1	0.7
Withstand Voltage	V	Terminals to Case: 2500VAC (1 Minute)				
Isolation Resistance	MΩ	100MΩ minimum (500VDC, 1 Minute)				
Leakage Current (max)	A	RSEN-20xx 1mA; RSEN20xxL 10uA (250VAC, 60Hz)				
Operating Temperature	°C	-25 to +85°C (Derate above 50 / 55°C, see derating curve)				
Storage Temperature	°C	-25 to +85°C				
Safety Agency Certifications	-	UL1283, CSA C22.2 No.8, EN60939				
Weight	g	170g to 8400g model dependant (See weights chart on website)				
Warranty	yr	5 Year				

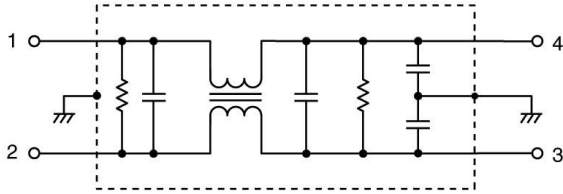


Options

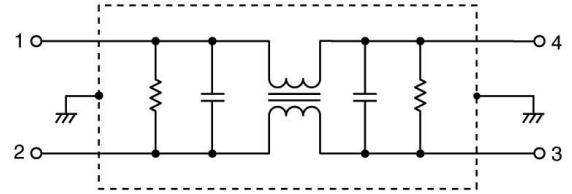
Chassis Mount & Standard Leakage Current	RSEN-20xx
DIN Rail Mount & Standard Leakage Current	RSEN-20xxD
Chassis Mount & Low Leakage Current	RSEN-20xxL

Circuit

RSEN-2 ***
RSEN-2 *** D

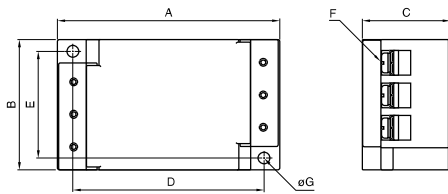


RSEN-2 *** L

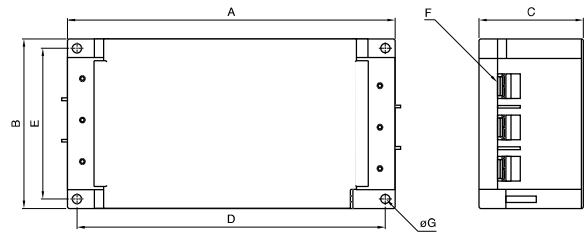


Outline Drawing

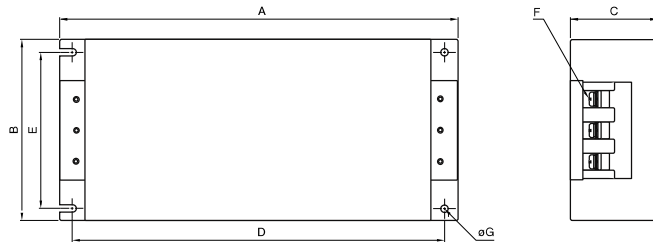
RSEN-2003/2006/2010/2016/2020/2030



RSEN-2040/2050/2060



RSEN-2080/2100/2150/2200/2250/2300



Dimensions in mm

Part No.	A	B	C	D	E	F	G	Recommended clamping torque
RSEN-2003	87	52	35	75	43	M4	4.5	1.27N m
RSEN-2006								
RSEN-2010								
RSEN-2016								
RSEN-2020								
RSEN-2030	170	90	54	160	80	M5	4.5	2.5N m
RSEN-2040								
RSEN-2050								
RSEN-2060	267	161	85	247	135	M8	6.5	7.64N m
RSEN-2080								
RSEN-2100								
RSEN-2150								
RSEN-2200								
RSEN-2250	395	195	100	375	169	M10	6.5	11.8N m
RSEN-2300								

For Additional Information, please visit
us.tdk-lambda.com/lp/products/r-series.htm

