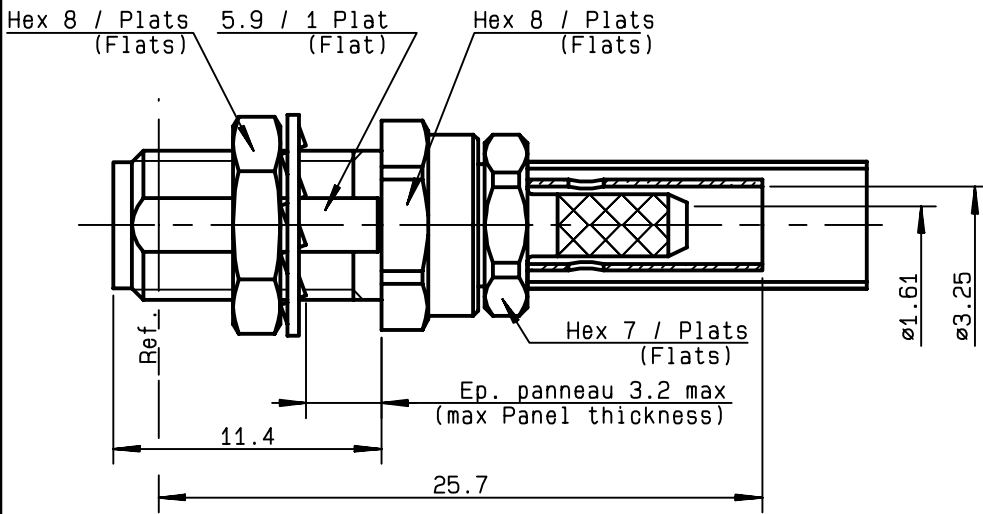
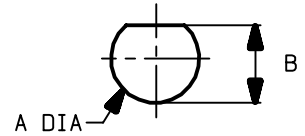


**STRAIGHT BULKHEAD JACK**  
**CRIMP OR SOLDER TYPE - CABLE 2.6/50 S**

**R125.303.001**  
**SERIES SMA**



PERCEGE PANNEAU  
 MOUNTING HOLE



	MM		INCH	
	maxi	mini	maxi	mini
A	6.45	6.4	0.254	0.252
B	6.05	6	0.238	0.236

NOMINAL IMPEDANCE	<b>50</b> Ω
FREQUENCY RANGE	<b>0-12.4</b> GHz
TEMPERATURE RATING	<b>-65/+165</b> °C
V.S.W.R	<b>1.15</b> + <b>.02</b> x F(GHz)Maxi
RF INSERTION LOSS	<b>0.06</b> √F(GHz) dB Maxi
VOLTAGE RATING	<b>250</b> Veff Maxi
DIELECTRIC WITHSTANDING VOLTAGE	<b>750</b> Veff Mini
INSULATION RESISTANCE	<b>5000</b> MΩMini
HERMETIC SEAL	<b>NA</b> Atm.cm <sup>3</sup> /s
LEAKAGE (pressurized only)	<b>NA</b>
MECHANICAL DURABILITY	<b>500</b> Cycles
WEIGHT	gr
SPECIFICATION	

CABLES : **KX 22A**  
**RG 188**  
**RG 316**

OTHERS CHARACTERISTICS

CABLE RETENTION	<b>90</b>	N Mini
CENTER CONTACT RETENTION		
Axial force - mating end	<b>27</b>	N Mini
Axial force - opposite end	<b>27</b>	N Mini
Torque	<b>NA</b>	cm.N Mini
RECOMMENDED TORQUES		
Mating	<b>NA</b>	cm.N
Panel nut	<b>80</b>	cm.N
Clamp nut	<b>100</b>	cm.N

CONNECTOR PARTS MATERIALS

BODY	STAINLESS STEEL
OUTER CONTACT	
CENTER CONTACT	BERYLLIUM COPPER
INSULATOR	PTFE
GASKET	
OTHERS PIECES	BRASS

FINISH

(all values are given in micrometers)

PASSIVATED	
GOLD 1.3 OVER NICKEL 2	
-	
-	
NICKEL 2	

BAFFERT

ISSUE	CREATION DATE	FILE PART-NUMBER
<b>9840D04</b>	<b>18/01/1991</b>	



**RADIALL**®

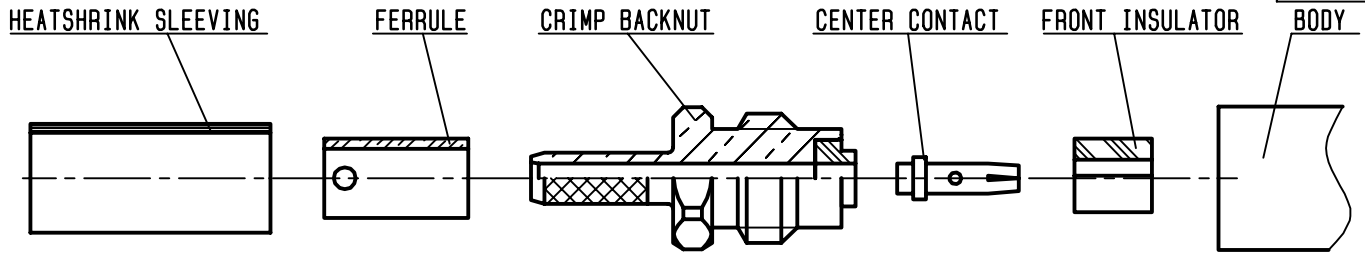
The information given here is subject to change without notice.  
 Design changes may be in order to improve the product .

Connect to the future



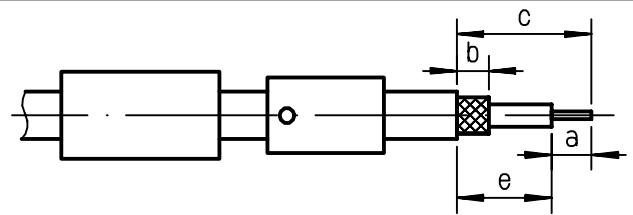
**R125.303.001**

ISSUE **9840D04** SERIES **SMA**



①

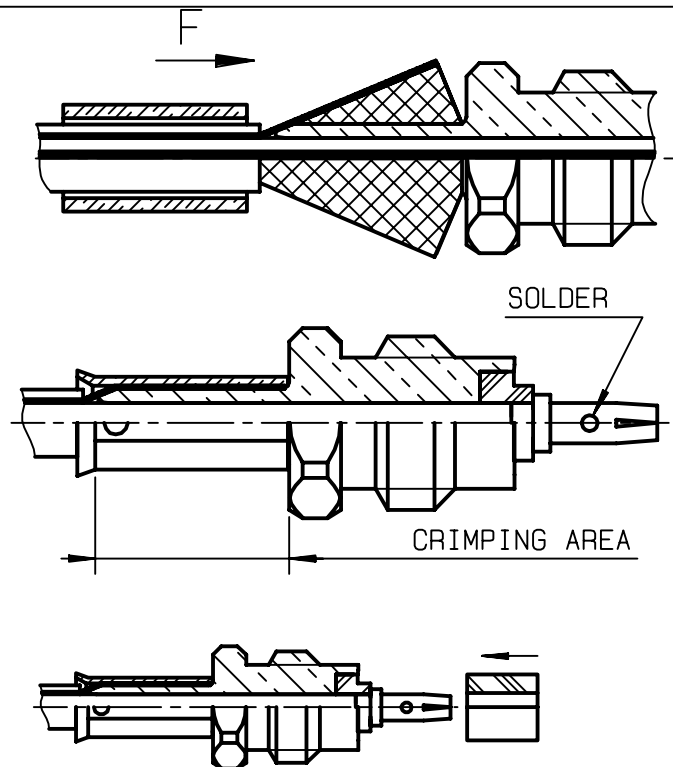
Slide the heatshrink sleeving and the ferrule onto the cable  
 Ferrule holes to the front if SOLDER.  
 Ferrule holes to the rear if CRIMP.  
 Strip the cable .



Stripping	a	b	c	d	e
inch	0.138	0.276	0.531	0	0
mm	3.5	7	13.5		

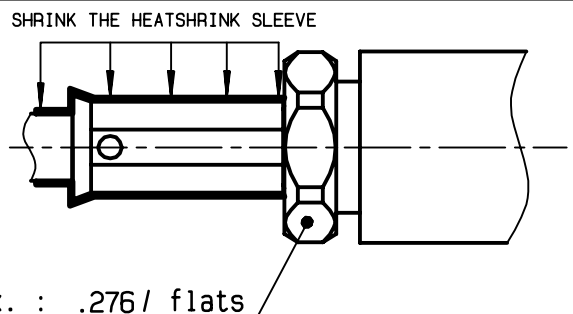
②

Fan the braid .  
 Slide the back body between dielectric and braid .  
 Put the cable against the insulator.  
 Slide ferrule over the braid (in direction F)  
 Crimp ferrule with RADIALL crimping tool R282 211 or crimping tool R282 293 000 ( M22520/5-01 ) + dies R282 235 003 ( M22520/5-03 ) Hex .128  
 Slide the center contact on the cable until it bottoms against insulator .  
 Solder the center contact.  
 Slide the front insulator on the center contact.



③

Screw the sub-assembly into the connector body (recommended coupling torque: 7.08 to 10.16 in.lb)  
 Cut the excess of braid.  
 Slide sleeve over ferrule and heatshrink in place.



# Mouser Electronics

Authorized Distributor

Click to View Pricing, Inventory, Delivery & Lifecycle Information:

Radial:

[R125303001](#) [R125303001W](#)