



# OXFORD ELECTRICAL PRODUCTS

low profile line isolation transformers

0800 316 6060

[get an online quote](#)

[get a catalogue delivered](#)

[download entire catalogue](#)

[can't find what you looking for ??..](#)

[back to catalogue index](#)

[home](#)

## Type OEP 1200 1:1 600 Ohm

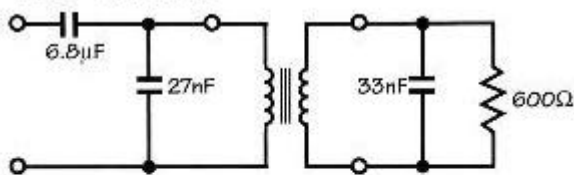


Provides isolation between modems or similar devices and telephone lines. This transformer is designed for use in voice or data transmission circuits where the line d.c. is diverted from the windings by a choke or solid state device. The use of this transformer should enable the equipment it is used with to comply with the relevant requirements of BS6305.

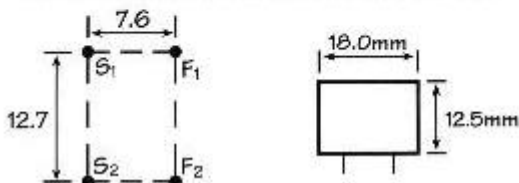
**Resin encapsulated in flame retardant cases. The unit is PCB Mounting**

<b>Insertion loss</b>	1.5dB max @ 2kHz.
<b>Return loss</b>	-20dB @ 200Hz-4kHz.
<b>Isolation longitudinal</b>	3.54kV RMS or 5kV dc.
<b>Saturation</b>	10V RMS 65V peak.
<b>Balance</b>	Better than 80dB 200Hz-4kHz.
<b>Signal/noise ratio</b>	> 33dB
<b>dc resistance</b>	68 $\Omega$ $\pm$ 10% (NB. not to be tested with a dc current)

### TEST CIRCUIT



**DIMENSIONS** H = 12.5 W = 18 D = 18



Approved to EN60950  
and EN41003  
BAPT Certificate of  
Recognition CR/0126



## Type Z1260 1:1 600 Ohm



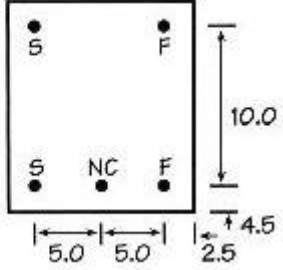
Provides isolation between modems or similar devices and telephone lines. This transformer is designed for use in voice or data transmission circuits where the line d.c. is diverted from the windings by a choke or solid state device. The use of this transformer should enable the equipment it is used with to comply with the relevant requirements of BS6305. This is a lower profile version of the OEP 1200 transformer.

**Resin encapsulated in flame retardant cases. The unit is PCB Mounting**

<b>Insertion loss</b>	1.5dB max @ 2kHz.
<b>Return loss</b>	-20dB @ 200Hz-4kHz.
<b>Isolation longitudinal</b>	3.5kV RMS or 5kV dc.
<b>Saturation</b>	< 10V RMS 65V peak.
<b>Balance</b>	Better than 80dB 200Hz-4kHz.
<b>Signal/noise ratio</b>	> 33dB
<b>dc resistance</b>	68Ω ±10% (NB. not to be tested with a dc current)

**DIMENSIONS**

- Height 11mm
- Width 15mm
- Length 19mm



**Approved to EN60950 and EN41003  
BABT Certificate of Recognition CR/0126**

