

CUSTOMER DRAWING

REVISONS		DATE	APPROVED
8	CD1477	Oct.30.2018	

DESCRIPTION
UPDATE DRAWING

PART NUMBER SYSTEM
CEXXXXXXXX011011X

SIGNAL SPEED/IMPEDANCE
1: BELOW 16Gbps
2: 16-32Gbps WITH 85 ohm

CARD THICKNESS
0: 1.60MM

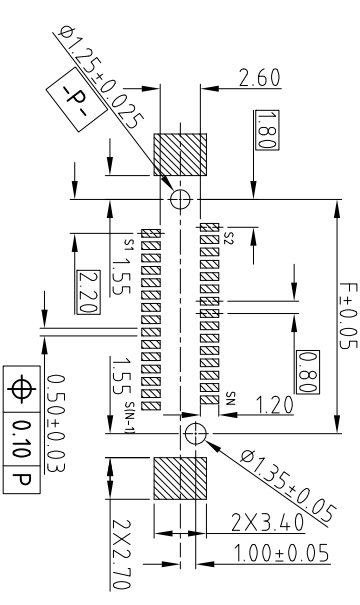
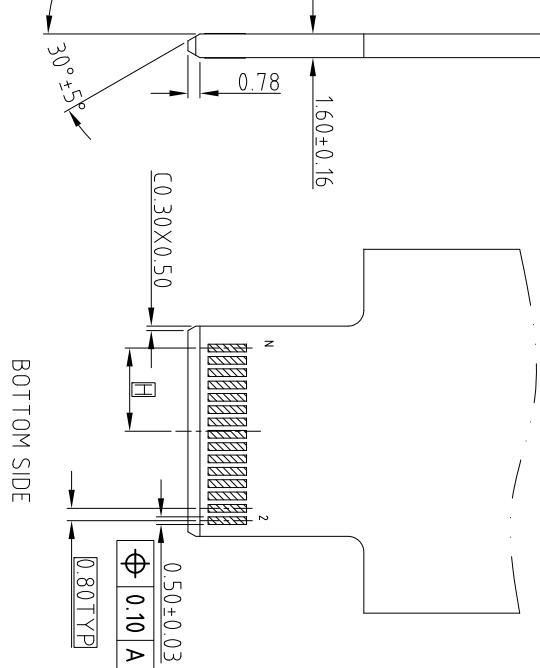
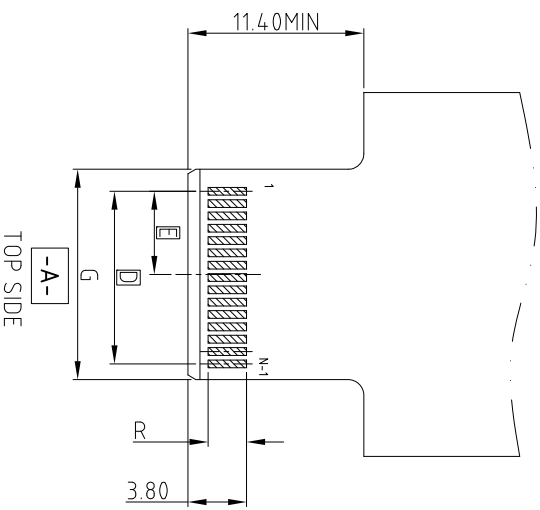
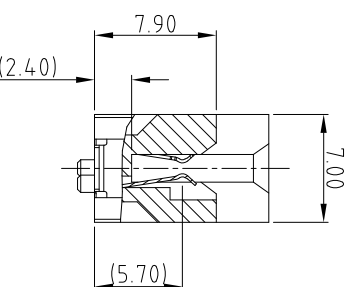
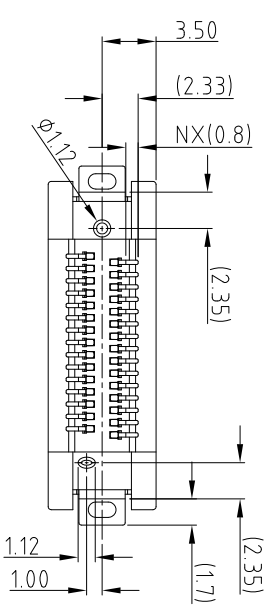
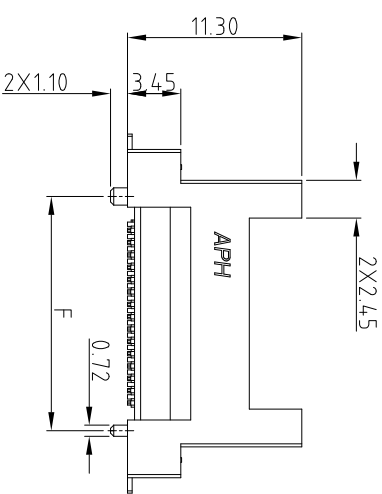
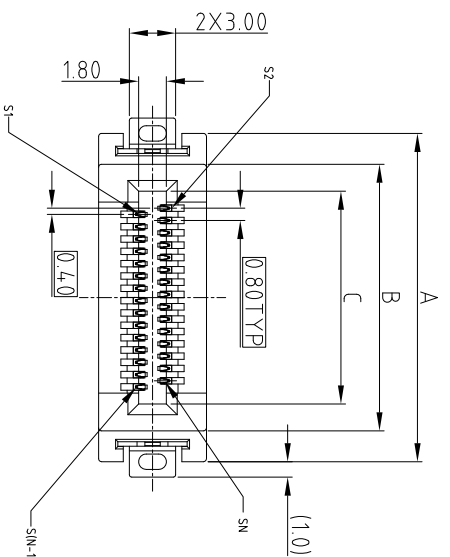
PLATING SPEC
1: 0.76um Au
2: 0.38um Au
3: GOLD FLASH
4: 0.76umPdNi +GF

GUIDE HOLE
0: WITHOUT GUIDE HOLE
G: WITH GUIDE HOLE

POWER PIN COUNT
0: WITHOUT POWER PIN
2: 2PIN
4: 4PIN
6: 6PIN

SIGNAL PIN COUNT

000: 0 PIN ; 080: 80PIN
020: 20PIN ; 100: 100PIN
026: 26PIN ; 120: 120PIN
040: 40PIN ; 140: 140PIN
050: 50PIN ; 160: 160PIN
060: 60PIN ; 180: 180PIN
200: 200PIN



RECOMMEND SOLDER PCB LAYOUT
GENERAL TOLERANCE ±0.05MM

RECOMMEND MATING CARD, THICKNESS=1.60±0.16MM
GENERAL TOLERANCE ±0.05MM

PIN COUNT	DIMENSION							
	A	B	C	D	E	F	G	H
N (SIGNAL)	17.30	13.30	9.80	7.20	3.40	11.20	9.65	3.40
20	19.70	15.70	12.20	9.60	4.60	13.60	12.05	4.60
26	25.30	21.30	17.80	15.20	7.40	19.20	17.65	7.40
40	29.30	25.30	21.80	19.20	9.40	23.20	21.65	9.40



SYSTEM	DIM R
IMPEDANCE (GOLD FINGER LENGTH)	2.50
85 ohm	

- NOTE:
- MATERIAL: HOUSING: HIGH TEMPERATURE THERMOPLASTIC BLACK UL94-V0
CONTACT: COPPER ALLOY
BOARDLOCK: SPCC
 - PLATING: CONTACT: MATING AREA: SEE PLATING SEPC OVER 127-2.54 UM NICKEL UNDERPLATED
SOLDER AREA: 127 MIN TIN OVER 127-2.54 UM NICKEL UNDERPLATED
BOARDLOCK: 127 MIN TIN OVER 127-2.54UM NICKEL UNDERPLATED
 - ELECTRICAL PERFORMANCE: RATED CURRENT FOR POWER PIN: REFER PRODUCT APPLICATION SPEC
RATED CURRENT FOR SIGNAL PIN: REFER PRODUCT APPLICATION SPEC
 - MATERIAL SHOULD BE FILLED AMPHENOL SPEC # SSN002
 - ORDERING PN: REFER TO THE PN SYSTEM

Amphenol

COOL EDGE CONNECTOR
0.80MM PITCH

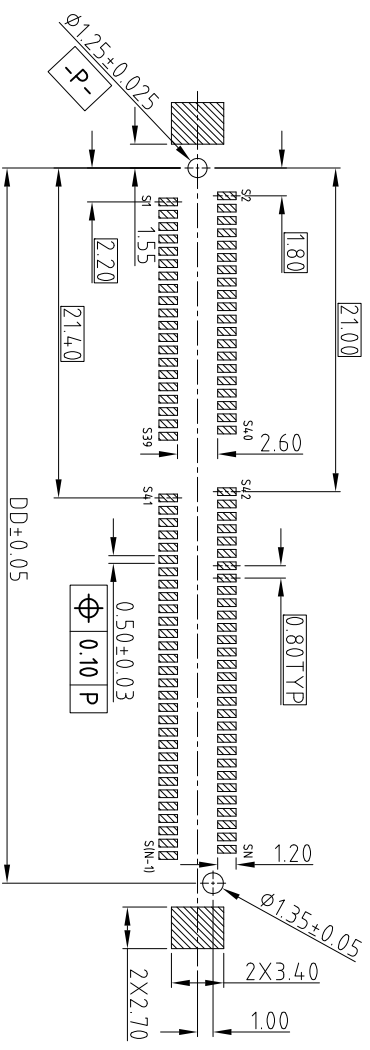
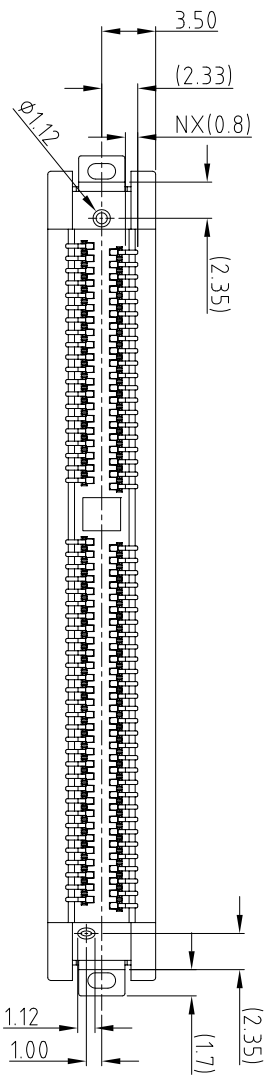
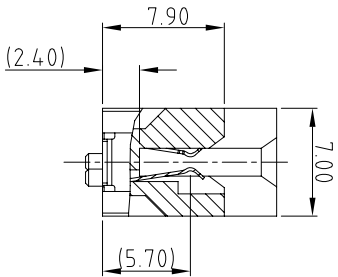
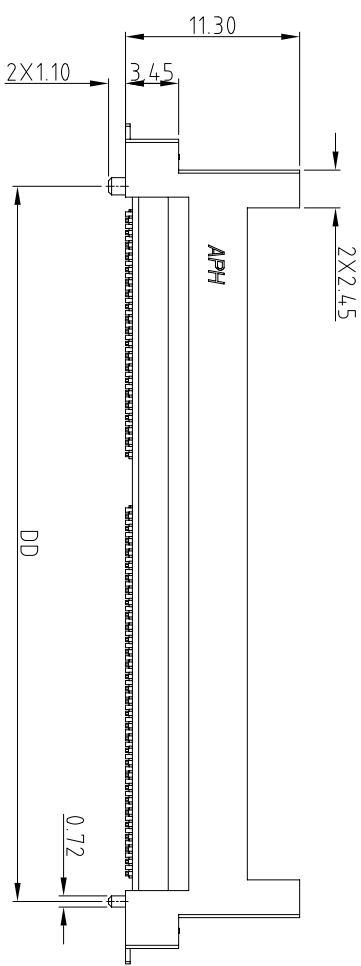
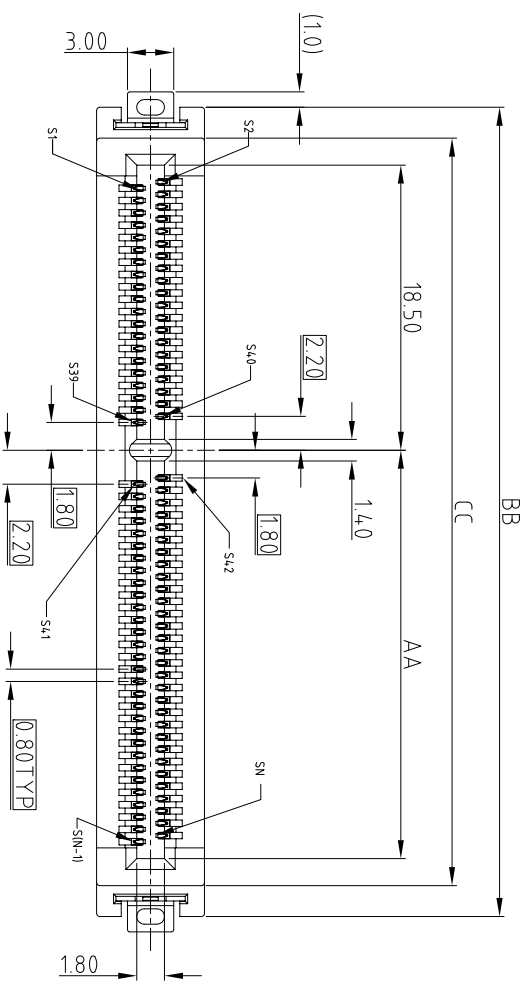
UNLESS OTHERWISE SPECIFIED TOLERANCES		APPROVAL		DATE	
U.S.	METRIC	DRAWN	CHECKED	Oct.30.2018	
X +/-	0.25				
XX +/-	0.20				
XXX +/-	0.15				
ANGLES +/-	5°				

FOR MATERIALS AND FINISHES SEE NOTES		DRAWING FILE :	
REMOVE SHARP EDGES	ANGLE OF PROJECTION	INTERNAL DRAWING: VEC	CEXXXXXXXX011011X
U.S. INCHES			
(METRIC)			

TITLE		SCALE		SHEET	
SIZE	DRAWING NO.	NONE	1	OF	8
A3	C CEXXXXXXXX011011X				
REV.	8				

CUSTOMER DRAWING

REVISIONS		DATE	APPROVED
SYM	ECN	DESCRIPTION	
		SEE SHEET 1	



RECOMMENDED SOLDER PCB LAYOUT
GENERAL TOLERANCE ±0.05



UNLESS OTHERWISE SPECIFIED
TOLERANCES
U.S. METRIC

X	+/-	0.25
XX	+/-	0.20
XXX	+/-	0.15
FRACTIONS	+/-	
ANGLES	+/-	5°

FOR MATERIALS AND FINISHES
SEE NOTES

REMOVE SHARP EDGES

DIMENSIONS
U.S. INCHES
(METRIC) (mm)

APPROVAL DATE

DRAWN Oct.30.2018

CHECKED

APPROVED

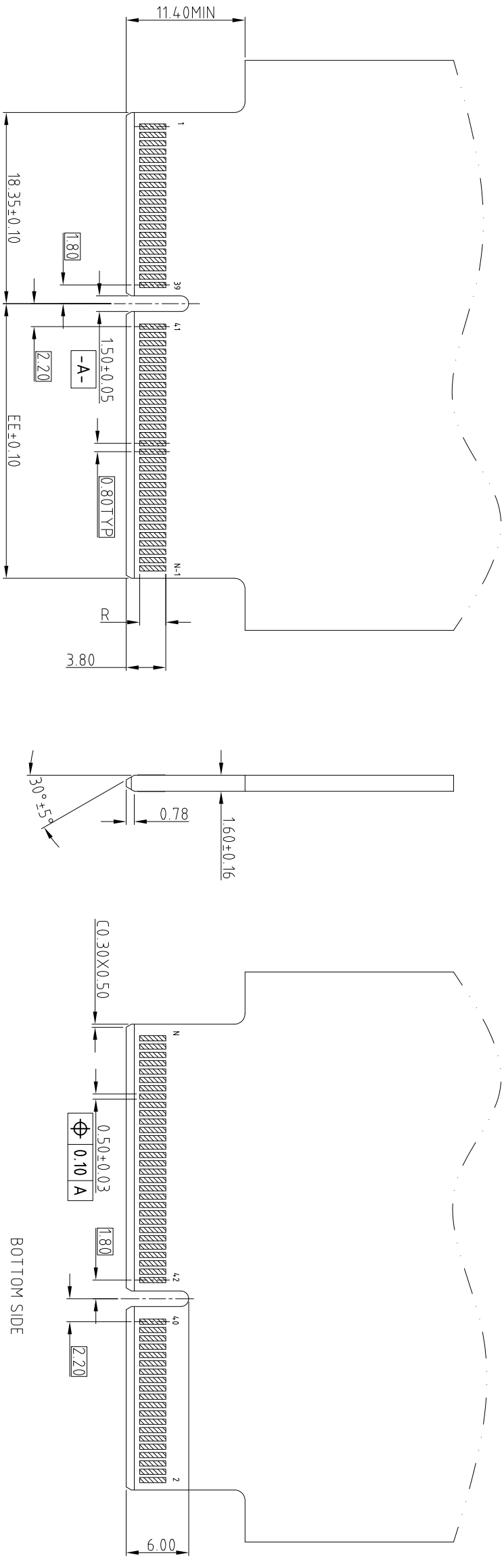
TITLE
Amphenol
COOL EDGE CONNECTOR
0.80MM PITCH

SIZE DRAWING NO.
A3 C CEXXXXXX011011X

SCALE NONE SHEET 2 OF 8

CUSTOMER DRAWING

REVISIONS				
SYM	ECN	DESCRIPTION	DATE	APPROVED
		SEE SHEET 1		



RECOMMENDED LAY OUT FOR MATING CARD THICKNESS=1.60±0.16
GENERAL TOLERANCE ±0.05

PIN COUNT	DIMENSION				
	AA	BB	CC	DD	EE
N (SIGNAL)					
60	10.50	36.50	32.50	30.40	10.35
80	18.50	44.50	40.50	38.40	18.35
100	26.50	52.50	48.50	46.40	26.35
120	34.50	60.50	56.50	54.40	34.35
140	42.50	68.50	64.50	62.40	42.35
160	50.50	76.50	72.50	70.40	50.35
180	58.50	84.50	80.50	78.40	58.35
200	66.50	92.50	88.50	86.40	66.35



SYSTEM	DIM R
IMPEDANCE (GOLD FINGER LENGTH)	2.50
	85 ohm

UNLESS OTHERWISE SPECIFIED TOLERANCES	
U.S.	METRIC
X +/-	0.3
.XX +/-	0.20
.XXX +/-	0.15
FRACTIONS +/-	
ANGLES +/-	5°

APPROVAL		DATE
DRAWN		Oct.30.2018
CHECKED		
APPROVED		

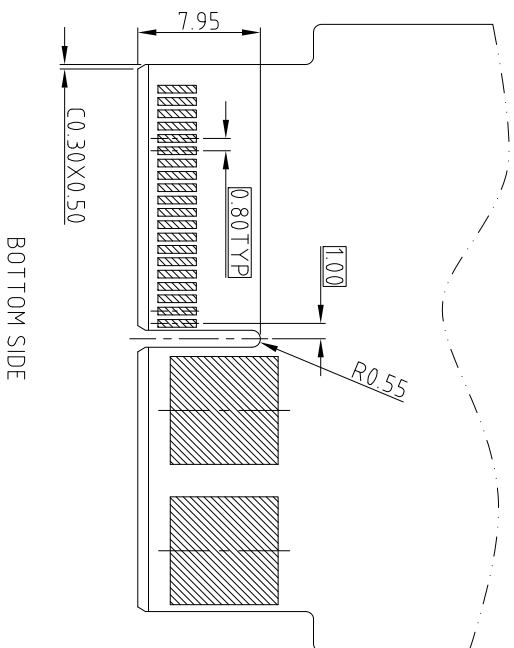
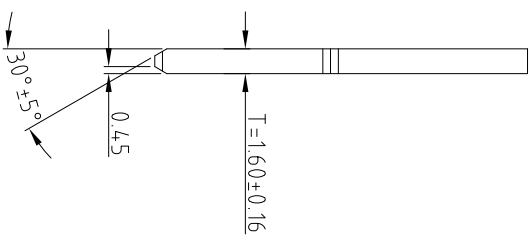
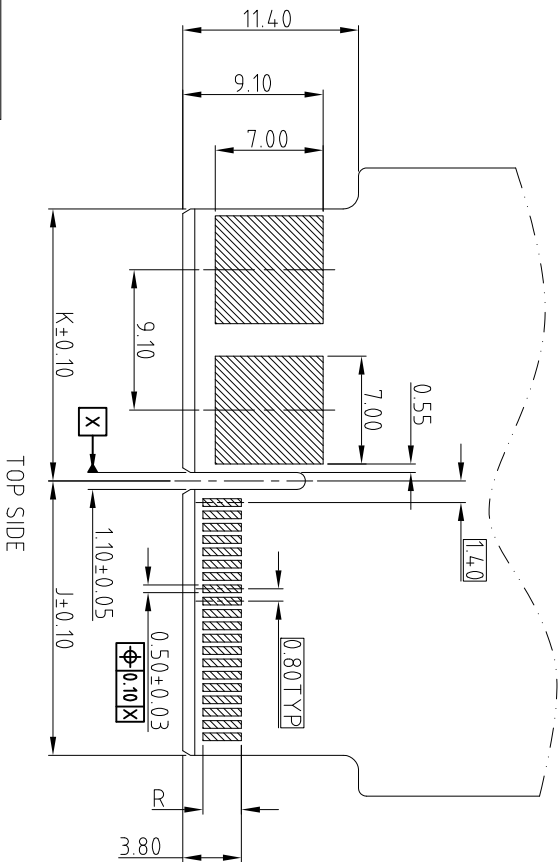
DRAWING FILE :		INTERNAL DRAWING/CE/C CEXXXXXX011011X	
TITLE			
Amphenol			
COOL EDGE CONNECTOR			
0.80MM PITCH			

FOR MATERIALS AND FINISHES SEE NOTES	REMOVE SHARP EDGES	ANGLE OF PROJECTION	SIZE	DRAWING NO.	REV.
			A3	C CEXXXXXX011011X	8
			SCALE	NONE	SHEET 3 OF 8

This document is the property of Amphenol Corporation and is delivered on the express condition that it is not to be disclosed, reproduced or used, in whole or in part, without the prior written consent of Amphenol Corporation. Amphenol Corporation and its subsidiaries and affiliates shall not be held liable for any damage or loss of information or to use any information in this document.

CUSTOMER DRAWING

REVISIONS		DATE	APPROVED
SYM	ECN	DESCRIPTION	
		SEE SHEET 1	



SYSTEM	DIM R
IMPEDANCE (GOLD FINGER LENGTH)	2.50

RECOMMEND MATING CARD, THICKNESS=1.60±0.16MM
GENERAL TOLERANCE ±0.05MM

PIN COUNT	N (POWER)	M (SIGNAL)	DIMENSION										
			A	B	C	D	E	F	G	H	J	K	
2	18	9.15	8.70	26.85	22.85	11.70	20.25	11.30	10.90	9.00	8.55		
	20	9.95	8.70	27.65	23.65	11.70	21.05	11.30	10.90	9.80	8.55		
	4.0	17.95	8.70	35.65	31.65	11.70	29.05	11.30	10.90	17.80	8.55		
	6.0	25.95	8.70	43.65	39.65	11.70	37.05	11.30	10.90	25.80	8.55		
2	8.0	33.95	8.70	51.65	47.65	11.70	45.05	11.30	10.90	33.80	8.55		
	10.0	41.95	8.70	59.65	55.65	11.70	53.05	11.30	10.90	41.80	8.55		
	12.0	49.95	8.70	67.65	63.65	11.70	61.05	11.30	10.90	49.80	8.55		
	14.0	57.95	8.70	75.65	71.65	11.70	69.05	11.30	10.90	57.80	8.55		
	16.0	65.95	8.70	83.65	79.65	11.70	77.05	11.30	10.90	65.80	8.55		
	18.0	73.95	8.70	91.65	87.65	11.70	85.05	11.30	10.90	73.80	8.55		
20.0	81.95	8.70	99.65	95.65	11.70	93.05	11.30	10.90	81.80	8.55			

PIN COUNT	N (POWER)	M (SIGNAL)	DIMENSION										
			A	B	C	D	E	F	G	H	J	K	
4	2.0	9.95	17.80	36.75	32.75	20.80	30.15	20.40	20.00	9.80	17.65		
	4.0	17.95	17.80	44.75	40.75	20.80	38.15	20.40	20.00	17.80	17.65		
	6.0	25.95	17.80	52.75	48.75	20.80	46.15	20.40	20.00	25.80	17.65		
	8.0	33.95	17.80	60.75	56.75	20.80	54.15	20.40	20.00	33.80	17.65		
4	10.0	41.95	17.80	68.75	64.75	20.80	62.15	20.40	20.00	41.80	17.65		
	12.0	49.95	17.80	76.75	72.75	20.80	70.15	20.40	20.00	49.80	17.65		
	14.0	57.95	17.80	84.75	80.75	20.80	78.15	20.40	20.00	57.80	17.65		
	16.0	65.95	17.80	92.75	88.75	20.80	86.15	20.40	20.00	65.80	17.65		
	18.0	73.95	17.80	100.75	96.75	20.80	94.15	20.40	20.00	73.80	17.65		
	20.0	81.95	17.80	108.75	104.75	20.80	102.15	20.40	20.00	81.80	17.65		

PIN COUNT	N (POWER)	M (SIGNAL)	DIMENSION										
			A	B	C	D	E	F	G	H	J	K	
6	2.0	9.95	26.90	45.85	41.85	29.90	39.25	29.50	29.10	9.80	26.75		
	4.0	17.95	26.90	53.85	49.85	29.90	47.25	29.50	29.10	17.80	26.75		
	6.0	25.95	26.90	61.85	57.85	29.90	55.25	29.50	29.10	25.80	26.75		
	8.0	33.95	26.90	69.85	65.85	29.90	63.25	29.50	29.10	33.80	26.75		
6	10.0	41.95	26.90	77.85	73.85	29.90	71.25	29.50	29.10	41.80	26.75		
	12.0	49.95	26.90	85.85	81.85	29.90	79.25	29.50	29.10	49.80	26.75		
	14.0	57.95	26.90	93.85	89.85	29.90	87.25	29.50	29.10	57.80	26.75		
	16.0	65.95	26.90	101.85	97.85	29.90	95.25	29.50	29.10	65.80	26.75		
	18.0	73.95	26.90	109.85	105.85	29.90	103.25	29.50	29.10	73.80	26.75		
	20.0	81.95	26.90	117.85	113.85	29.90	111.25	29.50	29.10	81.80	26.75		



Amphenol

TITLE
HYBRID COOL EDGE
CONNECTOR 0.80MM PITCH

UNLESS OTHERWISE SPECIFIED	APPROVAL	DATE
TOLERANCES	DRAWN	Oct.30.2018
U.S.	CHECKED	
METRIC	APPROVED	
X +/-		
XX +/-		
XXX +/-		
FRACTIONS +/-		
ANGLES +/-		
5°		

FOR MATERIALS AND FINISHES	INTERNAL DRAWING ONLY
SEE NOTES	CEXXXXXXXXX011011X
REMOVE SHARP EDGES	
DIMENSIONS	
U.S. INCHES	
(METRIC) (mm)	

SCALE	NONE	SHEET 5 OF 8
SIZE	A3	REV. 8
DRAWING NO.	C CEXXXXXXXXXX011011X	



This document is the property of Amphenol Corporation and is delivered on the express condition that it is not to be disclosed, reproduced or used, in whole or in part, for any purpose other than that intended by Amphenol Corporation without its prior consent. No right is granted to disclose or to use any information in this document.

CUSTOMER DRAWING

REVISIONS			DATE	APPROVED
SYM	ECON	DESCRIPTION		
		SEE SHEET 1		

PIN COUNT	DIMENSION															
	N (POWER)	M (SIGNAL)	A	B	C	D	E	F	G	H	J	K	L	Q		
2	18		9.15	8.70	13.20	13.65	37.85	33.85	17.20	20.25	11.30	10.90	9.00	8.55		
	20		9.95	8.70	13.20	14.45	38.65	34.65	17.20	21.05	11.30	10.90	9.80	8.55		
	4.0		17.95	8.70	13.20	22.45	46.65	42.65	17.20	29.05	11.30	10.90	17.80	8.55		
	6.0		25.95	8.70	13.20	30.45	54.65	50.65	17.20	37.05	11.30	10.90	25.80	8.55		
2	8.0		33.95	8.70	13.20	38.45	62.65	58.65	17.20	45.05	11.30	10.90	33.80	8.55		
	10.0		41.95	8.70	13.20	46.45	70.65	66.65	17.20	53.05	11.30	10.90	41.80	8.55		
	12.0		49.95	8.70	13.20	54.45	78.65	74.65	17.20	61.05	11.30	10.90	49.80	8.55		
	14.0		57.95	8.70	13.20	62.45	86.65	82.65	17.20	69.05	11.30	10.90	57.80	8.55		
2	16.0		65.95	8.70	13.20	70.45	94.65	90.65	17.20	77.05	11.30	10.90	65.80	8.55		
	18.0		73.95	8.70	13.20	78.45	102.65	98.65	17.20	85.05	11.30	10.90	73.80	8.55		
	20.0		81.95	8.70	13.20	86.45	110.65	106.65	17.20	93.05	11.30	10.90	81.80	8.55		

PIN COUNT	DIMENSION															
	N (POWER)	M (SIGNAL)	A	B	C	D	E	F	G	H	J	K	L	Q		
4	20		9.95	17.80	22.30	14.45	47.75	43.75	26.30	30.15	20.40	20.00	9.80	17.65		
	4.0		17.95	17.80	22.30	22.45	55.75	51.75	26.30	38.15	20.40	20.00	17.80	17.65		
	6.0		25.95	17.80	22.30	30.45	63.75	59.75	26.30	46.15	20.40	20.00	25.80	17.65		
	8.0		33.95	17.80	22.30	38.45	71.75	67.75	26.30	54.15	20.40	20.00	33.80	17.65		
4	10.0		41.95	17.80	22.30	46.45	79.75	75.75	26.30	62.15	20.40	20.00	41.80	17.65		
	12.0		49.95	17.80	22.30	54.45	87.75	83.75	26.30	70.15	20.40	20.00	49.80	17.65		
	14.0		57.95	17.80	22.30	62.45	95.75	91.75	26.30	78.15	20.40	20.00	57.80	17.65		
	16.0		65.95	17.80	22.30	70.45	103.75	99.75	26.30	86.15	20.40	20.00	65.80	17.65		
4	18.0		73.95	17.80	22.30	78.45	111.75	107.75	26.30	94.15	20.40	20.00	73.80	17.65		
	20.0		81.95	17.80	22.30	86.45	119.75	115.75	26.30	102.15	20.40	20.00	81.80	17.65		

PIN COUNT	DIMENSION															
	N (POWER)	M (SIGNAL)	A	B	C	D	E	F	G	H	J	K	L	Q		
6	20		9.95	26.90	31.40	14.45	56.85	52.85	35.40	39.25	29.50	29.10	9.80	26.75		
	4.0		17.95	26.90	31.40	22.45	64.85	60.85	35.40	47.25	29.50	29.10	17.80	26.75		
	6.0		25.95	26.90	31.40	30.45	72.85	68.85	35.40	55.25	29.50	29.10	25.80	26.75		
	8.0		33.95	26.90	31.40	38.45	80.85	76.85	35.40	63.25	29.50	29.10	33.80	26.75		
6	10.0		41.95	26.90	31.40	46.45	88.85	84.85	35.40	71.25	29.50	29.10	41.80	26.75		
	12.0		49.95	26.90	31.40	54.45	96.85	92.85	35.40	79.25	29.50	29.10	49.80	26.75		
	14.0		57.95	26.90	31.40	62.45	104.85	100.85	35.40	87.25	29.50	29.10	57.80	26.75		
	16.0		65.95	26.90	31.40	70.45	112.85	108.85	35.40	95.25	29.50	29.10	65.80	26.75		
6	17.0		69.95	26.90	31.40	74.45	120.85	112.85	35.40	99.25	29.50	29.10	69.80	26.75		



UNLESS OTHERWISE SPECIFIED		APPROVAL		DATE	
TOLERANCES		DRAWN	CHECKED	Oct.30.2018	
U.S.		APPROVED			
METRIC					
X	+/-				
.XX	+/-				
.XXX	+/-				
FRACTIONS	+/-				
ANGLES	+/-	5°			
FOR MATERIALS AND FINISHES SEE NOTES					
REMOVE SHARP EDGES					
DIMENSIONS					
—U.S.—		INCHES			
(METRIC)		(mm)			
DRAWING FILE : INTERNAL DRAWING/CE/C CEXXXXXX011011X					
ANGLE OF PROJECTION					
TITLE					
HYBRID COOL EDGE CONNECTOR 0.80MM PITCH					
SIZE	DRAWING NO.	REV.			
A3	C CEXXXXXX011011X	8			
SCALE	NONE	SHEET	8	OF	8

4 3 2 1