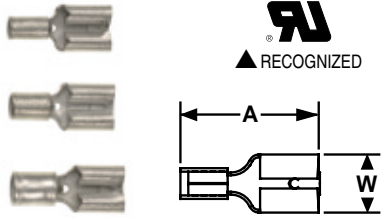


## FEMALE DISCONNECTS

### Non-Insulated

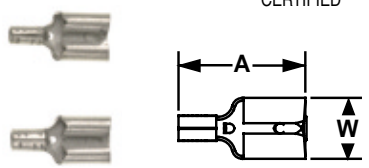
- Sleeved Barrel



LISTED  
 CERTIFIED  
 RECOGNIZED

### Non-Insulated

- Butted Seam



CERTIFIED

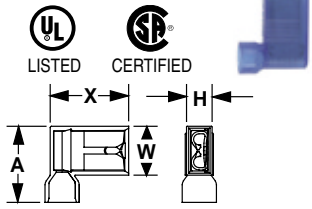
PANDUIT® Part Number	Wire Range	Color Code	Max. Ins.	Dim. (In.)				Tab Size	Std. Pkg. Qty.	Std. Ctn. Qty.	Bulk Pkg. Qty.	Bulk Ctn. Qty.	Crimp Tools
				A	W								
<b>D18-187-C</b>	22-18	—	—	.58	.23	.187 x .032	100	500	1000	10,000	CT-100‡ CT-200‡ CT-1570‡		
<b>D18-188-C</b>		—	—	.58	.23	.187 x .020	100	500	1000	10,000			
<b>D18-250-C</b>		—	—	—	.66	.30	.250 x .032	100	500	1000		10,000	
<b>D14-187-C</b>	16-14	—	—	.58	.23	.187 x .032	100	500	1000	10,000	CT-100 CT-200 CT-600 CT-1570		
<b>D14-188-C</b>		—	—	.58	.23	.187x .020	100	500	1000	10,000			
<b>D14-250-C</b>		—	—	—	.66	.30	.250 x .032	100	500	1000		10,000	
<b>D10-250-L</b>	12-10	—	—	.72	.30	.250 x .032	50	500	500	5000	CT-600‡ CT-1570‡		
<b>D18-188B-C</b>	22-18	—	—	.56	.23	.187 x .020	100	500	1000	10,000	CT-100		
<b>D18-250B-C</b>		—	—	.63	.30	.250 x .032	100	500	1000	10,000			
<b>D14-188B-C</b>	16-14	—	—	.56	.23	.187 x .020	100	500	1000	10,000			
<b>D14-250B-C</b>		—	—	—	.63	.30	.250 x .032	100	500	1000	10,000		

Order the number of pieces required in multiples of standard package quantities. L=50 pcs., C=100 pcs., D=500 pcs. and M=1000 pcs.  
 ‡ UL and CSA approved tooling/product combinations.  
 Prime items appear in **BOLD**.

## RIGHT ANGLE FEMALE DISCONNECTS

### Nylon Fully Pre-Insulated Funnel Entry

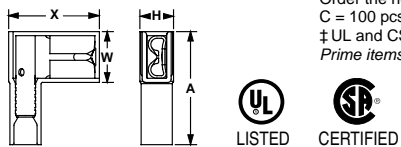
- Insulation Support
- Used in Limited Space Applications



LISTED  
 CERTIFIED

PANDUIT Part Number	Wire Range	Color Code	Max. Ins.	Dim. (In.)				Tab Size	Std. Pkg. Qty.	Std. Ctn. Qty.	Bulk Pkg. Qty.	Bulk Ctn. Qty.	Crimp Tools
				A	H	W	X						
<b>DNFR18-205FIB-C</b>	22-18	Red	.178	.58	.21	.37	.60	.205/.187 x .032	100	1000	1000	6000	CT-300-1
<b>DNFR18-206FIB-C</b>			.178	.58	.21	.37	.60	.205/.187 x .020	100	1000	1000	6000	
<b>DNFR18-250FIB-C</b>			.178	.58	.21	.37	.60	.250 x .032	100	1000	1000	6000	
<b>DNFR14-205FIB-C</b>	16-14	Blue	.178	.58	.21	.37	.60	.205/.187 x .032	100	1000	1000	6000	CT-300-1
<b>DNFR14-206FIB-C</b>			.178	.58	.21	.37	.60	.205/.187 x .020	100	1000	1000	6000	
<b>DNFR14-250FIB-C</b>			.178	.58	.21	.37	.60	.250 x .032	100	1000	1000	6000	
<b>DNFR18-205B-C</b>	22-18	Red	.125	.78	.36	.20	.62	.205/.187 x .032	100	1000	1000	6000	CT-1525‡
<b>DNFR18-206B-C</b>			.125	.78	.36	.20	.62	.205/.187 x .020	100	1000	1000	6000	
<b>DNFR18-250B-C</b>			.125	.78	.36	.20	.62	.250 x .032	100	1000	1000	6000	
<b>DNFR14-205B-C</b>	16-14	Blue	.155	.78	.36	.20	.63	.205/.187 x .032	100	1000	1000	6000	CT-1525‡
<b>DNFR14-206B-C</b>			.155	.78	.36	.20	.63	.205/.187 x .020	100	1000	1000	6000	
<b>DNFR14-250B-C</b>			.155	.78	.36	.20	.63	.250 x .032	100	1000	1000	6000	

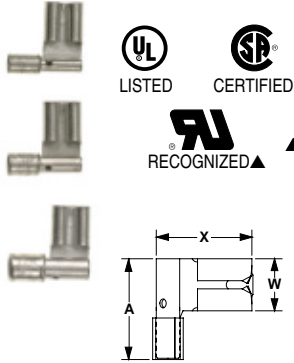
Order the number of pieces required in multiples of standard package quantities.  
 C = 100 pcs., D = 500 pcs. and M = 1000 pcs.  
 ‡ UL and CSA approved tooling/product combinations.  
 Prime items appear in **BOLD**.



## RIGHT ANGLE FEMALE DISCONNECTS

### Non-Insulated

- Sleeved Barrel

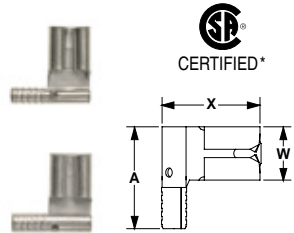


PANDUIT® Part Number	Wire Range	Color Code	Max. Ins.	Dim. (In.)				Tab Size	Std. Pkg. Qty.	Std. Ctn. Qty.	Bulk Pkg. Qty.	Bulk Ctn. Qty.	Crimp Tools
				A	F	W	X						
DR18-205-C	22-18	—	—	.53	—	.25	.54	.205/.187 x .032	100	1000	1000	10,000	CT-100‡ CT-200‡ CT-600‡ CT-1570‡
DR18-206-C		—	—	.53	—	.25	.54	.205/.187 x .020	100	1000	1000	10,000	
DR18-250-C		—	—	—	.57	—	.30	.54	.250 x .032	100	1000	1000	
DR14-205-C	16-14	—	—	.55	—	.25	.54	.205/.187 x .032	100	1000	1000	10,000	CT-600‡
DR14-206-C		—	—	.55	—	.25	.54	.205/.187 x .020	100	1000	1000	10,000	
<b>DR14-250-C</b>		—	—	—	.57	—	.30	.55	.250 x .032	100	1000	1000	
<b>DR10-250-L</b>	12-10	—	—	.61	—	.30	.57	.250 x .032	50	500	500	5000	
DR18-205B-C	22-18	—	—	.54	—	.25	.53	.205/.187 x .032	100	1000	1000	10,000	CT-100 CT-200 CT-1570
DR18-206B-C		—	—	.54	—	.25	.53	.205/.187 x .020	100	1000	1000	10,000	
<b>DR18-250B-C</b>		—	—	—	.55	—	.30	.53	.250 x .032	100	1000	1000	
DR14-205B-C	16-14	—	—	.54	—	.25	.55	.205/.187 x .032	100	1000	1000	10,000	CT-100 CT-200 CT-1570
DR14-206B-C		—	—	.54	—	.25	.55	.205/.187 x .020	100	1000	1000	10,000	
<b>DR14-250B-C</b>		—	—	—	.55	—	.30	.55	.250 x .032	100	1000	1000	

Order the number of pieces required in multiples of standard package quantities.  
L = 50 pcs., C = 100 pcs., D = 500 pcs. and M = 1000 pcs.  
Prime items appear in **BOLD**.

### Non-Insulated

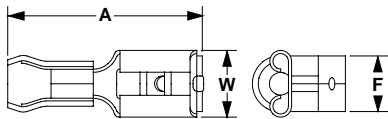
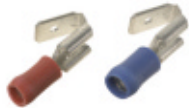
- Butted Seam



## PIGGYBACK DISCONNECTS

### Vinyl Barrel Insulated

- Insulation Grip Sleeve
- Female and male tabs combined in one disconnect
- Allows additional circuits to be added to existing equipment or ability to add future circuits—no costly rework or product changes are needed



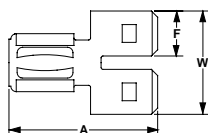
PANDUIT Part Number	Wire Range	Color code	Max. Ins.	Dim. (In.)			Tab Size	Std. Pkg. Qty.	Std. Ctn. Qty.	Bulk Pkg. Qty.	Bulk Ctn. Qty.	Crimp Tools
				A	W	F						
<b>DV18-250P-C</b>	22-18	Red	.130	.88	.29	.25	.250 x .032	100	1000	1000	6000	CT-100 CT-260 CT-1550 CT-1551
<b>DV14-250P-C</b>	16-14	Blue	.160	.88	.29	.25	.250 x .032	100	1000	1000	6000	
<b>D-250A-C</b>	—	—	—	.82	.57	.25	.250 x .032	100	1000	1000	10,000	

Order the number of pieces required in multiples of standard package quantities.  
C = 100 pcs. and M = 1000 pcs.  
Prime items appear in **BOLD**.

## DISCONNECT ADAPTER

### Non-Insulated

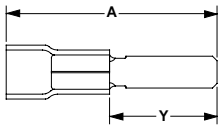
- Couples two female disconnects to one male disconnect (all .250 x .032)



## MALE BLADE ADAPTERS

### Vinyl Barrel Insulated

- Brazed Seam
- For Blade-Type Terminal Blocks

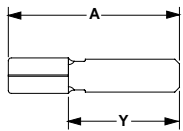


PANDUIT® Part Number	Wire Range	Color Code	Max. Ins.	Dimensions (In.)		Tab Size	Std. Pkg. Qty.	Std. Ctn. Qty.	Bulk Pkg. Qty.	Bulk Ctn. Qty.	Crimp Tools
				A	Y						
<b>DV18-145M-C</b>	22-18	Red	.140	.97	.42	.145 x .032	100	500	1000	6000	CT-600 CT-1550 CT-1551
<b>DV14-145M-C</b>	16-14	Blue	.170	.97	.42	.145 x .032	100	500	1000	6000	

Order the number of pieces required in multiples of standard package quantities.  
 C = 100 pcs. and M = 1000 pcs.  
 Prime items appear in **BOLD**.

### Non-Insulated

- Brazed Seam
- For Blade-Type Terminal Blocks



PANDUIT Part Number	Wire Range	Color Code	Max. Ins.	Dimensions (In.)		Tab Size	Std. Pkg. Qty.	Std. Ctn. Qty.	Bulk Pkg. Qty.	Bulk Ctn. Qty.	Crimp Tools
				A	Y						
<b>D18-145M-C</b>	22-18	—	—	.75	.42	.145 x .032	100	1000	1000	10,000	CT-100 CT-200 CT-600 CT-1570
<b>D14-145M-C</b>	16-14	—	—	.75	.42	.145 x .032	100	1000	1000	10,000	

Order the number of pieces required in multiples of standard package quantities.  
 C = 100 pcs. and M = 1000 pcs.  
 Prime items appear in **BOLD**.