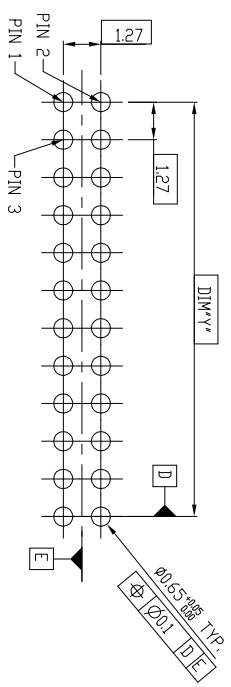
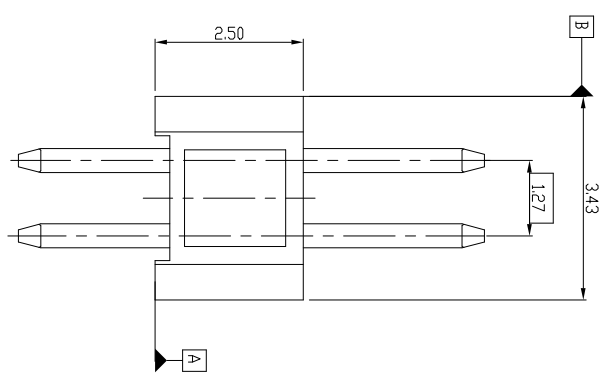
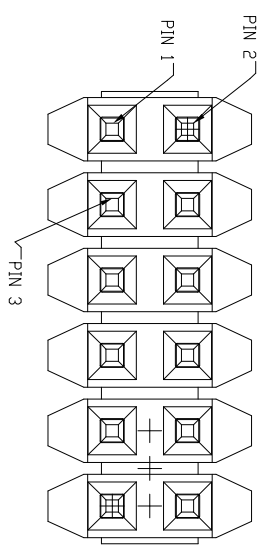
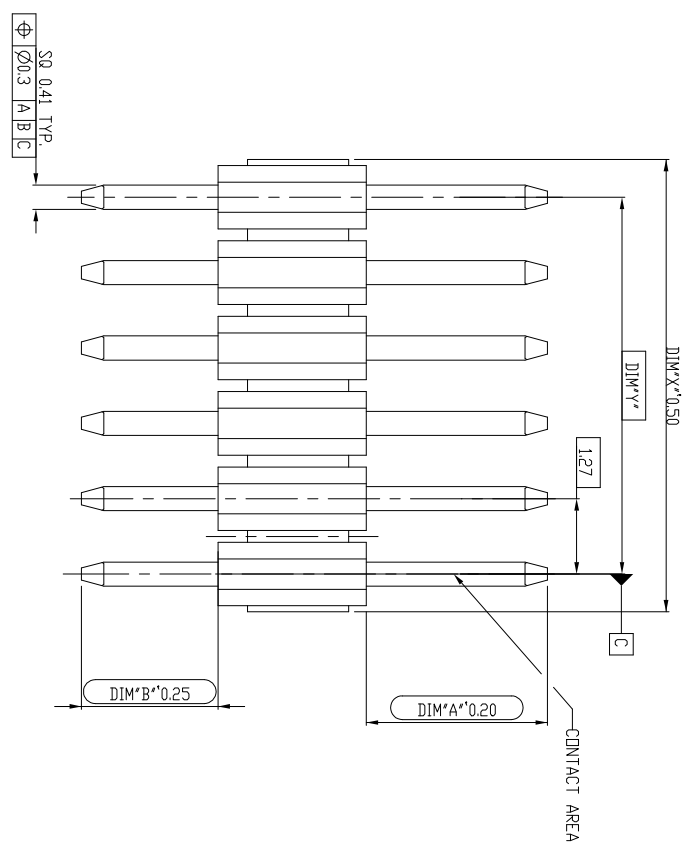


PART NO.
20021111



RECOMMENDED PCB LAYOUT
SCALE 5:000

- NOTES:
- 1.MATERIAL: HIGH TEMPERATURE THERMOPLASTIC, UL 94-V0 BLACK
 - 2.TERMINAL: COPPER ALLOY
 - 3.THE HOUSING WILL WITHSTAND EXPOSURE TO 260-C PEAK TEMPERATURE FOR 10 SECONDS IN A WAVE SOLDER DR VAPOR PHASE REFLOW OVEN.
 - 4.PRODUCT MEETS EUROPEAN UNION DIRECTIVES AND OTHER COUNTRY REGULATIONS AS DESCRIBED IN GS-22-008.
 - 5.PACKAGE SPEC: GS-14-1420

Form: A3-2016-02-24

1

2

PDS: Rev: G

STATUS: Released

Printed: Aug 22, 2017

5

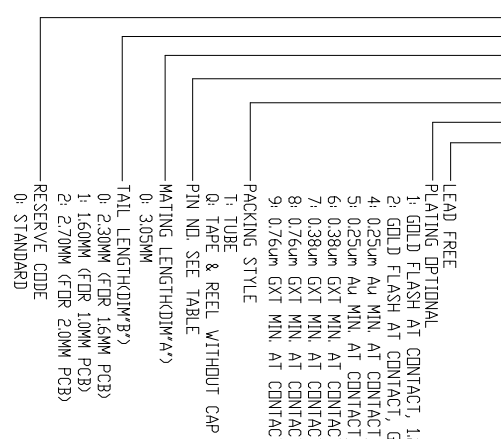
6

mat'l. code	ecn no	dr	date	surface	tolerance	projection	product family
E	EL-N-23548	TM	03/21/16	ISO 1302	ISO 406	ISO 1104	MINITEK127®
F	EL-N-25883	TONY	01/11/17	tolerances unless otherwise specified	.00±.20	mm	UNSHROUDED HDR VT TH
G	EL-N-27888	TONY	08/18/17	0±.2	.000±.10	scale 1:1	
sheet	revision	g	g	dr	ZK HU	09/28/12	dwg no
index	sheet	1	2	engr	ZK HU	09/28/12	20021111
				chr	BIAN RICK	09/28/12	sheet 1 of 2
				qppd	BIAN RICK	09/28/12	size
							A3
							type
							Product Customer Drawing

PART NO.	PDS.	DIM Y*	DIM Y**
20021111-XXX92XXLF	2 X 46	58.42	57.15
20021111-XXX94XXLF	2 X 47	59.69	58.42
20021111-XXX96XXLF	2 X 48	60.96	59.69
20021111-XXX98XXLF	2 X 49	62.23	60.96
20021111-XXXA0XXLF	2 X 50	63.50	62.23

PART NO.	PDS.	DIM Y*	DIM Y**
20021111-XXX04XXLF	2 X 2	2.54	1.27
20021111-XXX06XXLF	2 X 3	3.81	2.54
20021111-XXX08XXLF	2 X 4	5.08	3.81
20021111-XXX10XXLF	2 X 5	6.35	5.08
20021111-XXX12XXLF	2 X 6	7.62	6.35
20021111-XXX14XXLF	2 X 7	8.89	7.62
20021111-XXX16XXLF	2 X 8	10.16	8.89
20021111-XXX18XXLF	2 X 9	11.43	10.16
20021111-XXX20XXLF	2 X 10	12.70	11.43
20021111-XXX22XXLF	2 X 11	13.97	12.70
20021111-XXX24XXLF	2 X 12	15.24	13.97
20021111-XXX26XXLF	2 X 13	16.51	15.24
20021111-XXX28XXLF	2 X 14	17.78	16.51
20021111-XXX30XXLF	2 X 15	19.05	17.78
20021111-XXX32XXLF	2 X 16	20.32	19.05
20021111-XXX34XXLF	2 X 17	21.59	20.32
20021111-XXX36XXLF	2 X 18	22.86	21.59
20021111-XXX38XXLF	2 X 19	24.13	22.86
20021111-XXX40XXLF	2 X 20	25.40	24.13
20021111-XXX42XXLF	2 X 21	26.67	25.40
20021111-XXX44XXLF	2 X 22	27.94	26.67
20021111-XXX46XXLF	2 X 23	29.21	27.94
20021111-XXX48XXLF	2 X 24	30.48	29.21
20021111-XXX50XXLF	2 X 25	31.75	30.48
20021111-XXX52XXLF	2 X 26	33.02	31.75
20021111-XXX54XXLF	2 X 27	34.29	33.02
20021111-XXX56XXLF	2 X 28	35.56	34.29
20021111-XXX58XXLF	2 X 29	36.83	35.56
20021111-XXX60XXLF	2 X 30	38.10	36.83
20021111-XXX62XXLF	2 X 31	39.37	38.10
20021111-XXX64XXLF	2 X 32	40.64	39.37
20021111-XXX66XXLF	2 X 33	41.91	40.64
20021111-XXX68XXLF	2 X 34	43.18	41.91
20021111-XXX70XXLF	2 X 35	44.45	43.18
20021111-XXX72XXLF	2 X 36	45.72	44.45
20021111-XXX74XXLF	2 X 37	46.99	45.72
20021111-XXX76XXLF	2 X 38	48.26	46.99
20021111-XXX78XXLF	2 X 39	49.53	48.26
20021111-XXX80XXLF	2 X 40	50.80	49.53
20021111-XXX82XXLF	2 X 41	52.07	50.80
20021111-XXX84XXLF	2 X 42	53.34	52.07
20021111-XXX86XXLF	2 X 43	54.61	53.34
20021111-XXX88XXLF	2 X 44	55.88	54.61
20021111-XXX90XXLF	2 X 45	57.15	55.88

20021111 - X X X XX X X LF



- LEAD FREE
- PLATING OPTIONAL
- 1: GOLD FLASH AT CONTACT, 127um MIN. MATTE TIN AT TAIL
- 2: GOLD FLASH AT CONTACT, GOLD FLASH AT TAIL
- 4: 0.25um Au MIN. AT CONTACT, 127um MIN. MATTE TIN AT TAIL
- 5: 0.25um Au MIN. AT CONTACT, GOLD FLASH AT TAIL
- 6: 0.38um GXT MIN. AT CONTACT, 127um MIN. MATTE TIN AT TAIL
- 7: 0.38um GXT MIN. AT CONTACT, GOLD FLASH AT TAIL
- 8: 0.76um GXT MIN. AT CONTACT, 127um MIN. MATTE TIN AT TAIL
- 9: 0.76um GXT MIN. AT CONTACT, GOLD FLASH AT TAIL
- PACKING STYLE
- TUBE
- TAPE & REEL WITHOUT CAP
- PIN N.D. SEE TABLE
- MATING LENGTH(DIM*A)
- TAIL LENGTH(DIM*B)
- 0: 3.05MM
- 0: 2.30MM (FOR 1.6MM PCB)
- 1: 1.60MM (FOR 1.0MM PCB)
- 2: 2.70MM (FOR 2.0MM PCB)
- RESERVE CODE
- 0: STANDARD

mat'l. code	ecn no	dr	date	surface	tolerance	ISO 1302	ISO 406	ISO	projection	scale	1:1	title	product family	dwg no	sheet	of	size
				ISO 1302	ISO 406	ISO	ISO	ISO	110°	mm	1:1	UNSHROUDED HDR VT TH	MINITEK127®	20021111	2	of 2	A3
				tolerances unless otherwise specified	0.4:30	0.004:10	0.004:10	0.004:10	mm	1:1	1:1						
				angles	0.4:30	0.004:10	0.004:10	0.004:10	mm	1:1	1:1						
				in	0.4:30	0.004:10	0.004:10	0.004:10	mm	1:1	1:1						
				dr	ZK HU	09/28/12	09/28/12	09/28/12	ZK HU	09/28/12	09/28/12						
				eng	ZK HU	09/28/12	09/28/12	09/28/12	ZK HU	09/28/12	09/28/12						
				chr	BIAN RICK	09/28/12	09/28/12	09/28/12	BIAN RICK	09/28/12	09/28/12						
				qppd	BIAN RICK	09/28/12	09/28/12	09/28/12	BIAN RICK	09/28/12	09/28/12						
				sheet	revision	g	g										
				index	sheet	1	2										



D

C

B

A

D

C

B

A

1

2

3

4

5

6

7

8

9

10

11

12

13

14

15

16

17

18

19

20

21

22

23

24

25

26

27

28

29

30

31

32

33

34

35

36

37

38

39

40

41

42

43

44

45

46

47

48

49

50

51

52

53

54

55

56

57

58

59

60

61

62

63

64

65

66

67

68

69

70

71

72

73

74

75

76

77

78

79

80

81

82

83

84

85

86

87

88

89

90

91

92

93

94

95

96

97

98

99

100

101

102

103

104

105

106

107

108

109

110

111

112

113

114

115

116

117

118

119

120

121

122

123

124

125

126

127

128

129

130

131

132

133

134

135

136

137

138

139

140

141

142

143

144

145

146

147

148

149

150

151

152

153

154

155

156

157

158

159

160

161

162

163

164

165

166

167

168

169

170

171

172