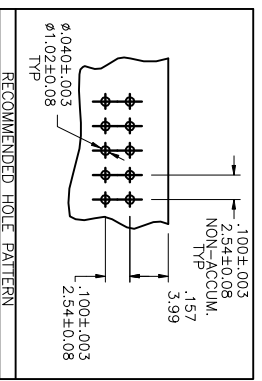
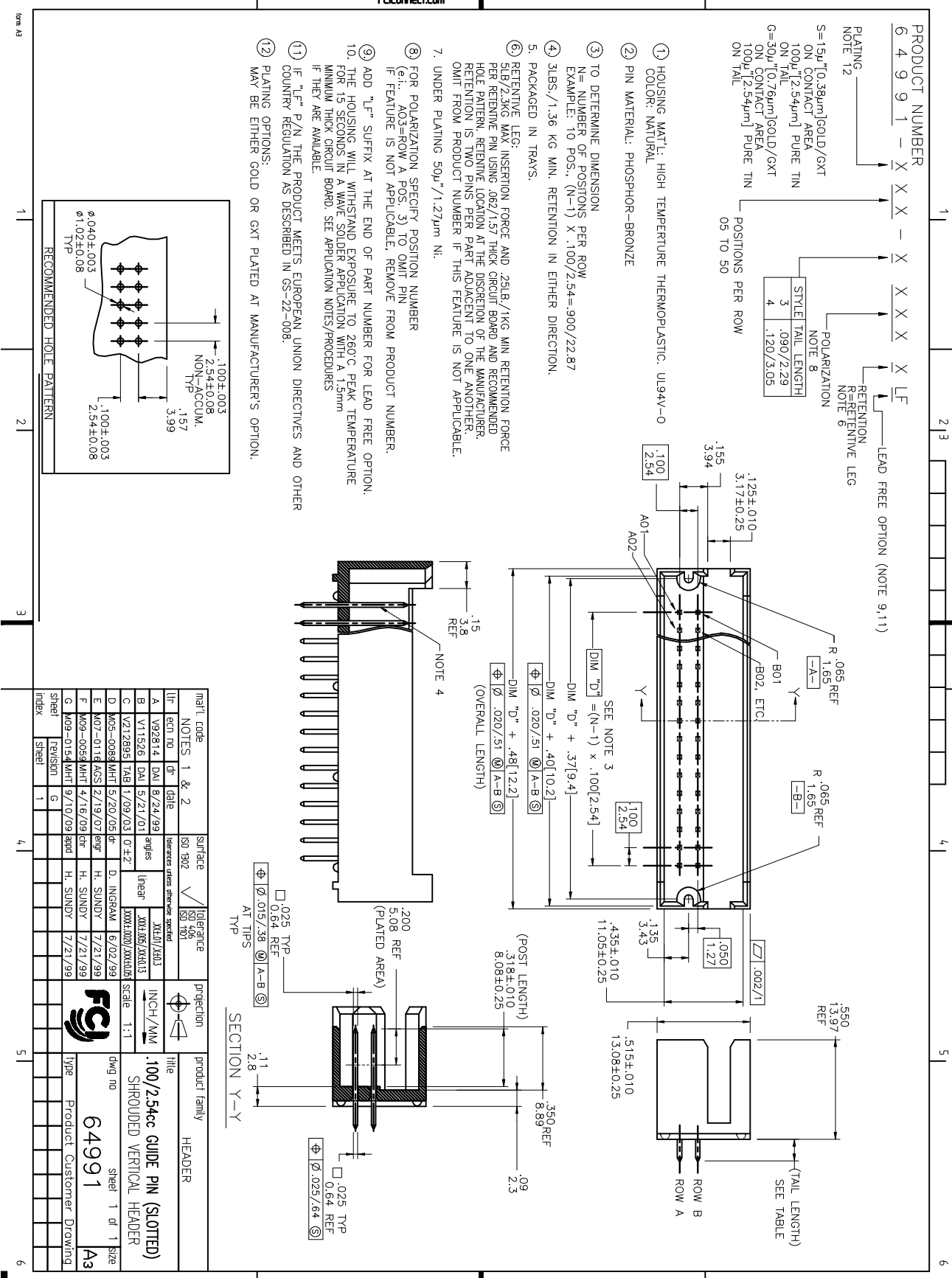


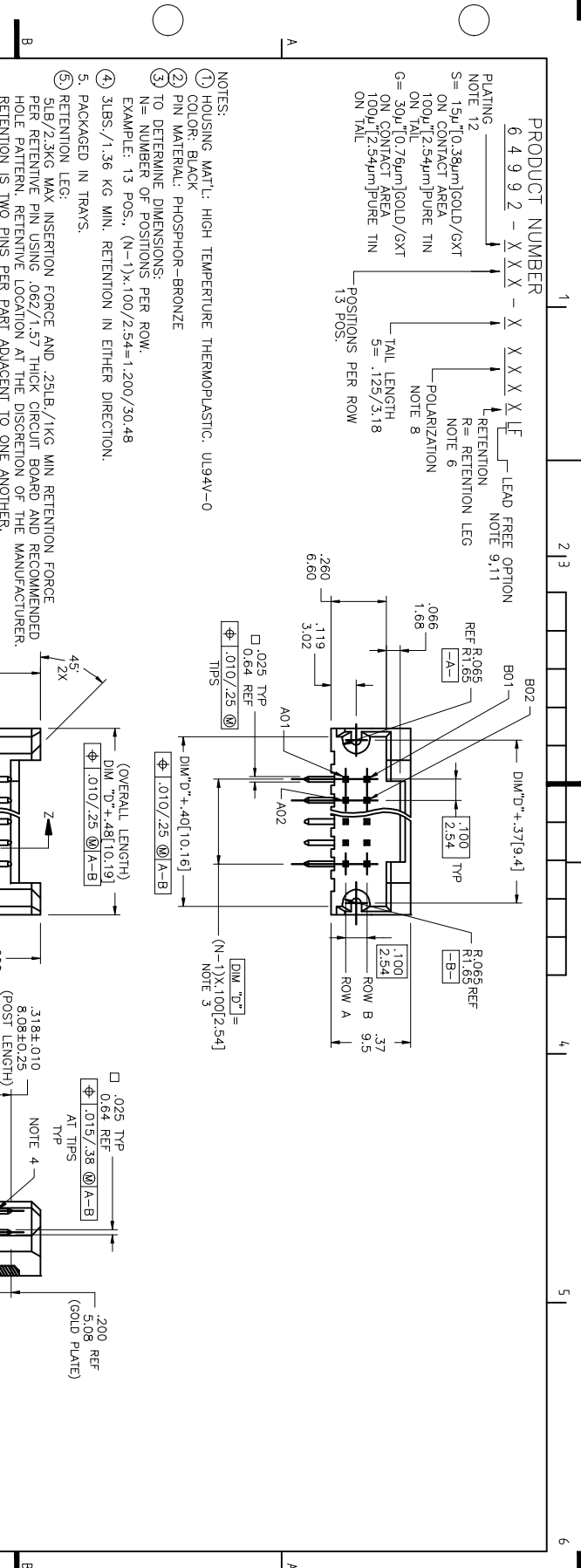


FCIconnect.com

Copyright FCI



part code	date	surface	tolerance	projection	product family
lit	rev	date	ISO 1902	ISO 1501	ISO 1501
A	V92814	DAL 8/24/99	ISO 1902	ISO 1501	ISO 1501
B	V11526	DAI 5/21/01	ISO 1902	ISO 1501	ISO 1501
C	V212895	TAB 11/09/03	ISO 1902	ISO 1501	ISO 1501
D	M05-0089	MHT 5/29/05	ISO 1902	ISO 1501	ISO 1501
E	M07-0116	AGS 2/19/07	ISO 1902	ISO 1501	ISO 1501
F	M09-0058	MHT 4/16/09	ISO 1902	ISO 1501	ISO 1501
G	M09-0154	MHT 9/10/09	ISO 1902	ISO 1501	ISO 1501
Sheet	revision	G	1	1	1



**PRODUCT NUMBER**  
6 4 9 9 2 - X X X X - X X X X X L F

**LEAD FREE OPTION**  
NOTE 9,11

**RETENTION LEG**  
NOTE 6

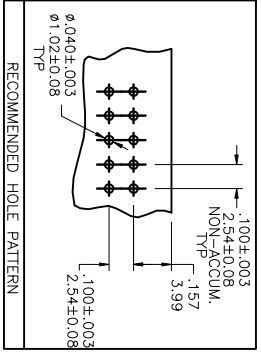
**POLARIZATION**  
NOTE 8

**TAIL LENGTH**  
5 = .125 / 3.18

**POSITIONS PER ROW**  
13 POS.

**PLATING**  
NOTE 12  
S = 15u"10.39um[GOLD]/GXT  
ON CONTACT AREA  
100u"12.54um[PURE TIN  
ON TAIL  
G = 30u"10.76um[GOLD]/GXT  
ON CONTACT AREA  
100u"12.54um[PURE TIN  
ON TAIL

- NOTES:**
- HOUSING MAT'L: HIGH TEMPERATURE THERMOPLASTIC. UL94V-0
  - COLOR: BLACK
  - PIN MATERIAL: PHOSPHOR-BRONZE
  - TO DETERMINE DIMENSIONS:  
N = NUMBER OF POSITIONS PER ROW  
EXAMPLE: 13 POS., (N-1)X.100/2.54=1.200/30.48
  - 3LBS./1.36 KG MIN. RETENTION IN EITHER DIRECTION.
  - PACKAGED IN TRAYS.
  - RETENTION LEG:  
5LB/2.3KG MAX. INSERTION FORCE AND .25LB/11KG MIN. RETENTION FORCE PER RETENTIVE PIN USING .062/.157 THICK CIRCUIT BOARD AND RECOMMENDED HOLE PATTERN. RETENTIVE LOCATION AT THE DISCRETION OF THE MANUFACTURER. RETENTION IS TWO PINS PER PART ADJACENT TO ONE ANOTHER. IF FEATURE IS NOT APPLICABLE, REMOVE FROM PRODUCT NUMBER.
  - UNDER PLATING: .050u"/1.2um NI.
  - FOR POLARIZATION SPECIFY POSITION NUMBER (i.e., A03=ROW A POS. 3) TO OMIT PIN. IF FEATURE IS NOT APPLICABLE, REMOVE FROM PRODUCT NUMBER.
  - ADD "LF" SUFFIX AT THE END OF PART NUMBER FOR LEAD FREE OPTION.
  - THE HOUSING WILL WITHSTAND EXPOSURE TO 260°C PEAK TEMPERATURE FOR 15 SECONDS IN A WAVE SOLDER APPLICATION WITH A 1.5mm MINIMUM THICK CIRCUIT BOARD. SEE APPLICATION NOTES/PROCEDURES IF THEY ARE AVAILABLE.
  - THIS PRODUCT MEETS EUROPEAN UNION DIRECTIVES AND OTHER COUNTRY REGULATION AS DESCRIBED IN GS-22-008.
  - PLATING OPTIONS:  
MAY BE EITHER GOLD OR GXT PLATED AT MANUFACTURER'S OPTION.



form A3

Mat'l. code	ECN no	DF	Date	Surface	Tolerance	projection	product family
C 405-0224	MHT	10/26/09		ISO 1902	ISO 406		HEADER
D 405-0116	AGS	2/19/07		ISO 1701	ISO 1701		SHROUDED R/A HEADER
E 407-0248	MHT	5/30/07		ISO 1902	ISO 406		SHROUDED R/A HEADER
F 409-0099	MHT	4/16/09		ISO 1902	ISO 406		SHROUDED R/A HEADER
G 409-0099	MHT	7/06/09		ISO 1902	ISO 406		SHROUDED R/A HEADER
H 409-0136	MHT	9/03/09		ISO 1902	ISO 406		SHROUDED R/A HEADER
J 409-0154	MHT	9/10/09		ISO 1902	ISO 406		SHROUDED R/A HEADER



part no	revision	date	description
100/2.54mm	1	10/26/09	GUIDE PIN
64992	1	10/26/09	SHROUDED R/A HEADER