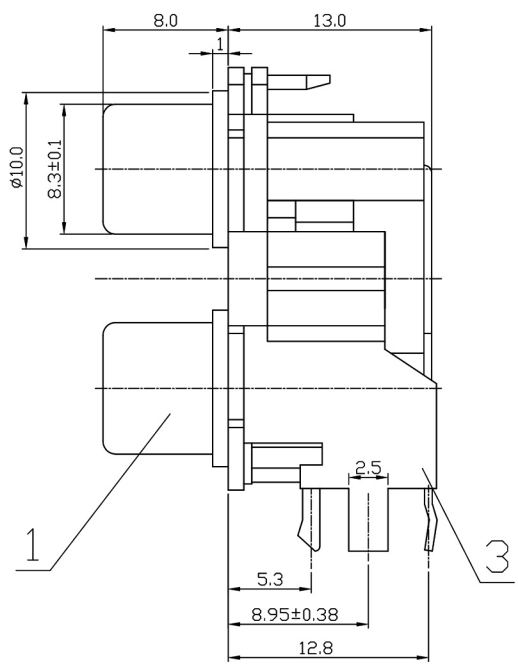
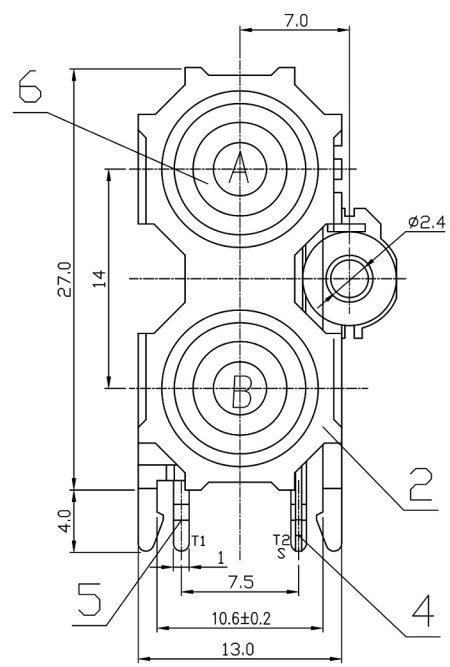
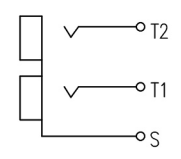


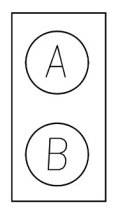
**RoHS  
Compliant  
Drawing For  
Reference Only**



CIRCUIT DIAGRAM



COLOR LAYOUT



NOTE:

ELECTRICAL PROPERTIES:

- INSULATION RESISTANCE : 100M Ω MIN
- DIELECTRIC WITHSTANDING : AC 500V(50 HZ) 1MIN
- RATING LOAD : DC 12V, 1A
- CONTACT RESISTANCE : 30m Ω MAX

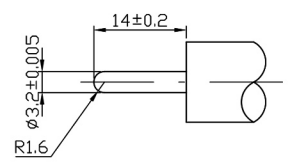
MECHANICAL PROPERTIES:

- INSERTION FORCE : 3 N~25N
- EXTRACTION FORCE : 3 N~25N
- DURABILITY : 1000 TIMES

ENVIRONMENT:

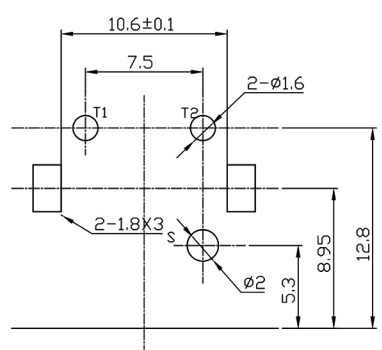
- TEMPERATURE: -40°C / 70°C

GAUGE PLUG



DIMENSIONS OF PC BOARD HOLES(COMMEND)

TOP VIEW(T=1.6mm) ⊙



Technical requirement :

1. This product should meet EU RoHS related requirement.
2. The surface of plastic part should be without any crackle such as burr,lack,and so on phenomenon.
3. The surface of metal part should be without any defect such as scaur,nick,oxidation and plating problem.
4. The electronic performance should be the same as spec.

GENERAL TOLERANCES (UNLESS SPECIFIED)	
.X ±0.38	X.* ±3.0'
.XX ±0.20	.X* ±2.0'
.XXX ±0.10	.XX* ±1.5'

ITEM	NAME	Q'TY	MATERIAL
6	WASHER	2	PBT
5	PINCER NEEDLE(S)	1	BRASS
4	PINCER NEEDLE(L)	1	BRASS
3	BASE	1	ABS
2	COVER	1	ABS
1	OUTER CONDUCTOR	1	BRASS

**DCI DRAGON CITY INDUSTRIES LIMITED**

Item Name	2P RCA JACK BOARD	Tolerance :
Item No.	RS-213(ABS)	Unit : mm ⊕

Design	K.W Law	Remark	Scale
Drawing	W.K Yeung	Remark	Material
Check	K.L Wong	Remark	Drawing No. A409260915
Approval	K.W Chan	Remark	Sheet