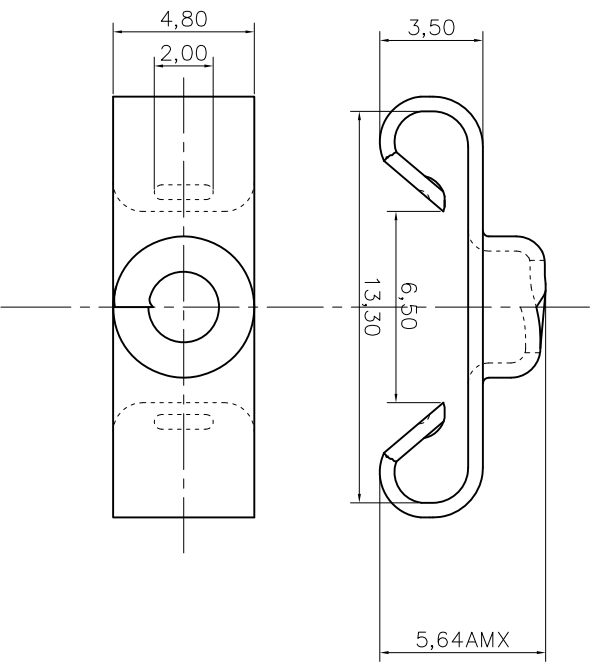


This document is the property of Amphenol Corporation and is delivered on the understanding that it is not to be retransmitted, reproduced or used in any way without the prior consent, and that no right is granted to disclose or to use any information in this document.



Customer drawing



REVISIONS			DATE	APPROVED
S/N	EON	DESCRIPTION		
1			Mar/04/11	

D-SUB TECHNICAL DATA

MATERIAL : Steel 100u" min tin over 50u" min nickel
 PACKAGE : Delivered separately
 1 P/N : 10 sets
 MARKING : Amphenol---(Series No.)
 Commercial reference
 Manufacturing date

PRODUCT CODE

L 17D20419EX
 L: RoHS Compliance
 X: 10 sets

DIMENSIONS SPECIFIED		APPROVAL		TITLE	
TOLERANCES	UNIT	DRAWN	CHECKED	DATE	DESCRIPTION
±0.30	mm				Amphenol
±0.20	mm				Amphenol East Asia Limited
±0.20	mm				
UNLESS OTHERWISE SPECIFIED					
TOLERANCES					
D.S.					
FRACTIONS ±/±					
ANGLES ±/±					
FOR MATERIALS AND FINISHES					
SEE NOTES					
REMOVE SHARP EDGES					
DIMENSIONS					
D-S					
INCHES					
MM					
ANGLE OF PROJECTION					
FIRST ANGLE					
SIZE DRAWING NO.					
A4					
SCALE					
NONE					
SHEET 1 OF 1					
REV.					
1					