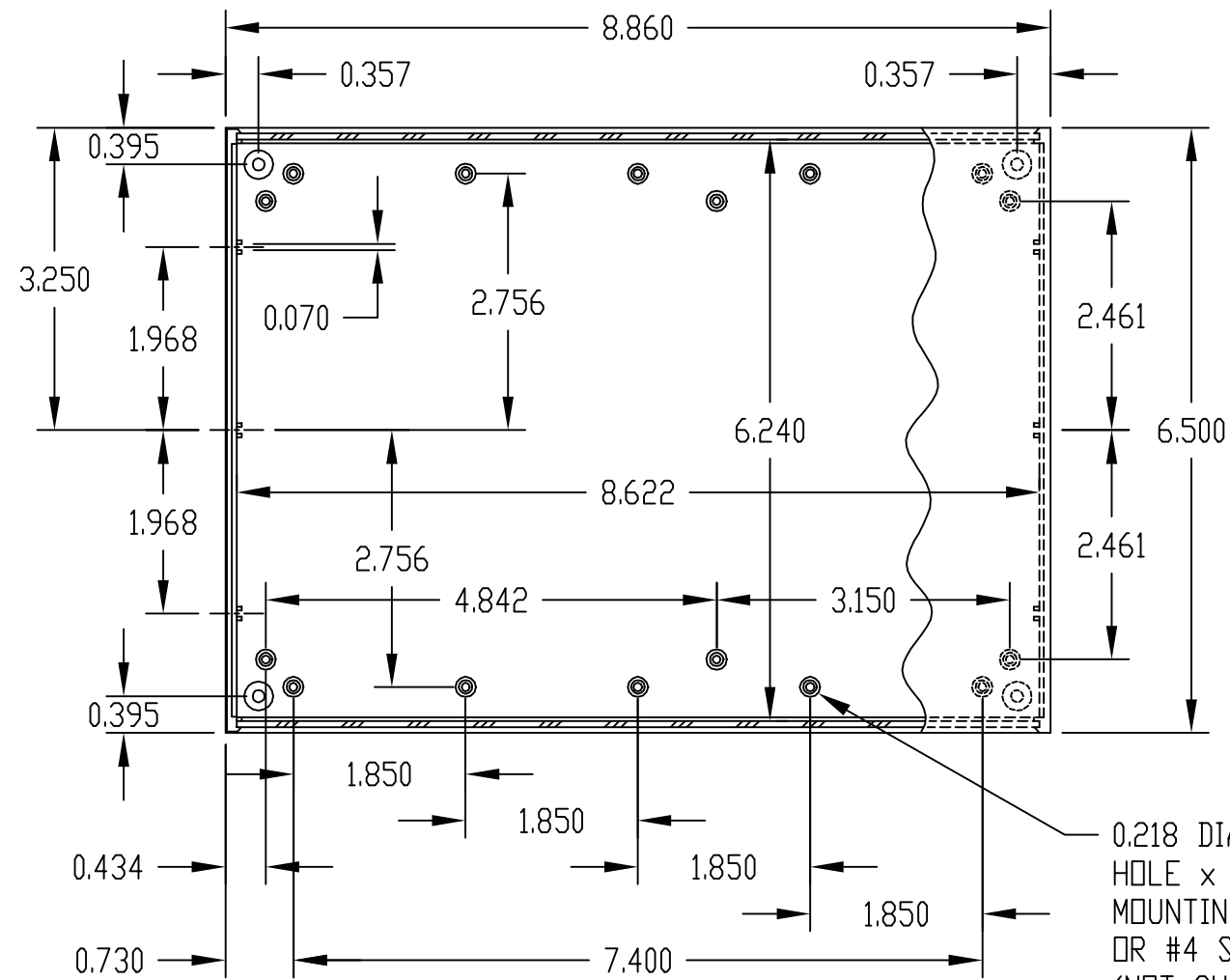


PART NAME

PLASTICASE (STYLE D)

PART No.

PC-11481 & PC-11481-A & PC-11481-LG & PC-11481-LGA



0.218 DIA. BOSS WITH 0.090 DIA. HOLE x 0.218 DEEP - (16) PLACES
 MOUNTING BOSSES USE EITHER M2.5 METRIC OR #4 STD. SHEET METAL SCREWS x 0.188" LG. (NOT SUPPLIED)

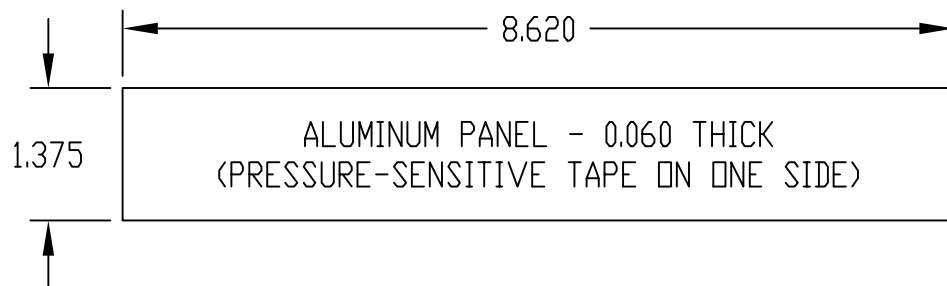
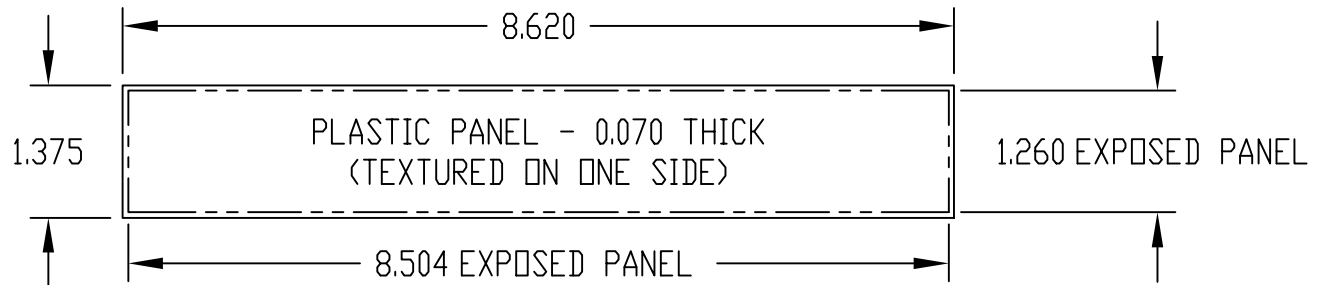
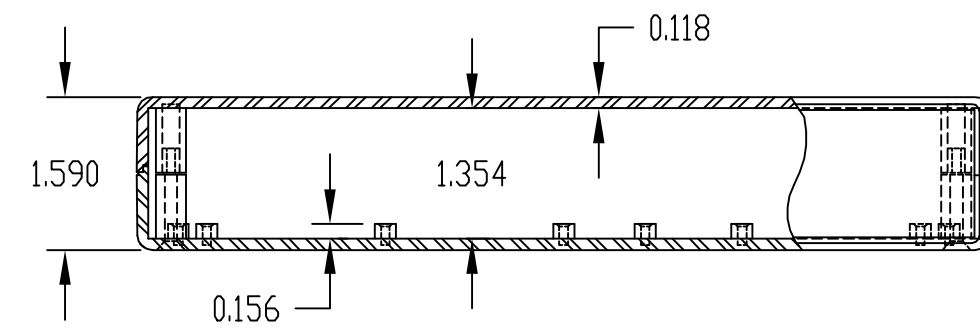
MATERIAL & FINISH:

- (NO SUFFIX) UL94V-0 FLAME RETARDANT ABS
DARK GRAY PLASTIC COVERS WITH LIGHT GRAY PLASTIC PANELS.
- (SUFFIX -A) UL94V-0 FLAME RETARDANT ABS
DARK GRAY PLASTIC COVERS WITH NATURAL FINISH ALUMINUM PANELS.
- (SUFFIX -LG) HIGH-IMPACT ABS
LIGHT GRAY PLASTIC COVERS WITH BLACK PLASTIC PANELS.
- (SUFFIX -LGA) HIGH-IMPACT ABS
LIGHT GRAY PLASTIC COVERS WITH NATURAL FINISH ALUMINUM PANELS.

FOUR (4) M3 x 0.984" LG. SCREWS SUPPLIED FOR ASSEMBLY.

FOUR (4) RUBBER SELF-ADHESIVE FEET SUPPLIED.

NOTE: ALL DIMENSIONS HAVE ±0.015 TOLERANCE UNLESS OTHERWISE SPECIFIED.



Mouser Electronics

Authorized Distributor

Click to View Pricing, Inventory, Delivery & Lifecycle Information:

[Bud Industries:](#)

[PC-11481](#)