

THIS IS ISSUED IN STRICT CONFIDENCE THAT IT IS NOT USED AS A BASIS FOR MANUFACTURE OR SALE AND THAT IT IS NOT COPIED, REPRINTED OR DISCLOSED TO A THIRD PARTY EITHER WHOLLY OR IN PART WITHOUT THE PRIOR WRITTEN CONSENT OF CAL TEST ELECTRONICS, INC.

REVISIONS			
REV.	DESCRIPTIONS	DATE	APPROVED
—	CLASS A RELEASED	11/12/07	

- DO-IT-YOURSELF (DIY) Ø4mm RIGHT-ANGLE SHEATH BANANA PLUG, SCREW ATTACHMENT
- SPECIFICATIONS:
INSULATOR BODY: POLYPROPYLENE
PLUG BODY: BRASS, NICKEL PLATED
CONTACT SPRING: BECU, NICKEL PLATED
- RATING:
VOLTAGE: 1000 V CATIII P2 (* Instructions)
REINFORCED INSULATION, CE MARK
CURRENT: 20 A MAX.
INTERNAL RESISTANCE: <10 mΩ
TEMPERATURE: -20° TO +80° C.
- MAXIMUM WIRE SIZES:
CONDUCTOR: Ø .090 (12AWG)
INSULATION: Ø .16 (Ø 4.0)
STRIP LENGTH: .20 (5)

PART NUMBER

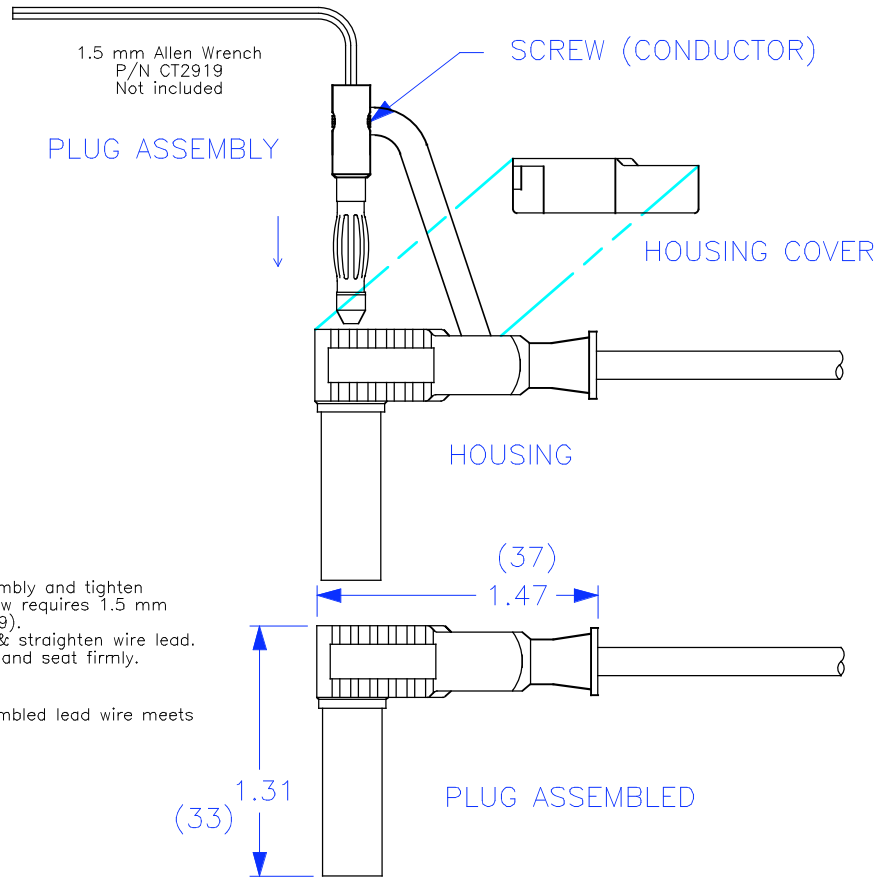
CT3203-#

- COLOR:
- 0 - BLACK
 - 2 - RED
 - 4 - YELLOW
 - 5 - GREEN
 - 6 - BLUE
 - 9 - WHITE

Assembly Instructions:

- Slide wire through Housing.
- Strip wire .20" (5 mm).
- Insert stripped wire into Plug Assembly and tighten Set-Screw (conductor). Set-Screw requires 1.5 mm Allen Wrench (Cal Test P/N CT2919).
- Push Plug Assembly into Housing & straighten wire lead.
- Push Housing Cover onto Housing and seat firmly.
- Plug is assembled.

* IEC specification is met only if assembled lead wire meets requirement and voltage rating.



THIRD ANGLE PROJECTION		UNLESS OTHERWISE SPECIFIED DIMENSIONS ARE IN INCHES TOLERANCES ARE: FRACTIONS DECIMALS ± 1/32 .XX ± .02 DO NOT SCALE DRAWING .XXX ± .005	CONTRACT NO.		Cal Test Electronics 22820 Savi Ranch Parkway Yorba Linda, CA 92887-4610				
			APPROVALS	DATE	TITLE				
MATERIAL		DRAWN	WDH	11/12/07		DIY 4mm RIGHT-ANGLE SHEATH PLUG, SCREW ATTACHMENT			
FINISH		CHECKED			SIZE	CAGE CODE	DWG. NO.	REV.	
NEXT ASSY		ENGR.			A	43F45	P320300	—	
USED ON		DESIGN ACTIVITY			SCALE	1:1	SHEET 1 OF 1		
APPLICATION									

Mouser Electronics

Authorized Distributor

Click to View Pricing, Inventory, Delivery & Lifecycle Information:

Cal Test Electronics:

[CT3203-9](#) [CT3203-5](#) [CT3203-4](#) [CT3203-6](#) [CT3203-0](#) [CT3203-2](#) [CT3203-S-0](#) [CT3203-S-4](#) [CT3203-S-9](#) [CT3203-S-2](#) [CT3203-S-6](#) [CT3203-S-5](#)