

PRODUCT NUMBER
5 4 2 0 2 - X X X X X = X X X L F

PLATING
 S=15µm [0.38µm]
 ON CONTACT AREA
 100µm [2.5µm] IN
 ON TAIL (NOTE 13)
 G=30µm [0.76µm]
 ON CONTACT AREA
 100µm [2.5µm] IN
 ON TAIL (NOTE 13)
 T=100µm [2.5µm] IN
 ON CONTACT AREA
 AND ON TAIL (SEE NOTE 11)
 F=2µm [0.05µm] GOLD
 ON CONTACT AREA
 AND ON TAIL

LEAD FREE OPTION NOTE 9 & 10

POLARIZATION
 NOTE 6

PACKAGING TYPE, NOTE 5

POSITIONS PER ROW
 02 TO 20

LEAD STYLE	POST	TAIL OVERALL WIDTH	PCB LAYOUT
08	0.230/5.84	.290+0.015 / -7.37+0.38	FIGURE 1
30	0.318/8.08		
60	0.575/14.60	.374+0.015 / -9.50+0.43	FIGURE 2

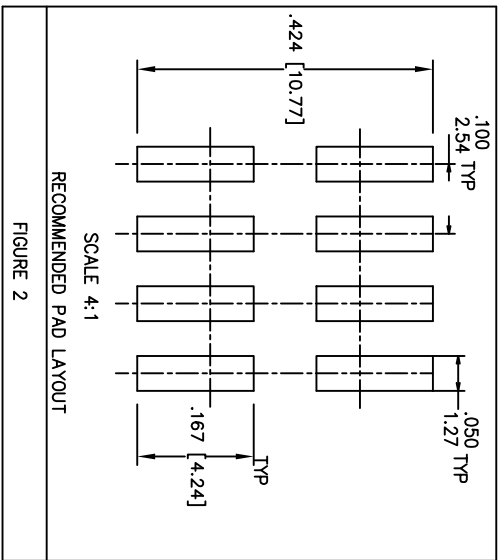
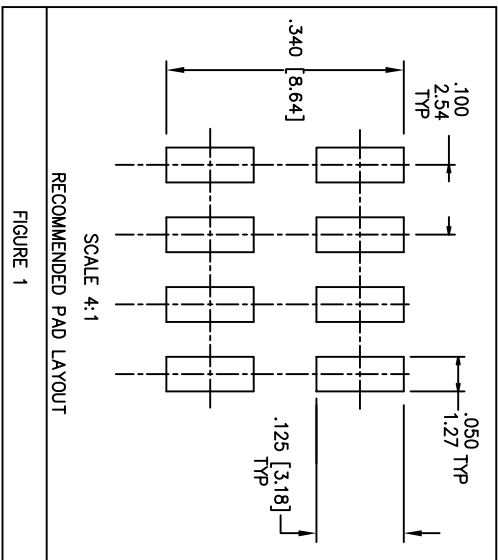
NOTES:

① HOUSING MAT'L: HIGH TEMPERATURE THERMOPLASTIC.
 FLAME RETARDANT PER UL 94V-0.
 COLOR: BLACK

OR
 MINERAL FILLED LCP FLAME RETARDANT
 PER UL-94V-0. COLOR: BLACK.

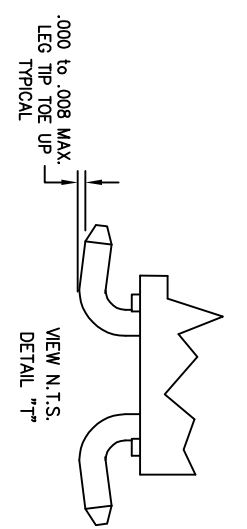
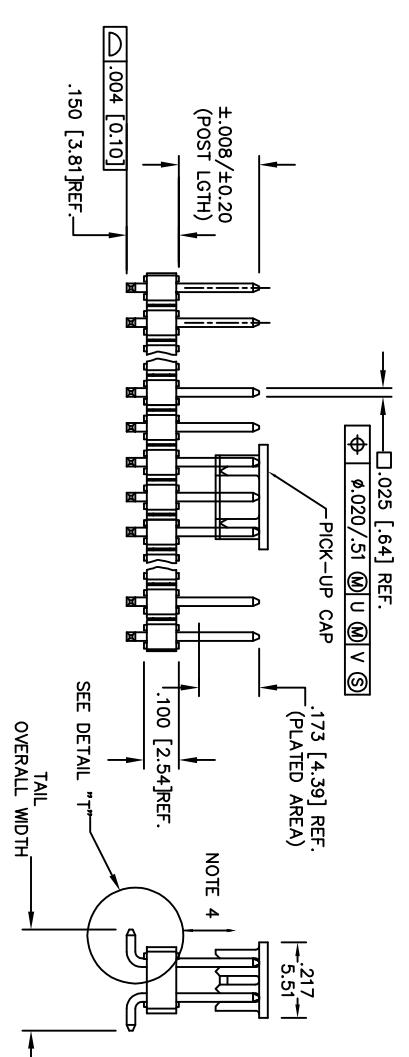
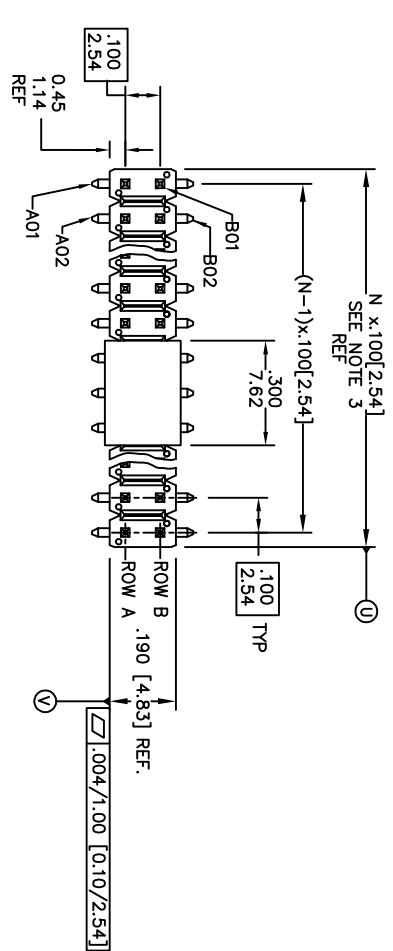
THESE PART NUMBERS WILL WITHSTAND EXPOSURE TO 260 C PEAK TEMPERATURE FOR 20 SECONDS IN WAVE SOLDER, INFRA-RED OR VAPOR PHASE SOLDER PROCESS.

- ② PIN MATERIAL: PHOSPHOR-BRONZE
- ③ TO DETERMINE DIMENSIONS:
 N = NUMBER OF POSITIONS, ROW.
 EXAMPLE: 10 POS, N x 1.00/2.54=1.00/2.54
- ④ 2LBS/0.9KG MIN. PIN RETENTION IN EITHER DIRECTION.
- ⑤ PACKAGING: NONE =POLY BAGS WITHOUT PICKUP CAP.
 T=TUBES (OMIT DASH IF NOT POLARIZED).
 P =TUBES WITH PICKUP CAPS.
 A =TAPE AND REEL WITH PICKUP CAPS.
 C =CUSTOMIZED TAPE AND REEL WITH PICKUP CAPS.
 D =TAPE AND REEL WITHOUT PICKUP CAPS.
 S =SPECIAL REQUEST OF TAPE AND REEL WITH PICKUP CAPS.
 M =TAPE AND REEL WITH PICKUP CAPS FOR SPECIAL CUSTOMER.
- ⑥ FOR POLARIZATION, SPECIFY POSITION NUMBER (i.e. A03=ROW A POS. 3) TO OMIT PIN.
 OMIT FROM PRODUCT NUMBER IF THIS FEATURE IS NOT APPLICABLE.
 PRODUCT MANAGEMENT APPROVAL REQUIRED PRIOR TO RELEASE OR SALE OF POLARIZED PRODUCTS.
- 7. UNDERPLATING: 50µm [1.2µm Ni.
- 8. PIN TIPS ON Sn PLATED PRODUCT MAY HAVE BARE METAL ON TWO SIDES, BOTH ENDS.
- ⑨ PART NUMBERS WITH "L" SUFFIX AT THE END ARE LEAD FREE.
- ⑩ THESE PRODUCTS MEETS EUROPEAN UNION DIRECTIVES AND OTHER COUNTRY REGULATION AS DESCRIBED IN GS-22-008.
- ⑪ "THIS PRODUCT HAS 100% PURE TIN PLATING IN THE INTERFACE AND HAS NOT BEEN TESTED FOR WHISKER GROWTH IN ALL INTERCONNECT ENVIRONMENTS."
- 12. THE HOUSING WILL WITHSTAND EXPOSURE TO 260°C PEAK TEMPERATURE FOR 20 SECONDS IN A CONVECTION, INFRA-RED OR VAPOR PHASE REFLOW OVEN. SEE APPLICATION NOTES/PROCEDURES IF THEY ARE AVAILABLE.
- ⑬ MAY BE EITHER GOLD OR GXT PLATED AT MANUFACTURER'S OPTION



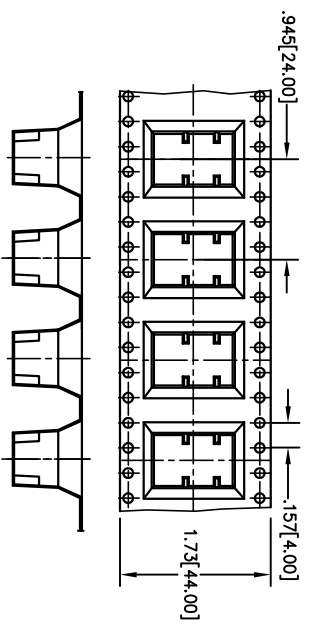
mat'l. code	surface	tolerance	projection	product family
SEE NOTES 1&2	ISO 1302	ISO 406	ISO 1101	BERGSTIK
ltf	ecm no ltr date	tolerances unless otherwise specified	INCH/MM	title
W	EX-N-12271 LZ 2012-07-15		scale 1:1	.100 UNSHROUDED HDR
X	EX-N-14748 ZK 2013-06-14			DUAL ROW VERT. SMT.
Y	EX-N-19884 JH 2015-01-15			sheet 1 of 4 size
AA	EX-N-21233 MZ 2015-06-25			54202
AB	EX-N-22984 MZ 2015-12-22			Product Customer Drawing
sheet	revision	AB	AB	A3
index	sheet	1	2	

PRODUCT NUMBER
SEE SHEET 1

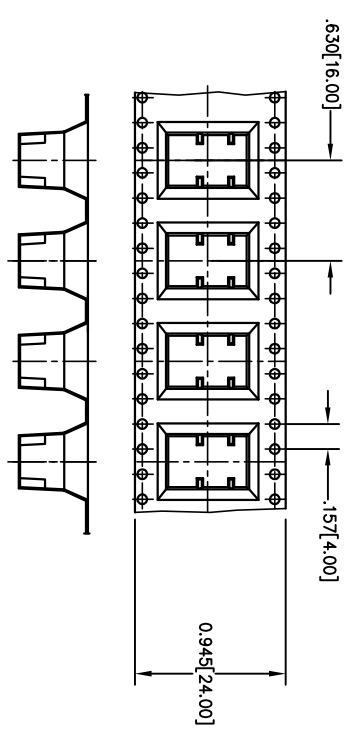


mat'l. code	surface	tolerance	projection	product family
SEE NOTES 1&2	ISO 1302	ISO 406	INCH/MM	BERGSTIK
ecn no	date	tolerances unless otherwise specified	scale 1:1	title
AB				.100 UNSHROUDED HDR
				DUAL ROW VERT. SMT.
				dwg no
				54202
				sheet 2 of 4 size
				A3
				type
				Product Customer Drawing
sheet	revision			
index	sheet			

1 2 3 4 5 6



54202-*****SLF
SPECIAL REQUEST CARRIER TAPE
FOR 2x5 SIZE(SEE NOTES 5)



54202-*****MLF
TAPE AND REEL WITH PICK UP
CAP FOR SPECIAL CUSTOMER
FOR 2x5 SIZE(SEE NOTES 5)

mat'l code		surface		tolerance		projection		product family	
SEE NOTES 1&2		ISO 1302		ISO 406		INCH/MM		BERGSTIK	
ecn no		date		tolerances unless otherwise specified		scale 1:1		title	
AB				XXMM/XXMM				.100 UNSHROUDED HDR	
		angles		lineof				DUAL ROW VERT. SMT.	
		0±.2°		XXXMM/XXXMM				sheet 4 of 4 size	
		dr		D.JINGRAM		1999-09-17		A3	
		engr		H.SUNDAY		1999-07-21		type	
		chr		H.SUNDAY		1999-07-21		Product Customer Drawing	
		pppd		H.SUNDAY		1999-07-21			
sheet		revision							
index		sheet							