

Basic
Part Number

A = Primer Coat
Required

M85049/95 - 10A - A

Shell Size
and Class

APPLICATION NOTES

1. Assembly identified with manufacturer's name and part number, space permitting.
2. For complete dimensions, see the applicable Military Specification.
3. Metric dimensions (mm) are in parentheses.

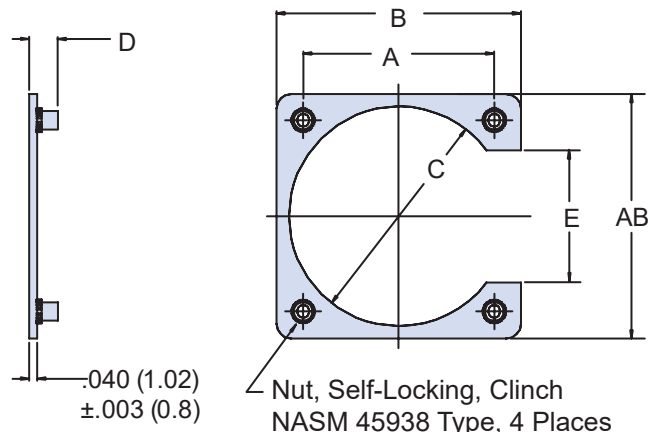


TABLE I: Reference for Connector Shell Size

Shell Size & Class	Thread UNJC-3B	A ±.005 (0.1)		B Max		C ±.015 (0.4)		D Max		E ±.030 (0.8)	
3A	4-40	.625	15.88	.940	23.88	.641	16.3	.166	4.22	.325	8.25
7A	4-40	.719	18.26	1.034	26.26	.688	17.5	.166	4.22	.433	11.00
8A	4-40	.594	15.09	.900	22.86	.570	14.5	.166	4.22	.308	7.82
10A	4-40	.719	18.26	1.034	26.26	.720	18.3	.166	4.22	.433	11.00
10B	6-32	.812	20.62	1.202	30.53	.749	19.0	.183	4.65	.433	11.00
12A	4-40	.812	20.62	1.119	28.42	.855	21.7	.166	4.22	.530	13.46
12B	6-32	.938	23.83	1.327	33.71	.938	23.8	.183	4.65	.530	13.46
14A	4-40	.906	23.01	1.213	30.81	.984	25.0	.166	4.22	.624	15.85
14B	6-32	1.031	26.19	1.421	36.09	1.031	26.2	.183	4.65	.624	15.85
16A	4-40	.969	24.61	1.295	32.89	1.094	27.8	.166	4.22	.687	17.45
16B	6-32	1.125	28.58	1.515	38.48	1.125	28.6	.183	4.65	.687	17.45
18A	4-40	1.062	26.97	1.421	36.09	1.220	31.0	.166	4.22	.780	19.81
18B	6-32	1.203	30.56	1.593	40.46	1.234	31.3	.183	4.65	.780	19.81
19A	4-40	.906	23.01	1.207	30.66	.953	24.2	.166	4.22	.620	15.75
20A	4-40	1.156	29.36	1.550	39.37	1.345	34.2	.166	4.22	.874	22.20
20B	6-32	1.297	32.94	1.703	43.26	1.359	34.5	.183	4.65	.865	21.97
22A	4-40	1.250	31.75	1.680	42.67	1.478	37.5	.166	4.22	.968	24.59
22B	6-32	1.375	34.92	1.753	44.53	1.483	37.7	.183	4.65	.907	23.04
24A	6-32	1.500	38.10	1.906	48.41	1.560	39.6	.183	4.65	1.000	25.40
24B	6-32	1.375	34.92	1.800	45.72	1.595	40.5	.183	4.65	1.031	26.19
25A	6-32	1.500	38.10	1.906	48.41	1.658	42.1	.183	4.65	1.125	28.58
27A	4-40	.969	24.61	1.270	32.26	1.094	27.8	.166	4.22	.683	17.35
28A	6-32	1.562	39.67	2.015	51.18	1.820	46.2	.183	4.65	1.125	28.58
32A	6-32	1.750	44.45	2.327	59.11	2.062	52.4	.183	4.65	1.188	30.18
36A	6-32	1.938	49.23	2.515	63.88	2.312	58.7	.183	4.65	1.375	34.92
37A	4-40	1.187	30.15	1.515	38.48	1.281	32.5	.166	4.22	.874	22.20
61A	4-40	1.437	36.50	1.827	46.41	1.594	40.5	.166	4.22	1.062	26.97

Dimensions in inches (millimeters) and are subject to change without notice.